

Product datasheet for **RG235303**

UTY (NM_001258249) Human Tagged ORF Clone

Product data:

Product Type:	Expression Plasmids
Product Name:	UTY (NM_001258249) Human Tagged ORF Clone
Tag:	TurboGFP
Symbol:	UTY
Synonyms:	KDM6AL; KDM6C; UTY1
Mammalian Cell Selection:	Neomycin
Vector:	pCMV6-AC-GFP (PS100010)
E. coli Selection:	Ampicillin (100 ug/mL)
ORF Nucleotide Sequence:	>RG235303 representing NM_001258249 Red=Cloning site Blue=ORF Green=Tags(s)

TTTTGTAATACGACTCACTATAGGGCGCCGGGAATTCGTCGACTGGATCCGGTACCGAGGAGATCTGCC
GCC**CGATCGCC**

ATGAAATCCTGCGCAGTGTGCTCACTACCGCCGCTGTTGCCTTCGGTGATGAGGCAAAGAAAATGGCGG
AAGGAAAAGCGAGCCGCGAGAGTGAAGAGGAGTCTGTTAGCCTGACAGTCGAGGAAAGGGAGGCGCTTGG
TGGCATGGACAGCCGCTCTTCGGGTTGCTGAGGCTTCATGAAGATGGCGCCAGAACGAAGACCCTACTA
GGCAAGGCTGTTGCTGCTACGAATCTTAATCTTAAAAGCTGAAGGAAAAGTGGAGTCTGACTTCTTTT
GCCAATTAGGTCACCTTCAACCTTGTGGGAAGATTATCAAAGCATTATCTGCATATCAGAGATTA
CAGTTTACAGGCTGACTACTGGAAGAATGCTGCGTTTTATATGGCCTTGGTTTGGTCTACTTCTACTAC
AATGCATTTTCATTGGGAATTAAGCATTCAAGATGTCCTTTATGTTGACCCAGCTTTTGTGCGAGCCA
AGGAAATTCATTTACGACTTGGGCTCATGTTCAAAGTGAACACAGACTACAAGTCTAGTTTAAAGCATT
TCAGTTAGCCTTGATTGACTGTAATCCATGTACTTTGTCCAATGCTGAAATTCATTTTCATATTGCCAT
TTGTATGAAACCCAGAGGAAGTATCATTCTGCAAAGGAGGCATATGAACAACCTTTGCGAGACAGAAAACC
TTCCTGCACAAGTAAAAGCAACTGTATTGCAACAGTTAGGTTGGATGCATCATAATAGGATCTAGTAGG
AGACAAAGCCACAAAGGAAAGCTATGCTATTCAGTATCTCCAAAAGTCTTTGGAGGCAGATCCTAATTCT
GGCCAATCGTGGTATTTTCTTGGAAAGTGTATTCAAGTATTGGGAAAGTTCAGGATGCCTTTATATCTT
ACAGGCAATCTATTGATAAATCAGAAGCAAGTGCAGATACATGGTGTCAATAGGTGTGTTGTATCAGCA
GCAAAATCAGCCTATGGATGCTTTACAGGCATATATTTGTGCTGTACAATTGGACCATGGGCATGCCGCA
GCCTGGATGGACCTAGGTAATCTCTATGAATCCTGCAATCAACCTCAAGATGCCATTAATGCTACCTAA
ATGCAGCTAGAAGCAAACGTTGTAGTAATACCTCTACGCTTGTGCAAGAATTAATTTCTACAGGCTCA
GTTGTGTAACCTTCCACAAAGTAGTCTACAGAATAAACTAAATTAATCTCCTAGTATTGAGGAGGCATGG
AGCCTACCAATCCCCGAGAGCTTACCTCCAGGCAGGGTGCCATGAACACAGCACAGCAGGCTTATAGAG
CTCATGATCAAATACTGAACATGTATTAACACAGTCAAACACCAATTTTACAGCAATCCTTGTCACT
ACACATGATTACTCTAGCCAAGTAGAAGGCCTGTCCAGTCTGCCAAGAAGAAAAGAACATCTAGTCCA



[View online »](#)

ACAAAGAATGGTTCTGATAACTGGAATGGTGGCCAGAGTCTTTCACATCATCCAGTACAGCAAGTTTATT
CGTTGTGTTTGACACCACAGAAATTACAGCACTTGAACAACCTGCGAGCAAAATAGAGATAATTTAAATCC
AGCACAGAAGCATCAGCTGGAACAGTTAGAAAAGTCAGTTTGTCTTAATGCAGCAAATGAGACACAAAGAA
GTTGCTCAGGTACGAACACTGGAATTCATAACGGGGCCATAACTGATTCATCACTGCCTACAAACTCTG
TCTCTAATCGACAACCACATGGTGTCTGACCAGAGTATCTAGCGTCTCTCAGCCTGGAGTTCGCCCTGC
TTGTGTTGAAAAACTTTTGTCCAGTGGAGCTTTTTCTGCAGGCTGTATTCCTTGTGGCACATCAAAAATT
CTAGGAAGTACAGACACTATCTTGCTAGGCAGTAATTGTATAGCAGGAAGTGAAGTAATGGAAATGTGC
CTTACCTGCAGCAAAAATACACACACTCTACCTCATAATCATAACAGACCTGAACAGCAGCACAGAAGAGCC
ATGGAGAAAAACAGCTATCTAACTCCGCTCAGGGGCTTCATAAAAAGTCAGAGTTTATGTTTGTGAGACCT
AATGAAGAACAACCTCTGTTTTCCACTGGGTGAGCCAGTATCACCAGGCAACTAGCACTGGTATTAAGA
AGGCGAATGAACATCTCACTCTGCCTAGTAATTCAGTACCACAGGGGGATGCTGACAGTCACTCTCCTG
TCATACTGCTACCTCAGGTGGACAACAAGGCATTATGTTTACCAAAGAGAGCAAGCCTTCAAAAAATAGA
TCCTTGGTGCCTGAAACAAGCAGGCATACTGGAGACACATCTAATGGCTGTGCTGATGTCAAGGGACTTT
CTAATCATGTTTCATCAGTTGATAGCAGATGCTGTTTCCAGTCTAACCATGGAGATTACCAAAATTTATT
AATTGCAGACAATCCTCAGCTCTGCTTTGTTGATTGAAAAGCCAATGGCAATGTGGGTACTGGAACC
TGTGACAAAAGTGAATAATATCCACCCAGCTGTTACATAAAGACTGATCATTCTGTTGCCTTCCACCT
CTTCAGCCATTTCCACAGCAACACCTTCTCCTAAATCCACTGAGCAGAGAAGCATAAACAGTGTACCAG
CCTTAACAGTCTCACAGTGGATTACACACAGTCAATGGAGAGGGGCTGGGGAAGTCACAGAGCTTACA
AAAGTAGACCTGCCTTTAGCTAGCCACAGATCTACTTCTCAGATCTTACCATCAATGTCAGTGTCTATAT
GCCCCAGTTCAACAGAAGTTCTGAAAGCATGCAGGAATCCAGGTA AAAATGGCTTGTCTAATAGCTGCAT
TTTGTAGATAAATGTCCACCTCCAAGACCACCAACTTACCATACCCACCCTTGCCAAAGGACAAGTTG
AATCCACCCACACCTAGTATTTACTTGGAAAATAAACGTGATGCTTTCTTCTCCATTACATCAATTTT
GTACAAATCCAAAAACCTGTTACAGTAATACGTGGCCTTGTGAGCTTAAATAGATCTTGGACT
TTTCTCTACCAAACTTTGGTAGAAGCTAACAATGAACATATGGTAGAAGTGAAGACACAGTTGCTGCAA
CCAGCAGATGAAAACCTGGGATCCCACTGGAACAAGAAAACTGGCGTTGTGAAAGCAATAGATCTCATA
CTACAATTGCCAAATACGCACAATACCAGGCTTCTCCTTCCAGGAATCATTGAGAGAAGAAAAATGAGAA
AAGAACACAACACAAAGATCATTAGATAACGAATCCACATCTTCCAGAGAATTCTGGAAGGAGAAGGAAA
GGACCTTTTAAAACCATAAAAATTTGGGACCAACATTGACCTCTCTGATAACAAAAAGTGAAGTTGCAGT
TACATGAAGTACTAACTTCTGCTTTTGGCGGTGGTGTGAGCAGGAAATCTTCAACCCATGTTGG
GCATACCATTCTGGGCATGAATACAGTACAAGTATATGAAAGTCCAGGGAGTCGGACACCAGGTCAC
CAAGAAAATAACAACCTTCTGCTCTGTTAACATAAATATGGTCCAGGAGATTGTGAATGGTTTGTGTAC
CTGAAGATTATTGGGGTGTCTGAATGACTTCTGTGAAAAAATAATTTGAATTTTTAATGAGTCTTG
GTGGCCCAACCTTGAAGATCTTTATGAAGCAAATGTCCCTGTGTATAGATTTATTCAGCGACCTGGAGAT
TTGGTCTGGATAAATGCAGGCACCTGTGCATTGGGTTCAAGCTGTTGGCTGGTGAATAACATTGCCTGGA
ATGTTGGTCCACTTACAGCCTGCCAGTATAAATGGCAGTGAACGGTATGAATGGAACAAATGAAAAAG
TGTGAAGTACCAGTACCCATGGTGCATCTTCTGGAATATGGCACGAAATATCAAAGTCTCAGATCCA
AAGCTTTTGAATGATTAAGTATTGCTTTTGAATAATCTGAAGCAATATCAGACATTGAGAGAAGCTC
TTGTTGCAGCAGGAAAAGAGTTATATGGCATGGGCGGACAAATGATGAACCAGCTCATTACTGTAGCAT
TTGTGAGGTGGAGGTTTTAATCTGCTTTTGTCACTAATGAAAGCAATACTCAAAAAACCTACATAGTA
CATTGCCATGATTGTGCACGAAAAACAAGCAAAAGTTTGGAAAAATTTTGGGTGCTCGAACAGTACAAAA
TGGAGGACCTAATCCAAGTTTATGATCAATTTACTAGCTCTTTTATTATCATCCTCATCT

ACGCGTACGCGGCCGCTCGAG - GFP Tag - GTTTAA

Protein Sequence: >RG235303 representing NM_001258249
Red=Cloning site Green=Tags(s)

MKSCAVSLTTAAVAFGDEAKKMAEGKASRESEEEVS L TVEEREALGGMSR LFGFVRLHEDGARTKLL
GKAVRCYESLILKAEKVESDFFCQLGHFNLLLEDYSKAL SAYQRYYS LQADYWKNA AFL YGLGL VYFY
NAFHWA I KAFQD VLYVDP SFCRAKE IHLRLGLMFKVNTDYKSS LKH FQLALIDCNPCTLSNAEIQFHIAH
L YETQRKYHSAKEAYEQLLQ TENLPAQVKATVLQQLGWMHHNMDLVGDKATKESYAIQYLQKSL EADPNS
GQSWYF LGRCYSSIGKVQDAFISYRQSIDKSEASADTWCSIGVL YQQNQPM DALQAYICAVQLDHGHAA
AWMDLGLTYESCNPQDAIKCYLNAARSKRCSNTSTLAARIKFLQAQLCNLPQSSLQNKTKLLPSIEEAW
SLPIPAELTSRQGAMNTAQQAYRAHDPNTEHVLNHSQTPILQQSLSLHMITSSQVEGLSSPAKKRTSSP
TKNGSDNWNNGGQSL SHHPVQQVYSLCLTPQKLQHLEQLRANRDNLNPAQKHQLEQLESQFVLMQQRHKE
VAQVRTTGIHNCAITDSSLPTNSVSNRQPHGALTRVSSVSQPGVRPACVEKLLSSGAFSAGCIPC GTSKI
LGSTDTILLGSNCIAGSESNGNVPY LQNTHTLPHNHTDLNSSTE E PWKQLSNSAQGLHKSSQSSCLSGP
NEEQPLFSTGSAQYHQATSTGIKKANEHLTLPNSV PQGDADSHLSCHTATSGGQQGIMFTKESKPSKNR
SLVPETSRHTGDT SNGCADVKGLSNHVHQLIADAVSSPNHGDSPNLLIADNPQLSALLIGKANGVGTGT
CDKVNNIHPAVHTKT DHSVASSPSSAISTATSPSKSTEQR SINSV TSLNSPHSGLHTVNGEGLGKSQSS
KVLDPLASHRSTSQILPSMSVSI C PSSTEV LKACRNPGKNGLSNSCILLDKCPPRPPTSPYPLPKDKL
NPPTPSIYLENKRDAFFPPLHQFCTNPKNPVT VIRGLAGALKL DLGLFSTKTLVEANNEHMVEVRTQLLQ
PADENWDPTGTTKIWRCE SNRSHTTIAKYAQYQASSFQESLREENEKRTQHKDHSNDESTSENSGRRRK
GPFKTIKFGTNIIDLSDNKKWKLQLHE LTKLPAFARVVSAGNLLTHVGH TILGMNTVQLYMKVPGSRTPGH
QENNNFCSVNINIGPGDCEW FVVPEDYWGVLNDFCEKNNL NFMSSWPNLEDL YEANVPVYRFIQRP GD
L VWINAGTVHWVQAVGW C NNIAWN VGPLTACQYKLAVERYEWNKLSVKSPVPMVHL SWNMARNIKVSDP
KLFEMIKYCLLKILKQYQTLREALVAAGKEVIWHGRTNDEPAHYCSI CEVEVFNLLFVTNESNTQKTYIV
HCHDCARKT SKSLENFV VLEQYKMEDLIQVYDQFTLALSLSSSS

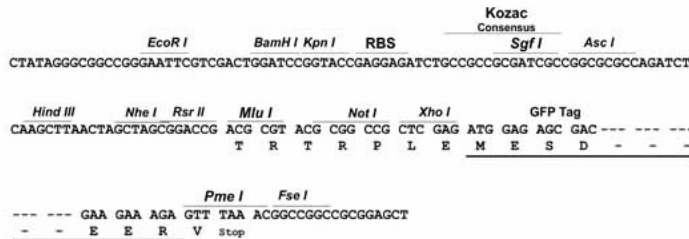
TRTRPLE - GFP Tag - V

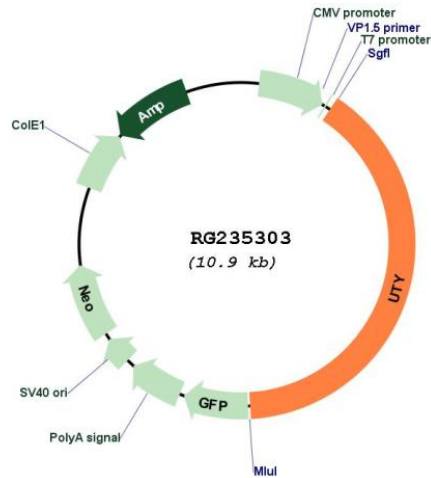
Restriction Sites:

Sgfl-MluI

Cloning Scheme:

Cloning sites used for ORF Shutting:



Plasmid Map:


ACCN: NM_001258249

ORF Size: 4332 bp

OTI Disclaimer: The molecular sequence of this clone aligns with the gene accession number as a point of reference only. However, individual transcript sequences of the same gene can differ through naturally occurring variations (e.g. polymorphisms), each with its own valid existence. This clone is substantially in agreement with the reference, but a complete review of all prevailing variants is recommended prior to use. [More info](#)

OTI Annotation: This clone was engineered to express the complete ORF with an expression tag. Expression varies depending on the nature of the gene.

Components: The ORF clone is ion-exchange column purified and shipped in a 2D barcoded Matrix tube containing 10ug of transfection-ready, dried plasmid DNA (reconstitute with 100 ul of water).

Reconstitution Method:

1. Centrifuge at 5,000xg for 5min.
2. Carefully open the tube and add 100ul of sterile water to dissolve the DNA.
3. Close the tube and incubate for 10 minutes at room temperature.
4. Briefly vortex the tube and then do a quick spin (less than 5000xg) to concentrate the liquid at the bottom.
5. Store the suspended plasmid at -20°C. The DNA is stable for at least one year from date of shipping when stored at -20°C.

RefSeq: [NM_001258249.1](#), [NP_001245178.1](#)

RefSeq Size: 6817 bp

RefSeq ORF: 4335 bp

Locus ID: 7404

Cytogenetics: Yq11.221

Protein Families: Transmembrane

Gene Summary: This gene encodes a protein containing tetratricopeptide repeats which are thought to be involved in protein-protein interactions. The encoded protein is also a minor histocompatibility antigen which may induce graft rejection of male stem cell grafts. A large number of alternatively spliced transcripts have been observed for this gene, but the full length nature of some of these variants has not been determined. [provided by RefSeq, Apr 2012]