

Product datasheet for **RG235299**

USP19 (NM_001199160) Human Tagged ORF Clone

Product data:

Product Type:	Expression Plasmids
Product Name:	USP19 (NM_001199160) Human Tagged ORF Clone
Tag:	TurboGFP
Symbol:	USP19
Synonyms:	ZMYND9
Mammalian Cell Selection:	Neomycin
Vector:	pCMV6-AC-GFP (PS100010)
E. coli Selection:	Ampicillin (100 ug/mL)
ORF Nucleotide Sequence:	>RG235299 representing NM_001199160 Red=Cloning site Blue=ORF Green=Tags(s)

TTTTGTAATACGACTCACTATAGGGCGGCCGGAATTCGTCGACTGGATCCGGTACCGAGGAGATCTGCC
GCC**CGATCGCC**

ATGTCTGGCGGGCCAGTGCCACAGGCCAAGGAGAGGGCCCCAGGACTGGAGGACACCACTAGTAAGA
AGAAGCAGAAGGATCGAGCAAACCAGGAGAGCAAGGATGGAGATCCTAGGAAAGAGACAGGGTCTCGATA
TGTTGCCAGGCTGGTCTTGAACCTCTGGCCTCAGGTGATCCTTCTGCCTCAGCCTCCCATGCAGCTGGG
ATCACAGGCTCAGCCACCGTACCCGGCTGTTCTTTCCTTCATCGTCAGGGTCAAGATCCACTCCTCAAG
AGGAGCAGACAAAGAGGGAGCTTGTGAAGACCCTCATGATCTCTTGGCTACTCCACTCCAGAGTTGTT
GCTCGATTGGAGGCAGAGTGCAGAAGAGGTGATTGTCAAGCTTCGTGTGGGAGTAGGTCCCTGCAGCTG
GAGGATGTAGATGCTGCTTTCACAGATACAGACTGTGTGGTGGGTTTGCAGGTGGTGCAGAGTGGGGT
GTGCTTCTATGCTGAGATAAAAAGCTCTTGTGCTAAAGTGCAAACCCGCAAGGGCAGTCTCCTGCACCT
GACACTGCCAAAAAGGTGCCTATGCTCACGTGGCCCTCCTCCTGAAGAAACCTTAGGGACCCAGGAG
CTGGTGCCGGGGCTGCGGTGCCAGGAGAATGGGCAGGAAGTGTCTCCATTGCCCTGGAGCCAGGCCCTG
AGCCCCACCGGGCTAAGCAGGAGGCCGGAACCAAGCGGGCCAGGGCCGTGGTAGGTTAGGCGCAGG
GGCTGGCCCCGGGGCCAGGCAGGGCCAGCCCAAGAGGGCTGTGCATCTTGCAGAGGGCCAGAGGGG
GACGGTCCAGGGATGACCTGGACCCCGGGGTGATGCCCAACCTTCGTGGCTGACCCAGCCACCCAGG
TTGAGGCTGATGAACAGCTTTCATACCCGCTGAACCTCCAAACCTGCCTCCTGGGCTCAGAGGAGAA
TTTAGCCCTTTGGCAGGAGAGAAAGCAGTGCCTCCCGGAATGACCCAGTCTCTCCAGCATGGTCCGG
AGCAGAAACCTGGGAAAGATGACTGTGCCAAGGAGGAGATGGCAGTGGCAGCAGATGCTGCAACCTTGG
TGGATGAGCCGAGTCGATGGTGAACCTGGCGTTTGTCAAGATGACTCGTATGAGAAGGGCCCGGATTC
AGTGGTGGTGCACGTGTACGTGAAGGAGATCTGCAGGGACACCTCAAGAGTACTTTCCGTGAGCAGGAC
TTCAGCTCATCTCCAGACCAGGGATGGAACCTCCTGAGGCTGCACCCGGGCTGTGGGCCACACCA
CCTTCCGTTGGCAGGTGAAGCTCAGGAATCTGATTGAGCCAGAGCAGTGCACCTTCTGTTTACGGCTTC
TCGCATCGACATCTGCCTTCGTAAGAGGCAGAGTCAGCGCTGGGGGGCCTGGAGCCCCGGCTGCACGA



[View online »](#)

GTGGGTGGTGCAAAGGTTGCCGTGCCGACAGGTCCAACCCCTCTGGATTCAACCCACCAGGAGGTGCTC
CCCACCCCTGACAGGCCAGGAGGAGGCCCGGGCTGTGGAGAAGGATAAATCCAAGGCACGATCTGAGGA
CACAGGGCTAGACAGTGTGGCAACCCGCACACCCATGGAGCATGTAACCCCAAAGCCAGAGACACACCTG
GCCTCGCCCAAGCCTACATGCATGGTGCCTCCCATGCCCCACAGCCAGTTAGTGGAGACAGCGTGGAGG
AGGAGGAAGAGGAAGAGAAGAAGGTGTGTCTGCCAGGCTTCACTGGCCTTGTCAATTTAGGCAACACCTG
CTTCATGAACAGCGTCATTCAGTCTCTGTCCAACACTCGGGAACCTCCGGGACTTCTCCATGACCCGCTCC
TTTGAGGCTGAGATCAACTACAACAACACTAGGGACTGGTGGGCGTCTGCCATTGGCCTTTGCCGTGC
TGCTTCGGGCGCTGTGGAAGGGCACCCACCATGCCTTCCAGCCTTCCAAGTTGAAGGCCATTGTGGCGAG
TAAGGCCAGCCAGTTCACAGGCTATGCACAGCATGATGCCAGGAGTTCATGGCTTTCCTGCTGGATGGG
CTGCACAGGACCTGAATCGCATTGAGAACAGCCCTACACAGAGACCGTGGATTGAGTGGGCGGCCCG
ATGAGGTGGTAGCTGAGGAAGCATGGCAGCGGCACAAGATGAGGAATGACTCTTTCATCGTGGACCTATT
TCAGGGGAGTACAAGTCGAAGCTGGTGTGCCCTGTGTGTCCAAGGTCTCCATCACTTTTGACCCGTTT
CTTTATCTGCCGGTGCCTTGGCACAAAAGCAAAGGTTCTCCCTGTCTTTATTTGCCCAGAGCCCC
ACAGCAAGCCCATCAAGTTCCTGGTGAAGCTGAGCGTCAGCAAGGAGAAGTCCACTGCGAGCGAAGTATTGACTC
CCTCTCTCAGAGTGTTCATGTGAAGCCTGAGAAGTGCCTTGGCGGAGGTAATTAAGAATCGTTTTTCAT
CGTGTGTTCTACCTCCCACTCACTGGACACTGTGTCCCATCTGATACGCTCCTCTGCTTTGAGCTGC
TATCCTCAGAGTTGGCTAAGGAGCGGGTAGTGGTGTAGAGGTGCAACAGCGCCCCAGGTGCCAGCGT
CCCCATCTCCAAGTGTGCAGCCTGCCAGCGGAAGCAACAGTGGAGGATGAAAAGCTGAAGCGCTGTACC
CGGTGCTACCGTGTGGGCTACTGCAACAGCTCTGCCAGAAAACCCACTGGCCTGACCACAAGGGCCTCT
GCCGACCTGAGAACATTGGTACCCCTTCTGGTCAAGTGTACCTGCTCACGCTCACTTATGCCCGCT
CGCTCAGTTGCTAGAGGGCTATGCCCGTACTCTGTGAGTGTATCCAGCCACCCCTTTCAGCCAGGCCG
ATGGCCTTGAGTCTCAGAGCCCTGGCTGCACCACACTGCTCTCCACAGGTTCCCTGGAGGCTGGGACA
GCGAGAGAGACCCCATTCAGCCACTGAGCTCCAGCTGGTGAAGCCTATGGCTGAGGGGGACACAGGGCT
TCCCCGGGTGTGGCAGCCCTGACCGGGTCTGTGCCAGCAGCAGTGGAAATTTCTTCTGAGATGCTG
GCCAGTGGGCCATTGAGGTTGGCTCCTTGCAGCTGGCAGAGGGTGTCCCGACCCGAAGCTGCTGTGC
CTGGGTACCAGCATCCAAGTGAAGCTATGAATGCCACACACCCCAAGTCTTTCATCTATAAAATTGATTC
ATCCAACCGAGAGCAGCGGCTAGAGGACAAAGGAGACACCCCACTGGAGCTGGGTGACGACTGTAGCCTG
GCTCTCGTCTGGCGAACAATGAGCGCTTGAGGAGTTTGTGTTGGTAGCCTCCAAGGAGCTGGAATGTG
CTGAGGATCCAGGCTCTGCCGGTGAAGCTGCCCGGGCCGGCCACTTACCCTGGACCAGTGCCTCAACCT
CTTCACACGGCTGAGGTGCTGGCACCCGAGGAGGCTGGTACTGCCACAGTGCACACAGCACCCTGAG
GCCTCCAAGCAGCTGTTGCTATGGCGCTGCCAAATGTTCTCATCGTGCAGCTCAAGCGCTTCTCCTTTC
GTAGTTTTATCTGGCGTGACAAGATCAATGACTTGGTGGAGTTCCTGTTAGGAACCTGGACCTGAGCAA
GTTCTGCATTGGTCAGAAAGAGGAGCAGCTGCCAGCTACGATCTATATGCTGTCATCAACCACTATGGA
GGCATGATTGGTGGCCACTACACTGCCTGTGCACGCTGCCCAATGATCGTAGCAGTCAAGCAGTGAAG
TGGGCTGGCGCTTGTGATGACAGCAGTGAACCGTAGACGAGAGCCAGGTTGTGACGCGTTATGC
CTATGACTCTTCTACCGCCGGCGGAACCTCTCTGTGGAGAGGCCCCCAAGGACAGTGGTGGGCCC
CACCCAGACCTAGGCCCTGCAGCTGAGGCTGTGCCAGCCAGGCTTCCCGGATTTGGCAGGAGCTGGAGG
CTGAGGAGGAGCCGCTGAGGGTCTGGGCCCTGGTCCCTGGGGGCCCAAGACTGGTGGGCCC
CCTACCAGTGGCCCTACCACACAGATGAGGGCTGCCTCCGGTACTTTGCTGGGACCGTGGCGGCT
TTGGTGGCCCTCGTGCTAACGTGTTCTATCCTCTGGTATCCAGAGTCTGCTGGAGA

AGCGGACCGACGCGTACGCGGCCGCTCGAG - GFP Tag - GTTTAA

Protein Sequence: >RG235299 representing NM_001199160
 Red=Cloning site Green=Tags(s)

```

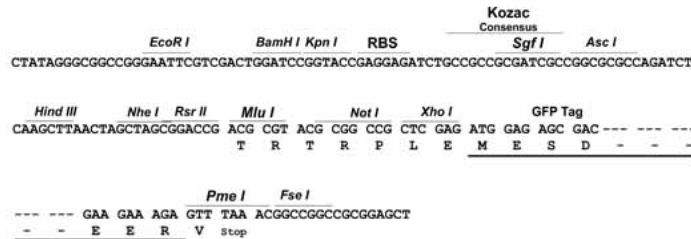
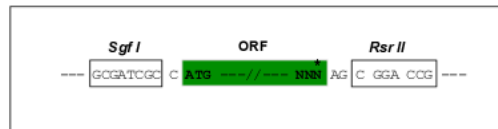
MSGGASATGPRRPPGLEDTTSKKKQKDRANQESKDGDPKRGTSRYVAQAGLEPLASGDPSASASHAAG
ITGSRHRTLFFPSSSGSASTPQEEQTKEGACEDPHDLLATPTPELLLDWRQSAEEVIVKLRVGVGPLQL
EDVDAAFDTDCVVRFAGGQWGGVFYAEIKSSCAKVVQTRKGSLLHLLTPKKVPMLTWPSLLKKPLGTQE
LVPGLRCQENGQELSPIALEPGPEPHRAKQEARNQKRAQGRGEVAGAGPGAQAGPSAKRAVHLCRGPEG
DGSRDDPGPRGDAPPFVADPATQVEADEQLCIPPLNSQTCLLGSEENLAPLAGEKAVPPGNDPVSPAMVR
SRNPGKDDCAKEEMAVAADAATLVDEPESMVNLAFVKNDSEYKGPDSVVVHVYVKEICRDTSRVLFREQD
FTLIFQTRDGNFLRLHPGCGPHTTFRWQVQLRNLEIEPEQCTFCFTASRIDICLRKRQSQRWGGLEAPAAR
VGGAKVAVPTGPTPLDSTPPGGAPHPLTGQEEARAVEKDKSKARSEDGLDSVATRTPMEHVTPKPETHL
ASPKPTCMVPPMPHSPVSGDSVEEEEEEEKVCLPGFTGLVNLGNTCFMNSVIQSLSNTRELRFDFHRS
FEAEINYNPLGTGGRLAIGFVLLRALWKGTHHAFQPSKLAIVASKASQFTGYAQHDAQEFMAFLLDG
LHEDLNRIQNKPYTETVSDGRPDEVVAEEAWQRHKMRNDSFIVDLFQGGYKSKLVCPVCAKVSITDFPF
LYLPVPLPQKQKVLVVFYAREPHSKPIKFLVSVSKENSTASEVLDSLQSVHVKPENLRLAEVIKRNRFH
RVFLPSHSLDTVSPSDTLLCFELLSSELAKEVVVLEVQQRQVPSVPI SKCAACQRKQSQSEDEKLRCT
RCYRVGYCNQLCQKTHWPDHKGCRPENIGYPFLVSVPASRLTYARLAQLLEGYARYSVSVFQPPFQPR
MALESQSPGCTLLSTGSLEAGDSERDPIQPPELQLVTPMAEGDTGLPRVWAAPDRGPVSTSGISSEML
ASGPIEVGSLPAGERVSRPEAAVPGYQHPSEAMNAHTPQFFIYKIDSSNREQRLEDKGDTPLELGDDCSL
ALVWRNNERLQEFVLVASKLECAEDPGSAGEAARAGHFTLDQCLNLFTRPEVLAPEEAWYCPQCKQHRE
ASKQLLLWRLPNVLI VQLKRF SFRSFIWRDKINDLVEFPVRNLDL SKFCIGQKEEQLP SYDLYAVINHYG
GMIGGHYTACARLPNDRSSQRSDVGVWRLFDDSTVTTVDESQVVTRYAYVLFYRRRNSPVERPPRAGHSEH
HPDLGPAAEAAAASQASRIWQLEAEEEEPVEGSGPLGPWGPQDWVGPLPRGPTTPDEGCLRYFVLGTVAAL
LVALVLNVFYPLVSQSRWR
    
```

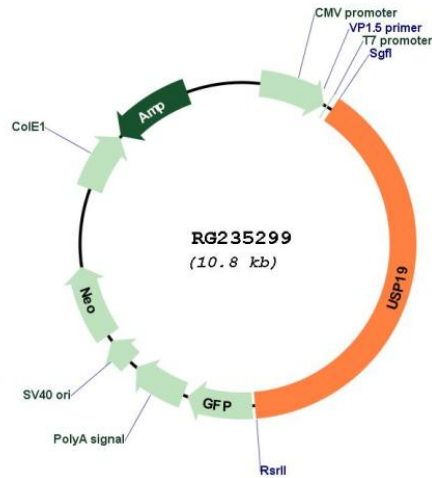
SGPTRRRLE - GFP Tag - V

Restriction Sites: SgfI-RsrII

Cloning Scheme:

Cloning sites used for ORF Shutting:



Plasmid Map:


ACCN:	NM_001199160
ORF Size:	4257 bp
OTI Disclaimer:	The molecular sequence of this clone aligns with the gene accession number as a point of reference only. However, individual transcript sequences of the same gene can differ through naturally occurring variations (e.g. polymorphisms), each with its own valid existence. This clone is substantially in agreement with the reference, but a complete review of all prevailing variants is recommended prior to use. More info
OTI Annotation:	This clone was engineered to express the complete ORF with an expression tag. Expression varies depending on the nature of the gene.
Components:	The ORF clone is ion-exchange column purified and shipped in a 2D barcoded Matrix tube containing 10ug of transfection-ready, dried plasmid DNA (reconstitute with 100 ul of water).

Reconstitution Method:	<ol style="list-style-type: none">1. Centrifuge at 5,000xg for 5min.2. Carefully open the tube and add 100ul of sterile water to dissolve the DNA.3. Close the tube and incubate for 10 minutes at room temperature.4. Briefly vortex the tube and then do a quick spin (less than 5000xg) to concentrate the liquid at the bottom.5. Store the suspended plasmid at -20°C. The DNA is stable for at least one year from date of shipping when stored at -20°C.
RefSeq:	NM_001199160.1 , NP_001186089.1
RefSeq Size:	4878 bp
RefSeq ORF:	4260 bp
Locus ID:	10869
UniProt ID:	O94966
Cytogenetics:	3p21.31
Protein Families:	Druggable Genome, Protease, Transmembrane
Gene Summary:	<p>Protein ubiquitination controls many intracellular processes, including cell cycle progression, transcriptional activation, and signal transduction. This dynamic process, involving ubiquitin conjugating enzymes and deubiquitinating enzymes, adds and removes ubiquitin. Deubiquitinating enzymes are cysteine proteases that specifically cleave ubiquitin from ubiquitin-conjugated protein substrates. This protein is a ubiquitin protein ligase and plays a role in muscle wasting. Alternatively spliced transcript variants encoding different isoforms have been found for this gene. [provided by RefSeq, May 2017]</p>