

Product datasheet for **RG235293**

UTY (NM_001258261) Human Tagged ORF Clone

Product data:

Product Type: Expression Plasmids
Product Name: UTY (NM_001258261) Human Tagged ORF Clone
Tag: TurboGFP
Symbol: UTY
Synonyms: KDM6AL; KDM6C; UTY1
Mammalian Cell Selection: Neomycin
Vector: pCMV6-AC-GFP (PS100010)
E. coli Selection: Ampicillin (100 ug/mL)
ORF Nucleotide Sequence: >RG235293 representing NM_001258261
Red=Cloning site Blue=ORF Green=Tags(s)

TTTTGTAATACGACTCACTATAGGGCGCCGGGAATTCGTCGACTGGATCCGGTACCGAGGAGATCTGCC
 GCCCGATCGCC

ATGAAATCCTGCGCAGTGTGCTCACTACCGCCGCTGTTGCCTTCGGTGATGAGGCAAAGAAAATGGCGG
 AAGGAAAAGCGAGCCGCGAGAGTGAAGAGGAGTCTGTTAGCCTGACAGTCGAGGAAAGGGAGCGCTTGG
 TGGCATGGACAGCCGCTCTTCGGGTTCTGAGGCTTCATGAAGATGGCGCCAGAACGAAGACCCTACTA
 GGCAAGGCTGTTGCTGCTACGAATCTTAATCTTAAAAGCTGAAGGAAAAGTGGAGTCTGACTTCTTTT
 GCCAATTAGGTCACCTTCAACCTTGTGGGAAGATTATCAAAGCATTATCTGCATATCAGAGATTA
 CAGTTTACAGGCTGACTACTGGAAGAATGCTGCGTTTTATATGGCCTTGGTTTGGTCTACTTCTACTAC
 AATGCATTTTCATTGGCAATTAAGCATTCAAGATGTCCTTTATGTTGACCCGAGCTTTTGTGCGAGCCA
 AGGAAATTCATTTACGACTTGGGCTCATGTTCAAAGTGAACACAGACTACAAGTCTAGTTTAAAGCATT
 TCAGTTAGCCTTGATTGACTGTAATCCATGTACTTTGTCCAATGCTGAAATTCATTTTCATATTGCCAT
 TTGTATGAAACCCAGAGGAAGTATCATTCTGCAAAGGAGGCATATGAACAACCTTTGCAGACAGAAAACC
 TTCCTGCACAAGTAAAAGCAACTGTATTGCAACAGTTAGGTTGGATGCATCATAATGGATCTAGTAGG
 AGACAAAGCCACAAAGGAAAGCTATGCTATTCAGTATCTCCAAAAGTCTTTGGAGGCAGATCCTAATTCT
 GGCCAATCGTGGTATTTTCTTGGAAAGTGTGTTGTATCAGCAGCAAAATCAGCCTATGGATGCTTTACAGG
 CATATATTTGTGCTGTACAATTGGACCATGGGCATGCCGAGCCTGGATGGACCTAGGTACTCTCTATGA
 ATCCTGCAATCAACCTCAAGATGCCATTAATGCTACCTAAATGCAGCTAGAAGCAAACGTTGTAGTAAT
 ACCTCTACGCTTGCTGCAAGAATTAATTTCTACAGGCTCAGTTGTGTAACCTTCCACAAAGTAGTCTAC
 AGAATAAACTAAATTACTTCTAGTATTGAGGAGGCATGGAGCCTACCAATCCCCGAGAGCTTACCTC
 CAGGCAGGTTGCCATGAACACAGCACAGCAGCAATCCTTGTCACTACACATGATTACTTCTAGCCAAGTA
 GAAGGCCTGTCCAGTCTGCCAAGAAGAAAAGAACATCTAGTCCAACAAGAATGGTTCTGATAACTGGA
 ATGGTGGCCAGATCTTTCACATCATCCAGTACAGCAAGTTTATTCGTTGTGTTGACACCACAGAAATT
 ACAGCACTTGAACAACCTGCGAGCAATAGAGATAATTTAAATCCAGCACAGAAGCATCAGCTGGAACAG



[View online »](#)

TTAGAAAGTCAGTTTGTCTTAATGCAGCAAATGAGACACAAAGAAGTTGCTCAGGTACGAACTACTGGAA
TTCATAACGGGGCCATAACTGATTCATCACTGCCTACAACTCTGTCTAATCGACAACCACATGGTGC
TCTGACCAGAGTATCTAGCGTCTCTCAGCCTGGAGTTCGCCCTGCTTGTGTTGAAAACTTTTGTCCAGT
GGAGCTTTTTCTGCAGGCTGTATTCCTTGTGGCACATCAAAAATCTAGGAAGTACAGACACTATCTTGC
TAGGCAGTAATTGTATAGCAGGAAGTAAAAGTAATGGAATGTGCCTTACCTGCAGCAAAATACACACAC
TCTACCTCATAATCATAACAGACCTGAACAGCAGCACAGAAGAGCCATGGAGAAAAACAGCTATCTAACTCC
GCTCAGGGGCTTCATAAAAAGTCAGAGTTCATGTTTGTGTCAGGACCTAATGAAGAACAACCTCTGTTTTCCA
CTGGGTCAGCCCAGTATACCAGGCAACTAGCACTGGTATTAAGAAGGCGAATGAACATCTCACTCTGCC
TAGTAATTCAGTACCACAGGGGGATGCTGACAGTCACCTCTCCTGTCATACTGCTACCTCAGGTGGACAA
CAAGGCATTATGTTTACCAAAGAGAGCAAGCCTTCAAAAATAGATCCTTGGTGCCTGAAACAAGCAGGC
ATACTGGAGACACATCTAATGGCTGTGCTGATGTCAAGGGACTTTCTAATCATGTTTCATCAGTTGATAGC
AGATGCTGTTTCCAGTCTAACCATGGAGATTCACCAAATTTATTAATTGCAGACAATCCTCAGCTCTCT
GCTTTGTTGATTGAAAAGCCAATGGCAATGTGGGTACTGGAACCTGTGACAAAGTAATAATTCACC
CAGCTGTTCATAAAAGACTGATCATTCTGTTGCCTCTTACCCTCTTCCAGCCATTTCCACAGCAACACC
TTCTCCTAAATCCACTGAGCAGAGAAGCATAAACAGTGTACCAGCCTTAAACAGTCTCACAGTGGATTA
CACACAGTCAATGGAGAGGGGCTGGGGAAGTCACAGAGCTCTACAAAAGTAGACCTGCCTTTAGCTAGCC
ACAGATCTACTTCTCAGATCTTACCATCAATGTCAAGTGTCTATATGCCCCAGTTCAACAGAAGTTCTGAA
AGCATGCAGGAATCCAGGTAAAAATGGCTTGTCTAATAGCTGCATTTTGTAGATAAAATGTCCACCTCCA
AGACCACCAACTTACCATAACCCACCCTTGCCAAAGGACAAGTTGAATCCACCCACACCTAGTATTTACT
TGGAAAATAAACGTGATGCTTTCTTCCCTCATTACATCAATTTTGTACAAAATCCAAAAACCTGTTAC
AGTAATACGTGGCCTTGTGGAGCTCTTAAATTAGATCTTGGACTTTTCTCTACAAAATTTTGGTAGAA
GCTAACAAATGAACATATGGTAGAAGTGAAGACACAGTTGCTGCAACCAGCAGATGAAAATGGGATCCCA
CTGGAACAAAGAAAATCTGGCGTTGTGAAAGCAATAGATCTCATACTACAATTGCCAAATACGCACAATA
CCAGGCTTCTCCTTCCAGGAATCATTGAGAGAAGAAAATGAGAAAAGAACAACAACAAGATCATTCA
GATAACGAATCCACATCTTCCAGAGAATTCTGGAAGGAGAAGGAAAGGACCTTTTAAAACATAAAATTTG
GGACCAACATTGACCTCTCTGATAACAAAAAGTGAAGTTGCAGTTACATGAACTGACTAAACTTCTCTGC
TTTTGCGCGTGTGGTGTGAGCAGGAAATCTTCTAACCCATGTTGGGCATACCATTCTGGGCATGAATACA
GTACAACGTATATGAAAGTCCAGGGAGTCGGACACCAGGTACCAAGAAAATAACAACCTTCTGCTCTG
TTAACATAAATATTGGTCCAGGAGATTGTGAATGGTTTGTGTACCTGAAGATTATTGGGGTGTCTGAA
TGACTTCTGTGAAAAAATAATTTGAATTTTTAATGAGTCTTGGTGGCCCAACCTTGAAGATCTTTAT
GAAGCAAATGTCCCTGTGTATAGATTTATTCAGCGACCTGGAGATTTGGTCTGGATAAATGCAGGCACTG
TGCAATGGGTTCAAGCTGTTGGCTGGTGAATAACATTGCCTGGAATGTTGGTCCACTTACAGCCTGCCA
GTATAAATTGGCAGTGGAACGGTATGAATGGAACAAATGAAAAGTGTGAAGTACCAGTACCCATGGTG
CATCTTCTGGAATATGGCACGAAATATCAAAGTCTCAGATCCAAGCTTTTTGAAATGATTAAGTATT
GTCTTTTGAAAATTTCTGAAGCAATATCAGACATTGAGAGAAGCTCTTGTGTCAGCAGGAAAAGAGGTTAT
ATGGCATGGGCGGACAAATGATGAACCAGCTCATTACTGTAGCATTGTGAGGTGGAGGTTTTAATCTG
CTTTTTGCTACTAATGAAAGCAACTCAAAAAACCTACATAGTACATTGCCATGATTGTGCACGAAAAA
CAAGCAAAAGTTTGGAAAATTTGTGGTCTCGAACAGTACAAAATGGAGGACCTAATCCAAGTTTATGA
TCAATTTACACTAGCTCTTTCATTATCATCCTCATCT

ACGCGTACGCGGCCGCTCGAG - GFP Tag - GTTTAA

Protein Sequence: >RG235293 representing NM_001258261
 Red=Cloning site Green=Tags(s)

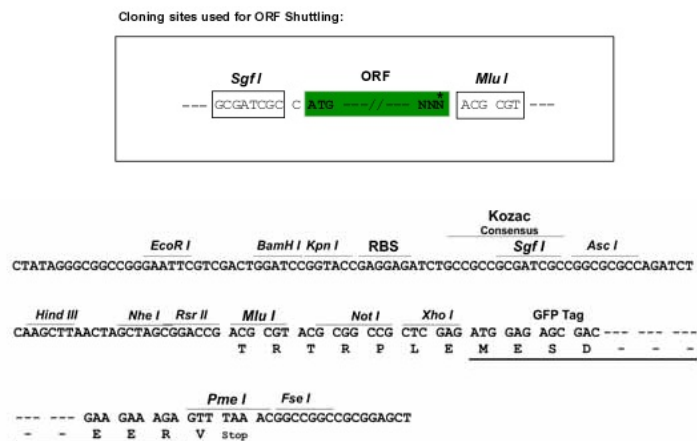
MKSCAVSLTTAAVAFGDEAKKMAEGKASRESEEEVSSTVEEREALGGMDSRLFGFVRLHEDGARTKLL
 GKAVRCYESLILKAEGKVESDFCQLGHFNLLLEDYSKALSAYQRYYSLQADYWKNAFLYGLGLVYFY
 NAFHWAIKAFQDVLVYDPSFCRAKEIHLRLGLMFKVNTDYKSSLKHFQLALIDCNPCTLSNAEIQFHIAH
 LYETQRKYHSAKEAYEQLLQ TENLPAQVKATV LQQLGWMHHNMDLVGDKATKESYAIQYLQKSL EADPN
 SQSWYFLG SVLYQQNQPM DALQAYICAVQLDHGHAAAWMDLGTLYESCNPQDAIKCYLNAARSKRCSN
 TSTLAARIKFLQAQLCNLPQSSLQNKTKLLPSIEEAWSLPIPAELTSRQGMNTAQQQSLSLHMITSSQV
 EGLSSPAKKKRTSSPTKNGSDNWNGQSLSHHPVQQVYSLCLTPQKLQHLEQLRANRDNLNP AQKHLEQ
 LESQFVLMQMRHKEVAQVRTTGIHNGAITDSSLPTNSVSNRQPHGALTRVSSVSQGV RPACVEKLLSS
 GAFSAGCIPCSTKILGSDTILLG SNCIAGSE SNGNVPYLQNTHTLPHNHTDLNSSTEEPWRKQLSNS
 AQGLHKSQSSCLSGPNEEQPLFSTGSAQYHQATSTGIKKANEHLTPSNSVPQGDADSHLSCHTATSGGQ
 QGIMFTKESKPSKNRSLVPETSRHTGDT SNGCADVKGLSNHVHQLIADAVSPNHG DSPNLLIADNPQLS
 ALLIGKANGNVGTGTC DKVNNIHPAVHTKTDHSVASSPSSAISTATSPKSTEQRINSV TSLNSPHSGL
 HTVNGEGLGKSQSSTKV DPLASHRSTSQILPMSVSI CPSSTEVLKACRNPGKNGLSN SCILLDKCPPP
 RPPTSPYPPLPKDKLNPPTPSIYLENKRD AFFPPLHQFCTNPKNPVTVIRGLAGALKDLGLFSTKTLVE
 ANNEHMEVVRTQLLQPADENWDPTG TTKIWRCESNRSHTTIAKYAQYQASSFQESLREENEKRTQHKDHS
 DNESTSSENSRRRKGPFKTIKFGTNI DLSDNKWKQLQLHELTKLPAFARVVSAGNLLTHVGHITLGMNT
 VQLYMKVPGSRTPGHQENNFCSVNINIGPGDCEWFVVPEDYWGVLNDFCEKNNL NFLMSSWWPNLEDLY
 EANVPVYRFIQRPGDLVWINAGTVHWVQAVGWCNNIAWNVGPTACQYKLAVERYEWNKLSVKSPVPMV
 HLSWNMARNIKVSDPKLFEMIKYCLL KILKQYQTLREALVAAGKEVIWHGRTNDEPAHYCSICEVEVFNL
 LFVTNESNTQKTYIVHCHDCARKT SKSLENFV VLEQYKMEDLIQVYDQFTLALSLSSSS

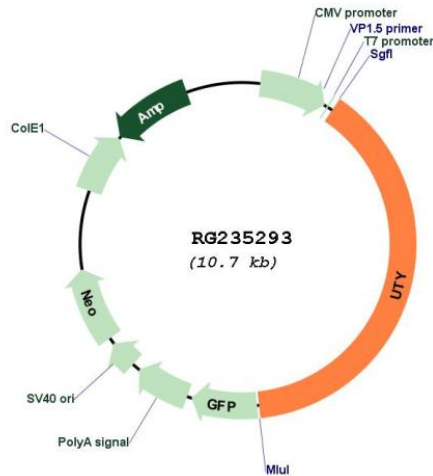
TRTRPLE - GFP Tag - V

Restriction Sites:

SgfI-MluI

Cloning Scheme:



Plasmid Map:


ACCN: NM_001258261

ORF Size: 4167 bp

OTI Disclaimer: The molecular sequence of this clone aligns with the gene accession number as a point of reference only. However, individual transcript sequences of the same gene can differ through naturally occurring variations (e.g. polymorphisms), each with its own valid existence. This clone is substantially in agreement with the reference, but a complete review of all prevailing variants is recommended prior to use. [More info](#)

OTI Annotation: This clone was engineered to express the complete ORF with an expression tag. Expression varies depending on the nature of the gene.

Components: The ORF clone is ion-exchange column purified and shipped in a 2D barcoded Matrix tube containing 10ug of transfection-ready, dried plasmid DNA (reconstitute with 100 ul of water).

Reconstitution Method:

1. Centrifuge at 5,000xg for 5min.
2. Carefully open the tube and add 100ul of sterile water to dissolve the DNA.
3. Close the tube and incubate for 10 minutes at room temperature.
4. Briefly vortex the tube and then do a quick spin (less than 5000xg) to concentrate the liquid at the bottom.
5. Store the suspended plasmid at -20°C. The DNA is stable for at least one year from date of shipping when stored at -20°C.

RefSeq: [NM_001258261.1](#), [NP_001245190.1](#)

RefSeq Size: 6652 bp

RefSeq ORF: 4170 bp

Locus ID: 7404

Cytogenetics: Yq11.221

Protein Families: Transmembrane

Gene Summary: This gene encodes a protein containing tetratricopeptide repeats which are thought to be involved in protein-protein interactions. The encoded protein is also a minor histocompatibility antigen which may induce graft rejection of male stem cell grafts. A large number of alternatively spliced transcripts have been observed for this gene, but the full length nature of some of these variants has not been determined. [provided by RefSeq, Apr 2012]