

Product datasheet for **RG235288**

ZMYM2 (NM_001190965) Human Tagged ORF Clone

Product data:

Product Type:	Expression Plasmids
Product Name:	ZMYM2 (NM_001190965) Human Tagged ORF Clone
Tag:	TurboGFP
Symbol:	ZMYM2
Synonyms:	FIM; MYM; RAMP; SCLL; ZNF198
Mammalian Cell Selection:	Neomycin
Vector:	pCMV6-AC-GFP (PS100010)
E. coli Selection:	Ampicillin (100 ug/mL)
ORF Nucleotide Sequence:	>RG235288 representing NM_001190965 Red=Cloning site Blue=ORF Green=Tags(s)

TTTTGTAATACGACTCACTATAGGGCGGCCGGAATTCGTCGACTGGATCCGGTACCGAGGAGATCTGCC
GCC**CGATCGCC**

ATGGACACAAGTTCAGTGGGAGGATTAGAATTGACTGATCAGACTCCTGTTTTATTAGGGAGTACGGCCA
TGGCAACTAGTCTCACGAATGTAGGAACTCATTTAGTGGTCCAGCTAATCCTTTAGTGTCTAGATCTAA
TAAGTTTCAGAACTCGTCAGTGAAGATGATGATGATGTTGTTTTATCGAACCTGTACAACCTCCCCCA
CCTTCTGTACCAGTGGTAGCTGATCAAAGAACCATAACATTTACATCATCAAAAAATGAAGAACTACAAG
GAAATGATTCCAAAATTACTCCTCCTCAAAGAGTTGGCATCTCAGAAGGGAAGTGAAGTGAGACAAT
TGTCAATTGATGATGAAGAGGACATGAAACAAATCAAGGCAAGAGAAAAATTCCTCCAATTTTATTGAA
CGAAGACCTCCTGAGACTAAAAACAGAACCAATGATGTGGATTTCTCCACTTCCAGTTTTCAAGAAGTA
AGGTAATGCAGGAATGGGTAATAGTGGTATCACCACAGAACCAGACTCTGAAATTCAGATTGCTAATGT
TACAACCTTAGAAACAGGTGTAAGCTCTGTGAATGATGGCCAATTAGAAAATACTGACGGGCGAGATATG
AACTTAATGATTACACATGTAACATCACTGCAGAATACCAACTGGGAGATGTCTTAACGGACTGCAGT
CAAGTAATTTGGTGTTAATATACAAACATACACCCCATCTTTAACTTCACAGACCAAGACTGGAGTAGG
ACCTTTTAACTCCTGGTGAATGAATGTGCAGGAGACGTTTTTTCAGAATGGAGAATCTGCAACTCATCAT
AATCCTGATTCTTGATCTCCAGTCAGCTTCATTTCCCGTAATCAGAAACAACCAGGGGTGGACTCTT
TATCACCAGTGGCCTCACTTCTAAACAGATTTCCAGCCGTCTGTCCAACAGCAGCCTACTAAACCAGT
TAAAGTCACTTGTGCAAACTGCAAAAAACCTTTACAGAAGGGCCAGACAGCTTATCAACGAAAAGGATCA
GCTCACCTCTTTGTTCTACCACCTGCCTTTCTTCTTCTCCACAAGCCTGCTCCTAAAGAACTCTGTG
TTATGTGTAAGAAAGATAAATACTACAATGAAAGGAACCATTTGTTGCTCAAGTGGATTCAAGTGAGTCCTT
CCAGGAATCTGTAGTACATCTGTTTATCTCTATGAAGACAAACAGAATCCTACTAAAGGAGCTCTA
AATAAATCAAGATGTACAATCTGTGTTAACTAACTGAGATTCGCCATGAAGTCAGCTTTAAAAATATGA
CTCATAAGCTGTGCAGTGACCACTGCTTTAATAGATATAGAATGGCCAATGGTTTAAATGAATTGCTG
TGAACAGTGTGGAGACTTGCCAGTAAAGGTGCTGAAATAATGTTCTGGTATTGATGGTCAACAG



[View online >](#)

AAAAGATTTTGTCTGTCAAAGTTGTGTCAAGTGAATACAAACAGGTAGGTAGCCATCCAAGCTTCTGAAGG
AGGTTTCGAGATCACATGCAGGACTCTTTCTTAATGCAGCCTGAGAAAATATGGAAAACGACAACCTGTAC
TGGTTGCCGAACACAGTGCAGGTTTTTGTATGACTCAGTGTATAGGTCCTAATGGATATATGGAGCCA
TATTGTTCAACTGCTTGTATGAACAGTCAACAAGACAAAATATGCAAAAACAAAAGTTGGGAATATTT
GCCATTTTGTAAAGCGAACTCTTACCTCAATACCAAGCCACAATGCCTGATGGAAAACGTACAACCT
TTGCAATTCAGTTGTGTGGCTAAATTTCAAGCTCTAAGTATGCAGTCATCTCCAATGGCCAGTTTGTGTA
GCGCCAAGTGAATTCAGTTGAAATGCAACTACTGCAAAAATTCCTTTTGTTCAAAACCCAGAAAACCTGG
AATGGGAGAACAAGTGCATCAGTTCTGCAGCAAAAACCTGTTTCAGATGACTATAAGAAAGTTGCATTGCAT
AGTTACATATTGCGAATACTGTCAAGAGGAGAAGACTCTTCATGAAACAGTAAATTTCTCTGGCGTTAAG
AGACCTTTCTGTAGTGAAGGCTGCAAAATTATTACAAACAGGATTTTGCAGACGTTTAGGATTGAGAT
GTGTTACTTGCAACTATTGTTCTCAGCTATGTAAGAAGGGAGCAACTAAAGAACCTCGATGGTGTGTGAG
AGATTTCTGCAGTGAAGATTGCTGTAAAAAATTCAGGATTGGTACTACAAGGCTGCAAGGTGTGACTGT
TGTAATCTCAAGGAACCTTAAAGAGCGAGTTCAGTGGCGTGGGAAAATGAAACATTTCTGTGATCAAC
ATTGCTTACTGCGTTTCTACTGTCAACAAAATGAGCCCAACATGACAACCTCAGAAAGGACCTGAAAACCT
ACATTATGATCAGGGTTGTGAGACATCTCGAACAAAATGACAGGTTTCAGCACCACCCCTTCTCCAACA
CCTAACAAAGAGATGAAGAACAAGCAGTTCTTTGCAAACTTTAAACAATGACAAAAGCTACTTACTGTA
AACCTCACATGCAGACCAAACTTGTGACAGAGATGATACTTGGAGGACAGAATATGTTCCAGTGCCTAT
CCCTGTGCCTGTGTATATCCCAGTTCTATGCACATGTACAGTCAGAATATTCCTGTTTCTACTACAGTT
CCTGTTCTGTGCCAGTTCTGTTTTTCTGCCTGCTCCATTGGACAGCAGTGAGAAGATTCTGCAGCAA
TTGAGGAGCTAAAAAGCAAGGTTTCTTCAGATGCTCTTGATACAGAGTTGCTTACAATGACGGATATGAT
GAGTGAAGACGAGGGGAAAACAGAGACAACCAACATCAACAGTGTAAATTTGAAACAGATATAATTGGT
TCAGACCTTTTGAAGAACTCTGACCCAGAGACACAGTCCAGCATGCCTGATGTACCATGAACCCAGATT
TGGATATCGAAATAGATTTTCCAGAGCTGCTGAGGAGCTTGTATGAAAAATGAATTTTTATTACCACC
TGTTTTTGGCGAAGAATATGAGGAACAGCCAGACCTCGATCTAAAAAAAAGGGAGCCAAGAGAAAAGGCT
GTATCAGGATACCAAGTCTCATGATGATAGTTCTGACAATTCAGAATGCAGCTTTCCTTTCAAAATACGT
ATGGCGTAAATGCATGGAACACTGGGTCAAACTAGGCAACTTGATGAAGATCTTCTGGTATTAGATGA
GTTAAAACTTCTAAATCAGTAAAGTAAAAGAGGATCTACTCTCTCACACCACAGCTGAGCTTAACTAT
GGGTTAGCTCATTTTGTCAATGAGATCCGACGGCCAAATGGAGAGAATTATGCACCTGACAGCATCTATT
ACCTTTGCCTTGAATACAGGAGTATTTGTGTGGAAGTAAATCGAAAAGACAACATATTTATTGATCCTGG
ATACCAAACATTTGAGCAAGAATTGAATAAAATACTGCGAAGCTGGCAACCAAGCATACTCCAGATGGG
TCAATATTCTCTCGAGTTGAAGAAGACTATCTCTGGAGGATAAAACAACCTAGGATCACACTCTCCAGTAG
CTTTCTGAATACACTGTTCTACTTTAACACTAAGTATTTTGGCCTGAAAACAGTGAACCAACACTTAAG
ACTTTCTTTGGCACTGTGTTTAGGCATTGGAAAAAATCCTTTAACGATGGAACCAAGCGTGTCTT
CGATACCAAGTGTCTTCTTGTGTGGAACAGATAATGAAGATAAAATTAATACTGAAAAAGAAAACATG
AAGATGATGAGCCAGTATTTGAACAAATGAAAACACAGCCAATCCTTCCAGATGTCCTGTGAAAATGTT
TGAATGCTACTTGTCTAAAAGTCCACAGAATCTTAATCAGAGGATGGATGTTTTTTATTTGCAACCAGAA
TGCTCTAGTTCTACAGATAGCCCTGTCTGGTATACGTCTACTTCACTGGACCGAAACACCTTGGAAAATA
TGCTTGTACGGGTTCTTCTAGTAAAAGATATTTATGATAAAGACAATTATGAACTGGATGAAGACACAGA
C

ACGCGTACGCGGCCGCTCGAG – GFP Tag – GTTTAA

Protein Sequence: >RG235288 representing NM_001190965
 Red=Cloning site Green=Tags(s)

```

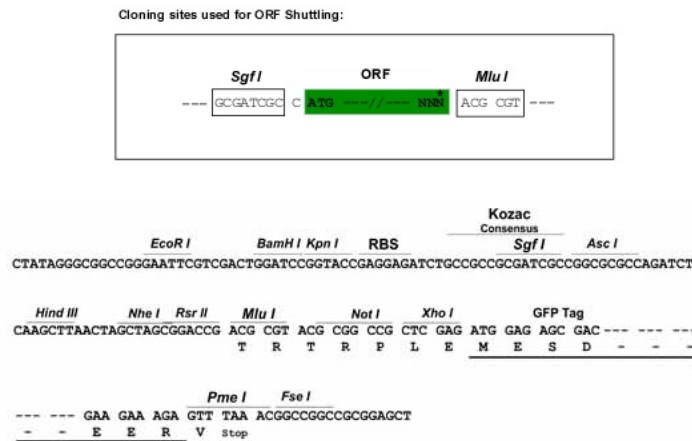
MDTSSVGGLELTDQTPVLLGSTAMATSLTNVGNFSFGPANPLVSRSNKFQNSSVEDDDDDVVFIEPVQPPP
PSVPVADQRTITFTSSKNEELQGNSKITPSSKELASQKGSVSETIVIDDEEDMETNQGEKNSNFIE
RRPPETKNRTNDVDFSTSSFSRSKVNAGMGNISGITTEPDSEIQIANVTTLETGVSSVNDGQLENTDGRDM
NLMITHVTSLQNTNLGDVSNGLQSSNFGVNIQTYTPSLTSQTKTGVGPFNPGRMNVAGDVFQNGESATHH
NPDSWISQSASFPRNQKQPGVDSLSPVASLPKQIFQPSVQQQPTKPKVVCANCKKPLQKQQTAYQRKGS
AHLFCSTTCLSSFHKPAPKCLVMCKKDITTMKGTIVAQVDSSESFQEFCSSTLSLYEDKQNPTKGAL
NKSRTCICGKLTEIRHEVSFKNMTHKLCSDHCFNRYRMANGLIMNCEQCGEYLPKSGAGNNVLVIDGQQ
KRFCCQSCVSEYKQVGSHPFLKEVRDHMQDSFLMQPEKYGKLTCTGCRTOCRFFDMTQCIQNGYMEP
YCSTACMNSHKTKYAKSQLGIIICHFCKRNSLPQYQATMPDGKLYNFCNSSCAKFAQALSMQSSPNGQFV
APSDIQLKCNCKNSFCCKPEILEWENKVVHQFCSKTCSDDYKHLHCIVTYCEYQEEKTLHETVNFSGVK
RPFCEGCKLLYKQDFARRLGLRCVTCNYCSQLCKKGATKELDGVVDRDFCEDCKKFFQDWWYKAARDC
CKSQGTLKERVQWRGEMKHFCDQHCLLRFYCQQNEPMTTQKGPENLHYDQGCQTSRTKMTGSAPPPSPT
PNKEMKNKAVLCKPLTMTKATYCKPHMQTKSCQTDWTREYVVPVPIPVVYIPVPMHMYSQNIPVPTTV
PVPVVPVFLPAPLDSSEKIPAAIEELKSKVSSDALDTELLTMDMSEDEGKTETTINSVIETDIIIG
SDLLKNSDPETQSSMPDVPYEPDLIDIEIDFPRAAEELDMENEFLLPPVFGEEYEEQPRRSKKGAKRKA
VSGYQSHDDSSDNSECSFPFKYTYGVNAWKHWKTRQLDEDLVLDLKSCKSVKLEKEDLLSHTTAEELNY
GLAHFVNEIRPGENYAPDSIYYLCLGIQEYLCGNSNRKDNIFIDPGYQTFEQLNKILRSWQPSILPDG
SIFSRVEEDYLWRIKQLGSHSPVALLNTLFYFNTKYFGLKTVQHLRLSFGTVFRHWKKNPLTMENKACL
RYQVSSLCGTDNEDKITTGKRKHEDDEPVFEQIENANPSRCPVKMFECYLSKSPQNLNQRMDVFLQPE
CSSSTDSPVWYTSLSLDRNTLENMLVRVLLVKDIYDKDNYELDEDTD
  
```

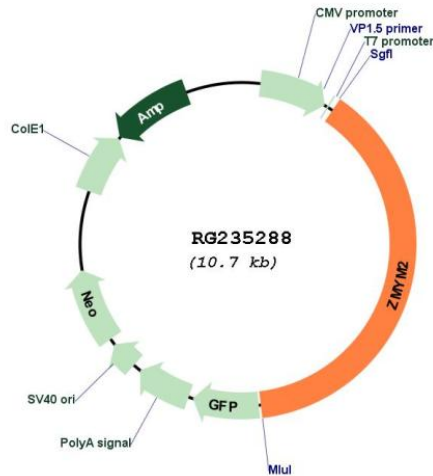
TRTRPLE - GFP Tag - V

Restriction Sites:

Sgfl-MluI

Cloning Scheme:



Plasmid Map:


ACCN: NM_001190965

ORF Size: 4131 bp

OTI Disclaimer: The molecular sequence of this clone aligns with the gene accession number as a point of reference only. However, individual transcript sequences of the same gene can differ through naturally occurring variations (e.g. polymorphisms), each with its own valid existence. This clone is substantially in agreement with the reference, but a complete review of all prevailing variants is recommended prior to use. [More info](#)

OTI Annotation: This clone was engineered to express the complete ORF with an expression tag. Expression varies depending on the nature of the gene.

Components: The ORF clone is ion-exchange column purified and shipped in a 2D barcoded Matrix tube containing 10ug of transfection-ready, dried plasmid DNA (reconstitute with 100 ul of water).

Reconstitution Method:

1. Centrifuge at 5,000xg for 5min.
2. Carefully open the tube and add 100ul of sterile water to dissolve the DNA.
3. Close the tube and incubate for 10 minutes at room temperature.
4. Briefly vortex the tube and then do a quick spin (less than 5000xg) to concentrate the liquid at the bottom.
5. Store the suspended plasmid at -20°C. The DNA is stable for at least one year from date of shipping when stored at -20°C.

RefSeq: [NM_001190965.4](#)

RefSeq Size: 10153 bp

RefSeq ORF: 4134 bp

Locus ID: 7750

UniProt ID: [Q9UBW7](#)

Cytogenetics: 13q12.11

Protein Families: Druggable Genome, ES Cell Differentiation/IPS, Transcription Factors

Gene Summary: The protein encoded by this gene is a zinc finger protein that may act as a transcription factor. The encoded protein may be part of a BHC histone deacetylase complex. Translocation of this gene with the fibroblast growth factor receptor-1 gene (FGFR1) results in a fusion gene, which may be a cause of stem cell leukemia lymphoma syndrome (SCLL). Several transcript variants encoding the same protein have been found for this gene. [provided by RefSeq, Jul 2010]