

## Product datasheet for **RG235270**

### UTY (NM\_001258256) Human Tagged ORF Clone

#### Product data:

Product Type:	Expression Plasmids
Product Name:	UTY (NM_001258256) Human Tagged ORF Clone
Tag:	TurboGFP
Symbol:	UTY
Synonyms:	KDM6AL; KDM6C; UTY1
Mammalian Cell Selection:	Neomycin
Vector:	pCMV6-AC-GFP (PS100010)
E. coli Selection:	Ampicillin (100 ug/mL)
ORF Nucleotide Sequence:	>RG235270 representing NM_001258256 Red=Cloning site Blue=ORF Green=Tags(s)

TTTTGTAATACGACTCACTATAGGGCGCCGGGAATTCGTCGACTGGATCCGGTACCGAGGAGATCTGCC  
GCC**CGATCGCC**

ATGAAATCCTGCGCAGTGTGCTCACTACCGCCGCTGTTGCCTTCGGTGATGAGGCAAAGAAAATGGCGG  
AAGGAAAAGCGAGCCGCGAGAGTGAAGAGGAGTCTGTTAGCCTGACAGTCGAGGAAAGGGAGCGCTTGG  
TGGCATGGACAGCCGCTCTTCGGGTTCTGAGGCTTCATGAAGATGGCGCCAGAACGAAGACCCTACTA  
GGCAAGGCTGTTGCTGCTACGAATCTTAATCTTAAAAGCTGAAGGAAAAGTGGAGTCTGACTTCTTTT  
GCCAATTAGGTCACCTTCAACCTTGTGTTGAAGATTATCAAAGCATTATCTGCATATCAGAGATTA  
CAGTTTACAGGCTGACTACTGGAAGAATGCTGCGTTTTATATGGCCTTGGTTTGGTCTACTTCTACTAC  
AATGCATTTTCATTGGCAATTAAGCATTCAAGATGTCCTTTATGTTGACCCAGCTTTTGTGCGAGCCA  
AGGAAATTCATTTACGACTTGGGCTCATGTTCAAAGTGAACACAGACTACAAGTCTAGTTTAAAGCATT  
TCAGTTAGCCTTGATTGACTGTAATCCATGTACTTTGTTCAATGCTGAAATTCATTTTCATATTGCCAT  
TTGTATGAAACCCAGAGGAAGTATCATTCTGCAAAGGAGGCATATGAACAACCTTTGCGAGACAGAAAACC  
TTCCTGCACAAGTAAAAGCAACTGTATTGCAACAGTTAGGTTGGATGCATCATAATAGGATCTAGTAGG  
AGACAAAGCCACAAAGGAAAGCTATGCTATTCAGTATCTCCAAAAGTCTTTGGAGGCAGATCCTAATTCT  
GGCCAATCGTGGTATTTTCTTGAAGGTGTTATTCAAGTATTGGGAAAGTTCAGGATGCCTTTATATCTT  
ACAGGCAATCTATTGATAAATCAGAAGCAAGTGCAGATACATGGTGTTCATAGGTGTGTTGTATCAGCA  
GCAAAATCAGCCTATGGATGCTTTACAGGCATATATTTGTGCTGTACAATTGGACCATGGGCATGCCGCA  
GCCTGGATGGACCTAGGTAATCTCTATGAATCCTGCAATCAACCTCAAGATGCCATTAATGCTACCTAA  
ATGCAGCTAGAAGCAAACGTTGTAGTAATACCTCTACGCTTGCTGCAAGAATTAATTTCTACAGGCTCA  
GTTGTGTAACCTTCCACAAAGTAGTCTACAGAATAAACTAAATTAATTTCTCCTAGTATTGAGGAGGCATGG  
AGCCTACCAATCCCCGAGAGCTTACCTCCAGGAGGGTCCATGAACACAGCACAGCAGAATGGTTCTG  
ATAACTGGAATGGTGGCCAGAGTCTTTCACATCATCCAGTACAGCAAGTTTATTCGTTGTGTTGACACC  
ACAGAAATTACAGCACTTGAACAACCTGCGAGCAATAGAGATAATTTAAATCCAGCACAGAAGCATCAG



[View online »](#)

CTGGAACAGTTAGAAAAGTCAGTTTGTCTTAATGCAGCAAATGAGACACAAAAGAAGTTGCTCAGGTACGAA  
CTACTGGAATTCATAACGGGGCCATAACTGATTCACTGCCTACAAACTCTGTCTCTAATCGACAACC  
ACATGGTGCTCTGACCAGAGTATCTAGCGTCTCTCAGCCTGGAGTTGCGCCTGCTTGTGTTGAAAAACTT  
TTGTCCAGTGGAGCTTTTTCTGCAGGCTGTATTCTTGTGGCACATCAAAAATCTAGGAAGTACAGACA  
CTATCTTGCTAGGCAGTAATTGTATAGCAGGAAGTAAAGTAAATGGAAATGTGCCTTACCTGCAGCAAAA  
TACACACACTCTACCTCATAATCATAACAGACCTGAACAGCAGCACAGAAGAGCCATGGAGAAAACAGCTA  
TCTAACTCCGCTCAGGGGCTTCATAAAAAGTCAGAGTTCATGTTTTGTGAGACCTAATGAAGAACAACCTC  
TGTTTTCCAAGTGGTCCAGCCAGTATCACCAGGCAACTAGCACTGGTATTAAGAAGGCGAATGAACATCT  
CACTCTGCCTAGTAATTAGTACCACAGGGGATGCTGACAGTCACCTCTCCTGTCATACTGCTACCTCA  
GGTGGACAACAAGGCATTATGTTTACCAAAGAGAGCAAGCCTTCAAAAAATAGATCCTTGGTGCCTGAAA  
CAAGCAGGCATACTGGAGACACATCTAATGGCTGTGCTGATGTCAAGGGACTTTCTAATCATGTTTCATCA  
GTTGATAGCAGATGCTGTTTCCAGTCTAACCATGGAGATTACCAAATTTATTAATTGCAGACAATCCT  
CAGCTCTGCTTTGTTGATTGGAAAAGCCAATGGCAATGTGGTACTGGAACCTGTGACAAAAGTGAATA  
ATATTCACCCAGCTGTTACATAAAAGACTGATCATTCTGTTCCTTCCACCTCTCAGCCATTTCCAC  
AGCAACACCTTCTCTAAATCCACTGAGCAGAGAAGCATAAACAGTGTACCAGCCTAACAGTCCCTCAC  
AGTGGATTACACACAGTCAATGGAGAGGGGCTGGGGAAGTCACAGAGCTTACAAAAGTAGACCTGCCTT  
TAGCTAGCCACAGATCTACTTCTCAGATCTTACCATCAATGTCAGTGTCTATATGCCCCAGTTCAACAGA  
AGTTCTGAAAGCATGCAGGAATCCAGGTAAAAATGGCTTGTCTAATAGCTGCATTTTGTAGATAAATGT  
CCACCTCCAAGACCACCAACTTACCATACCCACCCTTGCCAAAGGACAAGTTGAATCCACCCACACCTA  
GTATTTACTTGGAAAATAAACGTGATGCTTTCTTCTCCATTACATCAATTTGTACAAATCCAAAAA  
CCCTGTTACAGTAATACGTGGCCTTGTGGAGCTTAAATTAGATCTTGGACTTTTCTCTACAAAAACT  
TTGGTAGAAGCTAACAAATGAACATATGGTAGAAGTGAAGCAGTTCGCAACCAGCAGATGAAAACT  
GGGATCCCACTGGAACAAAGAAAATCTGGCGTTGTGAAAGCAATAGATCTCATACTACAATTGCCAAATA  
CGCACAATACCAGGCTTCTCCTTCCAGGAATCATTGAGAGAAGAAAATGAGAAAAGAACAACACAAAA  
GATCATTACAGATAACGAATCCACATCTTACAGAAATCTGGAAGGAGAAGGAAAAGGACCTTTTAAAAACA  
TAAAAATTTGGGACCAACATTGACCTCTCTGATAACAAAAAGTGAAGTTGCAGTTACATGAACTGACTAA  
ACTTCTGCTTTTGGCGGTGTGGTGTGAGCAGGAAATCTTCTAACCCTGTTGGGCATACCATTCTGGGC  
ATGAATACAGTACAACGTATATGAAAGTTCCAGGGAGTCGGACACCAGGTCACCAAGAAAATAACAAC  
TCTGCTCTGTTAACATAAATATGGTCCAGGAGATTGTGAATGGTTTGTGTACCTGAAGATTATTGGGG  
TGTTCTGAATGACTTCTGTGAAAAAATAATTTGAATTTTTAATGAGTCTTGGTGGCCCAACCTTGAA  
GATCTTTATGAAGCAAATGTCCCTGTGTATAGATTTTTCAGCGACCTGGAGATTTGGTCTGGATAAATG  
CAGGCACTGTGCATTGGGTTCAAGCTGTTGGCTGGTGAATAACATTGCCTGGAATGTTGGTCCACTTAC  
AGCCTGCCAGTATAAATGGCAGTGAACGGTATGAATGGAACAAATGAAAAGTGTGAAGTACCAGTA  
CCCATGGTGCATCTTCTGGAATATGGCACGAAATATCAAAGTCTCAGATCCAAAGCTTTTGAATGA  
TTAAGTATTGCTTTTGAATTTCTGAAGCAATATCAGACATTGAGAGAAGCTCTTGTGACAGCAGGAAA  
AGAGGTTATATGGCATGGGCGGACAAATGATGAACCAGCTCATTACTGTAGCATTTGTGAGGCTCTTCA  
TTATCATCCTCATCT

ACGCGTACGCGGCCGCTCGAG - GFP Tag - GTTTAA

Protein Sequence: >RG235270 representing NM\_001258256  
 Red=Cloning site Green=Tags(s)

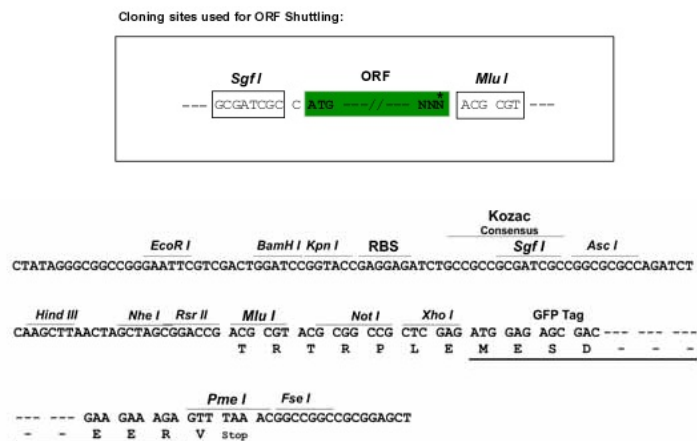
MKSCAVSLTTAAVAFGDEAKKMAEGKASRESEEEVSLSL TVEEREALGGMDSRLFGFVRLHEDGARTKLL  
 GKAVRCYESLILKAEKVESDFFCQLGHFNLLLEDYSKALSAYQRYYSLQADYWKNA AFLYGLGLVYFY  
 NAFHWAIAKAFQDVLVYDPSFCRAKEIHLRLGLMFKVNTDYKSSLKHFQLALIDCNPCTLSNAEIQFHIAH  
 LYETQRKYHSAKEAYEQLLQ TENLPAQVKATVLQQLGWMHHNMDLVGDKATKESYAIQYLQKSLEADPNS  
 GQSWYFLGRCYSSIGKVQDAFISYRQSIDKSEASADTWCSIGVL YQQNQPM DALQAYICAVQLDHGHAA  
 AWMDLGLTYESCNPQDAIKCYLNAARSKRCSNTSTLAARIKFLQAQLCNLPQSSLQNKTKLLPSIEEAW  
 SLP IPAELTSRQGAMNTAQQNGSDNWNNGGQSLSHHPVQQVYSLCLTPQKLQHLEQLRANRDNLNPAQKHQ  
 LEQLESQFVLMQMRHKEVAQVRTTGIHNGAITDSSLPTNSVSNRQPHGALTRVSSVSQPGVRPACVEKL  
 LSSGAFSAGCIPCGTSKILGSTDITLLGSNCIAGSE SNGNVPYLQNTHTLPHNHTDLNSSTEERPWRKQL  
 SNSAQGLHKSQS SCLSGPNEEQPLFSTGSAQYHQATSTGIKKANEHLTLPNSVSPQGDADSHLSCHTATS  
 GGQQGIMFTKESKPSKNRSLVPETSRHTGDT SNGCADVKGLSNHVHQLIADAVSSPNHGDS PNL IADNP  
 QLSALLIGKANGVGTGTCDKVNNIHPAVHTKTDHSVASSPSSAISTATPSPKSTEQRSINSVTSLSNSPH  
 SGLHTVNGEGLGKSQSSTKVDLPLASHRSTSQILPSMSVSI CPSSTEVLKACRNP GK NGLSN SCILLDKC  
 PPPRPPTSPYPPLPKDKLN PPTPSIYLENKRDAFFPPLHQFCTNPKNPVTVIRGLAGALKLDLGLFSTKT  
 LVEANNEHMEVVRTQLLPADENWDPTGTKKIWRCESNRSHTTIAKYAQYQASSFQESLREENEKRTQHK  
 DHSNDESTSSENSGRRRKGPFKTIKFGTNIDLSDNKKWKLQLHELTKLP AFARVVSAGNLLTHVGHITLG  
 MNTVQLYMKVPGSRTPGHQENNFCSVNIINIGPGDCEWFVVPEDYWGVLNDFCEKNLNLFLMSSWWPNLE  
 DLYEANVPVYRFIQRPGDLVWINAGTVHWVQAVGWCNNIAWNVGPLTACQYKLAVERYEWNKLSVKSPV  
 PMVHLSWNMARNIKVSDPKLFEMIKYCLLKILKQYQTLREALVAAGKEVIWHGRTNDEPAHYCSICEALS  
 LSSSS

TRTRPLE - GFP Tag - V

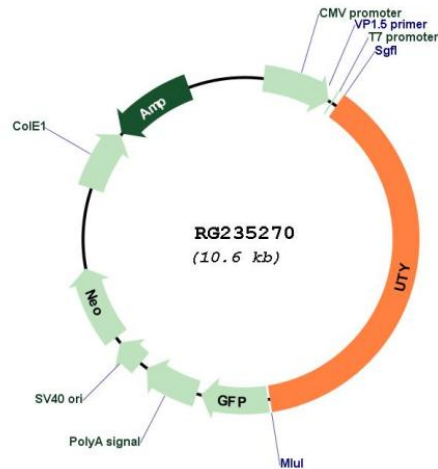
Restriction Sites:

Sgfl-MluI

Cloning Scheme:



## Plasmid Map:



ACCN: NM\_001258256

ORF Size: 4005 bp

OTI Disclaimer: The molecular sequence of this clone aligns with the gene accession number as a point of reference only. However, individual transcript sequences of the same gene can differ through naturally occurring variations (e.g. polymorphisms), each with its own valid existence. This clone is substantially in agreement with the reference, but a complete review of all prevailing variants is recommended prior to use. [More info](#)

OTI Annotation: This clone was engineered to express the complete ORF with an expression tag. Expression varies depending on the nature of the gene.

Components: The ORF clone is ion-exchange column purified and shipped in a 2D barcoded Matrix tube containing 10ug of transfection-ready, dried plasmid DNA (reconstitute with 100 ul of water).

Reconstitution Method:

1. Centrifuge at 5,000xg for 5min.
2. Carefully open the tube and add 100ul of sterile water to dissolve the DNA.
3. Close the tube and incubate for 10 minutes at room temperature.
4. Briefly vortex the tube and then do a quick spin (less than 5000xg) to concentrate the liquid at the bottom.
5. Store the suspended plasmid at -20°C. The DNA is stable for at least one year from date of shipping when stored at -20°C.

RefSeq: [NM\\_001258256.1](#), [NP\\_001245185.1](#)

RefSeq Size: 6490 bp

RefSeq ORF: 4008 bp

Locus ID: 7404

Cytogenetics: Yq11.221

Protein Families: Transmembrane

**Gene Summary:**

This gene encodes a protein containing tetratricopeptide repeats which are thought to be involved in protein-protein interactions. The encoded protein is also a minor histocompatibility antigen which may induce graft rejection of male stem cell grafts. A large number of alternatively spliced transcripts have been observed for this gene, but the full length nature of some of these variants has not been determined. [provided by RefSeq, Apr 2012]