

Product datasheet for **RG235243**

Liprin alpha 2 (PPFIA2) (NM_001220476) Human Tagged ORF Clone

Product data:

Product Type:	Expression Plasmids
Product Name:	Liprin alpha 2 (PPFIA2) (NM_001220476) Human Tagged ORF Clone
Tag:	TurboGFP
Symbol:	PPFIA2
Mammalian Cell Selection:	Neomycin
Vector:	pCMV6-AC-GFP (PS100010)
E. coli Selection:	Ampicillin (100 ug/mL)
ORF Nucleotide Sequence:	>RG235243 representing NM_001220476 Red=Cloning site Blue=ORF Green=Tags(s)

TTTTGTAATACGACTCACTATAGGGCGGCCGGAATTCGTCGACTGGATCCGGTACCGAGGAGATCTGCC
GCC**CGATCGCC**

ATGATGTGTGAAGTGATGCCACGATTAATGAGGACACCCCAATGAGCCAAAGGGGTCCCAAAGCAGTG
GCTCGGACTCAGACTCCCATTTTGAGCAGCTGATGGTGAATATGCTAGATGAAAGGGATCGTCTTCTAGA
CACCTTCGGGAGACCCAGGAAAGCCTCTCACTTGCCAGCAAAGACTTCAGGATGTCATCTATGACCGA
GACTCACTCCAGAGACAGCTCAATTCAGCCCTGCCACAGGATATCGAATCCCTAACAGGGCTGGCTG
GTTCTAAGGGGCTGATCCACCGGAATTTGCTGCACTGACAAAAGAATTAATGCCTGCAGGGAACAAT
TCTAGAAAAGGAAGAAGAAATCTCTGAACTTAAAGCTGAAAGAAAACAACAAGACTATTACTGGAGCAT
TTGGAGTGCCTTGTCACGACATGAAAGATCACTAAGAATGACGGTGGTAAAACGGCAAGCCAGTCTC
CCTCAGGAGTATCCAGTGAAGTTGAAGTTCTCAAGGCACTGAAATCTTTGTTGAGCACCACAAGCCCTT
GGATGAAAAGGTAAGGGAGCGACTGAGGGTTTCTTTAGAAAGAGTCTCTGCACTGGAAGAAGAACTAGCT
GCTGCTAATCAGGAGATTGTTGCCTTGCCTGAACAAAATGTTTATACAAAGAAAAATGGCATCAAGCG
AGGGATCCACAGAGTCAGAACATCTTGAAGGGATGGAACCTGGACAGAAAGTCCATGAGAAGCGTTTGT
CAATGGTTCTATAGACTCAACCGATGAACTAGTCAAATAGTTGAACTACAAGAATTGCTTGAAGGCAA
AACTATGAAATGGCCAGATGAAAGAACGTTTAGCAGCCCTTTCTCCCGAGTGGGAGAGGTGGAACAGG
AAGCAGAGACAGCAAGAAAGGATCTCATTAAAACAGAAGAAATGAACACCAAGTATCAAAGGACATTAG
GGAGGCCATGGCACAAAAGGAAGATATGGAAGAAAGAATTACAACCCCTGAAAAGCGTTACCTCAGTGCT
CAGAGAGAATCTACCTCCATACATGACATGAATGATAAACTAGAAAATGAGTTAGCAAATAAAGAAGCTA
TCCTGCGGCAGATGGAAGAGAAAAACAGACAGTTACAAGAACGCTTTGAGCTAGCTGAACAAAAGTTGCA
GCAGACCATGAGAAAGGCTGAAACCTTGCTGAAGTAGAGGCTGAACTGGCTCAGAGAATTGCAGCCCTA
ACCAAGGCTGAAGAGAGACATGGAATATTGAAGAACGTATGAGACATTTAGAGGGTCAACTGAAGAGA
AGAATCAAGAACCTCAAAGAGCTAGGCAAAGAGAGAAAAATGAATGAGGAGCATAACAAGAGATTATCGGA
TACGGTTGATAGACTTCTGACTGAATCCAATGAACGCCTACAACACTAACCTTAAAGGAAAGAATGGCTGCT
CTAGAAGAAAAGAATGTTTTAATCAAGAATCAGAAACTTTAGAAAGAATCTTGAAGAATCTTTACATG
ATAAGGAAAGATTAGCAGAAGAAATTGAAAAGCTGAGATCTGAACTTGACCAATTGAAAATGAGAACTGG



[View online »](#)

CTCTTTAATTGAACCCACAATACCAAGAACTCATCTAGACACCTCAGCTGAGTTGCGGTA CTCACTGAGTGGGA
TCCCTAGTGGACAGCCAGTCTGATTACAGAACAACTAAAGTAATAAGAAGACCAAGGAGAGGCCGCATGG
GTGTGCGAAGAGATGAGCCAAAGGTGAAATCTCTTGGGGATCACGAGTGGAACTAGAACTCAACAGATTGG
AGTACTAAGCAGCCACCCCTTTTGAAGTGACACTGAAATGTCTGATATTGATGATGATGACAGAGAAACA
ATTTTTAGCTCAATGGATCTTCTCTCCAAGTGGTCATTCGGATGCCAGACGCTAGCCATGATGCTTC
AGGAACAATTGGATGCCATCAACAAAGAAATCAGGCTAATTCAGGAAGAAAAAGAACTACAGAGTTGCC
TGCTGAAGAAATTGAAAATAGAGTGGCTAGTGTGAGCCTCGAAGGCCTGAATTTGGCAAGGGTCCACCCA
GGTACCTCATTACTGCCCTGTGTTACAGCTTCATCGCTGGCCAGTTCATCTCCCCCAGTGGACACTCAA
CTCCAAAGCTCACCCCTCGAAGCCCTGCCAGGAAATGGATCGGATGGGAGTCATGACACTGCCAAGTGA
TCTGAGGAAACATCGGAGAAAGATTGCAGTTGTGGAAGAAGATGGTCGAGAGGACAAAGCAACAATAA
TGTGAACTTCTCCTCCTACCCCTAGAGCCCTCAGAATGACTCACACTCTCCCTTCTCCTACCACA
ATGATGCTCGAAGTAGTTTATCTGTCTCTTGGCCAGAAAGCCTCGGGCTTGGTAGTCCAACAGCAG
CCAAGACTCTTTCACAAAGCCCCAAGAAGAAAGGAATCAAGTCTTCAATAGGACGTTTGGTTGGTAA
AAAGAAAAGCTCGACTTGGGCAGCTCCGAGGCTTTATGGAGACTGAAGCTGCAGCTCAGGAGTCCCTGG
GGTTAGGCAAACCGAACTCAAGCTGAGAAGGATCGAAGACTAAAGAAAAGCATGAACCTCTTGAAGA
AGCTCGGAGAAAAGGGATTACCTTTGCCAGTGGGATGGGCAACTGTGGTCGCATGGCTAGAGCTTTGG
TTGGGAATGCCTGCGTGGTACGTGGCAGCCTGCCGAGCCAACGTGAAGAGTGGTGCCATCATGTCTGCTT
TATCTGACACTGAGATCCAGAGAGAAAATGGAATCAGCAATCCACTGCATCGCTTAAAACCTCGATTAGC
AATCCAGGAGATGGTTTCCCTAACAAAGTCTTCAGCTCCTCCAACATCTCGAACTCCTCAGGCAACGTT
TGGGTGACTCATGAAGAAATGAAAAATCTTGCAGCTCCAGCAAAAACGAAAGAATCTGAGGAAGGAAGCT
GGGCCAGACCCTGGCTTATGGAGATATGAATCATGAGTGGATTGGAAATGAATGGCTTCCCAGCTTGGG
GTTACCTCAGTACAGAAGTTACTTTATGGAATGCTTGGTAGATGCAAGAATGTTAGATCACCTAACAAAA
AAAGACTCCGTGTCCATTTAAAAATGGTGGATAGTTTCCATCGAACAAGTTTACAATATGGAATTTATGT
GCTTAAAGAGGTTGAATTATGACAGAAAAGAACTAGAAAAGAACGCGGAAGCAAGCCAACATGAAATAAA
AGACGTGTTGGTGTGGAGCAATGACCGAGTTATTCGCTGGATACAAGCAATTGGACTTCGAGAATATGCA
AATAATACTTGAGAGCGGTGTGCATGGCTCACTTATAGCCCTGGATGAAAACCTTGGACTACAGCAGCT
TAGCTTTATTATTACAGATTCCAACACAGAACCCAGGCAAGGCAGATTCTTGAAGAGAATAACAATA
CCTCTTGGCCCTGGAACTGAAAGGCGACTGGATGAAAGTATGACAAGAAGTTCAGACGTGGATCAACC
TGGAGAAGGCAGTTTCTCCTCGTGAAGTACATGGAATCAGCATGATGCCTGGTCTCAGAAACATTAC
CAGCTGGATTTAGGTTAACCAACCTCTGGGCAGTCAAGAAAAATGACAACAGATGTTGCTTCATCAAG
ACTGCAGAGGTTAGACAACCTCACTGTTGCGACATACTCATGT

ACGCGTACGCGGCCGCTCGAG - GFP Tag - GTTTAA

Protein Sequence: >RG235243 representing NM_001220476
 Red=Cloning site Green=Tags(s)

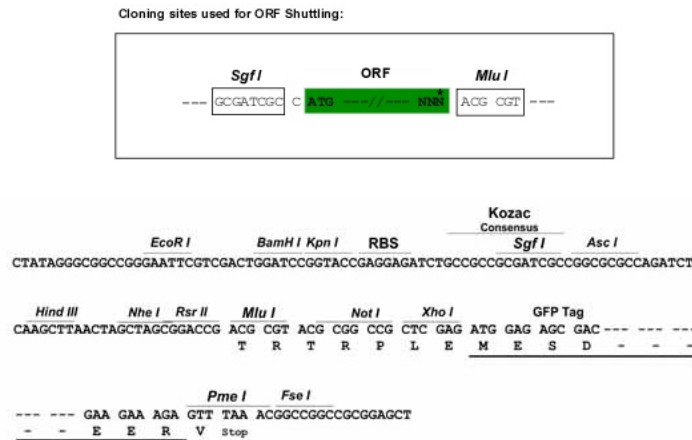
```

MMCEVMPTINEDTPMSQRGSQSSGSDSDSHFEQLMVNMLDERDRLLDTLRETQESLSLAQQRLQDVIYDR
DSLQRQLNSALPQDIESLTGGLAGSKGADPPEFAALTKELNACREQLLEKEEIESELKAERNRLLLEH
LECLVSRHERSLRMTVVKRQAQSPSGVSSEVEVLKALKSLFEHKKALDEKVRERLRLVSLERVSALEEEEL
AANQEIVALREQNVHIQRKMASSEGSTSEHLEGMPEGQKVHEKRLSNGSIDSTDETSQIVELQELLEKQ
NYEMAQMKERLAALSSRVGEVEQEAETARKDLIKTEEMNTKYQRDIREAMAQKEDMEERITTTLEKRYLSA
QRESTS IHDMNDKLENELANKEAILRQMEEKNRQLQERLELAEQKLQQTMRKAETLPEVEAELAQRIAAL
TKAERHGNI EERMRLHEGLQLEEKNQELQRARQREKMNEEHNKRLSDTVDRLLTESNERLQLHLKERMAA
LEEKNVL IQESETFRKNLEESLHDKERLAEEIEKLRELDQLKMRGSLIEPTIPRTHLDTSAELRYSVG
SLVDSQSDYRTTKVIRRRPRRGRMGVRRDEPKVKSLGDHEWNRTQQIGVLSHPFESDTEMSDIDDDDDRET
IFSMDLLSPSGHSDAQTLAMMLQEQLDAINKEIRLIQEEKESTELRAEEIENRVASVSLGNLNRVHP
GTSITASVTASSLASSPSPGHSTPKLTPRSPAREMDRMGVMTLPSDLRKHRRKIAVVEEDGREDKATIK
CETSPPTPRALRMTHTLPSSYHNDARSSLVSLPEPSLGLGSANSSQDSLHKAPKKKGIKSSIGRIFGK
KEKARLGQLRGFMETEAQAQESLGLGKLTQAEDRRLKKKHELLEEARRGLPF AQWDGPTVVAWLELW
LGMPAWYVAACRANVKSGAIMSALSDTEIQREIGISNPLHRLKRLAIQEMVSLTSPSAPTSRTPSGNV
WYTHEEMENLAAPAKTKESEEGSWAQTLAYGDMNHEWIGNEWLP SLGLPQYRSYFMECLVDARMLDHLTK
KDLRVHLKMVDSFHRTSLQYGMICLKRKNYDRKELERRREASQHEIKDVLVWSNDRVIRWIAIGLREYA
NNILES GVHGS LIALDENFDYSSLALLLQIPTQNTQARQILEREYNLLALGTERRLDESDDKNFRRGST
WRRQFPREVHGISMMPGSSETLPAGFRLTTTSGSRKMTTDVASSRLQLRDNSTVRTYSC
  
```

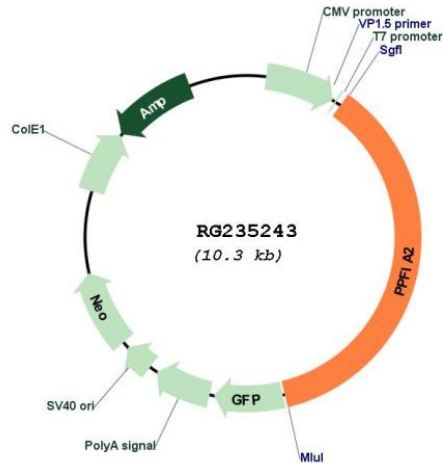
TRTRPLE - GFP Tag - V

Restriction Sites: SgfI-MluI

Cloning Scheme:



Plasmid Map:



ACCN: NM_001220476

ORF Size: 3753 bp

OTI Disclaimer: The molecular sequence of this clone aligns with the gene accession number as a point of reference only. However, individual transcript sequences of the same gene can differ through naturally occurring variations (e.g. polymorphisms), each with its own valid existence. This clone is substantially in agreement with the reference, but a complete review of all prevailing variants is recommended prior to use. [More info](#)

OTI Annotation: This clone was engineered to express the complete ORF with an expression tag. Expression varies depending on the nature of the gene.

Components: The ORF clone is ion-exchange column purified and shipped in a 2D barcoded Matrix tube containing 10ug of transfection-ready, dried plasmid DNA (reconstitute with 100 ul of water).

Reconstitution Method:

1. Centrifuge at 5,000xg for 5min.
2. Carefully open the tube and add 100ul of sterile water to dissolve the DNA.
3. Close the tube and incubate for 10 minutes at room temperature.
4. Briefly vortex the tube and then do a quick spin (less than 5000xg) to concentrate the liquid at the bottom.
5. Store the suspended plasmid at -20°C. The DNA is stable for at least one year from date of shipping when stored at -20°C.

RefSeq: [NM_001220476.2](#), [NP_001207405.1](#)

RefSeq Size: 5585 bp

RefSeq ORF: 3756 bp

Locus ID: 8499

UniProt ID: [O75334](#)

Cytogenetics: 12q21.31

Protein Families: Druggable Genome

Gene Summary: The protein encoded by this gene is a member of the LAR protein-tyrosine phosphatase-interacting protein (liprin) family. Liprins interact with members of LAR family of transmembrane protein tyrosine phosphatases, which are known to be important for axon guidance and mammary gland development. It has been proposed that liprins are multivalent proteins that form complex structures and act as scaffolds for the recruitment and anchoring of LAR family of tyrosine phosphatases. This protein has been shown to bind the calcium/calmodulin-dependent serine protein kinase (MAGUK family) protein (also known as CASK) and proposed to regulate higher-order brain functions in mammals. Alternative splicing results in multiple transcript variants. [provided by RefSeq, Sep 2013]