

Product datasheet for **RG235242**

Liprin alpha 2 (PPFIA2) (NM_001220473) Human Tagged ORF Clone

Product data:

Product Type:	Expression Plasmids
Product Name:	Liprin alpha 2 (PPFIA2) (NM_001220473) Human Tagged ORF Clone
Tag:	TurboGFP
Symbol:	PPFIA2
Mammalian Cell Selection:	Neomycin
Vector:	pCMV6-AC-GFP (PS100010)
E. coli Selection:	Ampicillin (100 ug/mL)
ORF Nucleotide Sequence:	>RG235242 representing NM_001220473 Red=Cloning site Blue=ORF Green=Tags(s)

TTTTGTAATACGACTCACTATAGGGCGGCCGGAATTCGTCGACTGGATCCGGTACCGAGGAGATCTGCC
GCC**CGATCGCC**

ATGATGTGTGAAGTGATGCCACGATTAATGAGGACACCCCAATGAGCCAAAGGGGTCCCAAAGCAGTG
GCTCGGACTCAGACTCCCATTTTGAGCAGCTGATGGTGAATATGCTAGATGAAAGGGATCGTCTTCTAGA
CACCTTCGGGAGACCCAGGAAAGCCTCTCACTTGCCAGCAAAGACTTCAGGATGTCATCTATGACCGA
GACTCACTCCAGAGACAGCTCAATTCAGCCCTGCCACAGGATATCGAATCCCTAACAGGAGGCTGGCTG
GTTCTAAGGGGGCTGATCCACCGGAATTTGCTGCACTGACAAAAGAATTAATGCCTGCAGGGAACAAT
TCTAGAAAAGGAAGAAGAAATCTCTGAACTTAAAGCTGAAAGAAACAACAAGACTATTACTGGAGCAT
TTGGAGTGCCTTGTCACGACATGAAAGATCACTAAGAATGACGGTGGTAAAACGGCAAGCCCAGTCTC
CCTCAGGAGTATCCAGTGAAGTTGAAGTTCTCAAGGCACTGAAATCTTTGTTGAGCACCACAAGGCCTT
GGATGAAAAGGTAAGGGAGCGACTGAGGGTTTCTTTAGAAAGAGTCTCTGCACTGGAAGAAGAAGTACTG
GCTGCTAATCAGGAGATTGTTGCCTTGCCTGAACAAAATGTTTATACAAAGAAAAATGGCATCAAGCG
AGGGATCCACAGAGTCAGAACATCTTGAAGGGATGGAACCTGGACAGAAAGTCCATGAGAAGCGTTTGT
CAATGGTTCTATAGACTCAACCGATGAACTAGTCAAATAGTTGAACTACAAGAATTGCTTGAAGGCAA
AACTATGAAATGGCCAGATGAAAGAAGCTTTAGCAGCCCTTTCTCCCGAGTGGGAGAGGTGGAACAGG
AAGCAGAGACAGCAAGAAAGGATCTCATTAAAACAGAAGAAATGAACACCAAGTATCAAAGGACATTAG
GGAGGCCATGGCACAAAAGGAAGATATGGAAGAAAGAATTACAACCCCTGAAAAGCGTTACCTCAGTGCT
CAGAGAGAATCTACCTCCATACATGACATGAATGATAAACTAGAAAATGAGTTAGCAAATAAAGAAGCTA
TCCTGCGGCAGATGGAAGAGAAAAACAGACAGTTACAAGAACGCTTTGAGCTAGCTGAACAAAAGTTGCA
GCAGACCATGAGAAAGGCTGAAACCTTGCTGAAAGTAGAGGCTGAACTGGCTCAGAGAATTGCAGCCCTA
ACCAAGGCTGAAGAGAGACATGGAATATTGAAGAACGTATGAGACATTTAGAGGGTCAACTGAAGAGA
AGAATCAAGAACTTCAAAGAGCTAGGCAAAGAGAGAAAAATGAATGAGGAGCATAACAAGAGATTATCGGA
TACGGTTGATAGACTTCTGACTGAATCCAATGAACGCCTACAACACTACACTTAAAGGAAAGAATGGCTGCT
CTAGAAGAAAAGAATGTTTTAATTCAAGAATCAGAAACTTTAGAAAGAATCTTGAAGAATCTTTACATG
ATAAGGAAAGATTAGCAGAAGAAATTGAAAAGCTGAGATCTGAACTTGACCAATTGAAAATGAGAACTGG



[View online >](#)

CTCTTTAATTGAACCCACAATACCAAGAACTCATCTAGACACCTCAGCTGAGTTGCGGTA CTCACTGAGTGGGA
TCCCTAGTGGACAGCCAGTCTGATTACAGAACTAAAGTAATAAGAAGACCAAGGAGAGGCCGCATGG
GTGTGCGAAGAGATGAGCCAAAGGTGAAATCTCTTGGGGATCACGAGTGGAACTAGAACTCAACAGATTGG
AGTACTAAGCAGCCACCCCTTTTGAAGTGACACTGAAATGTCTGATATTGATGATGATGACAGAGAAACA
ATTTTTAGCTCAATGGATCTTCTCTCCAAGTGGTCATTCGGATGCCAGACGCTAGCCATGATGCTTC
AGGAACAATTGGATGCCATCAACAAAGAAATCAGGCTAATTCAGGAAGAAAAAGAACTACAGAGTTGCC
TGCTGAAGAAATTGAAAATAGAGTGGCTAGTGTGAGCCTCGAAGGCCTGAATTTGGCAAGGGTCCACCCA
GGTACCTCCATTACTGCCCTGTACAGCTTCATCGCTGGCCAGTTCATCTCCCCCAGTGGACACTCAA
CTCCAAAGCTCACCCCTCGAAGCCTGCCAGGAAATGGATCGGATGGGAGTCATGACACTGCCAAGTGA
TCTGAGGAAACATCGGAGAAAGATTGCAGTTGTGGAAGAAGATGGTCGAGAGGACAAAGCAACAATAAA
TGTGAACTTCTCCTCCTACCCCTAGAGCCCTCAGAATGACTCACACTCTCCCTTCTCCTACCACA
ATGATGCTCGAAGTAGTTTATCTGTCTCTTGAGCCAGAAAGCCTCGGGCTTGGTAGTCCAACAGCAG
CCAAGACTCTTTCACAAAGCCCCAAGAAGAAAGGAATCAAGTCTTCAATAGGACGTTTGTGGTAA
AAAGAAAAGCTCGACTTGGGCAGCTCCGAGGCTTTATGGAGACTGAAGCTGCAGCTCAGGAGTCCCTGG
GGTTAGGCAAACCGAACTCAAGCTGAGAAGGATCGAAGACTAAAGAAAAGCATGAACCTCTTGAAGA
AGCTCGGAGAAAAGGATTACCTTTGCCAGTGGGATGGGCAACTGTGGTCGCATGGCTAGAGCTTTGG
TTGGGAATGCCTGCGTGGTACGTGGCAGCCTGCCGAGCCAACGTGAAGAGTGGTGCCATCATGTCTGCTT
TATCTGACACTGAGATCCAGAGAGAAAATGGAATCAGCAATCCACTGCATCGCTTAAAACCTCGATTAGC
AATCCAGGAGATGGTTTCCCTAACAAAGTCTTACAGCTCCTCCAACATCTCGAACTCCTCAGGCAACGTT
TGGGTGACTCATGAAGAAATGAAAAATCTGCAGCTCCAGCAAAAACGAAAGAATCTGAGGAAGGAAGCT
GGGCCAGTGTCCGGTTTTCTACAGACCCTGGCTTATGGAGATATGAATCATGAGTGGATTGGAATGA
ATGGCTTCCCAGCTTGGGGTACCTCAGTACAGAAGTACTTTATGGAATGCTTGGTAGATGCAAGAATG
TTAGATCACCTAACAAAAAAGATCTCCGTGCCATTTAAAAATGGTGGATAGTTCCATCGAACAAGTT
TACAATATGGAATTATGTGCTTAAAGAGGTTGAATTATGACAGAAAAGAACTAGAAAAGAAGACGGGAAGC
AAGCCAACATGAAATAAAAGACGTGTTGGTGTGGAGCAATGACCGAGTTATTCGCTGGATACAAGCAATT
GGACTTCGAGAATATGCAATAATATACTTGAGAGCGGTGTGCATGGCTCACTTATAGCCCTGGATGAAA
ACTTTGACTACAGCAGCTTAGCTTTATTATTACAGATTCCAACACAGAACACCCAGGCAAGGCAGATTCT
TGAAAGAGAATAACAATAACCTCTTGGCCCTGGAACTGAAAGGCGACTGGATGAAAGTGTGACAAGAAC
TTCAGACGTGGATCAACCTGGAGAAGGCAGTTTCCCTCGTGAAGTACATGGAATCAGCATGATGCCTG
GGTCTCAGAAACATTACCAGCTGGATTTAGGTTAACCACAACCTCTGGGCAGTCAAGAAAAATGACAAC
AGATGATGGCGTCTTTTCACTACTCTACC

ACGCGTACGCGGCCGCTCGAG - GFP Tag - GTTTAA

Protein Sequence: >RG235242 representing NM_001220473
 Red=Cloning site Green=Tags(s)

MMCEVMP TINEDTPMSQRGSQSSGSDSDSHFEQLMVNMLDERDRLLDTLRETQESLSLAQQRLQDVIYDR
 DSLQRQLNSALPQDIESLTGGLAGSKGADPPEFAALTKELNACREQLLEKEEEISELKAERNRLLLEH
 LECLVSRHERSLRMTVVKRQAQSPSGVSSEVEVLKALKSLFEHHKALDEKVRERLRLVSLERVSAL EEELA
 AANQEIVALREQNVHIQRKMASSEGSTESEHLEGMPEGQKVHEKRLSNGSIDSTDETSQIVELQELLEKQ
 NYEMAQMKERLAALSSRVGEVEQEAETARKDLIKTEEMNTKYQRDIREAMAQKEDMEERITTTLEKRYLSA
 QRESTSIHDMNDKLENELANKEAILRQMEEKNRQLQERLELAEQKLQQTMRKAETLPEVEAELAQR IAAL
 TKAEERHGNI EERMRLHEGLQLEEKNQELQRARQREKMNEEHNKRLSDTVDRLLTESNERLQLHLKERMAA
 LEEKNVLIQESETFRKNLEESLHDKERLAEEIEKLRSELDQLKMRGSLIEPTIPRTHLDTSAELRYSVG
 SLVDSQSDYRTTKVIRRRPRGRMGVRRDEPKVKSLGDHEWNRTQQIGVLSHPFESDTEMSDIDDDDDRET
 IFSSMDLLSPSGHSDAQTAMMLQEQLDAINKEIRLIQEEKESTELRAEEIENRVASVSLGLNLARVHP
 GTSITASVTASSLASSPSPGHSTPKLTPRSPAREMDRMGVM TLPSDLRKHRRKIAVVEEDGREDKATIK
 CETSPPTPRALRMTHTLPSSYHNDARSSLVSLPEPSLGLGSANSSQDSLHKAPKKKGIKSSIGRLF GK
 KEKARLGQLRGFMETEA AAQESLGLGKLTQA EKDRRLKKKHELLEEARRKGLPF AQWDGPTVVAWLELW
 LGMPAWYVAACRANVKSGAIMSALSDTEIQREIGISNPLHRLKRLAIQEMVSLTSPSAPTSRTPSGNV
 WYTHEEMENLAAPAKTKESEEGSWAQC PVFLQTLAYGDMNHEWIGNEWLP SLGLPQYRSYFMECLVDARM
 LDHLTKKDLRVHLKMVDSFHRTSLQYGIMCLKRLNYDRKELERRREASQHEIKDVLVWSNDRVIRWIQAI
 GLREYANNILESGVHGSLIALDENFDYSSLALLLQIPTQNTQARQILEREYNNLLALGTERRLDESDDKN
 FRRGSTWRRQFPFREVHGISMMPGSSETLPAGFRLTTTSGQSRKMTTDDGVFSVYST

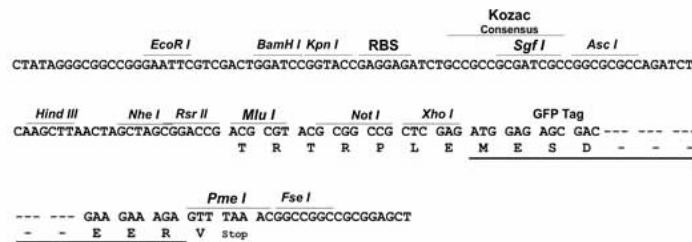
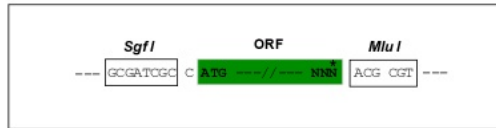
TRTRPLE - GFP Tag - V

Restriction Sites:

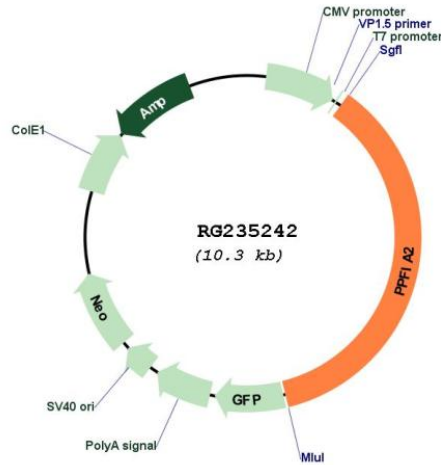
Sgfl-MluI

Cloning Scheme:

Cloning sites used for ORF Shutting:



Plasmid Map:



ACCN: NM_001220473

ORF Size: 3741 bp

OTI Disclaimer: The molecular sequence of this clone aligns with the gene accession number as a point of reference only. However, individual transcript sequences of the same gene can differ through naturally occurring variations (e.g. polymorphisms), each with its own valid existence. This clone is substantially in agreement with the reference, but a complete review of all prevailing variants is recommended prior to use. [More info](#)

OTI Annotation: This clone was engineered to express the complete ORF with an expression tag. Expression varies depending on the nature of the gene.

Components: The ORF clone is ion-exchange column purified and shipped in a 2D barcoded Matrix tube containing 10ug of transfection-ready, dried plasmid DNA (reconstitute with 100 ul of water).

- Reconstitution Method:
1. Centrifuge at 5,000xg for 5min.
 2. Carefully open the tube and add 100ul of sterile water to dissolve the DNA.
 3. Close the tube and incubate for 10 minutes at room temperature.
 4. Briefly vortex the tube and then do a quick spin (less than 5000xg) to concentrate the liquid at the bottom.
 5. Store the suspended plasmid at -20°C. The DNA is stable for at least one year from date of shipping when stored at -20°C.

RefSeq: [NM_001220473.3](#)

RefSeq Size: 5699 bp

RefSeq ORF: 3744 bp

Locus ID: 8499

Cytogenetics: 12q21.31

Protein Families: Druggable Genome

Gene Summary: The protein encoded by this gene is a member of the LAR protein-tyrosine phosphatase-interacting protein (liprin) family. Liprins interact with members of LAR family of transmembrane protein tyrosine phosphatases, which are known to be important for axon guidance and mammary gland development. It has been proposed that liprins are multivalent proteins that form complex structures and act as scaffolds for the recruitment and anchoring of LAR family of tyrosine phosphatases. This protein has been shown to bind the calcium/calmodulin-dependent serine protein kinase (MAGUK family) protein (also known as CASK) and proposed to regulate higher-order brain functions in mammals. Alternative splicing results in multiple transcript variants. [provided by RefSeq, Sep 2013]