

Product datasheet for **RG235230**

Liprin alpha 2 (PPFIA2) (NM_001220474) Human Tagged ORF Clone

Product data:

Product Type:	Expression Plasmids
Product Name:	Liprin alpha 2 (PPFIA2) (NM_001220474) Human Tagged ORF Clone
Tag:	TurboGFP
Symbol:	PPFIA2
Mammalian Cell Selection:	Neomycin
Vector:	pCMV6-AC-GFP (PS100010)
E. coli Selection:	Ampicillin (100 ug/mL)
ORF Nucleotide Sequence:	>RG235230 representing NM_001220474 Red=Cloning site Blue=ORF Green=Tags(s)

TTTTGTAATACGACTCACTATAGGGCGGCCGGAATTCGTCGACTGGATCCGGTACCGAGGAGATCTGCC
GCC**CGATCGCC**

ATGATGTGTGAAGTGATGCCACGATTAATGAGGACACCCCAATGAGCCAAAGGGGTCCCAAAGCAGTG
GCTCGGACTCAGACTCCCATTTTGAGCAGCTGATGGTGAATATGCTAGATGAAAGGGATCGTCTTCTAGA
CACCTTCGGGAGACCCAGGAAAGCCTCTCACTTGCCAGCAAAGACTTCAGGATGTCATCTATGACCGA
GACTCACTCCAGAGACAGCTCAATTCAGCCCTGCCACAGGAATTTGCTGCACTGACAAAAGAATTAATG
CCTGCAGGGAACAATTCTAGAAAAGGAAGAAGAAATCTCTGAACCTAAAGCTGAAAGAAAACAACAAG
ACTATTACTGGAGCATTGGAGTGCCTTGTGTCACGACATGAAAGATCACTAAGAATGACGGTGGTAAAA
CGCAAGCCAGTCTCCCTCAGGAGTATCCAGTGAAGTTGAAGTTCTCAAGGCACTGAAATCTTTGTTTG
AGCACCACAAGGCCTTGATGAAAAGGTAAGGGAGCGACTGAGGGTTTCTTTAGAAAAGAGTCTGCACT
GGAAGAAGAACTAGCTGCTGCTAATCAGGAGATTGTTGCCTTGCCTGAACAAAATGTTTCATATACAAGA
AAAATGGCATCAAGCGAGGGATCCACAGAGTCAGAATCTTGAAGGGATGGAACCTGGACAGAAAGTCC
ATGAGAAGCGTTTGTCCAATGGTTCTATAGACTCAACCGATGAAACTAGTCAAATAGTTGAACTACAAGA
ATTGCTTGAAGAAGCAAACTATGAAATGGCCAGATGAAAGAACGTTTAGCAGCCCTTTCTCCCGAGTG
GGAGAGGTGGAACAGGAAGCAGAGACAGCAAGAAAGGATCTCATTAAAACAGAAGAAATGAACCCAAGT
ATCAAAGGGACATTAGGGAGGCCATGGCACAAAAGGAAGATATGGAAGAAAGAATTACAACCTTAAAA
GCGTTACCTCAGTCTCAGAGAGAACTACCTCCATACATGACATGAATGATAAACTAGAAAATGAGTTA
GCAAAATAAGAAGCTATCCTGCGGCAGATGGAAGAGAAAAACAGACAGTTACAAGAACGCTTTGAGCTAG
CTGAACAAAAGTTGCAGCAGACCATGAGAAAGGCTGAAACCTTGCTGAAGTAGAGGCTGAACTGGCTCA
GAGAATTGCAGCCCTAACCAAGGCTGAAGAGAGACATGGAATATTGAAGAACGTATGAGACATTTAGAG
GGTCAACTGAAGAGAAGAATCAAGAATTCAAAGAGCTAGGCAAAGAGAGAAAAATGAATGAGGAGCATA
ACAAGAGATTATCGGATACGGTTGATAGACTTCTGACTGAATCCAATGAACGCCTACAACCTACACTTAAA
GGAAAGAATGGCTGCTCTAGAAGAAAAGAATGTTTTAATCAAGAATCAGAACTTTCAGAAAGAATCTT
GAAGAATCTTTACATGATAAGGAAAGATTAGCAGAAGAATGAAAGCTGAGATCTGAACCTGACCAAT
TGAAGAATGAGAACTGGCTCTTAATTGAACCCACAATACCAAGAATCATCTAGACACCTCAGCTGAGTT



[View online »](#)

GCGGTA CTCA GTGGGATCCCTAGTGGACAGCCAGTCTGATTACAGAACA ACTAAAGTAATAAGAAGACCA
 AGGAGAGGCCGCATGGGTGTGCGAAGAGATGAGCCAAAGGTGAAATCTCTTGGGGATCACGAGTGGAA
 TAACTCAACAGATTGGAGTACTAAGCAGCCACCCTTTTAAAAGTGACACTGAAATGTCTGATATTGATGA
 TGATGACAGAGAAAACAATTTTTAGTCAATGGATCTTCTCTCTCCAAGTGGTCATTCCGATGCCAGACG
 CTAGCCATGATGCTTCAGGAACAATTGGATGCCATCAACAAGAAATCAGGCTAATTCAGGAAGAAAAAG
 AATCTACAGAGTTGCGTGTGAAGAAATGAAAATAGAGTGGCTAGTGTGAGCCTCGAAGGCCTGAATTT
 GGCAAGGGTCCACCCAGGTACCTCATTACCTCTGTTACAGCTTCATCGCTGGCCAGTTCATCTCCC
 CCCAGTGGACACTCAACTCCAAAGCTCACCCCTCGAAGCCCTGCCAGGGAAATGGATCGGATGGGAGTCA
 TGACACTGCCAAGTGATCTGAGGAAACATCGGAGAAAGATTGCAGTTGTGGAAGAAGATGGTCGAGAGGA
 CAAAGCAACAATTAATGTGAAACTTCTCTCTCTACCCTAGAGCCCTCAGAATGACTCACACTCTC
 CCTTCTCTCTACCACAATGATGCTCGAAGTAGTTTATCTGTCTCTCTTGAGCCAGAAAGCCTCGGGCTTG
 GTAGTGCCAACAGCAGCCAAGACTCTCTCACAAAGCCCCAAGAAGAAAGGAATCAAGTCTTCAATAGG
 ACGTTTGTGGTAAAAAAGAAAAGCTCGACTGGGCAGCTCCGAGGCTTTATGGAGACTGAAGCTGCA
 GCTCAGGAGTCCCTGGGTTAGGCAAATCGGAACTCAAGCTGAGAAGGATCGAAGACTAAAGAAAAACA
 CATCTGGGCATGAACTTCTTGAAGAAGCTCGGAGAAAGGGATTACCTTTTGGCCAGTGGGATGGGCCAAC
 TGTGGTCGCATGGCTAGAGCTTTGGTTGGGAATGCCTGCGTGGTACGTGGCAGCCTGCCGAGCCAACGTG
 AAGAGTGGTGCCATCATGTCTGTCTTATCTGACTGAGATCCAGAGAGAAATGGAATCAGCAATCCAC
 TGCATCGCTTAAACTTCGATTAGCAATCCAGGAGATGGTTTCCCTAACAAAGTCTTCAGCTCCTCCAAC
 ATCTCGAACTCCTTCAGGCAACGTTTGGGTGACTCATGAAGAAATGGAATCTTGCAGCTCCAGCAAAA
 ACGAAAGAATCTGAGGAAGGAAGCTGGGCCAGTGTCCGGTTTTCTACAGACCTGGCTTATGGAGATA
 TGAATCATGAGTGGATTGGAAATGAATGGCTTCCAGCTTGGGGTTACCTCAGTACAGAAGTTACTTTAT
 GGAATGCTTGGTAGATGCAAGAATGTTAGATCACCTAACAAAAAAGATCTCCGTGTCCATTTAAAAATG
 GTGGATAGTTCCATCGAACAAGTTTACAATATGGAATATGTGCTTAAAGAGGTTGAATATGACAGAA
 AAGAACTAGAAAAGAGACGGGAAGCAAGCCAACATGAAATAAAAGACGTGTTGGTGTGGAGCAATGACCG
 AGTTATTCGCTGGATACAAGCAATTGGACTTCGAGAATATGCAAATAATACTTGAGAGCGGTGTGCAT
 GGCTCACTTATAGCCCTGGATGAAAACCTTGGACTACAGCAGCTTAGCTTTATTATTACAGATTCCAACAC
 AGAACACCCAGGCAAGGCAGATTCTTGAAGAGAATAACAATAACCTCTTGGCCCTGGGAAGTAAAGGCG
 ACTGGATGAAAGTGATGACAAGA ACTTCAGACGTGGATCAACCTGGAGAAGGCAGTTTCTCTCTCGTAA
 GTACATGGAATCAGCATGATGCCTGGTCTCAGAAACATTACCAGCTGGATTTAGGTTAACCACAACCT
 CTGGGCAGTCAAGAAAAATGACAACAGATGATGGCGTCTTTTCAGTCTACTCTACC

ACGCGTACGCGGCCGCTCGAG – GFP Tag – GTTTAA

Protein Sequence: >RG235230 representing NM_001220474
 Red=Cloning site Green=Tags(s)

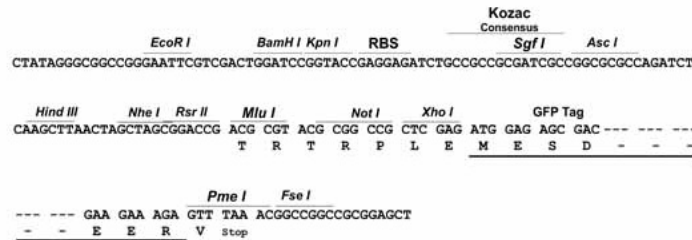
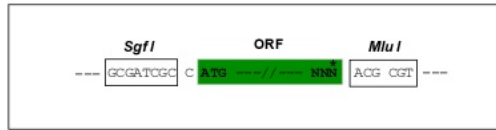
MMCEVMP TINEDTPMSQRGSQSSGSDSDSHFEQLMVNMLDERDRLLDTLRETQESLSLAQQRLQDVIYDR
 DSLQRQLNSALPQEF AALTKELNACREQLLEKEEEISELKAERNNTRLLLEHLECLVSRHERSLRMTVVK
 RQAQSPSGVSSEVEVLKALKSLFEHKKALDEKVRERLRVSLERVSAL EEEELAAANQEIVALREQNVHIQR
 KMASSEGSTSEHLEGMPEPGQKVHEKRLSNGSIDSTDETSQIVELQELLEKQNYEMAQMKERLAALSSRV
 GEVEQEAETARKDLIKTEEMNTKYQRDIREAMAQKEDMEERITTL EKRYLSAQRESTSIHDMNDKLENEL
 ANKEAILRQMEEKNRQLQERLELAEQKLQQTMRKAETLPEVEAELAQR IAALTKAEERHGNIEERMHLE
 GQLEEKQELQARARQREKMNEEHNKRLSDTVDRLLTESNERLQLHLKERMAALEEKNVLIQESETFKNL
 EESLHDKERLAEIEKLRSELDQLKMR TGSLIEPTIPRTHLDTS AELRYSVGS LVDSQSDYRTTKVIRRP
 RRRGMGVR RDEPKVKS LGDHEWNR TQQIGVLSHPFESDTEMSDIDDDRETIFSSMDLLSPSGHSDAQT
 LAMMLQEQLDAINKEIRLIQEEKESTELRAEEIENRVASVSLEGLNLRVHPGTSITASVTASSLASSSP
 PSGHSTPKLTPRSPAREMDRMGVM TLP SDRKRRKIAVVEEDGREDKATIKCETSPPTPRALRMHTL
 PSSYHNDARSSLSVLEPESLGLGSANSSQDSLHKAPKKKGIKSSIGRLF GKKEKARLGQLRGMETEAA
 AQESLGLGKLGTAEKDRRLKKNTSGHELLEEARR KGLPFAQWDGPTVVAWLELWLGMPAWYVAACRANV
 KSGAIMSALSDTEIQREIGISNPLHRLKRLAIQEMVSLTSPSAPPTSRTPSGNVVWTHEEMENLAAPAK
 TKESEEGSWAQC PVFLQTLAYGDMNHEWIGNEWLP SGLPQYRSYFMECLVDARMLDHLTKKDLRVHLKM
 VDSFHRTSLQYIGIMCLKRLNYDRKELERRREASQHEIKDVLVWSNDRVIRWIQAIGLREYANNILESGVH
 GSLIALDENFDYSSLALLLQIPTQNTQARQILEREYNLLALGTERRLDESDDKNFRRGSTWRRQFFPRE
 VHGISMMPGSSETLPAGFRLTTTSGQSRKMTTDDGVF SVYST

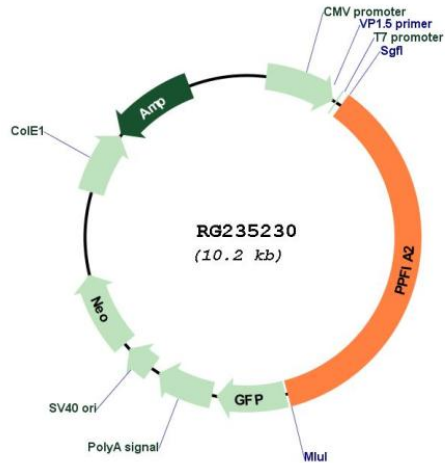
TRTRPLE - GFP Tag - V

Restriction Sites: SgfI-MluI

Cloning Scheme:

Cloning sites used for ORF Shutting:



Plasmid Map:


ACCN: NM_001220474

ORF Size: 3696 bp

OTI Disclaimer: The molecular sequence of this clone aligns with the gene accession number as a point of reference only. However, individual transcript sequences of the same gene can differ through naturally occurring variations (e.g. polymorphisms), each with its own valid existence. This clone is substantially in agreement with the reference, but a complete review of all prevailing variants is recommended prior to use. [More info](#)

OTI Annotation: This clone was engineered to express the complete ORF with an expression tag. Expression varies depending on the nature of the gene.

Components: The ORF clone is ion-exchange column purified and shipped in a 2D barcoded Matrix tube containing 10ug of transfection-ready, dried plasmid DNA (reconstitute with 100 ul of water).

Reconstitution Method:

1. Centrifuge at 5,000xg for 5min.
2. Carefully open the tube and add 100ul of sterile water to dissolve the DNA.
3. Close the tube and incubate for 10 minutes at room temperature.
4. Briefly vortex the tube and then do a quick spin (less than 5000xg) to concentrate the liquid at the bottom.
5. Store the suspended plasmid at -20°C. The DNA is stable for at least one year from date of shipping when stored at -20°C.

RefSeq: [NM_001220474.3](#)

RefSeq Size: 5654 bp

RefSeq ORF: 3699 bp

Locus ID: 8499

UniProt ID: [O75334](#)

Cytogenetics: 12q21.31

Protein Families: Druggable Genome

Gene Summary: The protein encoded by this gene is a member of the LAR protein-tyrosine phosphatase-interacting protein (liprin) family. Liprins interact with members of LAR family of transmembrane protein tyrosine phosphatases, which are known to be important for axon guidance and mammary gland development. It has been proposed that liprins are multivalent proteins that form complex structures and act as scaffolds for the recruitment and anchoring of LAR family of tyrosine phosphatases. This protein has been shown to bind the calcium/calmodulin-dependent serine protein kinase (MAGUK family) protein (also known as CASK) and proposed to regulate higher-order brain functions in mammals. Alternative splicing results in multiple transcript variants. [provided by RefSeq, Sep 2013]