

Product datasheet for **RG235216**

KCNMA1 (NM_001271519) Human Tagged ORF Clone

Product data:

Product Type:	Expression Plasmids
Product Name:	KCNMA1 (NM_001271519) Human Tagged ORF Clone
Tag:	TurboGFP
Symbol:	KCNMA1
Synonyms:	bA205K10.1; BKTM; CADEDS; hSlo; IEG16; KCa1.1; LIWAS; MaxiK; mSLO1; PNKD3; SAKCA; SLO; SLO-ALPHA; SLO1
Mammalian Cell Selection:	Neomycin
Vector:	pCMV6-AC-GFP (PS100010)
E. coli Selection:	Ampicillin (100 ug/mL)
ORF Nucleotide Sequence:	>RG235216 representing NM_001271519 Red=Cloning site Blue=ORF Green=Tags(s)

TTTTGTAATACGACTCACTATAGGGCGGCCGGGAATTCGTCGACTGGATCCGGTACCGAGGAGATCTGCC
GCC**CGATCGCC**

ATGGCAAATGGTGGCGGGCGGGCGGGCAGCAGCGGGCGGGCGGGCGGGCGGGAGGCAGCAGTCTTA
GAATGAGTAGCAATATCCACGCGAACCATCTCAGCCTAGACGCGTCTCCTCCTCCTCCTCCTCCTCCT
CTCTTCTTCTTCTCCTCCTCCTCCTCCTCCTCGTCCGCTCCACGAGCCCAAGATGGATGCGCTCATC
ATCCCGGTGACCATGGAGGTGCCGTGCGACAGCCGGGGCCAAACGCATGTGGTGGGCTTCTCCTGCGCTCCT
CCATGGTGACTTCTTCCGGGGCCTCTTCATCATCTTGCTCTGGCGGACGCTCAAGTACCTGTGGACCGT
GTGCTGCCACTGCGGGGCAAGACGAAGGAGGCCAGAAGATTAACAATGGCTCAAGCCAGGCGGATGGC
ACTCTCAAACCAGTGGATGAAAAAGAGGAGGCAGTGGCCGCCGAGGTCGGCTGGATGACCTCCGTGAAGG
ACTGGGCGGGGGTATGATATCCGCCAGACACTGACTGGCAGAGTCTGGTTGTCTTAGTCTTTGCTCT
CAGCATCGGTGCACTTGAATATACTTCATAGATTCATCAAACCAATAGAATCCTGCCAGAATTTCTAC
AAAGATTTACATTACAGATCGACATGGCTTTCACAGTGTCTTCTCCTTCTACTTCGGCTTGGCGTTTA
TTGAGCAACGATAAATTTGGTCTGGCTGGAAGTGAAGTCTGTAGTGGATTTCTTACGGTGGCCCC
CGTGTGGTGTCTGTACTTAAACAGAAGTGGCTTGGTTGGATTTTAAAGACTCTGAGACTGATA
CAGTTTTCAGAAATTTGAGTTTCTGAATATTCTTAAACAAGTAATCCATCAAGCTGGTGAATCTGC
TCTCCATATTTATCAGCACGTGGCTGACTGCAGCCGGTTCATCCATTTGGTGGAGAATTCAGGGGACCC
ATGGGAAAATTTCAAACAACAGGCTCTCACCTACTGGAAATGTGCTATTTACTCATGGTCAACAATG
TCCACCGTTGGTTATGGGATGTTTATGCAAAAACACACTTGGGCGCCTTTCATGGTCTTCTTATCCTC
TCGGGGGACTGGCCATGTTTGCAGCTACGTCCCTGAAATCATAGAGTTAATAGGAAACCGCAAGAATA
CGGGGGCTCCTATAGTGGGTTAGTGGAAAGAACACATTGTGGTCTGCGGACACATCACTCTGGAGAGT
GTTTCCAACCTTCTGAAGGACTTCTGCACAAGGACCGGATGACGTCAATGTGGAGATCGTTTTCTTCTC
ACAACATCTCCCCAACCTGGAGCTTGAAGCTCTGTTCAAACGACATTTTACTCAGTGGAATTTTATCA



GGGTTCCGTCCTCAATCCACATGATCTTGCAAGAGTCAAGATAGAGTCAGCAGATGCATGCCTGATCCTT
GCCAACAAAGTACTGCGCTGACCCGGATGCGGAGGATGCCTCGAATATCATGAGAGTAATCTCCATAAAGA
ACTACCATCCGAAGATAAGAATCACTCAAAATGCTGCAGTATCACAACAAGGCCCATCTGCTAAACAT
CCCAGCTGGAATTGGAAAGAAGGTGATGACGCAATCTGCCTCGCAGAGTTGAAGTTGGGCTTCATAGCC
CAGAGCTGCCTGGCTCAAGGCCCTCCACCATGCTTGCCAACCTTTCTCCATGAGGTATTTCATAAAGA
TTGAGGAAGACACATGGCAGAAAATACTACTTGGAAAGGAGTCTCAAATGAAATGTACACAGAATATCTCTC
CAGTGCCTTCGTGGGTCTGTCTCCCTACTGTTTGTGAGCTGTGTTTTGTGAAGCTCAAGCTCCTAATG
ATAGCCATTGAGTACAAGTCTGCCAACCGAGAGAGCCGTATATTAATTAATCCTGGAAACCATCTTAAGA
TCCAAGAAGTACTTTAGGATTTTTTCATCGCAAGTGTGCCAAAGAAGTTAAAAGGGCATTTTTTTACTG
CAAGGCCGTGCATGATGACATCACAGATCCCAAAAAGAATAAAAAAATGTGGCTGCAAACGGCTGATATAT
TTTGAAGATGAGCAGCCGTCAACACTATCACCAAAAAAAGCAACGGAATGGAGGCATGCGGAACCTCAC
CCAACACCTCGCCTAAGCTGATGAGGCATGACCCCTTGTAAATCCTGGCAATGATCAGATTGACAAACAT
GGACTCCAATGTGAAGAAGTACGACTCTACTGGGATGTTTCACTGGTGTGCACCCAAGGAGATAGAGAAA
GTCATCCTGACTCGAAGTGAAGTGCCATGACCGTCTGAGTGGCCATGTCGTGGTCTGCATCTTTGGCG
ACGTCAGCTCAGCCCTGATCGGCCCTCCGGAACCTGGTGTGCCGCTCCGTGCCAGCAACTTTCATTACCA
TGAGCTCAAGCACATTGTGTTTTGTGGGCTCTATTGAGTACCTCAAGCGGGAATGGAGACGCTTCATAAC
TTCCCCAAAGTGTCCATATTGCCTGGTACGCCATTAAGTCGGGCTGATTTAAGGGCTGTCAACATCAACC
TCTGTGACATGTGCGTTATCCTGTGACCAATCAGAATAATATTGATGATACTTCGCTGCAGGACAAGGA
ATGCATCTTGGCGTCACTCAACATCAAATCTATGCAGTTTGTGACAGCATCGGAGTCTTGCAGGCTAAT
TCCCAAGGGTTCACACCTCCAGGAATGGATAGATCCTCTCCAGATAACAGCCCAGTGCACGGGATGTTAC
GTCAACCATCCATCACAACCTGGGGTCAACATCCCATCATCACTGAACTAGCTAAACCGGCAAGTTGCC
TTTGGTATCAGTCAATCAGGAAAAAACAGTGGGACGCACATTCTAATGATAACTGAACTGGTGAACGAT
ACTAATGTTTCAAGTTTTTGGACCAAGACGATGATGATGACCTGATACAGAACTGTACCTCACGCAGCCCT
TTGCCTGTGGGACAGCATTTGCCGTCAAGTGTCTGGACTCACTCATGAGCGGACGTAATCAATGACAA
TATCCTCACCCCTGATACGGACCCCTGGTGACCGGAGGAGCCACGCCGAGCTGGAGGCTCTGATTGCTGAG
GAAAACGCCCTTAGAGGTGGCTACAGCACCCCGCAGACTGGCCAATAGGGACCGCTGCCGCGTGGCCC
AGTTAGCTCTGCTCGATGGGCCATTTGCGGACTTAGGGGATGGTGGTGTATGGTATCTGTTCTGCAA
AGCTCTGAAAACATATAATATGCTTTGTTTTGGAATTTACCGGCTGAGAGATGCTCACCTCAGCACCCCC
AGTCAGTGCACAAAGAGGTATGTCATACCAACCCGCCCTATGAGTTTGAAGCTCGTCCGACGGACCTGA
TCTTCTGCTTAATGCAGTTTACCACAATGCCGGCCAGTCCCGGCCAGCCTGTCCATTCTCCCACTC
GTCGAGTCTCCAGCAAGAAGAGCTCCTCTGTTCACTCCATCCATCCACAGCAAACCGACAGAACCGG
CCCAAGTCCAGGGAGTCCCGGGACAAACAGAAGTACGTGCAGGAAGAGCGGCTT

AGCGGACCGACGCGTACGCGGCCGCTCGAG - GFP Tag - GTTTAA

Protein Sequence: >RG235216 representing NM_001271519
 Red=Cloning site Green=Tags(s)

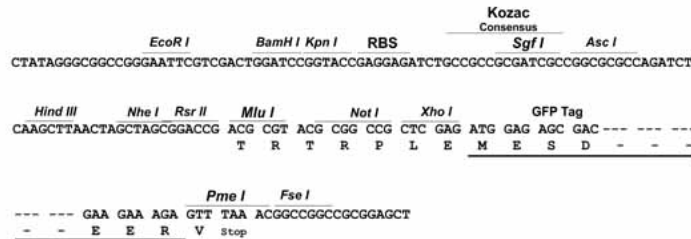
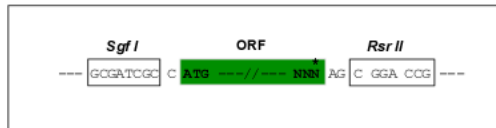
MANGGGGGGGSSGGGGGGSSLRMSSNIHANHLSLDASSSSSSSSSSSSSSSSSSSSSSSVHEPKMDALI
 IPVTMEVPCDSRQRMWWAFLASSMVTFFGGFLIILLWRTLKYLWTVCCCHGGKTKEAQKINNGSSQADG
 TLKPVDEKEEAVAAEVGWMTSVKDWAGVMISAQTLTGRVLVVLFALSIGALVIYFIDSSNPIESCQNFY
 KDFTLQIDMAFNVFLLYFGLRFIAANDKLWFLEVNVSVDFFTVPPVFSVYLNRSWLGRLRFLRALRLI
 QFSEILQFLNILKTSNSIKLVNLLSIFISTWLTAAGF IHLVENSQDPWENFQNNQALTYWECVYLLMVTM
 STVGYGDVYAKTTLGRLFMVFFILGGLAMFASYVPEIIEILIGNRKKYGGSYSAVSGRKHIVVCGHITLES
 VSNFLKDFLHKDRDDVNVEIVFLHNI SPNLELEALFKRHFTQVEFYQGSVLNPHDLARVKIESADAACLIL
 ANKYCADPDAEDASNIMRVISIKNYHPKIRIITQMLQYHNKAHLLNIPSWNKEGDDAICLAELKLGFAIA
 QSCLAQGLSTMLANLFSMRSF I KIEEDTWQKYYLEGVSNEMYTEYLSSAFVGLSFPTVCELFCVVKLKLMM
 IAIEYKSANRESRILINPGNHLKIQEGTLGFFIASDAKEVKRAFFYCKACHDDITDPKRIKCKGCKRLIY
 FEDEQPSTLSPKKQRNGGMRNSPNTSPKLMRHDPLLIPGNDQIDNMSNVKKYDSTGMFHWCAPKEIEK
 VILTRSEAMTVLSGHVVVICFGDVSSALIGLRNLV MPLRASNFHYHELKHIVFVGSIEYLKREWETLHN
 FPKVSILPGTPLSRADLRAVNINL CDMCVILSANQNNIDDTSLQDKECILASLNKSMQFDDSIGVLQAN
 SQGFTPPGMDRSSPDNSPVHGMLRQPSITTVGNIPITELAKPGKPLVSVNQEKNSGTHILMITELVND
 TNVQFLDQDDDDPDTELYLTQPFACGTAFVSVLDSLMSATYFNDNILTIRTLLVTGGATPELEALIAE
 ENALRGGYSTPQTLANRDRCRVAQLALLDGPFA DLGDGGCYGDLFCALKTYNMLCFGIYRLRDAHLSTP
 SQCTKRYVITNPPYEFELVPTDLIFCLMQFDHNAGQSRASLSHSSSSQSSSKSSSVHSIPSTANRQNR
 PKSRESRDKQKYVQEERL

SGPTRRRLE - GFP Tag - V

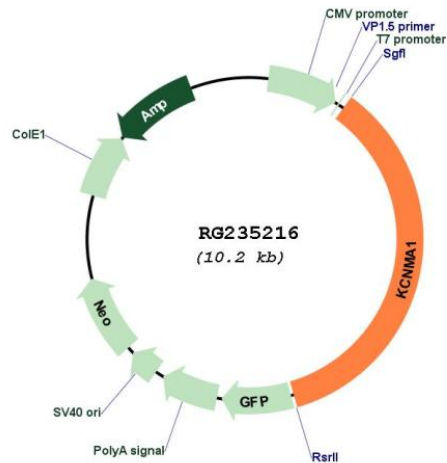
Restriction Sites: SgfI-RsrII

Cloning Scheme:

Cloning sites used for ORF Shutting:



Plasmid Map:



ACCN: NM_001271519

ORF Size: 3624 bp

OTI Disclaimer: The molecular sequence of this clone aligns with the gene accession number as a point of reference only. However, individual transcript sequences of the same gene can differ through naturally occurring variations (e.g. polymorphisms), each with its own valid existence. This clone is substantially in agreement with the reference, but a complete review of all prevailing variants is recommended prior to use. [More info](#)

OTI Annotation: This clone was engineered to express the complete ORF with an expression tag. Expression varies depending on the nature of the gene.

Components: The ORF clone is ion-exchange column purified and shipped in a 2D barcoded Matrix tube containing 10ug of transfection-ready, dried plasmid DNA (reconstitute with 100 ul of water).

Reconstitution Method:

1. Centrifuge at 5,000xg for 5min.
2. Carefully open the tube and add 100ul of sterile water to dissolve the DNA.
3. Close the tube and incubate for 10 minutes at room temperature.
4. Briefly vortex the tube and then do a quick spin (less than 5000xg) to concentrate the liquid at the bottom.
5. Store the suspended plasmid at -20°C. The DNA is stable for at least one year from date of shipping when stored at -20°C.

RefSeq: [NM_001271519.2](#)

RefSeq Size: 6209 bp

RefSeq ORF: 3627 bp

Locus ID: 3778

Cytogenetics: 10q22.3

Protein Families: Druggable Genome, Ion Channels: Potassium, Transmembrane

Protein Pathways: Vascular smooth muscle contraction

Gene Summary: MaxiK channels are large conductance, voltage and calcium-sensitive potassium channels which are fundamental to the control of smooth muscle tone and neuronal excitability. MaxiK channels can be formed by 2 subunits: the pore-forming alpha subunit, which is the product of this gene, and the modulatory beta subunit. Intracellular calcium regulates the physical association between the alpha and beta subunits. Alternatively spliced transcript variants encoding different isoforms have been identified. [provided by RefSeq, Jul 2008]