

Product datasheet for **RG235208**

DIAPH3 (NM_001258366) Human Tagged ORF Clone

Product data:

| | |
|---------------------------|--|
| Product Type: | Expression Plasmids |
| Product Name: | DIAPH3 (NM_001258366) Human Tagged ORF Clone |
| Tag: | TurboGFP |
| Symbol: | DIAPH3 |
| Synonyms: | AN; AUNA1; DIA2; diap3; DRF3; mDia2; NSDAN |
| Mammalian Cell Selection: | Neomycin |
| Vector: | pCMV6-AC-GFP (PS100010) |
| E. coli Selection: | Ampicillin (100 ug/mL) |
| ORF Nucleotide Sequence: | >RG235208 representing NM_001258366 Red=Cloning site Blue=ORF Green=Tags(s) |

TTTTGTAATACGACTCACTATAGGGCGGCCGGAATTCGTCGACTGGATCCGGTACCGAGGAGATCTGCC
GCC**CGATCGCC**

ATGGAACGGCACCAGCCGCGGTGCACCACCCGGCCCAAGGCTCAGCCGCTGGGACTCCCTACCCTTCT
CAGCCTCTCTCCGCGGTGCCGGAAAGCAAGATGCCGCGCAGGAAGGGCCCCAACACCCTCCGCCGC
CAGTGGCCCCGAGGAGCCTGGGAGAAGCGCCCAAGTTCTGGACAAATTTGCCAGCATAAGAATTCCA
GGGAGCAAGAAAGAGAGACCTCCACTTCCAACCTGAAGACTGCATTTGCAAGCAGTGATTGCTCAGCAG
CACCTTTAGAGATGATGGAGAATTTCCAAAGCCACTGTCAGAGAATGAACCTTTAGAATTTTTGAAAA
AATGATGGAAGATATGAATTTAAATGAAGATAAAAAGGCCACCATTCGCGGAAAAGGACTTCAGTATCAAA
AAAGAAATGGTGTGATGAGTACATTAATACTGCTTCTAAGACAGGAAGTCTTAAGAGAAGCCGACAGATCT
CACCTCAGGAATTCATTCATGAGCTGAAAATGGGGTCTGCAGATGAGAGACTTGTACATGCCTGGAGTC
TCTCCGAGTGTCTTTGACCAGCAATCCTGTGAGTTGGGTGAAAAGCTTTGGACATGAAGGGCTTGGATTA
TTATTAGACATTTTGGAAAACTGATTAGTGGAAAAATCCAAGAAAAAGTTGTAAGAAAAATCAACATA
AAGTCATACAGTGTCTAAAAGCCCTGATGAATACGCAGTATGGCTTGGAAAGAATTATGAGTGAGGAGAG
GAGCCTTTCTTATTGGCCAAAGCCGTGGATCCCAGACACCCCAATATGATGACAGATGTGGTTAAACTT
CTCTCTGCGGTATGCATTTGAGGGAAGAAAGCATCCTTGAAGAAGTTTTAGAAGCTTTAACTTCAGCTG
GTGAAGAAAAAAAATTGACAGATTTTTTTGTATTGTGGAAGGCCTCCGGCACAATTCAGTTCAACTGCA
AGTAGCTTGTATGCAGCTCATCAATGCCCTGGTTACATCTCCTGATGATTTGGATTTTCAGCTTACATC
AGAAATGAATTTATGCGTTGTGGATTGAAAGAGATATTGCCAAATTTAAAATGCATTAAGAATGATGGCC
TGGATATCCAACCTAAAGTCTTTGATGAGCATAAAGAAGAAGATTTGTTGAGTTATCCCATCGCCTTGA
AGATATTAGAGCTGAACCTGATGAAGCATATGATGTTTACAACATGGTGTGGAGCACAGTTAAAGAACT
AGAGCAGAGGGATATTTTATTCTATTCTTCAGCATCTTTGCTGATTCGAAATGATTATTTTATAAGGC
AACATACTTCAAATTAATTGATGAGTGTATCCAGATTGATTGCATAGAGATGGAATGGATCCAGA
CTTCACATATCGAAAAAGACTAGATTTAGATTTAACCCAGTTTGTAGACATTTGCATAGATCAAGCAAAA



[View online >](#)

CTAGAAGAGTTTGAAGAGAAAGCATCAGAACTTTACAAGAAATTTGAAAAAGAGTTTACCGACCACCAAG
AAACTCAGGCTGAATTGCAGAAAAAGAGGCAAAGATTAATGAGCTTCAAGCAGAGCTACAAGCTTTTAA
GTCTCAGTTTGGTGCCTTGCCAGCTGATTGTAATATTCCTTTGCCTCCCTCTAAAGAAGGTGGAAGTGGC
CACTCAGCACTTCTCCTCCGCCTCCACTGCCTTCTGGTGGAGGGGTGCCGCCTCCACCTCCTCCCCAC
CACCTCCTCCACTCCAGGAATGCGGATGCCATTCACTGGTCTGTGCCTCCACCACCTCCCCTGGGATT
CCTTGGAGGACAAAATTCCTCCTCTACCAATCCTGCCATTTGGGTTGAAACCAAGAAAGAATTTAAA
CCTGAAATCAGCATGAGAAGATTGAATTTGGTTAAAGATCAGACCTCATGAAATGACTGAAACTGTTTCT
GGATAAAAGTAAATGAAAATAAGTATGAAAACGTGGATTTGCTTTGTAACCTTGAGAATACATTTTGTG
CCAACAAAAGAGAGAAGAGAAGAGGAAGATATTGAAGAGAAGAAATCGATTAAAGAAAAAATTAAGAA
CTTAAGTTTTAGATTCTAAAATGCCAGAACCTTTCAATCTTCTGAGCTCTTTTCGGGTGCCATATG
AGGAAATCAGAATGATGATATTGGAAGTAGATGAAACACGGTTGGCAGAGTCTATGATTCAGAACTTAAT
AAAGCATCTTCTGATCAAGAGCAATTAATTCATTGTCTCAGTCAAGAGTGAATATAGCAACTTATGT
GAACCTGAGCAGTTTGTGGTTGTGATGAGCAATGTGAAGAGACTACGGCCACGGCTCAGTGTCTCTCT
TTAAGCTTCAGTTTGAAGAGCAGGTGAACAACATCAAACCTGACATCATGGCTGCAGTACTGCCTGCCA
AGAGATAAAGAAGAGCAAAAGCTTTAGCAAGTTGCTGGAACCTTGATTGCTAATGGGAACTACATGAAT
GCTGGCTCCCGGAATGCTCAAACCTTCGGATTTAACCTTAGCTCTCTGTAAACTAAAGGACACAAAAT
CAGCAGATCAGAAAACAACGCTACTTCATTTCTGGTAGAAATATGTGAAGAGAAGTACCCTGATATACT
GAATTTTGTGGATGATTTGGAACCTTTAGACAAAGCTAGTAAAGTCTCTGTAGAAACGCTGGAAAAGAA
TTGAGGCAGATGGGAAGGCAGCTTCAACAGCTTGAGAAGGAATTGGAAACCTTTCCCTCCTGAGGACT
TGCATGACAAGTTTGTGACAAAGATGTCCAGATTTGTTATCAGTGCAAAAGAACAATATGAGACACTTTC
GAAGTTACACGAAAACATGGAAGTTATACCAGAGTATAATAGGATACTATGCCATTGATGTGAAGAAG
GTGTCTGTGGAAGACTTCTTACTGACCTGAATAACTTCAGAACCACATTCATGCAAGCAATAAAGGAGA
ATATCAAAAAAGAGAAGCAGAGGAAAAAGAAAAACGTGTCAGAATAGCTAAAGAATTAGCAGAGCGAGA
AAGACTCGAACGCCAACAAAAGAAAAAGCGTTTATTAGAAATGAAGACTGAGGGTGTGAGACAGGAGTG
ATGGATAATCTGCTGGAGCCTTGACAGTCCGGGCTGCCTTCCGCGACAGAAAGAAAAAGGACACCGATGC
CAAAAGATGTTCCGCAGAGTCTCAGTCCAATGTCTCAGAGGCCTGTTCTGAAAAGTTGTAACCATGAAAA
TCAGAAAGTGCAGTTGACAGAAGGGTCACGTTCACTACAATATCAATTGCAACTCAACAAGGACTCCA
GTCGCCAAGGAGCTTAATTATAATCTAGACTCATACTGCTACTGGGAGGATCAAGGCAGCTGAGAAGA
AGGAAGCGTGAATGTAGAAAGCAACAGAAAAAGGAAACGGAACCTTCTGGCTCTTTTCTAAAAATGA
ATCAGTTCGGAAGTTGAAGCCCTGCTGGCAAGATTACGAGCTTTA

ACGCGTACGCGGCCGCTCGAG - GFP Tag - GTTTAA

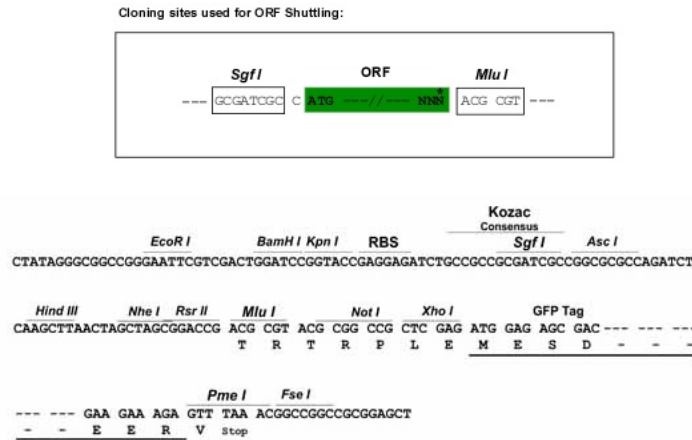
Protein Sequence: >RG235208 representing NM_001258366
 Red=Cloning site Green=Tags(s)

```

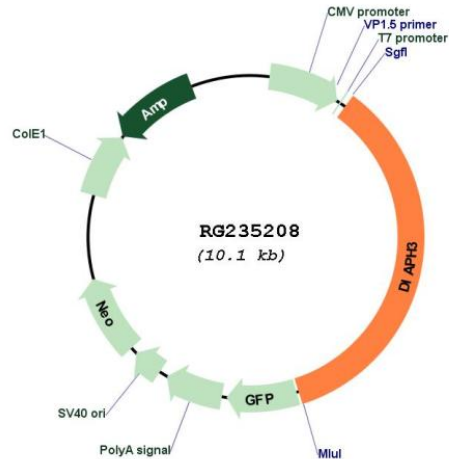
MERHQPRLHHPAQGSAAGTPYPSSASLRGCRESKMPRRKGPQHPPPPSGPEEPGEKRPKFLDKFASIRIP
GSKKERPPLPNLKTAFASDDCSAAPLEMENFPKPLSENELLELFKEMMEDMNLNEDKKAPLREKDFS IK
KEMVMQYINTASKTGLKRSRQISPOQEF IHELMGMSADERLVTCLESLRVSLT SNPVSWEV SFGHEGLGL
LLDILEKLI SGKIQEKVVKKNQHKVIQCLKALMNTQYGLERIMSEERSLSLLAKAVDPRHPNMMDVVKL
LSAVCIVGEESILEEVLEALTSAGEEKKIDRFFCIVEGLRHNSVQLQVACMQLINALVTSRDDDFRLHI
RNEFMRCGLKEILPNLKCIKNDGLDIQLKVFDEHKEEDLFELSHRLEDIRAELDEAYDVYNMVWSTVKET
RAEGYFISILQHLLLRNDYFIRQQYFKLIDECVSQIVLHRDGMDFDFTYRKRDLDLTQFVDICIDQAK
LEEFEEKASELYKKFEKFTDHQETQAE LQKKEAKINELQAE LQAFKSQFGALPADCNIPLPPSKEGGTG
HSALPPPPLPSGGGVPPPPPPPPPPPLPGMRMPFSGPVPPPPPLGFLGGQNSPPLIPFGLPKKKEFK
PEISMRRNLWLIKIRPHEMTECNFWIKV NENKYENVDLLCKLENT FCCQKERREEEIEEKKSIKKKIKE
LKFLDSKIAQNL SIFLSSFRVPYEEIRMMILEVDETR LAESMIQNL IKHLPDQEQNLNSL S QFKSEYSNLC
EPEQFVVVMSNVKRLRPRLSAILFKLQFEEQVNNIKPDIMAVSTACEEIKKSKSF SKLLELVLLMGNYMN
AGSRNAQTFGFNLSLCKLKDTKSADQKTLLHFLVEICEEKYPDILNFVDDLEPLDKASKVSVETLEKN
LRQMGRQLQQLEKELETFPPPEDLHDKFVTKMSRFVISAKEQYETLSKLHENMEKLYQSIIGYYAIDVKK
VSVEDFLD LNNFR TTFMQAIKENIKKREAEKEKRVRIAKELAERERLERQQKKRLL EMKTEGDETV
MDNLLEALQSGAAFRDRKRTPMPKDVQRQLSPMSQRPVLKVCNHENQKVQLTEGSRSHYINCNSTRTP
VAKELNYNLDTHSTGRIKAAEKKEACNVESNRKKETELLGFSKNE SVPEVEALLARLAL
    
```

TRTRPLE - GFP Tag - V

Restriction Sites: SgfI-MluI
Cloning Scheme:



Plasmid Map:



ACCN: NM_001258366

ORF Size: 3546 bp

OTI Disclaimer: The molecular sequence of this clone aligns with the gene accession number as a point of reference only. However, individual transcript sequences of the same gene can differ through naturally occurring variations (e.g. polymorphisms), each with its own valid existence. This clone is substantially in agreement with the reference, but a complete review of all prevailing variants is recommended prior to use. [More info](#)

OTI Annotation: This clone was engineered to express the complete ORF with an expression tag. Expression varies depending on the nature of the gene.

Components: The ORF clone is ion-exchange column purified and shipped in a 2D barcoded Matrix tube containing 10ug of transfection-ready, dried plasmid DNA (reconstitute with 100 ul of water).

Reconstitution Method:

1. Centrifuge at 5,000xg for 5min.
2. Carefully open the tube and add 100ul of sterile water to dissolve the DNA.
3. Close the tube and incubate for 10 minutes at room temperature.
4. Briefly vortex the tube and then do a quick spin (less than 5000xg) to concentrate the liquid at the bottom.
5. Store the suspended plasmid at -20°C. The DNA is stable for at least one year from date of shipping when stored at -20°C.

RefSeq: [NM_001258366.2](#)

RefSeq Size: 4779 bp

RefSeq ORF: 3549 bp

Locus ID: 81624

UniProt ID: [Q9NSV4](#)

Cytogenetics: 13q21.2

Protein Pathways: Regulation of actin cytoskeleton

Gene Summary: This gene encodes a member of the diaphanous subfamily of the formin family. Members of this family are involved in actin remodeling and regulate cell movement and adhesion. Mutations in this gene are associated with autosomal dominant auditory neuropathy 1. Multiple transcript variants encoding different isoforms have been found for this gene. [provided by RefSeq, Apr 2012]