

Product datasheet for **RG235196**

Liprin alpha 2 (PPFIA2) (NM_001220477) Human Tagged ORF Clone

Product data:

Product Type:	Expression Plasmids
Product Name:	Liprin alpha 2 (PPFIA2) (NM_001220477) Human Tagged ORF Clone
Tag:	TurboGFP
Symbol:	PPFIA2
Mammalian Cell Selection:	Neomycin
Vector:	pCMV6-AC-GFP (PS100010)
E. coli Selection:	Ampicillin (100 ug/mL)
ORF Nucleotide Sequence:	>RG235196 representing NM_001220477 Red=Cloning site Blue=ORF Green=Tags(s)

TTTTGTAATACGACTCACTATAGGGCGGCCGGGAATTCGTCGACTGGATCCGGTACCGAGGAGATCTGCC
GCC**CGATCGCC**

ATGATTTTCTCGGATATGAACACCGTTTCTGGCTCCCCTAAAGTGCATCCTCCTAATGGGACCCGGTTTT
ACACTTTTCAAGAATTTGCTGCACTGACAAAAGAATTAATGCCTGCAGGGAACAACCTTCTAGAAAAAGGA
AGAAGAAATCTCTGAACCTAAAGCTGAAAGAAACAACAAGACTATTACTGGAGCATTGGAGTGCCTT
GTGTCACGACATGAAAGATCACTAAGAATGACGGTGGTAAAACGGCAAGCCAGTCTCCCTCAGGAGTAT
CCAGTGAAGTTGAAGTTCTCAAGCAGTAAATCTTTGTTTGGACACCACAAGGCCTGGATGAAAAGGT
AAGGGAGCGACTGAGGGTTCTTTAGAAAGAGTCTCTGCACTGGAAGAAGAACTAGCTGCTGCTAATCAG
GAGATTGTTGCCTTGCCTGAACAAAATGTTTCATATACAAAAGAAAAATGGCATCAAGCGAGGGATCCACAG
AGTCAGAACATCTTGAAGGGATGGAACCTGGACAGAAAGTCCATGAGAAGCGTTTGTCCAATGGTCTAT
AGACTCAACCGATGAAACTAGTCAAATAGTTGAACTACAAGAATTGCTTAAAAGCAAACCTATGAAATG
GCCCAGATGAAAGAACGTTTAGCAGCCCTTTCTCCCGAGTGGGAGAGGTGGAACAGGAAGCAGAGACAG
CAAGAAAGGATCTCATAAAACAGAAGAAATGAACACCAAGTATCAAAGGGACATTAGGGAGGCCATGGC
ACAAAAGGAAGATATGGAAGAAAGAAATACAACCCTTAAAAGCGTTACCTCAGTGCTCAGAGAGAATCT
ACCTCCATACATGACATGAATGATAAATAGAAAATGAGTTAGCAAATAAAGAAGCTATCCTGCGGCAGA
TGGAAGAGAAAAACAGACAGTTACAAGAAGCTTTGAGCTAGCTGAACAAAAGTTGCAGCAGACCATGAG
AAAGGCTGAAACCTTGCCTGAAGTAGAGGCTGAACTGGCTCAGAGAATTGCAGCCCTAACCAAGGCTGAA
GAGAGACATGAAATATTGAAGAACGTATGAGACATTTAGAGGGTCAACTGAAGAGAAGAAATCAAGAAC
TTCAAAGAGCTAGGCAAAGAGAGAAAAATGAATGAGGAGCATAACAAGAGATTATCGGATACGGTTGATAG
ACTTCTGACTGAATCCAATGAACGCCTACAACCTCACTTAAAGGAAAGAAATGGCTGCTCTAGAAGAAAA
AATGTTTTAATCAAGAATCAGAACTTTCAGAAAAGAACTTTGAAGAATCTTTACATGATAAGGAAAGAT
TAGCAGAAGAAATGAAAAGCTGAGATCTGAACCTTGACCAATTGAAAATGAGAACTGGCTCTTTAATTGA
ACCCACAATACCAAGAACTCATCTAGACACCTCAGCTGAGTTGCGGTACTCAGTGGGATCCCTAGTGGAC
AGCCAGTCTGATTACAGAACAACCTAAAGTAATAAGAAGACCAAGGAGAGGCCGCATGGGTGTGCGAAGAG
ATGAGCCAAAGGTGAAATCTCTTGGGGATCACGAGTGAATAGAACTCAACAGATTGGAGTACTAAGCAG



[View online »](#)

CCACCCTTTTGAAGTGACACTGAAATGTCTGATATTGATGATGATGACAGAGAAACAATTTTGTAGCTCA
 ATGGATCTTCTCTCCAAGTGGTCATTCCGATGCCAGACGCTAGCCATGATGCTTCAGGAACAATTGG
 ATGCCATCAACAAAGAAATCAGGCTAATTCAGGAAGAAAAGAATCTACAGAGTTGCGTGTGAGAAAT
 TGAATAAGAGTGGCTAGTGTGAGCCTCGAAGGCTGAATTTGGCAAGGGTCCACCCAGGTACCTCCATT
 ACTGCCTCTGTTACAGCTTCATCGCTGGCCAGTTCATCTCCCCCAGTGGACACTCAACTCCAAAGCTCA
 CCCCTCGAAGCCCTGCCAGGAAATGGATCGGATGGGAGTCATGACACTGCCAAGTATGCTGAGGAAACA
 TCGGAGAAAGATTGCAGTTGTGGAAGAAGATGGTTCGAGAGGACAAAGCAACAATTAATGTGAAACTTCT
 CCTCCTCTACCCCTAGAGCCCTCAGAATGACTCACACTCTCCCTTCTTCTACCACAATGATGCTCGAA
 GTAGTTTATCTGTCTCTCTTGTAGCCAGAAAGCCTCGGGCTTGGTAGTGCCAAACAGCAGCCAAAGACTCT
 TCACAAAGCCCCAAGAAGAAAGGAATCAAGTCTTCAATAGGACGTTTGTGGTAAAAAGAAAAAGCT
 CGACTTGGGCAGCTCCGAGGCTTATGGAGACTGAAGCTGCAGCTCAGGAGTCCCTGGGGTTAGGCAAAC
 TCGGAACCAAGCTGAGAAGGATCGAAGACTAAAGAAAAAGCATGAACTTCTGAAGAAGCTCGGAGAAA
 GGGATTACCTTTGCCAGTGGGATGGCCAACTGTGGTCGCATGGCTAGAGCTTGGTTGGGAATGCCT
 GCGTGGTACGTGGCAGCCTGCCAGCCAACTGAAGAGTGGTCCATCATGTCTGCTTTATCTGACACTG
 AGATCCAGAGAGAAATTGGAATCAGCAATCCACTGCATCGCTTAAACTTCGATTAGCAATCCAGGAGAT
 GGTTCCTCAACAAGTCCTCAGCTCCTCAACATCTCGAACTAAAGAATCTGAGGAAGGAGCTGGGCC
 CAGACCCTGGCTTATGGAGATATGAATCATGAGTGGATTGGAAATGAATGGCTTCCAGCTTGGGGTTAC
 CTCAGTACAGAAGTTACTTTATGGAATGCTTGGTAGATGCAAGAATGTTAGATCACCTAACAAAAAAGA
 TCTCCGTGTCCATTTAAAAATGGTGGATAGTTCCATCGAACAAGTTTACAATAAGGAATATGTGCTTA
 AAGAGGTTGAATTATGACAGAAAAGAACTAGAAAAGAACGCGGAAGCAAGCAACATGAAATAAAGACG
 TGTTGGTGTGGAGCAATGACCGAGTTATTCGCTGGATACAAGCAATTGGACTTCGAGAATATGCAATAA
 TATACTTGAGAGCGGTGCATGGCTCACTTATAGCCCTGGATGAAAACCTTACTACAGCAGCTTAGCT
 TTATTATTACAGATTCCAACACAGAACCCAGGCAAGGAGATCTTGAAGAGAAATACAATAACCTCT
 TGGCCCTGGGAACTGAAAGGCGACTGGATGAAAAGTATGACAAGAAGTTCAGACGTGGATCAACCTGGAG
 AAGGCAGTTTCTCCTCGTGAAGTACATGGAATCAGCATGATGCCTGGTCCCTCAGAAACATTACCAGCT
 GGATTTAGGTTAACCACAACCTCTGGGCAGTCAAGAAAAATGACAACAGATGTTGCTTCATCAAGACTGC
 AGAGGTTAGACAACCTCACTGTTGCGACATACTCATGT

ACGCGTACGCGGCCGCTCGAG – GFP Tag – GTTTAA

Protein Sequence:

>RG235196 representing NM_001220477

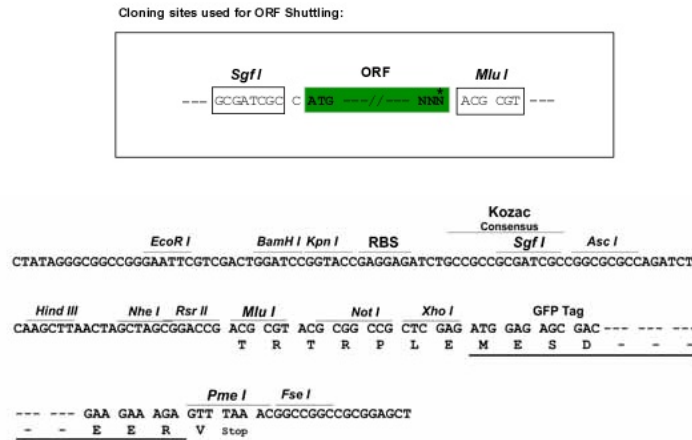
Red=Cloning site Green=Tags(s)

MIFSDMNTVSGSPKVHPPNGTRFYTFQEF AALTKELNACREQLLEKEEEISELKAERNNTRLLLEHLECL
 VSRHERSLRMTVVKRQAQSPSGVSSEVEVLKALKSLFEHHKALDEKVRERLRVSLERVSALLEELAAANQ
 EIVALREQNVHIQRKMASSEGSTESEHLEGMPEGQKVHEKRLSNGSIDSTDETSQIVELQELLEKQNYEM
 AQMKERLAALSSRVGEVEQEAETARKDLIKTEEMNTKYQRDIREAMAQKEDMEERITTTLEKRYLSAQRES
 TSIHDMNDKLENELANKEAILRQMEENRQLQERLELAEQKLQQTMRKAETLPEVEAELAQRIAALTKAE
 ERHGNIEERMRLHEGLQLEEKQELQRARQREKMNEEHNKRLSDTVDRLLTESNERLQLHLKERMAALEEK
 NVLIQSESETFRKNLEESLHDKERLAEEIEKLRSEL DQLKMRTGSLIEPTIPRTHLDTSAELRYSVGLVD
 SQSDYRRTTKVIRRRGRMGVRRDEPKVSLGDHEWNRTQQIGVLSHPFESDTEMSDIDDDRETIFSS
 MDLLSPSGHSDAQTAMMLQEQLDAINKEIRLIQEEKESTELRAEEIENRVASVSLEGLNLARVHPGTSI
 TASVTASSLASSPPSGHSTPKLTPRSPAREMDRMGMVMTLPSDLRKHRRKIAVVEEDGREDKATIKCETS
 PPPTPRALRMTHTLPSSYHNDARSSLVSLPEPESLGLGSANSSQDSLHKAPKKKGIKSSIGRLF GKKEKA
 RLGQLRGFMETEAAAQESLGLGKLTQAEKDRRLKKKHLEELARRKGLPFAQWDGPTVVAWLELWLGMP
 AWYVAACRANVKSGAIMSALSDTEIQREIGISNPLHRLKRLAIQEMVSLTSPSAPPTSRKESSEEGSWA
 QTLAYGDMNHEWIGNEWLP SLGLPQYRSYFMECLVDARMLDHLTKKDLRVHLKMVDSFHRTSLQYGMCL
 KRLNYDRKELERRREASQHEIKDVLVWSNDRVIRWIQAIIGLREYANNILESGVHGSIALDENFDYSSLA
 LLLQIPTQNTQARQILEREYNNLLALGTERRLDESDDKNFRRGSTWRRQFPPREVHGISMMPGSSETLPA
 GFRLTTTSGQSRKMTTDVASSRLQRLDNSTVRYSC

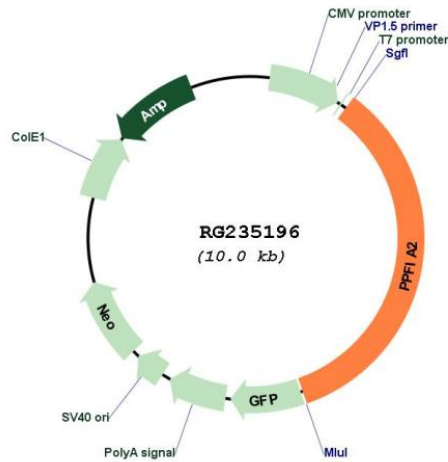
TRTRPLE – GFP Tag – V

Restriction Sites: SgfI-MluI

Cloning Scheme:



Plasmid Map:



ACCN: NM_001220477

ORF Size: 3468 bp

OTI Disclaimer: The molecular sequence of this clone aligns with the gene accession number as a point of reference only. However, individual transcript sequences of the same gene can differ through naturally occurring variations (e.g. polymorphisms), each with its own valid existence. This clone is substantially in agreement with the reference, but a complete review of all prevailing variants is recommended prior to use. [More info](#)

OTI Annotation: This clone was engineered to express the complete ORF with an expression tag. Expression varies depending on the nature of the gene.

Components:	The ORF clone is ion-exchange column purified and shipped in a 2D barcoded Matrix tube containing 10ug of transfection-ready, dried plasmid DNA (reconstitute with 100 ul of water).
Reconstitution Method:	<ol style="list-style-type: none">1. Centrifuge at 5,000xg for 5min.2. Carefully open the tube and add 100ul of sterile water to dissolve the DNA.3. Close the tube and incubate for 10 minutes at room temperature.4. Briefly vortex the tube and then do a quick spin (less than 5000xg) to concentrate the liquid at the bottom.5. Store the suspended plasmid at -20°C. The DNA is stable for at least one year from date of shipping when stored at -20°C.
RefSeq:	<u>NM_001220477.2</u> , <u>NP_001207406.1</u>
RefSeq Size:	5529 bp
RefSeq ORF:	3471 bp
Locus ID:	8499
UniProt ID:	<u>O75334</u>
Cytogenetics:	12q21.31
Protein Families:	Druggable Genome
Gene Summary:	The protein encoded by this gene is a member of the LAR protein-tyrosine phosphatase-interacting protein (liprin) family. Liprins interact with members of LAR family of transmembrane protein tyrosine phosphatases, which are known to be important for axon guidance and mammary gland development. It has been proposed that liprins are multivalent proteins that form complex structures and act as scaffolds for the recruitment and anchoring of LAR family of tyrosine phosphatases. This protein has been shown to bind the calcium/calmodulin-dependent serine protein kinase (MAGUK family) protein (also known as CASK) and proposed to regulate higher-order brain functions in mammals. Alternative splicing results in multiple transcript variants. [provided by RefSeq, Sep 2013]