

Product datasheet for **RG235195**

Attractin (ATRN) (NM_001207047) Human Tagged ORF Clone

Product data:

Product Type:	Expression Plasmids
Product Name:	Attractin (ATRN) (NM_001207047) Human Tagged ORF Clone
Tag:	TurboGFP
Symbol:	ATRN
Synonyms:	DPPT-L; MGCA
Mammalian Cell Selection:	Neomycin
Vector:	pCMV6-AC-GFP (PS100010)
E. coli Selection:	Ampicillin (100 ug/mL)
ORF Nucleotide Sequence:	>RG235195 representing NM_001207047 Red=Cloning site Blue=ORF Green=Tags(s)

TTTTGTAATACGACTCACTATAGGGCGGCCGGAATTCGTCGACTGGATCCGGTACCGAGGAGATCTGCC
GCC**CGATCGCC**

ATGTGTTTCGCGGGGCGCCGTCTCAGCCCCGGGAAGATGGTGGCTGCAGCGCGGCAACTGAGACTAACTG
GATCTTCTGGGTTTGTGACAGATGGACCTGAAATTATAAATACAAAACGAAGTGCACGTGGCTCATTGA
AGGACAGCCAAAATAGAATAATGAGACTTCGTTTCAATCATTGCTACAGAGTGTAGTTGGGACCATTTA
TATGTTTATGATGGGACTCAATTTATGCACCGCTAGTTGCTGCATTTAGTGGCCTCATTGTTCTGAGA
GAGATGGCAATGAGACTGTCCCTGAGGTTGTTGCCACATCAGGTTATGCCTTGCTGCATTTTTTTAGTGA
TGCTGCTTATAATTTGACTGGATTTAATATTACTTACAGTTTTGATATGTGTCCAAATAACTGCTCAGGC
CGAGGAGAGTGTAAAGATCAGTAATAGCAGCGATACTGTTGAATGTGAATGTTCTGAAAACGGAAAGGTG
AAGCATGTGACATTCTCACTGTACAGACAACGTGGTTTTCTCATCGAGGCATCTGCAATTCAGTGA
TGTGAGAGGATGCTCCTGCTTCTCAGACTGGCAGGGTCTGGATGTTGAGTTCTGTACCAGTAACCG
TCATTTGGACTCGAGAGGAATATTCTAACTTAAAGCTCCCCAGAGCATCTCATAAAGCTGTGGTCAATG
GAAACATTATGTGGGTTGTTGGAGGATATGTTCAACCACTCAGATTATAACATGGTTCTAGCGTATGA
CCTTGCTTCTAGGGAGTGGCTTCCACTAAACCGTTCTGTGAACAATGTGGTTGTTAGATATGGTCATTCT
TTGGCATTATAAAGGATAAAAATTTACATGTATGGAGGAAAAATGATTCAACTGGGAATGTGACCAATG
AGTTGAGAGTTTTTACATTATAATGAGTCATGGGTGTTGACCCCTAAGGCAAAGGAGCAGTATGC
AGTGGTTGGGCACTCTGCACACATTGTTACACTGAAGAATGGCCGAGTGGTCATGCTGGTCATCTTGGT
CACTGCCCTCTCTATGGATATAAAGCAATGTGCAGGAATATGATTTGGATAAGAACACATGGAGTATAT
TACACACCCAGGGTGCCCTTGTGCAAGGGGTTACGGCCATAGCAGTGTTCAGACCATAGGACCAGGGC
CCTATACGTTTATGGTGGCTACAAGGCTTTTCAAGTCCCAATAAGTACCGGCTTGCAGATGATCTCTACCGA
TATGATGTGGATACCCAGATGTGGACATTCTTAAGGACAGCCGATTTTTCCGTTACTTGCACACAGCTG
TGATAGTGAAGTGAACCATGCTGGTGTGGAGGAAAACACACAATGACACATCTATGAGCCATGGCGC
CAATGCTTCTTTCAGATTTTCATGGCCTATGACATTGCCTGTGACCGCTGGTCAGTGTCTCCAGACCT



[View online >](#)

GATCTCCACCATGATGTCAACAGATTTGGCCATTCAGCAGTCTTACACAACAGCACCATGTATGTGTTCG
GTGGTTTCAATAGTCTCCTCCTCAGCGACATCCTGGTATTACCTCGAACAGTGTGATGCGCATCGGAG
TGAAGCCGCTTGTAGCAGCAGGACCTGGTATTCCGGTGTGTGGAACACAGGGTCGTCTCAGTGTATC
TCGTGGGCGCTGGCAACTGATGAACAAGAAGAAAAGTTAAAATCAGAATGTTTTTCCAAAAGAACTTTG
ACCATGACAGATGTGACCAGCACACAGATTGTTACAGTGCACAGCCAACACCAATGACTGCCACTGGTG
CAATGACCATTGTGTCCCAGGAACCACAGCTGCTCAGAAGGCCAGATCTCCATTTTTAGGTATGAGAAT
TGCCCCAAGGATAACCCCATGTACTACTGTAACAAGAAGACCAGCTGCAGGAGCTGTGCCCTGGACCAGA
ACTGCCAGTGGGAGCCCCGGAATCAGGAGTGCATTGCCCTGCCCGAAAATATCTGTGGCATTGGCTGGCA
TTTGGTTGAAAACATGTTTAAAAATTACTACTGCCAAGGAGAATTATGACAATGCTAAAATTGTTCTGT
AGGAACCACAATGCCCTTTGGCTTCTCTTACAACCCAGAAGAAGGTAGAATTTGCTTAAAGCAGCTGC
GAATAATGCAGTCATCTCAGAGCATGTCCAAGCTCACCTTAACCCCATGGGTCCGCTTCGGAAGATCAA
TGTGTCTACTGGTGTGGGAAGATATGTCCCATTTACAATAGTTTACTACAGTGGATGCCGTCTGAG
CCCAGTGTGCTGGATTCTGTGGAATTTATCAGAACCCAGTACTCGGGGACTGAAGGCTGCAACCTGCA
TCAACCCACTCAATGGTAGTGTCTGTGAAAGGCCCTGCAAACCACAGTGTAAAGCAGTGCCGGACACCATG
TGCCCTTGAGGACAGCATGTGGAGATTGCACCAGCGGCAGCTCTGAGTGCATGTGGTGCAGCAACATGAAG
CAGTGTGTGGACTCCAATGCCTACGTGGCTCCTCCCTTTTGGCCAGTGTATGGAATGGTATACGATGA
GCACCTGCCCCCTGAAAATTGTTCAAGGCTACTGTACCTGTAGTATTGCTTGGAGCAACCAGGCTGTGG
CTGGTGTACTGATCCCAGCAACTACTGGCAAAGGAAAATGCATAGAGGGTTCTATAAAGGACCAGTGAAG
ATGCCCTTCGCAAGCCCCTACAGGAAATTTCTATCCACAGCCCCTGCTCAATTCAGCATGTGTCTAGAGG
ACAGCAGATACAACTGGTCTTTTCATTCACTGTCCAGCTTGCCAATGCAACGGCCACAGTAAATGCATCAA
TCAGAGCATCTGTGAGAAGTGTGAGAACCTGACCACAGGCAAGCACTGCGAGACCTGCATATCTGGCTTC
TACGGTGTACCCACCAATGGAGGGAAATGTCAGCCATGCAAGTGAATGGGCACGCGTCTCTGTGCAACA
CCAACACGGGCAAGTGCTTCTGCACCACCAAGGGCGTCAAGGGGACGAGTGCCAGCTATGTGAGGTAGA
AAATCGATACCAAGGAAACCCTCTCAGAGGAACATGTTATTATACTCTTCTTATTGACTATCAGTTCACC
TTTAGTCTATCCCAGGAAGATGATCGCTATTACACAGCTATCAATTTTGTGGCTACTCTGACGAACAAA
ACAGGGATTTGGACATGTTCAATGCCTCCAAGAATTTCAACCTCAACATCACCTGGGCTGCCAGTTT
CTCAGCTGGAACCCAGGCTGGAGAAGAGATGCCTGTTGTTTCAAAAACCAACATTAAGGAGTACAAAGAT
AGTTTCTCTAATGAGAAGTTTGATTTTCGCAACCACCCAAATATCACTTTCTTTGTTTATGTCAGTAATT
TCACCTGGCCCATCAAAATTCAGGTGCAAACCTGAACAA

AGCGGACCGACGCGTACGCGGCCGCTCGAG - GFP Tag - GTTTAA

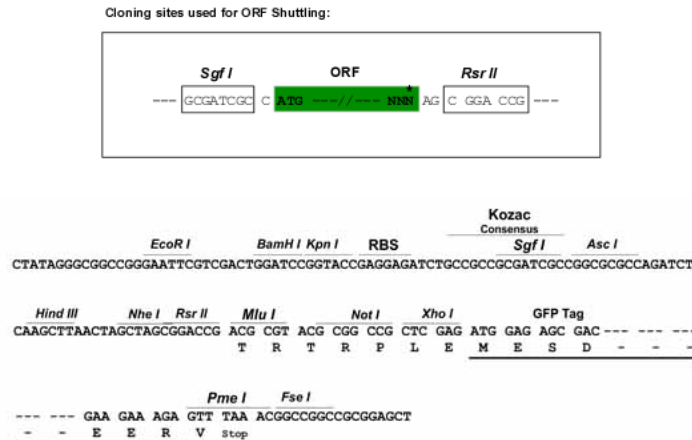
Protein Sequence: >RG235195 representing NM_001207047
 Red=Cloning site Green=Tags(s)

MCSRGAVSAPGRWWLQRRQLRLTGSSGFVTDGPGNYKYKTKCTWLIEGQPNRIMRLRFNHFATECSWDHL
 YVYDGDSDIYAPLVAAFSGLIVPERDGNETVPEVVATSGYALLHFFSDAAYNLTFGNITYSFDMPNCSG
 RGECKISNSSDTEVECESENWKEACDIPHCTDNCGFPHRGICNSSDVRGCSCFSDWQGGPVCVVPANQ
 SFWTREEYSNLKLPRAASHKAVVNGNIMVWVGGYMFNHSYDYNMVLAYDLASREWLPLNRSVNVVVRVYGH
 LALYKDKIYMYGGKIDSTGNVTNELRVFHIHNESWVLLTPKAKEQYAVVGHSAHIVTLKNGRVVMLVIFG
 HCLPLYGIYSNVQEYDLKNTWSILHTQGALVQGGYGHSSVYDHRTRALYVHGGYKAFSANKYRLADDLYR
 YDVTQMWTILKDSRFFRYLHTAVIVSGTMLVFGGNTNNDTSMHGAKCFSSDFMAYDIACDRWSVLP
 DLHHDVNRFGHSAVLHNSMYYVFGFNLSLLSDILVFTSEQDAHRSEAACLAAGPGIRCWNTGSSQCI
 SWALATDEQEEKLSECFSKRTLHDHRCQHTDCYSCTANTNDCHWCNDHCVPRNHSCSEQISIFRYEN
 CPKDNPMYYCNKKTSCRSCALDQNCQWEPRNQECIALPENICGIGWHLVGNCLKITTAKENYDNAKLC
 RNHNALLASLTTQKKVEFVLKQLRIMQSSQSMKLTLPWVGLRKINVSYWCWEDMSPFTNSLLQWMPSE
 PSDAGFCGILSEPSTRGLKAATCINPLNGSVCERPANHSAKQCRTPCALRTACGDCTSGSSECMWCSNMK
 QCVDSNAYVASFPFGQCMWYTMSTCPPENCSGYCTCSHCLEQPGCGWCTDPSNTGKGCIEGSYKGPVK
 MPSQAPTGNFYQPPLNSSMCLEDSRYNWSFIHCPACQCNHSHKINQSIKCEKCNLTTGKHCETCISGF
 YGDPTNGGKQPKCNHASL CNTNTGKCFCTTKGVKGDCEQLCEVENRYQGNPLRGTCYYTLLIDYQFT
 FSLSQEDDRYYTAINFVATPDEQNRDLDMFINASKNFNLITWAASF SAGTQAGEEMPVVSKTNIKEYKD
 SFSNEKFDNRNHPNITFFVYVSNFTWPIKIQVQTEQ

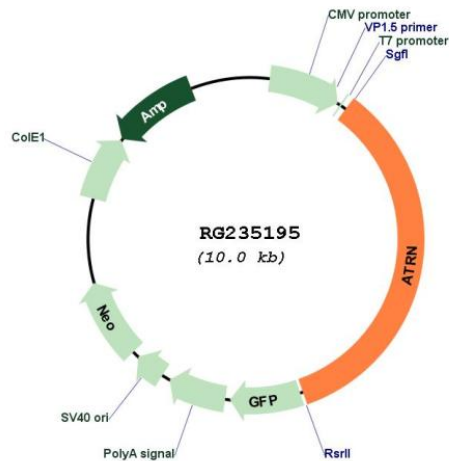
SGPTRRRLE - GFP Tag - V

Restriction Sites: SgfI-RsrII

Cloning Scheme:



Plasmid Map:



ACCN: NM_001207047

ORF Size: 3468 bp

OTI Disclaimer: The molecular sequence of this clone aligns with the gene accession number as a point of reference only. However, individual transcript sequences of the same gene can differ through naturally occurring variations (e.g. polymorphisms), each with its own valid existence. This clone is substantially in agreement with the reference, but a complete review of all prevailing variants is recommended prior to use. [More info](#)

OTI Annotation: This clone was engineered to express the complete ORF with an expression tag. Expression varies depending on the nature of the gene.

Components: The ORF clone is ion-exchange column purified and shipped in a 2D barcoded Matrix tube containing 10ug of transfection-ready, dried plasmid DNA (reconstitute with 100 ul of water).

Reconstitution Method:

1. Centrifuge at 5,000xg for 5min.
2. Carefully open the tube and add 100ul of sterile water to dissolve the DNA.
3. Close the tube and incubate for 10 minutes at room temperature.
4. Briefly vortex the tube and then do a quick spin (less than 5000xg) to concentrate the liquid at the bottom.
5. Store the suspended plasmid at -20°C. The DNA is stable for at least one year from date of shipping when stored at -20°C.

RefSeq: [NM_001207047.3](#)

RefSeq Size: 3584 bp

RefSeq ORF: 3471 bp

Locus ID: 8455

UniProt ID: [O75882](#)

Cytogenetics: 20p13

Protein Families: Druggable Genome, Secreted Protein, Transmembrane

Gene Summary: This gene encodes both membrane-bound and secreted protein isoforms. A membrane-bound isoform exhibits sequence similarity with the mouse mahogany protein, a receptor involved in controlling obesity. A secreted isoform is involved in the initial immune cell clustering during inflammatory responses that may regulate the chemotactic activity of chemokines. [provided by RefSeq, Apr 2016]