

Product datasheet for **RG235193**

ARHGAP20 (NM_001258417) Human Tagged ORF Clone

Product data:

Product Type:	Expression Plasmids
Product Name:	ARHGAP20 (NM_001258417) Human Tagged ORF Clone
Tag:	TurboGFP
Symbol:	ARHGAP20
Synonyms:	RARHOGAP
Mammalian Cell Selection:	Neomycin
Vector:	pCMV6-AC-GFP (PS100010)
E. coli Selection:	Ampicillin (100 ug/mL)
ORF Nucleotide Sequence:	>RG235193 representing NM_001258417 Red=Cloning site Blue=ORF Green=Tags(s)

TTTTGTAATACGACTCACTATAGGGCGGCCGGAATTCGTCGACTGGATCCGGTACCGAGGAGATCTGCC
GCC**CGATCGCC**

ATGAAACACTAGCAGAAAGGAGGAGGAGCGCTCCATCTCTTATCCTGGATAAAGCCCTACAAAAACGGC
CTACTACCAGGGACAGTCCTTCTGCTAGTGTGACACATGCACATTTCTGTCATCATTAGTGTGCTCCAA
TAGGACTCTGCTGATTGATGGCCGGCAGAACTCAAAGAGGCCCTCCAGAGGCAGGAGCGGCATCTTTTC
CTATTCATGATCTGTTTGTGGCCAAAATCAAATATAACAATAACTTTAAGATAAAAAATAAAATTA
AATTAAGTATGTGGACAGCAAGCTGTGTGGATGAAGTGGGAGAAGGCAACACCAATGCCATGAAATC
CTTTGTTTTGGGCTGGCCACAGTGAATTTGTGGCCACTTTTCAGTTCTCCAGAACAAAAGGACAAATGG
CTCTCTCTCCTTCAGAGATACATCAATCTAGAGAAAGAAAAGGACTACCCGAAGAGCATTCCCCTCAAAA
TCTTCGCCAAGGACATTGGGAATTGTGCCTACTCTAAAATAACAGTAATGAATTCAGATACAGCGAA
TGAAGTTATCAACATGTCATTACCAATGCATAGGGATAACTGGCTCTGAGAGAGATTACCAGTTGTGGGTC
AATTCGGCAAAGAAGAGGCTCCATACCCACTATTGGGCATGAATATCCATATGGAATTAATGAGCC
ATCTTCGAGACTCTGCACTCCTGACACCGGGATCAAAGGACTCTACCACCCCTTTCACCTCCAGGAGCC
CTTCCTTATGGAACAGCTCCCCGAGAGATGCAGTGCCAGTTCATCCTGAAGCCCAGCCGCTGGCTGCA
GCCGAGGTTCTAGCACTCACCTGGACAACCTGGCCCTCATCGCCAACATCACCTATGCCAGGACAGCTCTT
TGGAAATTTCTCTGCCAAATATTTGTGAGAATGACAATCTGCCAAACCTGTCTTGATATGCTTTTCTTT
CTTAATCAAAAAGGACCTCTCACAAAGGTATCTTCAGGCAATCAGCCAATGTGAAATCCTGCAGAGAAC
TAAAAGAGAAATGAATTCGGAGTCGAAGTACACCTAGACTGTGAATCTATTTTGTGATAGCATCTGT
CTTAAAGGATTTCTGCGAAATATTCCAGGAAGTATTTTTTTCATCAGATCTCTATGATCACTGGGTCTCT
GTAATGGATCAAGGAAATGATGAAGAGAAAATAAATACTGTTCAAAGGCTATTAGACCAGCTCCGAGAG
CCAATGTTGTTCTCCTAAGGTATCTTTTGGGGTGTACACAACATTGAGCAACATTCCTCATCCAATCA
GATGACTGCATTAATTTAGCTGTGTGTGCTCCAAGTATTCTTTGGCCTCCTGCTTCTCCAGCCCA



[View online »](#)

GAACTAGAAAACGAATTTACAAAAAGGTTTCCCTGCTTATACAATTTCTGATTGAGAATTGCCTTAGGA
TATTTGGAGAAGAAATCACTTCCCTCTTCAGAGAGGTTTCAGTGAGATGTGACACTAGAGAGAATGCCTC
AGATATTTCTTGCTTTCAACTGAATGACTCCTCTATGACAGCTTGAAAAATGAGCTAAATGAGGATGTT
GATGCACCATGCAGTGACTTGGTAAAGAACTTGGCCAGGGGAGCAGAAGCATGGACTCTGTCTTAACCC
TCAGTGACTATGATCTTGACCAGCCGAGGTGGAAGGCCTTTTAACCTAAGCGACTTTGACTTGGCCCA
TTCTAAAGATGAAGATGTTCAAATGAAACGGCCTCTTGAATCCAAGCCGGTGAACATTTTAGTGTACACA
AAGATCCCACTGCGGGATCATGCCAGGGCCCATCTGCCATGTGCACACCCAGCTACCTGTCCACAGCTG
CAGCAAAATGCTGCAAAAAGCCTGAGGCGACACCGCGTTGCTCAGAGCCAGCATCGACTATCTGGATTC
AAAGCTTTCCTACCTCAGGGAGTTTTATCAGAAAAAGCTACGCAAGTCCAGCTGTGATGCAATTTCTTCT
CAAAAAGATGAAGACTATCTGAAGCAGAAATCAACCCCTCCAGGAGGAAGGAAAGACATGTTTTAAACAGA
GTTTAGTCACAGGCACTGATGTCAGCAAGAAAAATGCCACTACTCAAACACTAAGAAGAAAAGCTTGTC
TGGTAGTGAAGGAAATCACGTGAACTTTTCCCTAAGTCTAAGCCAGTGGCCATTTCTGTGGCATTTAT
AGTCTATGTCTCACAGGATCATTCCAAGAACCAGCCCTTTGATGTGAATACATCTGGATACTCCCCAC
CACACACAGCAGATGCCCTCAAGGGTCCAAGGACACATCGGCGCTGCTCAGAGCCCAACATAGAAGACCA
GAACCGCAAGCTGACCTATCTCAGGGGAATTTATTCAAAGAAACAACATAAAACCAGCTGTGAAGCTGGT
CTCTTGATGGAGAGGAGGATTATCTCAAACGGCATAAGTCTTTGCAAAATGGAGGGGCAGAAGCTCATT
ATCAGAGTTTAGTCATGGGGATTGAGGTGGCAAGAGTAGTGCCACAAACCAAAACACTGAGAAGGTTTT
ACCCCAAGATTAACCTTTGCCAAGGACCAGCTATTCCAGCTTATCTCCCCAGGCACTTCCCATCC
GGCTCATCAGTAAGCTCCAAGACAGTGCTTTTTCTCAGATTTCTGAACACTCTGTGTTACACCCACTG
AGACTTCTCTCCAATAGATTGCACTTTTCAGGCTCAGAGAAAACGGGAAGACCTTTCTCCTGACTTTAG
CAATGCCAGCCATGTTTCCGGAATGCCCGTCCCTCATCAGGGCAGGCTTGACAGCCGCCAGCCTATACA
AAGAAGGACACCATGGAGTGGCATTACAAATGCATTCTGTAACCTTTCATCCAGCACATGGTTGAGAA
ATGGTGTGGCCAGTTTGAAAAACTGGTCCCTCAAAAAGAAAGCAAAGGCAGCCAGACCAGAGGAAGAGAA
AATAGCTTCTCCAAAAGACCCTTAGAGCCACCCACATGCTTCTGGTGTCCAGAAGCCAACACTACTG
CAAGAGGAACAAAAAGACTTGCCCTTAAGGGCAGCTGAAGGACTGTCCCCTGTGCAGTCAGCCAAAGGT
GTAGTTCTTCTCCCTTCCAGGACTCAGAGAGACTGTAGCTCTCCATTGAGCCTGGTGGAGAGCAGACT
TAAGCTGTGCATGAAGTCACATGAGGAAATAGAGCCTGGTAGTCAGAGCTCTTCTGGTCTCTGCCTTGG
GAAAGAGCCTCAGCCAGCTCTTGGACTCTAGAGGATGCGACCAGCCAGACTCAGGGCCTACAGTGGTCT
GCGACATTGAGGACAGGTATTTAACCAAGACATT

ACGCGTACGCGGCCGCTCGAG - GFP Tag - GTTTAA

Protein Sequence: >RG235193 representing NM_001258417
 Red=Cloning site Green=Tags(s)

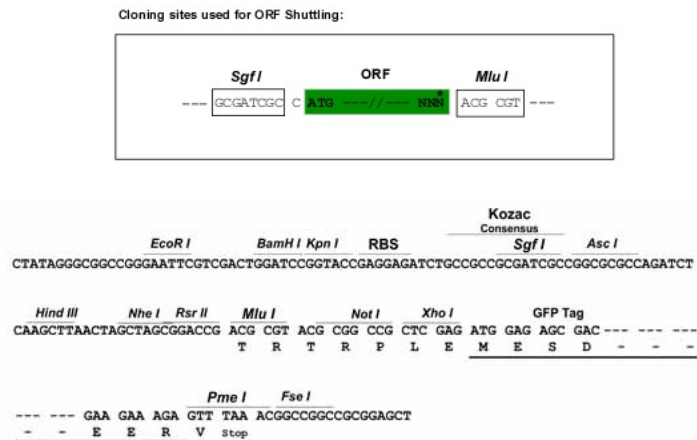
```

MKTLAERRRSAPSLILDKALQKRPTTRDPSASVDTCTFLSSLVCSNRTLLIDGRAELKRGLQRQERHLF
LFNDLFVVAIKIYNNFKIKNKIKLDMWTASCVDVEGEGNTAMKSFVLGWPTVNFVATFSSPEQKDKW
LSLLQRYINLEKEKDYPKSIPLKIFAKDIGNCAYSKTITVMNSDTANEVINMSLPLGITGSDYQLWV
NSGKEEAPYPLIGHEYPIYGIKMSHLRDSALLTPGSKDSTTPFNLQEPFLMEQLPREMQCQFILKPSRLAA
AQQLSDSGHKTFKRRRSIINWAFWRGSSTHLDNLPSSPTSPMPGQLFGISLPNICENDNLPKPVLDMLFF
LNQKGPLTKGIFRQSANVKSRELKEKLNQVHLDCEIFVIAVSKDFLRNIPGSISSDLYDHWVS
VMDQGNDEEKINTVQRLLDQLPRANVLLRFLFVGLHNIHQSSSNQMTAFNLAVCVAPSILWPPASSSP
ELENEFTKKVSLLIQFLIENCLRIFGEEITSLFREVSVRCDTRENASDISCFQLNDSSYDLENELNEDV
DAPCSDLVKKLGQGSRSMDSVLTLSDYDLQPEVEGLLTLSDFDLAHSDKEDVQMKRPLESKPVNIVYT
KIPLRDHARAPSAMCTPSYLSTAAANAASLRHRRCSEPSIDYLDKLSYLREFYQKLRKSSCDAILS
QKDEDYLNQNLQEEGKTCFKQSLVTGTDVSKKNATTQNTKKKSLSGSEGNHVKLFPKSKPVAISVASY
SPMSSQDHSKNQPFVNTSGYSPHTADALKGPRTHRRRCSEPNIEDQNRKLTYLRTGIYSKKQHKTSCEAG
LLHGEEYLRHKSLQMEGQKLIQSLVMGIEVGKSSATNQNTKVLPPRLNLCPRTSYSSLSPPGTSPS
GSSVSSQDSAFSQISEHSVFTPTETSSPIDCTFQAQRKREDLSPDFSNASHVSGMPGSSGQACSRPAYT
KKDTMEWHSQMHSVTLHPSTWLRNGVASLKNWSLKKAKAARPEEEKIASPKGPLEPPPASGVPEANSL
QEEQKDLPLRAAEGSPVQSAQRCSSSPFQDSERHCSSPFLVESRLKLCMKSHIEIEPGSQSSSSGLPW
ERASASSWTLEDATSPDSGPTTVCDIEDRYLTKDI
  
```

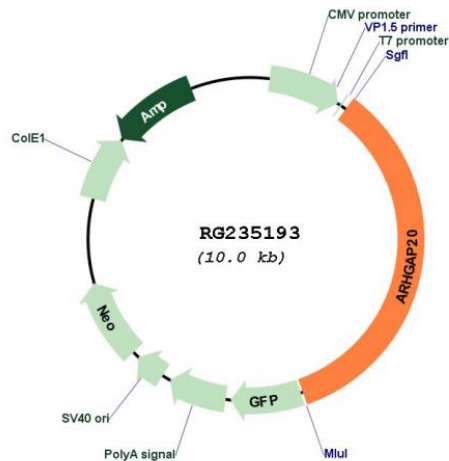
TRTRPLE - GFP Tag - V

Restriction Sites: SgfI-MluI

Cloning Scheme:



Plasmid Map:



ACCN: NM_001258417

ORF Size: 3465 bp

OTI Disclaimer: The molecular sequence of this clone aligns with the gene accession number as a point of reference only. However, individual transcript sequences of the same gene can differ through naturally occurring variations (e.g. polymorphisms), each with its own valid existence. This clone is substantially in agreement with the reference, but a complete review of all prevailing variants is recommended prior to use. [More info](#)

OTI Annotation: This clone was engineered to express the complete ORF with an expression tag. Expression varies depending on the nature of the gene.

Components: The ORF clone is ion-exchange column purified and shipped in a 2D barcoded Matrix tube containing 10ug of transfection-ready, dried plasmid DNA (reconstitute with 100 ul of water).

Reconstitution Method:

1. Centrifuge at 5,000xg for 5min.
2. Carefully open the tube and add 100ul of sterile water to dissolve the DNA.
3. Close the tube and incubate for 10 minutes at room temperature.
4. Briefly vortex the tube and then do a quick spin (less than 5000xg) to concentrate the liquid at the bottom.
5. Store the suspended plasmid at -20°C. The DNA is stable for at least one year from date of shipping when stored at -20°C.

RefSeq: [NM_001258417.1](#), [NP_001245346.1](#)

RefSeq Size: 5899 bp

RefSeq ORF: 3468 bp

Locus ID: 57569

UniProt ID: [Q9P2F6](#)

Cytogenetics: 11q22.3-q23.1

Gene Summary:

The protein encoded by this gene is an activator of RHO-type GTPases, transducing a signal from RAP1 to RHO and impacting neurite outgrowth. [provided by RefSeq, Sep 2016]