

Product datasheet for **RG235192**

HA1 (ARHGAP45) (NM_001258328) Human Tagged ORF Clone

Product data:

Product Type:	Expression Plasmids
Product Name:	HA1 (ARHGAP45) (NM_001258328) Human Tagged ORF Clone
Tag:	TurboGFP
Symbol:	ARHGAP45
Synonyms:	HA-1; HLA-HA1; HMHA1
Mammalian Cell Selection:	Neomycin
Vector:	pCMV6-AC-GFP (PS100010)
E. coli Selection:	Ampicillin (100 ug/mL)
ORF Nucleotide Sequence:	>RG235192 representing NM_001258328 Red=Cloning site Blue=ORF Green=Tags(s)

TTTTGTAATACGACTCACTATAGGGCGGCCGGAATTCGTCGACTGGATCCGGTACCGAGGAGATCTGCC
GCC**CGATCGCC**

ATGAGTCGGGGGCAAAGAGTTCTCAAGGGTCTGCTGGGCTGGGTTTGCACCTGGACCTGGGCCTGGAGAG
CCAGACTTGGAGCAAGGGGCTGTGGCCTTCATGTCCTGTGCCCCAGAGATCTGCCCTCCACCCGAGGA
GCTGCCAGGAAGGATGGGGCTGACGCGGTGTTCCCGGACCAAGCCTGGAGCCGCCCGCTGGGTCTCC
GGCGTCAAGGCCACAGGGACCTCAAGCGGCCACCAGCCTGAGCCGCCACGCCAGCGCGCTGGCTTCC
CCCTGTGGGTGCTGCCTCCTGGACACTGGGCCGGAGCCACCGGAGCCACTGACAGCCGCCAGCCCGGG
CGAGCTGCCACCGAGGGTGCCTGCCCGGACGTCGTGAGGACATCTCCATCTGCTGGCGGACGTGGCC
CGCTTCGCTGAGGGCCTTGAGAACTTAAGGAGTGTGTGTTGCGTGACGACCTCCTTGAGCCCGCCGCC
CGCGGGCCACGAGTGCCTGGGTGAGGCTCTGCGTGTGATGCATCAGATCATCTCCAAGTACCCGCTGT
GAACACCGTGGAGACGCTCACCGCAGCCGGCACCTCATTGCCAAGGTCAAAGCCTTCCATTATGAGAGC
ACAATGATCTGGAGAAACAGGAGTTCGAGAAGGCCCTGGAGACGATTGCTGTGGCCTTCAGTAGCACAG
TGTCCGAGTTCCTCATGGGTGAAGTGGACAGCAGCACCTCCTAGCAGTGCCTCCTGGGGACTCGAGCCA
GTCCATGGAAAGCCTGTATGGACCGGCCAGTGAAGGACGCTCCAGCCTGGAAGACTGTGACGCCCGC
TGCTGCCCGCCGAGGAGGTGGACGTGCTGCTACAGCGCTGTGAGGGGGCGTGGATGCCCACTGCTGT
ATGCCAAGAACATGGCCAAGTACATGAAGGACCTCATCAGCTACCTGGAGAAGCGGACGACGCTGGAGAT
GGAGTTTGCCAAGGGCCTGCAGAAGATCGCTCACAACCTGCAGACAGAGCGTCATGCAGGAGCCCCACATG
CCGCTCCTGTCCATCTACTCGTGGCCCTGGAGCAGGACCTGGAGTTCGGCCACAGCATGGTGCAGGCGG
TGGGCACCTTGACAGCCAGACCTTCAAGCAGCCCTGACCTGCGGCGGCTTGAACACGAGAAGCGCAG
GAAGGAGATCAAGGAGGCTGGCACCGTGGCCAGAGGAAGCTGCAAGAGGCGGAGTCCAACCTGCGCAAG
GCCAAGCAGGGTTACGTGACGCGCTGCGAGGACCAGACAAGGCTCGCTTCTCGTGGCCAAGGCGGAGG
AGGAGCAGGCTGGCAGCGCGCCGGGAGCAGGCAGCACGGCCACCAAGACCTGGACAAGCGCGCGGCT
GGAGGAGGAGCCAAGAACAAGGCGGAGGAAGCTATGGCCACCTACCGCCTGCGTGGCCGACGCGAAG



[View online »](#)

ACGCAGAAGCAGGAGCTGGAGGATACCAAGGTGACGGCGCTGCGGCAGATCCAGGAGGTCATCCGGCAGA
GCGACAAACCATCAAGTCGGCCACGATCTCCTACTACCAGATGATGCATATGCAGACGGCCCGCTGCC
CGTGCACTTCCAGATGCTGTGTGAGAGCAGCAAGCTGTATGACCCAGGCCAGCAGTACGCCCTCCACGTG
CGCCAGCTGCAGCGGGACCAGGAGCCCGATGTGCACTACGACTTTGAGCCCCACGTCTCCGCCAACGCCT
GGTCCCCCGTCATGCGTGCCCGGAAGAGCAGCTTCAACGTGAGTGATGTGGCGCGCCGGAGGCTGCCGG
GAGCCCCCAGAAGAAGCGGGTGCAGTGAAGGACACACCTGCCAAGGACCACAGGCCCGGGCGAGGACAC
CAGGTTTACAAGTCATGGCCGCTCTCGATCTCAGACTCGGACAGTGGGCTGGACCCCGCCCTGGCGCAG
GGGACTTTAAGAAGTTCGAGCGGACGTCATCCAGTGGTACCATGTCGTCCACGGAGGAGCTGGTGGACCC
AGACGGTGGAGCCGGGCTTCAGCCTTTGAGCAGGCTGACCTCAACGGCATGACCCCGAGCTGCCGGTG
GCCGTGCCAGTGGACGTTCCGCCACGAGGGGCTGTCCAAGCGGCCCGTACTCACCGGCTCCGGAAGC
TCCGCACGCCCGCAAGTGCCCGGAGTGAACAGCTACGTCTACTTCCAGGGTGTGAGTGTGAAGAGTG
CTGCTGGCTGCCACAAGAAATGTCTGGAGACGCTGGCCATACAGTGCGGGCACAAGAAGCTGCAAGGC
CGCTGCAGCTGTTCCGCCAGGACTTCAGCCACGCGGCCCGCAGCGCCCCGACGGCGTGCCTTCATCG
TCAAGAAGTGCCTCTGCGAGATCGAGCGCGGGCGCTGCGACCAAGGGCATCTACCGGGTCAATGGGT
AAAGACACGCGTGGAGAAGCTGTGCCAGGCCTTCGAGAACGGCAAGGAGCTGGTTCGAGCTGTCGAGGCC
TCGCCCCACGACATCAGCAACGTCTCAAGCTCTACCTGCGTCAGCTTCCCGAGCCGCTCATCTCCTTCC
GCCTCTACCACGAGCTCGTAGGGCTGGCCAAGGACAGCCTGAAGGCAGAGGCCGAGGCCAAGCGGGCGTC
CCGGGGCCCGCAGGACGGCTCGGAGAGCGAGGCAGTGGCGGTGGCCCTGGCAGGTCCGGTGCAGGAGCTC
CTGCGGGACCTGCCGCCTGAGAACCAGGCTCGCTGCAGTACCTGCTGCGTACCTACGCAGGATCGTGG
AGGTGGAGCAGGACAACAAGATGACCCCGGGAACCTGGGCATCGTGTTCGGGCCACGCTGCTTCGGCC
ACGGCCACCGAGGCCACCGTGTCCCTCCTCCTGTTGGATTATCCCCATCAGGCCCGCGTTCATCGAG
ACTCTCATCGTCCACTACGGCTGGTCTTCGAGGAGGAGCCGGAGGAGACCCCGGGGCCAGGACGAGT
CATCCAACCGAGCTGAGGTAGTCTCCAGGTGCCGTACCTGGAGCGGGCGAGGCCGTTGGTCTACCC
GCTGCAGGAGGCCGGCGGGACGGGTGCAGAGAATCCCGAGTTGTGTCCAACGATTTCGGACTCGGACCTA
GAGGAGGCCTCCGAGCTGCTGTCTCATCGGAGGCCAGTGCCTGGGCCACCTCAGCTTCTGGAGCAGC
AGCAGAGCGAGGCCAGCCTAGAGGTGGTTCTGGCAGCCACAGCGGCAGTGAAGGAGCAGTGGAGGCCAC
AGCCCCGGGAGGACGGGGACGGGGACGAGGACGGCCCGGCCAGCAGCTCTCAGGATTCAACACCAACCAG
TCCAACAACGTGCTGCAGGCCCACTGCCCCCATGAGGCTCCGTGGCGGGCGGATGACTGGGCTCT
GCAGGGAAAGGCAGCCGAATTCGTG

AGCGGACCGACGCTACGCGGCCGCTCGAG - GFP Tag - GTTAA

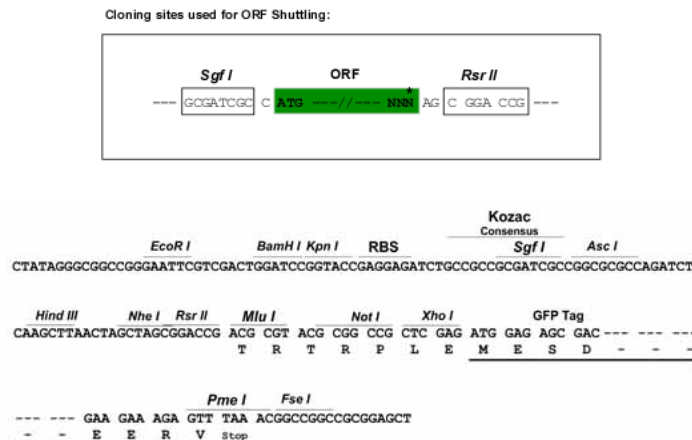
Protein Sequence: >RG235192 representing NM_001258328
 Red=Cloning site Green=Tags(s)

```
MSRGQRVLKGLLGWVCTWTWAWRRLGARGCGLHVLCPDPLPPEELPRKDGADAVFPGPSLEPPAGSS
GVKATGTLKRPTSLSRHASAAGFPLSGAASWTLGRSHRSPLTAASPGELPTEGAGPDVVEDISHLLADVA
RFAEGLKLEKCVLRDLDLEARRPRAHECLGEALRVMHQIISKYPLLNTVETLTAAGTLIAKVAFHYES
NNDLEKQEFKALETIAVAFSSTVSEFLMGEVDSSTLLAVPPGDSQSMESLYGPGSEGTPPSLED CDAG
CLPAEEVDVLLQRCEGGVDAALLYAKNMAKYMKDLISYLEKRITLMEFAKGLQKIAHNCRQSVMQEPHM
PLL SIYSLALEQDLEFGHSMVQAVGTLQTQTFMQPLTLRRELEHEKRRKEIKEAWHRAQRKLQEAESNLRK
AKQGYVQRCEHDHDKARFLVAKAEQAGSAPGAGSTATKTLDKRRRLEEEAKNKAEEAMATYRTCVADAK
TQKQELDTKVTALRQIQEVIRQSDQTIKSATISYYQMMHMQTAPLPVHFQMLCESSKLYDPGQYASHV
RQLQRDQEPDVHYDFEPHVSANAWSPVMRARKSSFNVSDVARPEAAGSPPEEGGCTEGTPAKDHRAGRGH
QVHKSWPLSISDSGLDPGPGAGDFKKFERTSSSGTMSSTEELVDPDGGAGASAFEQADLNGMTPPELV
AVPSGPFRRHEGLSKAARTHRLRKLRTPAKCRECNSYVYFQGAEECECLACHKKCLET LAIQCGHKKLQG
RLQLFGQDFSHAARSAPDGVPIVKKCVCEIERRALRTKGIYRVNGVKTRVEKLCQAFENGKELVELSQA
SPHDISNVLKL YLRQLPEPLISFRLYHELVLAKDSLKAEAEAKAASRGRQDGESEAVAVLAGRLREL
LRDLPPENRASLQYLLRHLRRIVEVEQDNKMPGNLGI VFGPTLLRPRPTEATVSSLVDYPHQARVIE
TLIVHYGLVFEEPEETPGGQDESSNQRAEVVVQPYLEAGEAVVYPLQEAADGCRESRVVNSDSDSL
EEASELLSSSEASALGHLSFLEQQQSEASLEVASGSHSGSEEQLEATAREDGDGEDGPAQQLSGFNTNQ
SNNVLQAPLPPMRLRGGMTLGS CRERQPEFV
```

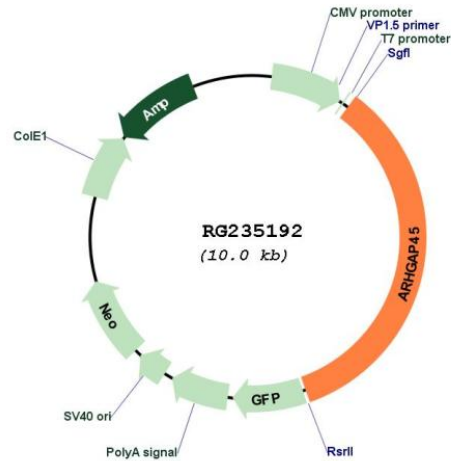
SGPTRRRLE - GFP Tag - V

Restriction Sites: SgfI-RsrII

Cloning Scheme:



Plasmid Map:



ACCN: NM_001258328

ORF Size: 3456 bp

OTI Disclaimer: The molecular sequence of this clone aligns with the gene accession number as a point of reference only. However, individual transcript sequences of the same gene can differ through naturally occurring variations (e.g. polymorphisms), each with its own valid existence. This clone is substantially in agreement with the reference, but a complete review of all prevailing variants is recommended prior to use. [More info](#)

OTI Annotation: This clone was engineered to express the complete ORF with an expression tag. Expression varies depending on the nature of the gene.

Components: The ORF clone is ion-exchange column purified and shipped in a 2D barcoded Matrix tube containing 10ug of transfection-ready, dried plasmid DNA (reconstitute with 100 ul of water).

Reconstitution Method:

1. Centrifuge at 5,000xg for 5min.
2. Carefully open the tube and add 100ul of sterile water to dissolve the DNA.
3. Close the tube and incubate for 10 minutes at room temperature.
4. Briefly vortex the tube and then do a quick spin (less than 5000xg) to concentrate the liquid at the bottom.
5. Store the suspended plasmid at -20°C. The DNA is stable for at least one year from date of shipping when stored at -20°C.

RefSeq: [NM_001258328.3](#)

RefSeq Size: 5399 bp

RefSeq ORF: 3459 bp

Locus ID: 23526

UniProt ID: [Q92619](#)

Cytogenetics: 19p13.3

Gene Summary:

Contains a GTPase activator for the Rho-type GTPases (RhoGAP) domain that would be able to negatively regulate the actin cytoskeleton as well as cell spreading. However, also contains N-terminally a BAR-domain which is able to play an autoinhibitory effect on this RhoGAP activity.[UniProtKB/Swiss-Prot Function]