

Product datasheet for **RG235184**

MEGF10 (NM_001256545) Human Tagged ORF Clone

Product data:

Product Type:	Expression Plasmids
Product Name:	MEGF10 (NM_001256545) Human Tagged ORF Clone
Tag:	TurboGFP
Symbol:	MEGF10
Synonyms:	EMARDD; SR-F3
Mammalian Cell Selection:	Neomycin
Vector:	pCMV6-AC-GFP (PS100010)
E. coli Selection:	Ampicillin (100 ug/mL)
ORF Nucleotide Sequence:	>RG235184 representing NM_001256545 Red=Cloning site Blue=ORF Green=Tags(s)

TTTTGTAATACGACTCACTATAGGGCGGCCGGAATTCGTCGACTGGATCCGGTACCGAGGAGATCTGCC
GCC**CGATCGCC**

ATGGTTATTTCTTTGAAGACTCATGCCTGAGCTTTATTTGTTTATTGTTATGCCACTGGATTGGGACAGCAT
CACCTCTGAATCTTGAAGACCCTAATGTGTGTAGCCACTGGGAAAGCTACTCAGTGACTGTGCAAGAGTC
ATACCCACATCCCTTTGATCAAATTTACTACAGAGCTGCACTGACATTCTAACTGGTTTAAATGCACG
CGGCACAGAGTCAGCTATCGGACAGCCTATCGACATGGGAGAAGACTATGTATAGGCGCAAGTCTCAGT
GTTGTCCTGGATTTTATGAAAGCGGGAAATGTGTGTCCCCACTGTGCTGATAAATGTGTCATGGTGC
CTGATTGCTCCAAACACCTGTCAGTGTGAGCCTGGCTGGGAGGGACCAACTGCTCCAGTGCCTGCGAT
GGTGATCACTGGGGTCCCACTGCACCAGCCGGTGCCAGTGCAAAAATGGGGCTCTGTGCAACCCCATCA
CCGGGGCTTGCCACTGTGCTGCGGGCTCCGGGGCTGGCGCTGCGAGGACCGCTGTGAGCAGGGCACCTA
TGGTAACGACTGTCATCAGAGATGCCAGTGCCAGAATGGAGCCACCTGCGACCACGTACCGGGGAATGC
CGCTGCCACCAGGATACACCGGAGCCTTCTGTGAGGATCTTTGTCTCCTGGTAAACATGGTCCACAGT
GTGAGCAGAGATGCCCTTGTCAAATGGAGGAGTGTGTATCACGTCCTGGAGAATGCTCTTGCCTTC
TGGCTGGATGGGCACAGTGTGTGGTCAGCCTTGCCCGAGGGTCGCTTTGGAAAGAACTGTTCCCAAGAA
TGCCAGTGCCATAATGGAGGGACGTGTGATGCTGCCACAGGCCAATGTCATTGCAGTCCAGGATACACAG
GGGAACGGTGCCAGGATGAGTGTCTGTTGGGACCTATGGCGTTCTCTGTGCTGAGACCTGCCAGTGTGT
CAACGGAGGGAAGTGTACCACGTGAGCGGCGCATGCCTCTGTGAAGCAGGCTTTGCTGGCGAGCGCTGC
GAAGCACGCTGTGCTGAGGGGCTCTACGGCATCAAATGTGACAAACGGTGTCCCTGCCACCTGGAAA
ACACTCATAGCTGTACCCCATGTCTGGAGAGTGTGCCTGCAAGCCGGGCTGGTCAAGACTCTACTGTAA
TGAGACATGTTCTCCTGGATTCTACGGGAAGCTTGCACAGATCTGCAGCTGCCAAAATGGGGCAGAC
TGTGACAGTGTGACTGGAAAGTGCACCTGTGCCAGGATTCAAAGGAATTGACTGCTCTACCCATGCC
CTCTGGGAACCTATGGGATAAACTGTTCTCTCGCTGTGGCTGTAAAAATGATGCAGTCTGCTCTCCTGT
GGACGGGCTTTGACTTGAAGCAGGCTGGCACGGGGTGGACTGCTCCATCAGATGTCCAGTGGCACA



[View online »](#)

TGGGGCTTTGGCTGTAACCTAACATGCCAGTGCCTCAACGGGGGAGCCTGCAACACCCTGGACGGGACCT
 GCACGTGTGCACCTGGATGGCGCGGGGAGAAATGCGAACTTCCTGCCAGGATGGCACGTACGGGCTGAA
 CTGTGCTGAGCGCTGCGACTGCAGCCACGCAGATGGCTGCCACCCTACCACGGGCCATTGCCCTGCCTC
 CCCGGATGGTCAGGTGCCACTGTGACAGCGTGTGTGCTGAGGGACGCTGGGGCCCCAACCTGCTCCCTGC
 CCTGCTACTGTAAAAATGGGGCTTATGCTCCCCTGATGATGGCATCTGCGAGTGTGCACCAGGCTTCCG
 AGGCACCCTTGTGAGAGGATCTGCTCCCCTGGTTTTTATGGGCATCGCTGCAGCCAGACATGCCACAG
 TGGCTTACAGCAGCGGGCCCTGCCACCACATCACCGCCCTGTGTGACTGCTTGCCTGGCTTACACAGCG
 CCCTCTGCAATGAAGTGTGCCAGTGGCAGATTTGGGAAAAACTGTGCAGGAATTTGTACTTGCACCAA
 CAACGGAACTGTAACCCATTGACAGATCTTGTGAGTGTACCCCGTTGGATTGGCAGTGACTGCTCT
 CAACCATGTCCACCTGCCACTGGGGCCCCAAACTGCATCCACACGTGCAACTGCCATAATGGAGCTTTCT
 GCAGCGCTACGATGGGGAATGTAATGCACTCCTGGCTGGACAGGGCTCTACTGCACTCAGAGATGTCC
 TCTAGGGTTTTATGAAAAAGATTGTGCACTGATATGCCAATGTCAAACGGAGCTGACTGCGACCACATT
 TCTGGGCAGTGTACTTGCCGCACTGGATTATGGGACGGCACTGTGAGCAGAAGTGCCTTCAGGAACAT
 ATGGCTATGGCTGTCCAGATATGTATTGTCTGAACAACCTCCACTGCGACCACATCACTGGGACCTG
 TACTGCAGCCCCGGATGGAAGGGAGCGAGATGTGATCAAGCTGGTGTATCATAGTTGAAATCTGAAC
 AGCTTAAGCCGAACCACTACTGCTCTCCCTGCTGATTCCCTACCAGATCGGGGCCATTGCAGGCATCATCA
 TTCTTGTCTAGTTGTTCTTCTTCTACTGGCATTGTTCTATTATTTATAGACACAAGCAGAAGGAAAGGA
 ATCAAGCATGCCAGCAGTTACCTACACCCTGCTATGAGGGTCGTCAATGCAGATTATACCATTTACGGA
 ACCCTTCTCACAGCAATGGTGGAAACGCTAATAGCCACTACTTACCAATCCCAGTTACCACACGCTCA
 CCCAGTGTCCACATCCCCTCACGTCAACAACAGGGACAGGATGACTGTCACGAAGTCAAAAAACAATCA
 ACTGTTTGTGAATCTTAAAAATGTGAACCTGGGAAGAGAGGCCCTGTGGGGACTGCACTGGGACATTG
 CCGGCTGACTGGAACATGGCGGCTACCTCAACGAGCTCGGTGCTTTTGGACTTGACAGAAGCTATATGG
 GAAAACTTAAAAAGACTGGGAAAGAAATCTGAATATAAATCAAGTAAGTCTCCCTCAAGCAGTCTGA
 GAACCCATATGCCACTATTAAGACCCACTGTACTTATCCCGAAAAGCTCAGAGTGTGGTTATGTGGAG
 ATGAAATCGCCGGCACGAAGAGATTCCCATATGCAGAGATCAATAACTCAACTCAGCCAACAGGAATG
 TCTATGAAGTTGAACCTACAGTGTGTGTCCAAGGAGTATTCAGCAATAATGGGCGTCTCTCCAGGA
 TCCATATGACCTCCCAAAGAACAGTCACATCCCTTGTCTTATGACCTGCTGCCAGTCCGAGACAGTTCA
 TCCTCCCCTAAGCAAGAGGACAGTGGTGGTAGCAGCAGCAACAGCAGCAGCAGCAGTGA

ACGCGTACGCGGCCGCTCGAG - GFP Tag - GTTTAA

Protein Sequence:

>RG235184 representing NM_001256545
 Red=Cloning site Green=Tags(s)

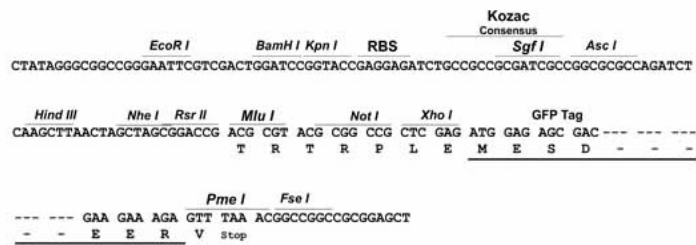
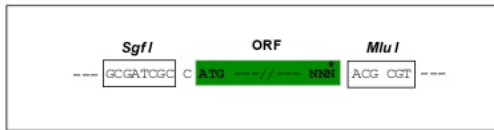
MVISLNSCLSFICLLLCHWIGTASPLNLEDPNVCSHWESYSVTVQESYPHPFDQIYYTSCTDILNWFKCT
 RHRVSYRTAYRHGEKTMYYRKSQCPCGFYESGEMCVPHCADKCVHGRCIAPNTCQCEPWGGTNCSSACD
 GDHWGPHCTSRCQCKNGALCNPIITGACHCAAGFRGWRCEDRCEQGTGNDCHQRCQCNQNGATCDHVTGEC
 RCPPGYTGAFCEDLPPGKHGPPQCEQRCPCQNGGVCHHVTGECSCPSGWMGTVCQPCPEGRFGKNCQS
 CQCHNGGTCDAAATGQCHCSPGYTGERCQDECPVGTGVLCAETCQCQVNGGKCYHVSAGLCEAGFAGERC
 EARLCPPEGLYGIKCDKRCPCHELENTHSCHPMSGECACKPGWSGLYCNETCSPGFYGEACQICSCQNGAD
 CDSVTGKCTCAPGFKIDCSTPCPLGTGYNCSRRCGCKNDAVCSVPVDSCTCKAGWHGVDCSIRCPST
 WGFGCNLTCQCLNGGACNTLDGTCTCAPGWRGEKCELPQDGTGLNCAERCDCSHADGCHPTTGHCRCL
 PGWSGVHCDVCAEGRWGPNCSLPCYCKNGASCSPDDGICECAPGFRGTTQCRICSPGFYGHRCSTCPQ
 CVHSSGPCHHITGLCDLPGFTGALCNEVCPSPGRFGKNCAGICTCTNNGTCNPIDRSCQCYPGWIGSDCS
 QPCPPAHWGPNCIHTCNCHNGAFCSAYDGECKCTPGWTGLYCTQRCPLGFYKDCALICQCNQNGADCDHI
 SGQCTCRTGFMGRHCEQKCPSTYGYGCRQICDCLNNSCDHITGTCTCYSPGWKGARCDQAGVIIVGNLN
 SLSRTSTALPADSYQIGAIAGIILVVLVLLALFIIYRHKQKQKESMPAVTYTPAMRVVNADYTIISG
 TLPHSNNGNANSHYFTNPSYHTLTQCATSPHVNNRDRMTVTKSKNNQLFVNLKNVNPGRKRPVGDCTGTL
 PADWKHGGYLNELGAFGLDRSYMGLSLKDLGKNSEYNSSNCSLSSENPHYATIKDPPVLIPKSSECGYVE
 MKSPARRDSPYAEINNSTSANRNVEVEPTVSVVQGVFVSNNGRLSQDPYDLPKNSHIPCHYDLLPVRDSS
 SSPKQEDSGGSSSSSSSE

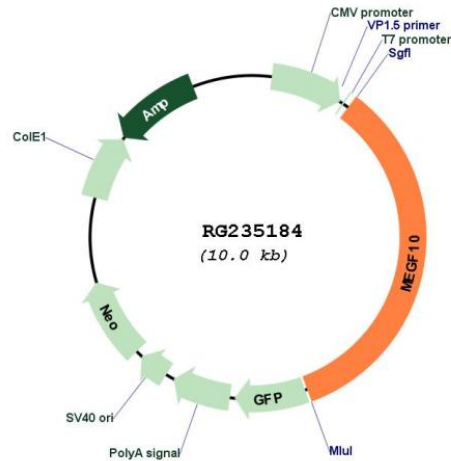
TRTRPLE - GFP Tag - V

Restriction Sites: SgfI-MluI

Cloning Scheme:

Cloning sites used for ORF Shuttling:



Plasmid Map:


ACCN: NM_001256545

ORF Size: 3420 bp

OTI Disclaimer: The molecular sequence of this clone aligns with the gene accession number as a point of reference only. However, individual transcript sequences of the same gene can differ through naturally occurring variations (e.g. polymorphisms), each with its own valid existence. This clone is substantially in agreement with the reference, but a complete review of all prevailing variants is recommended prior to use. [More info](#)

OTI Annotation: This clone was engineered to express the complete ORF with an expression tag. Expression varies depending on the nature of the gene.

Components: The ORF clone is ion-exchange column purified and shipped in a 2D barcoded Matrix tube containing 10ug of transfection-ready, dried plasmid DNA (reconstitute with 100 ul of water).

Reconstitution Method:

1. Centrifuge at 5,000xg for 5min.
2. Carefully open the tube and add 100ul of sterile water to dissolve the DNA.
3. Close the tube and incubate for 10 minutes at room temperature.
4. Briefly vortex the tube and then do a quick spin (less than 5000xg) to concentrate the liquid at the bottom.
5. Store the suspended plasmid at -20°C. The DNA is stable for at least one year from date of shipping when stored at -20°C.

RefSeq: [NM_001256545.2](#)

RefSeq Size: 7638 bp

RefSeq ORF: 3423 bp

Locus ID: 84466

UniProt ID: [Q96KG7](#)

Cytogenetics: 5q23.2

Protein Families: Transmembrane

Gene Summary: This gene encodes a member of the multiple epidermal growth factor-like domains protein family. The encoded protein plays a role in cell adhesion, motility and proliferation, and is a critical mediator of apoptotic cell phagocytosis as well as amyloid-beta peptide uptake in the brain. Expression of this gene may be associated with schizophrenia, and mutations in this gene are a cause of early-onset myopathy, areflexia, respiratory distress, and dysphagia (EMARDD) as well as congenital myopathy with minicores. Alternatively spliced transcript variants have been observed for this gene. [provided by RefSeq, Apr 2012]