

Product datasheet for **RG235180**

SLC4A7 (NM_001258379) Human Tagged ORF Clone

Product data:

Product Type:	Expression Plasmids
Product Name:	SLC4A7 (NM_001258379) Human Tagged ORF Clone
Tag:	TurboGFP
Symbol:	SLC4A7
Synonyms:	NBC2; NBC3; NBCN1; SBC2; SLC4A6
Mammalian Cell Selection:	Neomycin
Vector:	pCMV6-AC-GFP (PS100010)
E. coli Selection:	Ampicillin (100 ug/mL)
ORF Nucleotide Sequence:	>RG235180 representing NM_001258379 Red=Cloning site Blue=ORF Green=Tags(s)

TTTTGTAATACGACTCACTATAGGGCGGCCGGAATTCGTCGACTGGATCCGGTACCGAGGAGATCTGCC
GCC**CGATCGCC**

ATGGAGGCTGATGGGGCCGGCGAGCAGATGAGACCGCTACTCACCCGGGTCTGATGAAGAAGCTGTTG
TGGATCTTGGCAAACTAGCTCAACTGTGAACACCAAGTTTAAAAAGAAGAACTAGAAAGTCATAGAGC
TGTATATATTGGTGTTCACGTCCCGTTTAGTAAGAGAGTCGTCGGCGTCATAGGCATCGCGACACAAA
CATCACCACCGGAGAAGAAAAGATAAAGAATCAGATAAAGAAGATGGACGGGAATCTCCTCTTATGATA
CACCATCCAGAGAGTTCAGTTTATCCTTGGTACTGAAGATGATGATGAAGAACATATCCCATGATCT
CTTCACGGAAATGGATGAACTGTGTACAGAGATGGAGAAGAATATGAATGGAAAGAACTGCTAGATGG
CTGAAATTTGAAGAGGATGTTGAAGATGGCGGTGACCGATGGAGTAAACCTTATGTGGCAACTCTCTCT
TGCACAGTCTTTTTGAACTAAGGAGTTGCATCCTCAATGGAACAGTCATGCTGGATATGAGAGCAAGCAC
TCTAGATGAAATAGCAGATATGGTATTAGACAACATGATAGCTTCTGGCCAATTAGACGAGTCCATACGA
GAGAATGTCAGAGAAGCTCTTCTGAAGAGACATCATCAGAATGAGAAAAGATTACCCAGTCGGATTC
CTCTTGTTCGATCTTTTGCAGATATAGGCAAGAAAACATCTGACCCTCACTTGCTTGAAGGAATGGTAT
TTTGGCCTCTCCCAGTCTGCTCCTGAAAACCTTGACAATAGTAAAAGTGGAGAAATTAAGGTAATGGA
AGTGGTGAAGCAGAGAAAATAGTACTGTTGACTTCAGCAAGGTTGATATGAATTCATGAGAAAATTC
CTACGGGTGCTGAGGCATCCAACGTCCTGGTGGCGAAGTAGACTTTTTGGAAAGGCCAATAATTGCATT
TGTGAGACTGGCTCCTGTCTCCTTACAGGTTGACTGAGGTCCCTGTTCCAACCAGGTTTTTGT
TTGTTATTGGGTCCAGCGGGCAAGGCACCACAGTACCATGAAATGGACGATCAATAGCCACTCTCATGA
CAGATGAGATTTCCATGATGTAGCTTATAAAGCAAAAGACAGAAATGACCTCTTATCTGGAATTGATGA
ATTTTTAGATCAAGTAACTGTCTACCTCCAGGAGAGTGGGATCCTTCTATACGCATAGAACCACAAAA
AGTGTCCCTTCTCAGGAAAAGAGAAAGATTCCTGTGTTTCACAATGGATCTACCCACACTGGGTGAGA
CTCCTAAAGAGGCCGCTCATCATGCTGGCCTGAGCTACAGAGGACTGGACGGCTTTTTGGTGGTTTGT
ACTTGACATCAAAGGAAAGCACCTTTTTTCTTGAGTGACTTCAAGGATGCATTAAGCCTGCAGTGCCTG



[View online »](#)

```
GCCTCGATTCTTTTCTATACTGTGCCTGTATGTCTCCTGTAATCACTTTTGGAGGGCTGCTTGGAGAAG
CTACAGAAGGCAGAAATAAGTGAATAGAGTCTCTTTTGGAGCATCATTAACTGGGATTGCCTATTCATT
GTTTGTCTGGGCAACCTCTAACAATATTGGGGAGCACAGGTCCAGTTCTAGTGTTTGAAAAATTTTATAT
AAATTCTGCAGAGATTATCAACTTTCTTATCTGTCTTAAAGAACAGTATTGGTCTGTGGACTTCTTTT
TGTGCATTGTTTTGGTTGCAACAGATGCAAGCAGCCTTGTGTGTATATTACTCGATTTACAGAAGAGGC
TTTTGCAGCCCTTATTTGCATCATATTCATCTACGAGGCTTTGGAGAAGCTCTTTGATTTAGGAGAACA
TATGCATTTAATATGCACAACAACCTTAGATAAACTGACCAGTACTCATGTGTATGTACTGACCTCCAA
ACCCAGCAATGAACTCTAGCACAATGGAAGAAAGATAATATAACAGCACACAATATTTCTGGAGAAA
TCTTACTGTTTCTGAATGTAATAAACTCGTGGTGTATTCTTGGGGTCTGCTTGTGGTATCATGACCT
TATATTCCAGATGTGCTCTTTTGGTGTGCATCTTGTTTTTACAAACATTTTTCTGTCTTCATTCTCA
AGCAATTAAGACCAAGCGTTACTTTCTACCAAGGTGCGATCGACAATCAGTATTTTGTGTATTTCT
CACAAATAGTAATAATGGTTACAATTGACTACCTTGTAGGAGTCCATCTCCTAACTTTCATGTTCTGAA
AAATTTGAGCCTACTCATCCAGAGAGAGGGTGGATCATAAGCCCACTGGGAGATAATCCTTGGTGGACCT
TATTAATAGCTGCTATTCTGCTTTGCTTTGTACCATTCTCATCTTATGGATCAACAAATCACAGCTGT
AATTATAAACAGAAAGGAACACAATTTGAAGAAAGGAGCTGGCTATCACCTTGATTTGCTCATGGTTGGC
GTTATGTTGGGAGTTTGTCTGTGCATGGGACTTCCATGGTTTGTGGCTGCAACAGTGTGTCAATAAGTC
ATGTCAACAGCTTAAAAGTTGAATCTGAATGTTCTGCTCCAGGGGAACAACCAAGTTTTTGGGAATTCG
TGAACAGCGGGTTACAGGGCTAATGATTTTTATTCTAATGGGCTCTCTGTGTTGATGACTTCAGTCCTA
AAGTTTATTCCAATGCCTGTTCTGTATGGTGTTCCTTTATATGGGAGTTTCTCATTAAAAGGAATCC
AGTTATTTGACCGTATAAAATTTTGGAAATGCCTGCTAAGCATCAGCCTGATTTGATATACCTCCGTTA
TGTGCCGCTCTGGAAGGTCCATATTTTACAGTCACTCAGCTTACTTGTGGTCTTTTATGGGTGATA
AAAGTTTACAGTCTGCTGCAGTGGTTTTCCCATGATGGTCTTGCATTAGTGTGTTGCGCAAACTCATGG
ACCTGTGTTTACGAAGAGAGAAGTTAGTTGGCTTGTATGATCTTATGCCAGAAAGTAAAGAAAAGAGA
AGATGACAAAAAGAAAAAGAGAAAGGAAGCTGAACGGATGCTTCAAGATGATGATGATGATGATGATGAC
CTTCCATTTGAAGGGGAAGTCTCTTGCAAATTCAGTCAAGGCCCTAAAATATAGTGTGATCCCTCAA
TTGTTAACATATCAGATGAAATGGCCAAAATGCACAGTGAAGGCACCTTCCATGAATACTGAGAATGC
CAAAGTAACCAGATCTAACATGAGTCTGATAAACCTGTGAGTGTGAAAAAAGTTTTGAAGATGAACCA
AGAAAAGAAATACGTGGATGCTGAAACTTCATTA
```

ACGCGTACGCGGCCGCTCGAG – GFP Tag – GTTTAA

Protein Sequence:

>RG235180 representing NM_001258379
 Red=Cloning site Green=Tags(s)

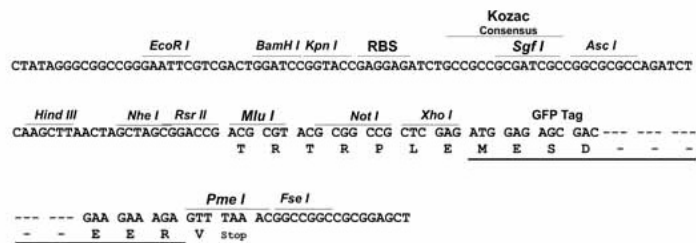
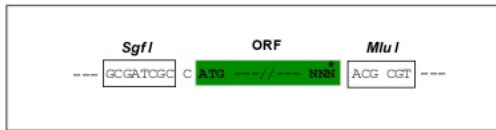
```
MEADGAGEQMRPLLTRGPDEEAVVDLKGTSSTVNTKFEKEELESRAVYIGVHVPPSKESRRRHRHRGHK
HHHRRRKDKESDKEDGRESPSYDTPSQRVQFILGTEDDDEEHIPHDLFTEMDLICYRDGEEYEWKETARW
LKFEEDVEDGGDRWSKPYVATLSLHSLFELRSCILNGTVMLDMRASTLDEIADMVLDNMIASGQLDESIR
ENVREALLKRHHHQNEKRFTSRIPLVRSFADIGKKHSDPHLLERNGILAS PQSAPGNL DNSKSGEIKGNG
SGGSRENSTVDFSKVDMNFMRKIPTGAEASNVLVGEVDFLERPIIAFVRLAPAVLLTGLTEVPVPTRFLF
LLLGPAGKAPQYHEIGRSIATLMTDEIFHDVAYKAKDRNDLLSGIDEFLDQVTVLPPGEWDPSSIRIEPPK
SVPSQEKRKIPVFHNGSTPTLGETPKEAAHHAGPELQRTGRLFGGLILDIKRKAPFFLSDFKDALSLQCL
ASILFLYCACMSPVITFGLLGEATEGRISAIESLFGASLTGIAYSL FAGQPLTILGSTGPVLVFEKILY
KFCRDYQLSYLSLRTSIGLWTSFLCIVLVATDASSLVCIYITRFTEEAFAALICIIIFIYEALEKLFDLGET
YAFNMHNNLDKLTSYSCVCTEPPNPSNETLAQWKKNITAHNISWRNLTVSECKLRGVFLGSACGHHGP
YIPDVLFWCVILFFTTFFLSSFLKQFKTKRYFPTKVRSTISDFAVFLTIVIMVTIDYLVGVSPKLVHPE
KFEPTHPERGWII SPLGDNPWWTLLIAAIPALLCTILIFMDQQTAVIINRKEHKLKKGAGYHLDLLMVG
VMLGVCSVMGLPWFVAATVLSISHVNSLKVSECSAPGEQPKFLGIREQRTGLMIFILMGLSVFMTSVL
KFIPMPVLYGVFLYMGVSSLKGIQLFDRIKLFMPAKHQPDLIYLRVPLWKVHIFTVIQLTCLVLLWVI
KVSAAAVVFPMMVLALVFVRKLMDLCTFKRELSWLDLMPESKKKKEDDKKKKEKEEAERMLQDDDDTVH
LPFEGSLLQIPVKALKYSVDPSIVNISDEMAKTAQWKALSMNTENAKVTRSNMSPDKPVSVKISFEDEP
RKKYVDAETSL
```

TRTRPLE – GFP Tag – V

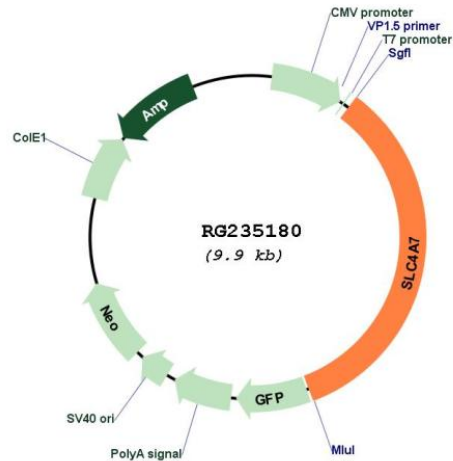
Restriction Sites: SgfI-MluI

Cloning Scheme:

Cloning sites used for ORF Shuttling:



Plasmid Map:



ACCN: NM_001258379

ORF Size: 3393 bp

OTI Disclaimer: The molecular sequence of this clone aligns with the gene accession number as a point of reference only. However, individual transcript sequences of the same gene can differ through naturally occurring variations (e.g. polymorphisms), each with its own valid existence. This clone is substantially in agreement with the reference, but a complete review of all prevailing variants is recommended prior to use. [More info](#)

OTI Annotation: This clone was engineered to express the complete ORF with an expression tag. Expression varies depending on the nature of the gene.

Components: The ORF clone is ion-exchange column purified and shipped in a 2D barcoded Matrix tube containing 10ug of transfection-ready, dried plasmid DNA (reconstitute with 100 ul of water).

Reconstitution Method:

1. Centrifuge at 5,000xg for 5min.
2. Carefully open the tube and add 100ul of sterile water to dissolve the DNA.
3. Close the tube and incubate for 10 minutes at room temperature.
4. Briefly vortex the tube and then do a quick spin (less than 5000xg) to concentrate the liquid at the bottom.
5. Store the suspended plasmid at -20°C. The DNA is stable for at least one year from date of shipping when stored at -20°C.

RefSeq: [NM_001258379.2](#)

RefSeq Size: 7741 bp

RefSeq ORF: 3396 bp

Locus ID: 9497

UniProt ID: [Q9Y6M7](#)

Cytogenetics: 3p24.1

Protein Families: Druggable Genome, Transmembrane

Gene Summary: This locus encodes a sodium bicarbonate cotransporter. The encoded transmembrane protein appears to transport sodium and bicarbonate ions in a 1:1 ratio, and is thus considered an electroneutral cotransporter. The encoded protein likely plays a critical role in regulation of intracellular pH involved in visual and auditory sensory transmission. Alternatively spliced transcript variants encoding distinct isoforms have been described. [provided by RefSeq, Apr 2012]