

CATCACTCAAATGCTGCAGTATCACAACAAGGCCATCTGCTAAACATCCCGAGCTGGAATTGGAAGAA
GGTGATGACGCAATCTGCCTCGCAGAGTTGAAGTTGGGCTTCATAGCCCAGAGCTGCCTGGCTCAAGGCC
TCTCCACCATGCTTGCCAACCTCTTCTCCATGAGGTCAATCATAAAGATTGAGGAAGACACATGGCAGAA
ATACTACTTGGAAAGGAGTCTCAAATGAAATGTACACAGAATATCTCTCCAGTGCCTTCGTGGGTCTGTCC
TTCCCTACTGTTTGTGAGCTGTGTTTTGTGAAGCTCAAGCTCCTAATGATAGCCATTGAGTACAAGTCTG
CCAACCGAGAGAGCCGAAGCCGAAAGCGTATATTAATTAATCCTGGAAACCATCTTAAGATCCAAGAAGG
TACTTTAGGATTTTTTCATCGCAAGTGATGCCAAGAAGTAAAAGGGCATTTTTTTACTGCAAGGCCTGT
CATGATGACATCACAGATCCCAAAAAGAATAAAAAAATGTGGCTGCAACCGCTTGAAGATGAGCAGCCGT
CAACACTATCACAAAAAAAAGCAACGGAATGGAGGCATGCGGAACTCACCAACACCTCGCCTAAGCT
GATGAGGCATGACCCCTTGTTAATTCCTGGCAATGATCAGATTGACAACATGGACTCCAATGTGAAGAAG
TACGACTCTACTGGGATGTTTCACTGGTGTGCACCAAGGAGATAGAGAAAAGTATCCTGACTCGAAGTG
AAGCTGCCATGACCGTCTGAGTGGCCATGTCGTGGTCTGCATCTTTGGCGACGTCAGCTCAGCCCTGAT
CGGCCTCCGGAACCTGGTATGCCGCTCCGTGCCAGCACTTTCATTACCATGAGCTCAAGCACATTGTG
TTTGTGGGCTCTATTGAGTACCTCAAGCGGAATGGGAGACGCTTCATAACTCCCCAAAGTGCCATAT
TGCTGTGACGCAATCAGAATAATATTGATGATACTTCGCTGCAGGACAAGGAATGCATCTTGGCGTCACTC
AACATCAAATCTATGCAGTTTGTGACAGCATCGGAGTCTTGCAGGCTAATTCCTCAAGGGTTCACACCTC
CAGGAATGGATAGATCCTCTCCAGATAACAGCCCAGTGCACGGGATGTTACGTCAACCATCCATCACAAC
TGGGGTCAACATCCCCATCATCACTGAAGTGTGAAACGATACTAATGTTCAAGTTTTTGGACCAAGACGAT
GATGATGACCCTGATACAGAAGTACCTCACGCAGCCCTTTGCCTGTGGGACAGCATTGGCCGTCAAGT
TCCTGGACTCACTCATGAGCGCGACGTAATCAATGACAATATCCTCACCTGATACGGACCCTGGTGAC
CGGAGGAGCCACGCCGAGCTGGAGGCTCTGATTGCTGAGGAAAACGCCCTTAGAGGTGGCTACAGCACC
CCGCAGACACTGGCCAATAGGGACCGCTGCCCGTGGCCAGTTAGCTCTGCTCGATGGCCATTTGCGG
ACTTAGGGGATGGTGGTTGTTATGGTGATCTGTTCTGCAAAGCTCTGAAAACATATAATATGCTTTGTTT
TGGAAATTTACCGCTGAGAGATGCTCACCTCAGCACCCCCAGTCAGTGCACAAAGAGGTATGTCATCACC
AACCCGCCCTATGAGTTTGTGCTCGTGCCGACGGACCTGATCTTCTGCTTAATGCAGTTTGACCACAATG
CCGGCCAGTCCCGGGCCAGCCTGTCCCATTCTCCCACTCGTCGAGTCTCCAGCAAGAAGAGCTCCTC
TGTTCACTCCATCCATCCACAGCAAACCGACAGAACCGGCCAAGTCCAGGGAGTCCCGGGACAAAACAG
AACAGAAAAGAAATGTTTACAGA

AGCGGACCGACGCGTACGCGGCCGCTCGAG - GFP Tag - GTTTAA

Protein Sequence: >RG235178 representing NM_001271518
 Red=Cloning site Green=Tags(s)

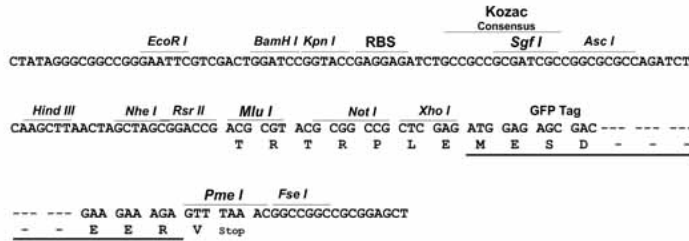
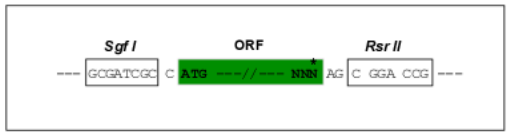
MANGGGGGGGSSGGGGGGSSLRMSSNIHANHLSLDASSSSSSSSSSSSSSSSSSSSSSSVHEPKMDALI
 IPVTMEVPCDSRQRMWAWFLASSMVTFFGGLFIILLWRTLKYLWTVCCCHCGGKTKVVLVFALSIGALVI
 YFIDSSNPIESCQNFYKDFTLQIDMAFNVFLLYFGLRFIAANDKLWFLEVNSVVDFFTVPPVFSVYL
 NRSWGLRFLRALRLIQFSEILQFLNLIKTSNSIKLVNLLSIFISTWLTAAGFIHLVENSQDPWENFQNN
 QALTYWECVYLLMVTMSTVGYGDVYAKTTLGRLFMVFFILGGLAMFASYVPEIIEIIGNRKKYGGYSYSAV
 SGRKHIVVCGHITLESVSNFLKDFLHKDRDDVNVEIVFLHNISPNELEALFKRHFTQVEFYQGSVLNPH
 DLARVKIESADAACLILANKYCADPDAEDASNIMRVISIKNYHPKIRIITQMLQYHNKAHLLNIPSWNWE
 GDDAICLAELKLGFAIQSCLAQGLSTMLANLFSMRSFIKIEEDTWQKYYLEGVSNEMYTEYLSSAFVGLS
 FPTVCELFCVKLKLMLIAIEYKSANRESRSRKRILINPGNHLKIQEGTLGFFIASDAKEVKRAFFYCKAC
 HDDITDPKRIKCGCKRLEDEQPSTLSPKKKQRNGGMRNSPNTSPKLMRHDPLLIPGNDQIDNMSNVKK
 YDSTGMFHWCAPKEIEKVILTRSEAAMTVLSGHVVVICIFGDVSSALIGLRNLVAMPLRASFHYHELKHIV
 FVGSIEYLKREWETLHNFPKVSILPGTPLSRADLRVNIINLDCMCVILSANQNNIDDTSLQDKECILASL
 NIKSMQFDDSIGVLQANSQGFPPGMDRSSPDNSPVHGMLRQPSITTVGNIPITELVNDTNVQFLDQDD
 DDDPDTELYLTQPFACGTAFVSVLDSLMSATYFNDNILTLIRTLVTGGATPELEALIAEENALRGGYST
 PQTLANRDRCRVAQLALLDGPFDLGDGGCYGDLFCALKTYNMLCFGIYRLRDAHLSTPSQCTKRYVIT
 NPPYEFELVPTDLIFCLMQFDHNAGQSRASLSHSSSSQSSSKSSSVHSIPSTANRQNRPKSRESRDKQ
 NRKEMVYR

SGPTRRRLE - GFP Tag - V

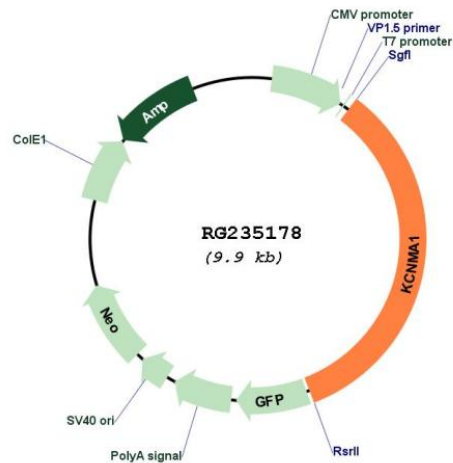
Restriction Sites: SgfI-RsrII

Cloning Scheme:

Cloning sites used for ORF Shuttling:



Plasmid Map:



ACCN: NM_001271518

ORF Size: 3384 bp

OTI Disclaimer: The molecular sequence of this clone aligns with the gene accession number as a point of reference only. However, individual transcript sequences of the same gene can differ through naturally occurring variations (e.g. polymorphisms), each with its own valid existence. This clone is substantially in agreement with the reference, but a complete review of all prevailing variants is recommended prior to use. [More info](#)

OTI Annotation: This clone was engineered to express the complete ORF with an expression tag. Expression varies depending on the nature of the gene.

Components: The ORF clone is ion-exchange column purified and shipped in a 2D barcoded Matrix tube containing 10ug of transfection-ready, dried plasmid DNA (reconstitute with 100 ul of water).

Reconstitution Method:

1. Centrifuge at 5,000xg for 5min.
2. Carefully open the tube and add 100ul of sterile water to dissolve the DNA.
3. Close the tube and incubate for 10 minutes at room temperature.
4. Briefly vortex the tube and then do a quick spin (less than 5000xg) to concentrate the liquid at the bottom.
5. Store the suspended plasmid at -20°C. The DNA is stable for at least one year from date of shipping when stored at -20°C.

RefSeq: [NM_001271518.2](#)

RefSeq Size: 11832 bp

RefSeq ORF: 3387 bp

Locus ID: 3778

UniProt ID: [Q12791](#)

Cytogenetics: 10q22.3

Protein Families:	Druggable Genome, Ion Channels: Potassium, Transmembrane
Protein Pathways:	Vascular smooth muscle contraction
Gene Summary:	MaxiK channels are large conductance, voltage and calcium-sensitive potassium channels which are fundamental to the control of smooth muscle tone and neuronal excitability. MaxiK channels can be formed by 2 subunits: the pore-forming alpha subunit, which is the product of this gene, and the modulatory beta subunit. Intracellular calcium regulates the physical association between the alpha and beta subunits. Alternatively spliced transcript variants encoding different isoforms have been identified. [provided by RefSeq, Jul 2008]