

Product datasheet for **RG235177**

MYBPC1 (NM_001254721) Human Tagged ORF Clone

Product data:

Product Type:	Expression Plasmids
Product Name:	MYBPC1 (NM_001254721) Human Tagged ORF Clone
Tag:	TurboGFP
Symbol:	MYBPC1
Synonyms:	LCCS4; MYBPCC; MYBPCS; MYOTREM; ssMyBP-C
Mammalian Cell Selection:	Neomycin
Vector:	pCMV6-AC-GFP (PS100010)
E. coli Selection:	Ampicillin (100 ug/mL)
ORF Nucleotide Sequence:	>RG235177 representing NM_001254721 Red=Cloning site Blue=ORF Green=Tags(s)

TTTTGTAATACGACTCACTATAGGGCGGCCGGAATTCGTCGACTGGATCCGGTACCGAGGAGATCTGCC
GCC**CGATCGCC**

ATGCCAGAACCCTAAGAAAGAGGAAAATGAAGTGCCAGCCCCAGCCCCACCCCGGAAGAACCAAGTA
AAGAGAAGGAGGCCGGAACCTACACCAGCAAAAGACTGGACCCCTTGTCGAAACTCCTCTGGGAGGAACA
AGCCAAGCAGAAATGCCAACTCCCAGCTGTCCATCTTGTTTCATTGAAAAACCTCAAGGAGGAACAGTGAAA
GTTGGTGAAGATACACCTTCATAGCCAAAGTCAAGGCTGAAGATCTTCTGAGAAAACCCACTATCAAAAT
GGTTCAAAGGAAAATGGATGGACCTGGCCAGCAAAGCCGGAAGCACCTTCAGCTGAAGGAAACCTTTGA
GAGGCACAGTCGGGTGTACACATTTGAGATGCAGATCATCAAGGCCAAAGATAACTTTGCAGGAAATTAC
AGATGCGAGGTCACCTATAAGGATAAGTTTGACAGCTGTTCAATTTGATCTTGAAGTGCACGAATCTACTG
GGACTACTCCTCAACATTGACATCAGATCTGCTTTCAAGAGAAGGGAGGTGAAGCAGCAGGAGGAAGAACC
CCAGGTGGACGTATGGGAGTTGCTGAAGAACGCGAAACCCAGTGAGTACGAGAAGATCGCCTTCCAGTAT
GGAATCACCGACCTGCGCGCATGCTCAAGCGACTCAAGCGCATGCGCAGAGAGGAGAAGAAGAGCGCAG
CTTTTGCAAAAATCTTGATCCTGCATATCAGGTTGACAAAGGAGGCAGAGTGAGGTTTGTGTGGAGCT
GGCAGATCCAAAGTTGGAGGTGAAATGGTATAAAAAATGGTCAAGAAATTCGACCCAGTACCAAATACATC
TTTGAACACAAAGGATGCCAGAGAATCCTGTTTATCAATAACTGTCAGATGACAGATGATTCAGAGTATT
ATGTGACAGCCGGTGATGAGAAATGTTCCACTGAGCTTTCGTAAGAGAGCCTCCAATTATGGTGACCAA
ACAGCTGGAAGATACAACCTGCTTATTGTGGGAGAGAGTGAATTAAGAATGTGAGGTGTCTGAAGATGAT
GCCAATGTAAAATGGTTTAAAGATGGTGAAGAGATTATCCCTGGTCCAAAATCAAGATACCGAATTAGAG
TTGAGGGTAAAAAACACATCTTGATCATAGAGGGAGCAACAAAGGCTGATGCTGCAGAATATTCAGTAAT
GACAACAGGAGGACAATCATCTGCTAAACTTAGTGTGACTTGAAACCTCTGAAGATTTTGACACCTCTG
ACTGATCAGACTGTAATCTTGAAAAGAAATCTGCCTGAAGTGTGAAATCTCTGAAAACATACCAGGAA
AATGGACTAAAAATGGCCTACCTGTTCCAGGAGAGTGACCGTCTAAAGGTGGTTCACAAGGGAAGGATCCA
CAAGTTAGTGATAGCCAATGCCCTCACTGAAGATGAAGGTGATTATGATTTGCACCTGATGCCTACAAT



[View online »](#)

GTTACTCTGCCTGCCAAAGTTCATGTTATTGATCCTCCTAAGATCATCCTGGATGGTCTTGATGCTGACA
 ACACAGTGACAGTGATTGCAGGAAACAAGCTTCGTCTTGAGATCCCCATCAGCGGAGAACCACCTCCTAA
 AGCCATGTGGAGCCGGGAGATAAAGCTATTATGGAAGGCAGTGGCCGGATAAGAACAAGATCTTACCTT
 GATAGCAGCACTCTGGTCATTGATATAGCTGAAAGAGATGACTCTGGTGTACCACATCAATCTGAAAA
 ACGAAGCTGGAGAGGCACATGCAAGCATCAAGGTTAAAGTTGTGGACTCCCTGATCCTCCAGTGGCACC
 GACTGTGACAGAGGTGGGAGATGACTGGTGTATCATGAACTGGGAGCCTCCTGCATACGACGGAGCTCT
 CCAATCCTAGGATATTTTATTGAGAGGAAGAAGAAACAAGCTCCAGGTGGATGAGGCTGAATTTTGATC
 TCTGCAAAGAAACAATTTTGGCCCAAGAAGATGATTGAAGGTGGCCTATGAGGTCCGCATCTTTGC
 AGTCAATGCCATTGGCATCTCCAAGCCAGTATGCCCTCCAGGCCTTTTGTCTTTGGCTGTAACAAGC
 CCTCTACTCTTCTGACTGTGGACTCTGTCACTGACACGACTGTCACGATGAGGTGGCGCCCCCAGACC
 ACATTGGTGCAGCAGTTTAGATGGCTATGTGCTAGAGTATTGCTTTGAAGGAACTGAGGACTGGATAGT
 TGCAAACAAGATCTGATTGACAAGACGAAGTTCACCATCACAGGTCTGCCAACAGATGCAAAGATCTTT
 GTGCGTGTGAAGGCTGTTAATGCAGCTGGTCCAGCGAGCCCAAGTACTATTCTCAGCCATTCTCGTGA
 AGGAAATCATAGAACCTCCAAGATTTCGATTCCAAGACACCTGAAGCAAACCTATATCCGACAGTTGG
 AGAAGCTGTCAATCTGGTTATACCTTTCCAGGGAAAACCAAGACCAGAATTAACCTGGAAGAAGGATGGT
 GCAGAAATGATAAGAATCAAATAAACATTCGCAACTCTGAGACTGATACAATCATATTTATTAGAAAAAG
 CAGAGAGGAGCCACTCTGGGAAATATGATCTGCAAGTCAAAGTGGACAAATTCGTGGAGACCCGATCAAT
 TGACATCCAGATCATTGACCGTCCAGGTCCACCCAAAATTGTGAAGATTGAGGATGTCTGGGAGAAAAAT
 GTCGCTCTCACATGGACTCCACCAAAGGATGATGGAAATGCTGCTATCACAGGCTATACCATTGAGAAGG
 CTGACAAGAAGAGCATGGAATGGTTTACTGTGATTGAGCATTATCATCGAACCAAGTCCACCATTACTGA
 ATTTGGTCATAGGGAATGAATATTACTCCGGGTCTTTCTGAAAACATGTGTGGCCTCAGTGAGGATGCC
 ACCATGACTAAAGAGAGTGCAGTGCAGTGCAGGATGGTAAAATCTACAAAAATCCAGTGTATGAAGACT
 TTGATTTCTCAGAGGCCCATGTTTACTCAGCCTTTGGTTAACACCTATGCCATAGCTGTTTACAATGC
 CACCCTAAACTGCAGTGTGAGAGGAAATCCTAAGCCTAAAATAACCTGGATGAAAAACAAGTTGCTATT
 GTGGATGATCCAAGATACAGGATGTTACGACCAACAGGGAGTCTGTACCCTGGAAATTCGCAAGCCAGCC
 CCTATGATGGAGGCACCTACTGTGCAAAGCAGTCAATGACCTTTGGACAGTGGAGATTGAATGCAAAC
 GGAGGTGAAAGTGATATATCAAGGAGTAAATACCCTGGACAACCAAGTCTTCTGGAGGGCAGCAACAG
 TCATTGCACAATAAGGATTTT

ACGCGTACGCGGCCGCTCGAG - GFP Tag - GTTTAA

Protein Sequence:

>RG235177 representing NM_001254721
 Red=Cloning site Green=Tags(s)

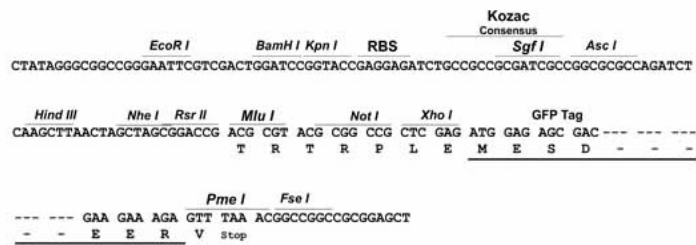
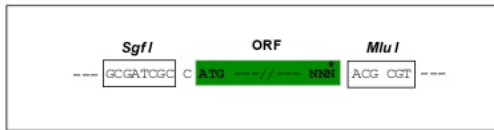
MPEPTKKEENEVPAPAPPPEEPSKEKEAGTTPAKDWTLVETPPGEEQAKQNANSQLSILFIEKPPQGGTVK
 VGEDITFIKVKAE DLLRKPTIKWFKGKWM DLASKAGKHLQLKETFERHSRVYTFEMQIIKAKDNFAGNY
 RCEVTYKDKFDSCSFDLEVHSTGTTPNIDIRSAFKRREVQKQEEEPQVDVWELLKNAKPSEYEKIAFQY
 GITDLRMLKRLKRMREEKSSAAFAKILDPAVQVDKGRVRFVVELADPKLEVWKYKNGQEIRPSTKYI
 FEHKGCQRILFINNCQMTDDSEYYVTAGDEKSTELFVREPPIMVTKQLEDTTAYCGERVELECEVSEDD
 ANVKWFKNGEEIIPGPKSRYRIRVEGKKHILIEGATKADAAEYSVMTTGGQSSAKLSVDLKLPLKILTPL
 TDQTVNLKKEICLKCEISENIPGKWTKNGLPVQESDRLKVVHKGRIHKLVIANALTEDEGDYVFAPDAYN
 VTLPAKVHVIDPPKIILDGLDADNTVTVIAGNKLRLIPIISGEPKAMWSRDKAIMEGSGRIRTESYP
 DSSTLVIDIAERDDSGVYHINLKNEAGEAHASIKVKVVDVFPDPPVAPTVEVGDDWCIMNWEPPAYDGG
 PILGYFIERKKKQSSRWMLNFDLCKETTFEPKKMIEGVAYEVRIFAVNAIGISKPSMPSRPFVPLAVTS
 PPTLLTVDSVTDTTVTRWRPPDHIGAAGLDGYVLEYCFEGTEDWIVANKDLIDKTKFTITGLPTDAKIF
 VRVKAVNAAGASEPKYYSQPILVKEIIEPPKIRIPRHLKQTYIRRVGEAVNLVIPFQKPRPELTWKKDG
 AEIDKNQINIRNSETDTIIFIRKAERSHSGKYDLQVKVDKFVETASIDIQIIDRPGPPQIVKIEDVWGEN
 VALTWTWPKDDGNAAITGYTIQKADKSMWFVIEHYHRTSATITELVIGNEYFRVFSNMCGLSEDA
 TMTKESAVIARDGKIYKNPVYEDFDFSEAMPFTQPLVNTYAIAGYNATLNCVSRGNPKPKITWMKNKVAI
 VDDPRYRMFSNQGVCTLEIRKPSPYDGGTYCCKAVNDLGTVEIECKLEVVIYQGVNTPGQPVFLEGQQQ
 SLHNKDF

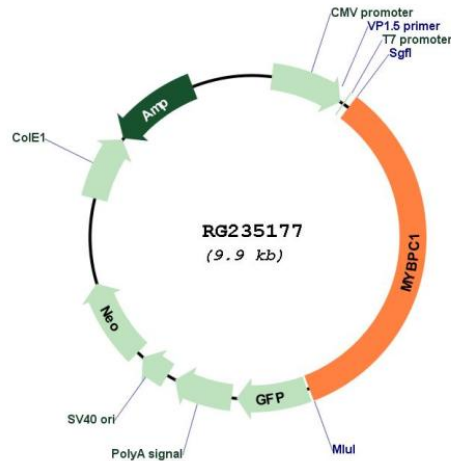
TRTRPLE - GFP Tag - V

Restriction Sites: SgfI-MluI

Cloning Scheme:

Cloning sites used for ORF Shuttling:



Plasmid Map:


ACCN: NM_001254721

ORF Size: 3381 bp

OTI Disclaimer: The molecular sequence of this clone aligns with the gene accession number as a point of reference only. However, individual transcript sequences of the same gene can differ through naturally occurring variations (e.g. polymorphisms), each with its own valid existence. This clone is substantially in agreement with the reference, but a complete review of all prevailing variants is recommended prior to use. [More info](#)

OTI Annotation: This clone was engineered to express the complete ORF with an expression tag. Expression varies depending on the nature of the gene.

Components: The ORF clone is ion-exchange column purified and shipped in a 2D barcoded Matrix tube containing 10ug of transfection-ready, dried plasmid DNA (reconstitute with 100 ul of water).

Reconstitution Method:

1. Centrifuge at 5,000xg for 5min.
2. Carefully open the tube and add 100ul of sterile water to dissolve the DNA.
3. Close the tube and incubate for 10 minutes at room temperature.
4. Briefly vortex the tube and then do a quick spin (less than 5000xg) to concentrate the liquid at the bottom.
5. Store the suspended plasmid at -20°C. The DNA is stable for at least one year from date of shipping when stored at -20°C.

RefSeq: [NM_001254721.1](#), [NP_001241650.1](#)

RefSeq Size: 3862 bp

RefSeq ORF: 3384 bp

Locus ID: 4604

UniProt ID: [Q00872](#)

Cytogenetics: 12q23.2

Gene Summary:

This gene encodes a member of the myosin-binding protein C family. Myosin-binding protein C family members are myosin-associated proteins found in the cross-bridge-bearing zone (C region) of A bands in striated muscle. The encoded protein is the slow skeletal muscle isoform of myosin-binding protein C and plays an important role in muscle contraction by recruiting muscle-type creatine kinase to myosin filaments. Mutations in this gene are associated with distal arthrogryposis type I. Alternatively spliced transcript variants encoding multiple isoforms have been observed for this gene. [provided by RefSeq, Dec 2011]