

Product datasheet for **RG235176**

DIAPH3 (NM_001258368) Human Tagged ORF Clone

Product data:

Product Type: Expression Plasmids
Product Name: DIAPH3 (NM_001258368) Human Tagged ORF Clone
Tag: TurboGFP
Symbol: DIAPH3
Synonyms: AN; AUNA1; DIA2; diap3; DRF3; mDia2; NSDAN
Mammalian Cell Selection: Neomycin
Vector: pCMV6-AC-GFP (PS100010)
E. coli Selection: Ampicillin (100 ug/mL)
ORF Nucleotide Sequence: >RG235176 representing NM_001258368
Red=Cloning site Blue=ORF Green=Tags(s)

TTTTGTAATACGACTCACTATAGGGCGGCCGGAATTCGTCGACTGGATCCGGTACCGAGGAGATCTGCC
GCC**CGATCGCC**

ATGGAACGGCACCAGCCGCGCTGCACCACCCGGCCCAAGGCTCAGCCGCTGGGACTCCCTACCCTTCT
CAGCCTCTCCGCGGCTGCCGGAAAGCAAGATGCCGCGCAGGAAGGGCCCCAACACCCTCCGCCGCC
CAGTGGCCCCGAGGAGCCTGGGGAGAAGCGCCCCAAGTTGAAGATATGAATTTAAATGAAGATAAAAAG
GCACCATTCGGGAAAAGGACTTCAGTATCAAAAAAGAAATGGTATGCAGTACATTAATACTGCTTCTA
AGACAGGAAGTCTTAAGAGAAGCCGACAGATCTCACCTCAGGAATTCATTCATGAGCTGAAAATGGGGTC
TGACAGATGAGAGACTTGTACATGCCTGGAGTCTCTCCGAGTGTCTTTGACCAGCAATCCTGTGAGTTGG
GTGGAAAGCTTTGGACATGAAGGCTTGGATTATTATTAGACATTTTGGAAAACTGATTAGTGGAAAA
TCCAAGAAAAAGTTGTAAGAAAAATCAACATAAAGTCATACAGTGTCTAAAAGCCCTGATGAATACGCA
GTATGGCTTGAAAGAATTATGAGTGAGGAGAGGAGCCTTTCTTATTGGCCAAAGCCGTGGATCCCAGA
CACCCAATATGATGACAGATGTGGTAACTTCTCTCTCGGATGCATTGTAGGGGAAGAAAGCATCC
TTGAAGAAGTTTTAGAAGCTTTAACTTCAGCTGGTGAAGAAAAAAATGACAGATTTTTTTGTATTGT
GGAAGCCCTCCGGCACAATTCAGTTCACTGCAAGTAGCTTGTATGCAGCTCATCAATGCCCTGGTTACA
TCTCCTGATGATTTGGATTTCAAGCTTACATCAGAAATGAATTTATGCGTTGTGGATTTGAAAGAGAT
TGCCAAATTTAAATGCATTAAGAATGATGGCCTGGATATCCAACCTAAAGTCTTTGATGAGCATAAAGA
AGAAGATTTGTTGAGTTATCCCATCGCCTTGAAGATATTAGAGCTGAACTTGTGAAGCATATGATGTT
TACAACATGGTGTGGAGCACAGTTAAAGAACTAGAGCAGAGGGATATTTTATTTCTATTCTTCAGCATC
TTTTGCTGATTCGAAATGATTATTTATAAGGCAACAATACTTCAAATTAATTGATGAGTGTGTATCCCA
GATTGTATTGCATAGAGATGGAATGGATCCAGACTTCACATATCGAAAAAGACTAGATTTAGATTTAACC
CAGTTTGTAGACATTTGCATAGATCAAGCAAACTAGAAGAGTTTGAAGAGAAAGCATCAGAAGTTTACA
AGAAATTTGAAAAAGAGTTTACCGACCACCAAGAACTCAGGCTGAATTGCAGAAAAAGAGGCAAAGAT
TAATGAGCTTCAAGCAGAGCTACAAGCTTTAAGTCTCAGTTTGGTGCCTTGCCAGCTGATTGTAATATT



CCTTTGCCTCCCTCTAAAGAAGGTGGAAGTGGCCACTCAGCACTTCTCCTCCGCCTCCACTGCCTTCTG
 GTGGAGGGGTGCCGCCTCCACCTCCTCCCCACCACCTCCTCCACTTCCAGGAATGCGGATGCCATTGAG
 TGGTCTGTGCCTCCACCACCTCCCCTGGGATTCTTGGAGGACAAAATTCTCCTCCTCTACCAATCCTG
 CCATTTGGGTTGAAACCAAGAAAGAAATTTAAACCTGAAATCAGCATGAGAAGATTGAATTGGTTAAAGA
 TCAGACCTCATGAAATGACTGAAACTGTTTCTGGATAAAAGTAAATGAAAAAGTATGAAAACGTGGA
 TTTGCTTTGTAACCTGAGAATACATTTTGTGGCAACAAAAGAGAGAAGAGAAGGAAGATATTGAA
 GAGAAGAAATCGATTAAGAAAAAATTAAGAAGTAAAGTAAAAAGTAAAAATGCCCAGAACCTTT
 CAATCTTCTGAGCTCTTTTCGGGTGCCATATGAGGAAATCAGAATGATGATATTGGAAGTAGATGAAAC
 ACGGTTGGCAGAGTCTATGATTCAGAAGTAAATAAAGCATCTTCTGATCAAGAGCAATTAATTCATTG
 TCTCAGTTCAGAGTGAATATAGCAACTTATGTGAACCTGAGCAGTTTGTGGTTGTGATGAGCAATGTGA
 AGAGACTACGGCCACGGCTCAGTGTCTTCTTTAAGCTTCAGTTTGAAGAGCAGGTGAACAACATCAA
 ACCTGACATCATGGCTGTGACTGCTGCGAAGAGATAAAGAAGAGCAAAAGCTTTAGCAAGTTGCTG
 GAACCTGTATTGCTAATGGGAACTACATGAATGCTGGCTCCCGAATGCTCAAACCTTCGGATTTAAC
 TTAGCTCTCTGTAAACTAAAGGACACAAAATCAGCAGATCAGAAAACAACGCTACTTCATTTCTGGT
 AGAAATATGTGAAGAGAAGTACCCTGATATACTGAATTTTGTGGATGATTTGGAACCTTTAGACAAAGCT
 AGTAAAGTCTCTGTAGAAACGCTGGAAAAGAAATTTGAGGCAGATGGGAAGGCAGCTTCAACAGCTTGAGA
 AGGAATTGGAACCTTTCCCTCCTGAGGACTTGCATGACAAGTTTGTGACAAAAGATGCCAGATTTGT
 TATCAGTGCAAAAAGAACATATGAGACACTTTCGAAGTTACACGAAAACATGGAAAAGTTATACCAGAGT
 ATAATAGGATACTATGCCATTGATGTGAAGAAGGTGTCTGTGGAAGACTTCTTACTGACCTGAATAACT
 TCAGAACCACATTCATGCAAGCAATAAAGGAGAATATCAAAAAAGAGAAGCAGAGGAAAAAGAAAAACG
 TGTCAGAATAGCTAAAGAATTAGCAGAGCGAGAAAGACTCGAACGCCAACAAAAGAAAAAGCGTTTATTA
 GAAATGAAGACTGAGGGTGTGAGACAGGAGTGTGATAATCTGCTGGAGGCTTGCAGTCCGGGGCTG
 CCTTCCGCGCAGAGAAGAAAAGGACACCCGATGCCAAAAGATGTTCCGCGAGAGTCTCAGTCCAATGCTCA
 GAGGCCTGTTCTGAAAGTTTGTAAACATGAAAATCAGAAAAGTGCAGTTGACAGAAGGGTCACGTTACAC
 TACAATATCAATTGCAACTCAACAAGGACTCCAGTCCGCAAGGAGCTTAATTATAATCTAGACACTCATA
 CGTCTACTGGGAGGATCAAGGCAGCTGAGAAGAAGGAAGCGTGAATGTAGAAAGCAACAGAAAAAGGA
 AACGGAACCTTCTGGCTCTTTTCTAAAAATGAATCAGTTCGCAAGTTGAGGCCTGCTGGCAAGATTA
 CGAGCTTTA

ACGCGTACGCGGCCGCTCGAG – GFP Tag – GTTTAA

Protein Sequence:

>RG235176 representing NM_001258368
 Red=Cloning site Green=Tags(s)

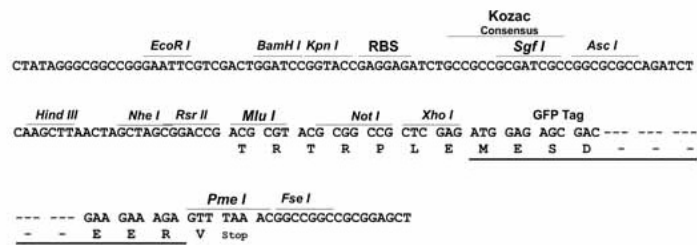
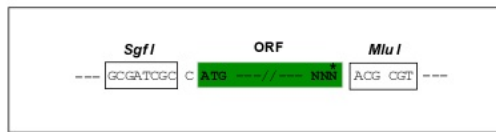
MERHQPRLLHHPAQGSAAGTPYPSSASLRGCRESKMPRRKGPQHPPPPSGPEEPGEKRPKFEDMNLNEDKK
 APLREKDFSIKKEMVMQYINTASKTGSLKRSRQISPEQFIHELKMGSADELRVTCLESLRVLSLTPVSW
 VESFGHEGLGLLLDILEKLIQEKVVKKNQHKVIQCLKALMNTQYGLERIMSEERSLSLLAKAVDPR
 HPNMMTDVVKLLSAVCIVGEESILEEVLEALTSAGEEKKIDRFCCIVEGLRHNSVQLQVACMQLINALVT
 SPDDLDFRLHIRNEFMRCGLKEILPNLKCIKNDGLDIQLKVFDEHKEEDLFELSHRLEDIRAELDEAYDV
 YNMVWSTVKETRAEGYFISILQHLIRNDYFIRQQYFKLIDECVSIIVLHRDGMDFTYRKRDLDLT
 QFVDICIDQAKLEEFEEKASELYKFEKEFTDQETQAEQKKEAKINELQAEQAFKSQFGALPADCNI
 PLPPSKEGGTGHSAALPPPPLPSGGVPPPPPPPPPPPLPGMRMPFSGPVPVPPPLGFLGGQNSPPLPIL
 PFGLPKKKEFKPEISMRRLNWLKIRPHEMTENCFWIKVNNENKYENVDLLCKLENTFCCQQKEREEEDIE
 EKKSIIKKIKELKFLDSKIAQNLIFLSSFRVPYEEIRMMILEVDETRLAESMIQNLIKHLPDQEQNLNSL
 SQFKSEYSNLCEPEQFVVVMSNVKRLRPRLSAILFKLQFEEQVNNIKPDIMAVSTACEEIKKSKFSKLL
 ELVLLMGNMAGSRNAQTFGFNLSSLCKLKDTSADQKTTLLHFLVEICEEKYPDILNFVDDLEPLDKA
 SKVSVETLEKNLRQMGRQLQLEKELETFPPPEDLHDKFVTKMSRFVISAKEYETLSKLHENMEKLYQS
 IIGYYAIDVKKVSVEFDLTDLNNFRTTFMQAIKENIKKREAEKEKRVRIAKELAERERLERQQKKRLL
 EMKTEGDETGVMNDLLEALQSGAAFRDRRKRTPMPKDVQRSLSPMSQRPVLKVCNHNQKVLTEGSRSH
 YNINCNSTRPVAKELNYNLDTHSTGRIKAAEKKEACNVESNRKKEATELLGSFSKNEVPEVEALLARL
 RAL

TRTRPLE – GFP Tag – V

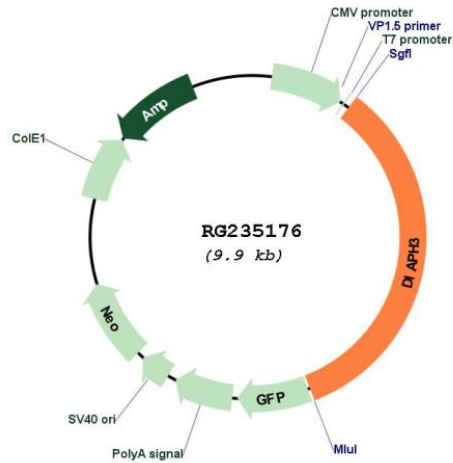
Restriction Sites: SgfI-MluI

Cloning Scheme:

Cloning sites used for ORF Shuttling:



Plasmid Map:



ACCN: NM_001258368

ORF Size: 3369 bp

OTI Disclaimer: The molecular sequence of this clone aligns with the gene accession number as a point of reference only. However, individual transcript sequences of the same gene can differ through naturally occurring variations (e.g. polymorphisms), each with its own valid existence. This clone is substantially in agreement with the reference, but a complete review of all prevailing variants is recommended prior to use. [More info](#)

OTI Annotation: This clone was engineered to express the complete ORF with an expression tag. Expression varies depending on the nature of the gene.

Components: The ORF clone is ion-exchange column purified and shipped in a 2D barcoded Matrix tube containing 10ug of transfection-ready, dried plasmid DNA (reconstitute with 100 ul of water).

Reconstitution Method:

1. Centrifuge at 5,000xg for 5min.
2. Carefully open the tube and add 100ul of sterile water to dissolve the DNA.
3. Close the tube and incubate for 10 minutes at room temperature.
4. Briefly vortex the tube and then do a quick spin (less than 5000xg) to concentrate the liquid at the bottom.
5. Store the suspended plasmid at -20°C. The DNA is stable for at least one year from date of shipping when stored at -20°C.

RefSeq: [NM_001258368.2](#)

RefSeq Size: 4602 bp

RefSeq ORF: 3372 bp

Locus ID: 81624

UniProt ID: [Q9NSV4](#)

Cytogenetics: 13q21.2

Protein Pathways: Regulation of actin cytoskeleton

Gene Summary: This gene encodes a member of the diaphanous subfamily of the formin family. Members of this family are involved in actin remodeling and regulate cell movement and adhesion. Mutations in this gene are associated with autosomal dominant auditory neuropathy 1. Multiple transcript variants encoding different isoforms have been found for this gene. [provided by RefSeq, Apr 2012]