

Product datasheet for **RG235175**

TAOK2 (NM_001252043) Human Tagged ORF Clone

Product data:

Product Type:	Expression Plasmids
Product Name:	TAOK2 (NM_001252043) Human Tagged ORF Clone
Tag:	TurboGFP
Symbol:	TAOK2
Synonyms:	MAP3K17; PSK; PSK1; PSK1-BETA; TAO1; TAO2
Mammalian Cell Selection:	Neomycin
Vector:	pCMV6-AC-GFP (PS100010)
E. coli Selection:	Ampicillin (100 ug/mL)
ORF Nucleotide Sequence:	>RG235175 representing NM_001252043 Red=Cloning site Blue=ORF Green=Tags(s)

TTTTGTAATACGACTCACTATAGGGCGGCCGGAATTCGTCGACTGGATCCGGTACCGAGGAGATCTGCC
GCC**CGATCGCC**

ATGCCAGCTGGGGCCGGGCCGGGAGCCTGAAGGACCCAGATGTGGCTGAGCTCTTCTTCAAGGATGACC
CAGAAAAGCTCTTCTGACCTCCGGAAATTGGCCATGGCAGCTTTGGAGCCGTATACTTTGCCGGGA
TGTCGGGAATAGTGAGGTGGTGGCCATCAAGAAGATGTCTACAGTGGGAAGCAGTCCAATGAGAAATGG
CAAGACATCATCAAGGAGGTGCGGTTCTACAGAAGCTCCGCATCCCAACACCATTAGTACCGGGGCT
GTTACCTGAGGGAGCACACGGCTTGGCTGGTAATGGAGTATTGCCTGGGCTCAGCTTCTGACCTTCTAGA
AGTGCACAAGAAACCCCTTCAGGAGGTAGAGATCGCAGCTGTGACCCACGGGGCGCTTCAGGGCCTGGCA
TATCTGCACTCCCAACATGATCCATAGGGATGTGAAGGCTGGAACATCCTGTGTGACAGCCAGGGT
TAGTGAAGCTAGGGGACTTTGGTCTGCGTCCATCATGGCACCTGCCAATCCTTCGTGGGCACCCATA
CTGGATGGCACCCGAGGTGATCCTGGCCATGGATGAGGGGCAGTACGATGGCAAAGTGGACGTCTGGTCC
TTGGGGATAACCTGCATCGAGCTGGCTGAACGGAAACCACCGCTTTAACATGAATGCGATGAGTGCT
TATACCACATTGCACAGAACGAATCCCCGTGCTCCAGTACGACACTGGTCTGAGTACTCCGGAATTT
TGTCGACTCCTGTCTTCAAAAAATCCCTCAAGACAGACCAACCTCAGAGGTTCTCCTGAAGCACCGCTTT
GTGCTCCGGGAGCGGCCACCCACAGTCATCATGGACCTGATCCAGAGGACCAAGGATGCCGTGCGGGAGC
TGGACAACCTGCAGTACCGCAAGATGAAGAAGATCCTGTTCCAAGAGGCACCAACGGCCCTGGTGCCGA
GGCCCCAGAGGAGGAAGAGGAGGCCGAGCCCTACATGCACCGGGCCGGGACTCTGACCAGCCTCGAGAGT
AGCCACTCAGTGCCAGCATGTCCATCAGCGCCTCCAGCCAGAGCAGCTCCGTCAACAGCCTAGCAGATG
CCTCAGACAACGAGGAAGAGGAGGAGGAGGAGGAAGAGGAGGAGGAGGAAGAAGGCCCTGAAGCCCCG
GGAGATGGCCATGATGCAGGAGGGGAGCACACAGTCACCTCTCACAGCTCCATTATCCACCGGCTGCCG
GGCTCTGACAACCTATATGATGACCCCTACCAGCCAGAGATAACCCCAAGCCCTCCAGCCGCTGCAG
CCCCAGCTCCACTTCCACCACCTTCCGCCCGCCGGGCCCTACTGCCGTAACCGAGACCACCTTTGC
CACCATCCGAACCGCCTCCCTGGTCAGCCGTGATCCAGGAGCATGAGCAGGACTCTGCGTGGCGGAG



[View online »](#)

CAGCTGAGCGGCTATAAGCGGATGCGACGACAGCACCAGAAGCAGCTGCTGGCCCTGGAGTCACGGCTGA
 GGGTGAACGGGAGGAGCACAGTGCACGGCTGCAGCGGAGCTTGAAGCGCAGCGGGCTGGCTTTGGGGC
 AGAGGCAGAAAAGCTGGCCCGCGGCACCAGGCCATAGGTGAGAAGGAGGCACGAGCTGCCAGGCCGAG
 GAGCGGAAGTTCAGCAGCACATCCTTGGGCAGCAGAAGAAGGAGCTGGCTGCCCTGCTGGAGGCACAGA
 AGCGGACCTACAACTTCGCAAGAACAGCTGAAGGAGGAGCTCCAGGAGAACCCAGCACTCCAAAGCG
 GGAGAAGCGCGAGTGGCTGCTGCGGCAGAAGGAGCAGCTCCAGCAGTCCAGGCGGAGGAGGAAGCAGGG
 CTGCTGCGGCGGACGCGCAGTACTTTGAGCTGCAGTGCAGTACAAGCGCAAGATGTTGCTGGCTC
 GGCACAGCTGGACCAGGACCTGCTGCGGAGGACCTGAACAAGAAGCAGACCCAGAAGGACTTGGAGTG
 TGCACTGCTGCTTCGGCAGCACGAGGCCACGCGGAGCTGGAGCTGCGGAGCTCCAGGCCGTGCAGCGC
 ACGCGGGCTGAGCTACCCGCTGCAGCACCAGACGGAGCTGGCAACCAGCTGGAGTACAACAAGCGGC
 GTGAGCAAGAGTTGCGGCAGAAGCATGCGGCCAGGTTGCCAGCAGCCAAAGAGCTCAAAGAGAGGAG
 CATTGTTGGCCAGGAGGAGGCTGGGACATGGAGCTTGTGGGGAAGGAGGATGAGAGTCTTGGATGAG
 GAGTTTGGCTGGTCCAGGCCAGCACTGACTCCCCTCCCTGAGGAGGAGGAAGAAGAGGAAG
 AGGGGGCTCCGATTGGGACCCCTAGGGATCCTGGAGATGGTTGCCTTCCCCGACATCCCTCCTGAACC
 CCCTCAAACACACTGAGGCCCTGCCCTGCCAGCCAGCTCCCTGGACTCCTGTCCATGGCTCCTGGCC
 GGCTCTCCTTTGCAAGTGGGGTCTCCTTGGCTCCTGCCCTCCTGCTGCTGCTGCTGCTCCATTGC
 TGGCAGCCAGGGTGGGGTGGCTGCAGGCAGCGCTGCTGGCCCTTGGAGTGGGGTGGTGGTCTGGG
 GGCTCCTACCTGCTCCTTTGTACAGCCCTGCACCTGCCCTCCAGTCTTTTCTACTCCTGGCCAGGGT
 ACCGCACTGGGGCCGTCTGGGCTGAGCTGGCGCCAGGCCTCATGGGTGTTCCCTGGGCTTGGAG
 CTGCTGGCTCTTAGCTTGGCCAGGCCTAGCTCTACCTCTGGTGGCTATGGCAGCGGGGGCAGATGGGT
 GCGGCAGCAGGGCCCCGGGTGCGCCGGGCATATCTGACTCTGGTTGCGGGTCTGCTGCGCCTGTCA
 CCCATGGCTTCCGGCCCTGCAGGCTGTGGGCTGTGGGGACCGGGTCTGTTGCACTGTACCCCA
 AAACAACAAGGATGGCTTCCGACGCGCTGCCCTCCCTGGCCCGCGGGCTAATCCCCGACCCAC
 CCAACCCATTAGCTCTGTTGGCAAGGCTTGGGTCTGTGCAAGGGCTGGAAGTGGCGTCTGGCAGCG
 GCCAGCCAGGTTTAGCATCCCCTTGGCCCGTGGCCATCCACACTGGCCAGCTGGGGCTGCTTC
 GGGGTGAACGGCCACCCGAATCCCCGGCTACTACCACGACCCAGCGCCAGCTAGGGCCCCCTGCCTC
 CCGCCAGCCACTGCCAGGACTCTAGCCGGGCGGAGGTACGCACCCGCCAGTCCCGGCCCTGCCCC
 TGGAGG

ACGCGTACGCGGCCGCTCGAG - GFP Tag - GTTTAA

Protein Sequence:

>RG235175 representing NM_001252043
 Red=Cloning site Green=Tags(s)

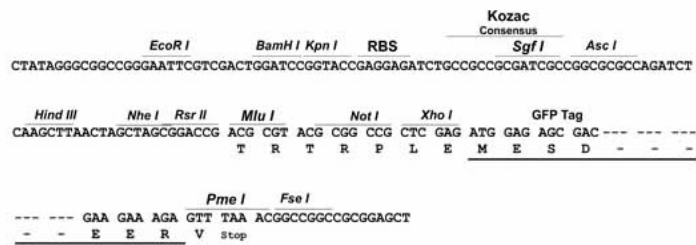
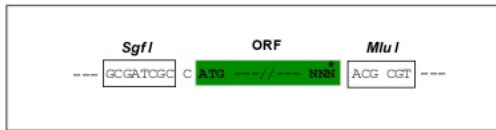
MPAGGRAGSLKDPDVAELFFKDDPEKLFSDLREIGHGSFGAVYFARDVRNSEVVAIKKMSYSYSGKQSNEKW
 QDIIKEVRFLQKLRHPNTIQYRGCYLREHTAWL VMEYCLGSASDLELVHKKPLQEVEIAAVTHGALQGLA
 YLHSHNMIHSDVKAGNILLSEPLVKLGDFGSASIMAPANSFVGTPTYWMAPEVILAMDEGQYDGKVDVWS
 LGITCIELAERKPPFLNMNAMSALYHIAQNE SPVLQSGHWSEYFRNFVDSCLQKIPQDRPTSEVLLKHRF
 VLRRPPTVIMDLIQRTKDAVRELDNLQYRKMKKILFQEAPNGPGEAPEEEEEAEPYMHRAGLTSLES
 SHSVPSMSISASSQSSVNSLADASDNEEEEEEEEEEEEEEGPEAREMAMMQEGEHTVTSHSSIIHRLP
 GSDNLYDDPYQPEITPSPLQPPAAPAPTSTSSARRRAYCRNRDHFATIRTASLVSRIQEHEQDSALRE
 QLSGYKMRQHQKQLLALLESRLRGEREHSARLQRELEAQRAGFGAEAEKLARRHQAIKEKEARAAQAE
 ERKFQQHILGQQKELAALEAQKRTYKLRKEQLKEELQENPSTPKREKAEWLLRQKEQLQQCAEEEA
 LLRRQRQYFELQCRQYKRKMLLARHSLDQDLREDLNKKQTQKDECALLLRQHEATRELELRQLQAVQR
 TRAE LRLQHQTELGNQLEYNKRREQLRQKHAQVRRQPKSLKERSIVGQEEAGTWSLWGKEDESLDE
 EFELGWVQGPALTPVPEEEEEEEGAPIGTRDPGDGCPSPDIPPEPPPHTLRPCPASQLPGLL SHGLLA
 GLSFAVGSSSGLLPLLLLLLPLLLAAQGGGLQAALLALEVGLVGLGASYL LLLCTALHLPSLFLLLAQG
 TALGAVLGLSWRRLMGVPLGLGAAWLLAWPLALPLVAMAAGGRVWRQGPVRRRISRLWLRVLLRLS
 PMAFRALQCGAVGDRGLFALYPKTNKDGFRSRLPVPGRRRNPRTTQHPLALLARVWVLCCKGNWRLAR
 ASQGLASHLPPWAHTLASWGLLRGERPTRIPRLLPRSQRQLGPPASRQPLPGTLAGRRSRTRQSRALPP
 WR

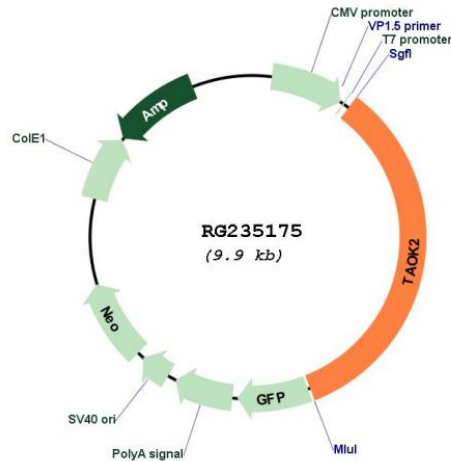
TRTRPLE - GFP Tag - V

Restriction Sites: SgfI-MluI

Cloning Scheme:

Cloning sites used for ORF Shuttling:



Plasmid Map:


ACCN: NM_001252043

ORF Size: 3366 bp

OTI Disclaimer: The molecular sequence of this clone aligns with the gene accession number as a point of reference only. However, individual transcript sequences of the same gene can differ through naturally occurring variations (e.g. polymorphisms), each with its own valid existence. This clone is substantially in agreement with the reference, but a complete review of all prevailing variants is recommended prior to use. [More info](#)

OTI Annotation: This clone was engineered to express the complete ORF with an expression tag. Expression varies depending on the nature of the gene.

Components: The ORF clone is ion-exchange column purified and shipped in a 2D barcoded Matrix tube containing 10ug of transfection-ready, dried plasmid DNA (reconstitute with 100 ul of water).

Reconstitution Method:

1. Centrifuge at 5,000xg for 5min.
2. Carefully open the tube and add 100ul of sterile water to dissolve the DNA.
3. Close the tube and incubate for 10 minutes at room temperature.
4. Briefly vortex the tube and then do a quick spin (less than 5000xg) to concentrate the liquid at the bottom.
5. Store the suspended plasmid at -20°C. The DNA is stable for at least one year from date of shipping when stored at -20°C.

RefSeq: [NM_001252043.2](#)

RefSeq Size: 4621 bp

RefSeq ORF: 3369 bp

Locus ID: 9344

UniProt ID: [Q9UL54](#)

Cytogenetics: 16p11.2

Protein Families: Druggable Genome, Protein Kinase, Transmembrane

Protein Pathways: MAPK signaling pathway

Gene Summary: This gene encodes a serine/threonine protein kinase that is involved in many different processes, including, cell signaling, microtubule organization and stability, and apoptosis. Alternatively spliced transcript variants encoding different isoforms have been described for this gene. [provided by RefSeq, Oct 2011]