

## Product datasheet for **RG235163**

### Nardilysin (NRDC) (NM\_001242361) Human Tagged ORF Clone

#### Product data:

Product Type:	Expression Plasmids
Product Name:	Nardilysin (NRDC) (NM_001242361) Human Tagged ORF Clone
Tag:	TurboGFP
Symbol:	NRDC
Synonyms:	hNRD1; hNRD2; NRD1
Mammalian Cell Selection:	Neomycin
Vector:	pCMV6-AC-GFP (PS100010)
E. coli Selection:	Ampicillin (100 ug/mL)
ORF Nucleotide Sequence:	>RG235163 representing NM_001242361 Red=Cloning site Blue=ORF Green=Tags(s)

TTTTGTAATACGACTCACTATAGGGCGGCCGGAATTCGTCGACTGGATCCGGTACCGAGGAGATCTGCC  
GCC**CGATCGCC**

ATGGAAGGTAACAGGAAATACAACAGATGATGAAGAAGAAGAGGAGGTGGAGGAAGAAGAAGATG  
ATGATGAAGATTCTGGAGCTGAAATAGAAGATGACGATGAAGAGGGTTTTGATGATGAAGATGAGTTTGA  
TGATGAACATGATGATGATCTTGATACTGAGGATAATGAATTGGAAGAATTAGAAGAGAGAGCAGAAAGCT  
AGAAAAAACTACTGAAAAACAGCAATTGCAGAGCCTGTTTTGCTGTGGTCAAAGCTGACTGATAGAC  
TGTGGTTAAGTCAACTATTCAAAAATGTCTCAACCCTGCTGGTCGAGACAAGAAATCTTTATGGGGT  
AGTTGGAGCTGAAAGCAGGTCTGCACCTGTTCAAGCATTGGCAGGATGGCAAGCGGAGGAGCAGCAGGGT  
GAAACTGACACAGTTCTGTCTGCAGCGGCTCTTTGTGTTGGAGTTGGGAGTTTCGCTGATCCAGATGACC  
TGCCGGGGCTGGCACACTTTTTGGAGCACATGGTATTCATGGGTAGTTTAAAATATCCAGATGAGAATGG  
ATTTGATGCCTTCTGAAGAAGCATGGGGTAGTGATAATGCCTCAACTGATTGTGAACGCACTGTCTTT  
CAGTTTGTGATGCCAGAGGAAGTACTTCAAGGAAGCTCTTGATAGATGGGCGCAGTTCTTCATCCACCCAC  
TAATGATCAGAGATGCAATTGACCGTGAAGTTGAAGCTGTTGATAGTGAATATCAACTTGAAGGCTTC  
TGATGCAAAACAGAAAGGAAATGTTGTTTGAAGCCTTGTAGACCTGGACATCCTATGGGAAAATTTTTT  
TGGGAAATGCTGAGACGCTCAAGCATGAGCCAAGAAAGAATAATTTGATACACATGCTAGATTGAGAG  
AATTCTGGATGCGTTACTACTCTTCTCATTACATGACTTTAGTGGTTCAATCCAAAGAAAACACTGGATAC  
TTTTGAAAAGTGGGTGACTGAAATCTTCTCAGATACCAACAATGGGTTACCCAGACAAAACCTTTGGC  
CATTTAACGGATCCATTTGACACACCAGCATTTAACAACCTTTATAGAGTTGTTCCAATCAGAAAAATTC  
ATGCTCTGACCATCACATGGGCACTTCTCCTCAACAGCAACATTACAGGGTGAAGCCACTTCATTATAT  
ATCCTGGCTGTTGGACATGAAGGCAAAGGCAGCATTCTTTCTTCTTAGGAAAAATGCTGGGCTCTT  
GCACTGTTTGGTGGAAATGGTGAGACAGGATTTGAGCAAAATTCTACTTATTCAGTGTTCAGCATTCTA  
TTACATTGACTGATGAGGGTTATGAACATTTTTATGAGGTTGCTTACACTGTCTTTCAGTATTTAAAAAT  
GCTGCAGAAGCTAGGCCAGAAAAAGAATTTTTGAAGAGATTCGAAAATTGAGGATAATGAATTCAT



[View online »](#)

TACCAAGAACAGACAGATCCAGTTGAGTATGTGGAAAACATGTGTGAGAACATGCAGCTGTACCCATTGC  
 AGGACATTCTCACTGGAGATCAGCTTCTTTTTGAATACAAGCCAGAAGTCATTGGTGAAGCCTTGAATCA  
 GCTAGTTCCTCAAAAAGCAAATCTTGTTTTACTGTCTGGTCTAATGAGGGAAAAATGTGACCTCAAGGAG  
 AAATGGTTTGAAGTCAATATAGTATAGAAGATATTGAAAACCTTTGGGCTGAACGTGGAATAGTAATT  
 TCGAATTAATCCAGATCTTCATCTCCAGCTGAAAACAAGTACATAGCCACGGACTTTACGTTGAAGGC  
 TTTTCGATTGCCCGAAAACAGAATACCCAGTTAAAATTTGAATACTCCACAAGGTTGCCTGTGGTATAAG  
 AAAGACAACAAATTCAAAATCCCCAAGCATATACGTTTCCATCTAATTTCCCGTTGATACAGAAAT  
 CTGCAGCAAAATGTGGTCCTCTTTGATATCTTTGTCAATATCCTTACGCATAACCTTGCAGAACAGCTTA  
 TGAAAGCAGATGTGGCACAGCTGGAGTATAAACTGGTAGCTGGAGAACATGGTTTAAATTATTCGAGTGAAA  
 GGATTTAACCAAACTACCTCTACTGTTTCAGCTCATTATTGACTACTTAGCTGAGTTCAATTCACAC  
 CAGCTGTCTTTACAATGATAACTGAGCAGTTGAAGAAGACCTACTTTAACATCCTCATCAAGCCCGAGAC  
 TTTGGCCAAAGATGTACGGCTTTAATCTTGAATATGCCCGTTGGTCTATGATTGACAAGTACCAGGCT  
 TTGATGGACGGCCTTCCCTTGAGTCTCTGCTGAGCTTCGCAAGAATTCAAATCCCAGCTCTTTGTGG  
 AGGGCCTGGTACAAGGAATGTACAAGCACAGAATCTATGGATTTCTGAAATATGTTGTTGACAACT  
 AAACCTCAAGCCTCTGGAGCAGGAGATGCCTGTGCAGTCCAGGTGGTAGAGCTGCCAGTGGCCACCAT  
 CTATGCAAAGTGAAGCTCTGAACAAGGTTGATGCCAAGCTCTGAAGTCACTGTGTACTACAGTCAAGGTA  
 CCAGGAGTCTAAGAGAATATACGCTTATGGAGCTGCTTGTGATGCACATGGAAGAACCTGTTTTGACTT  
 CCTTCGAACCAAGCAGACCCCTGGGTACCATGTCTACCCTACCTGATGGAACACATCCGGGATTCTAGGA  
 TTTTCTGTCACTGTGGGGACTCAGGCAACCAAAATACAATCTGAAGTTGTTGATAAGAAGATAGAAGAGT  
 TTCTTTCTAGCTTTGAGGAGAAGATTGAGAACCCTCACTGAAGAGGCATTCAACACCCAGGTCACAGCTCT  
 CATCAAGCTGAAGGAGTGTGAGGATACCCACCTTGGGGAGGAGGTGGATAGGAAGTGAAGTGAAGTGGTT  
 ACACAGCAGTACCTCTTTGACCGCTTGGCCACGAGATTGAAGCACTGAAGTCAATCTCAAAATCAGACC  
 TGGTCAACTGGTTCAAGGCCATAGAGGGCCAGGAAGTAAAATGCTCAGCGTTTCAATGTTGTTGATGAG  
 GAAGTATGAAGTGAAGAGGATGGTACCCCTTCTAGTGAGGATTCAAATCTTCTTGTGAAAGTATGATGAG  
 CTGACCTACCTGCCAACCTCTCCTCTGCTGGCAGATTGTATCATCCCCATTACTGATATCAGGGCTTTCA  
 CAACAACACTCAACCTTCTCCCCTACCATAAAATAGTCAAA

ACGCGTACGCGGCCGCTCGAG - GFP Tag - GTTTAA

**Protein Sequence:**

>RG235163 representing NM\_001242361  
 Red=Cloning site Green=Tags(s)

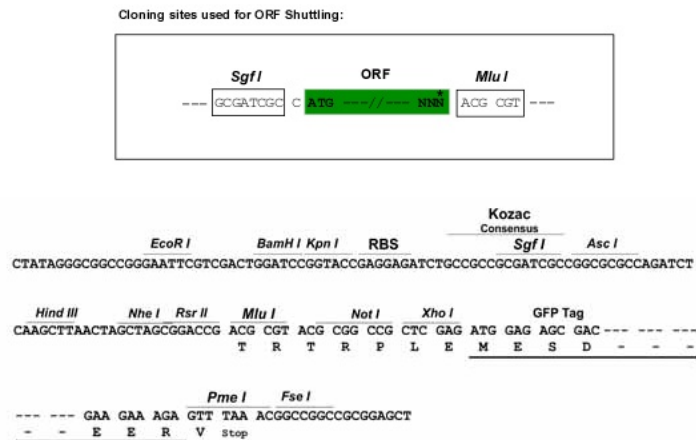
MEGKTGNTTDEEEEEVEEEEEDEDDSDGAEIEDDDEEGFDEDEFDDEHDDDLDTEDNELEEELEERAEA  
 RKKTTEKQQLQSLFLLWSKLTDRWFKSTYSKMSSTLLVETRNL YGVVGAESRSAPVQHLAGWQAEQQG  
 ETDTVL SAAALCVGVGSFADPDDL PGLAHFLEHMVFMGSLKYPDENGFDAFLKKGSDNASTDCERTVF  
 QFDVQRKYFKEALDRWAQFFIHPLMIRDAIDREVEAVDSEYQLARPSDANRKEMLFGSLARPGHPMGKFF  
 WGNAETLKHEPRKNNIDTHARLREFWMRYSSHYMTLVVQSKETLDTLEKWVTEIFSQIPNNGLPRPNFG  
 HLTDPFDTPAFNKLYRVVPIRKIHALTITWALPPQQQHYRVKPLHYISWLVGHEGKGSILSFLRKKCWAL  
 ALFGGNETGFEQNSTYSVFSISITLTDEGYEHFYEVAYTVFYQLKMLQKLGPEKRIFEEIRKIEDNEFH  
 YQEQTDPVEYVENMCENMQLYPLQDILTDGQLLFEYKPEVIGEALNQLVPQKANLVLLSGANEGKCDLKE  
 KWFGTQYSIEDIENSWAELWNSNFEINPDLHLPAENKYIATDFTLKAFDCPETEYVPKIVNTPQGCLWYK  
 KDNKFKIPKAYIRFHLISPLIQKSAANVLFDFIFVNILTHNLAEPAYEADVAQLEYKLVAGEHGLIIRVK  
 GFNHKLPLLFQLIIDYLAEFNSTPAVFTMITEQLKKTIFYNILIKPETLAKDVRLLIIEYARWSMIDKYQA  
 LMDGLSLESLLSFVKEFKSQLFVEGLVQGNVTSTESMDFLKYYVVDKLNFKPLEQEMPVQFQVVELPSGHH  
 LCKVKALNKG DANSEVT VYYQSGTRSLREYTLMELLVMHMEPCFDFLRKQTLGYHVYPTCRNTSGILG  
 FSVTVGTQATKYNSEVVDKKEIEEFLSSFEKIEIENL TEEAFNTQVTALIKLKECEDTHLGEEVDRNWNEVV  
 TQQYLFDRLAHEIEALKSFSKSDLVNWFKAHRGP GSKMLSVHVVG YGKYELEEDGTPSSEDSNSSCEVMQ  
 LTYLPTSPLLADCIIPITDIRAFTTTLNLLPYHKIVK

TRTRPLE - GFP Tag - V

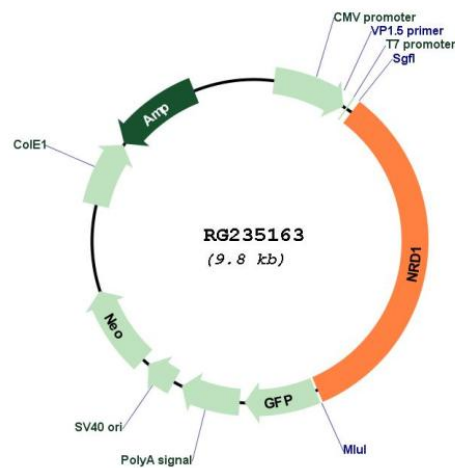
**Restriction Sites:**

Sgfl-MluI

Cloning Scheme:



Plasmid Map:



ACCN: NM\_001242361

ORF Size: 3261 bp

OTI Disclaimer: The molecular sequence of this clone aligns with the gene accession number as a point of reference only. However, individual transcript sequences of the same gene can differ through naturally occurring variations (e.g. polymorphisms), each with its own valid existence. This clone is substantially in agreement with the reference, but a complete review of all prevailing variants is recommended prior to use. [More info](#)

OTI Annotation: This clone was engineered to express the complete ORF with an expression tag. Expression varies depending on the nature of the gene.

<b>Components:</b>	The ORF clone is ion-exchange column purified and shipped in a 2D barcoded Matrix tube containing 10ug of transfection-ready, dried plasmid DNA (reconstitute with 100 ul of water).
<b>Reconstitution Method:</b>	<ol style="list-style-type: none"><li>1. Centrifuge at 5,000xg for 5min.</li><li>2. Carefully open the tube and add 100ul of sterile water to dissolve the DNA.</li><li>3. Close the tube and incubate for 10 minutes at room temperature.</li><li>4. Briefly vortex the tube and then do a quick spin (less than 5000xg) to concentrate the liquid at the bottom.</li><li>5. Store the suspended plasmid at -20°C. The DNA is stable for at least one year from date of shipping when stored at -20°C.</li></ol>
<b>RefSeq:</b>	<u>NM_001242361.1, NP_001229290.1</u>
<b>RefSeq Size:</b>	3435 bp
<b>RefSeq ORF:</b>	3264 bp
<b>Locus ID:</b>	4898
<b>UniProt ID:</b>	<u>O43847</u>
<b>Cytogenetics:</b>	1p32.3
<b>Protein Families:</b>	Druggable Genome, Protease
<b>Gene Summary:</b>	This gene encodes a zinc-dependent endopeptidase that cleaves peptide substrates at the N-terminus of arginine residues in dibasic moieties and is a member of the peptidase M16 family. This protein interacts with heparin-binding EGF-like growth factor and plays a role in cell migration and proliferation. Multiple transcript variants encoding different isoforms have been found for this gene. [provided by RefSeq, May 2011]