

## Product datasheet for **RG235150**

### DAAM2 (NM\_001201427) Human Tagged ORF Clone

#### Product data:

Product Type:	Expression Plasmids
Product Name:	DAAM2 (NM_001201427) Human Tagged ORF Clone
Tag:	TurboGFP
Symbol:	DAAM2
Synonyms:	dj90A20A.1
Mammalian Cell Selection:	Neomycin
Vector:	pCMV6-AC-GFP (PS100010)
E. coli Selection:	Ampicillin (100 ug/mL)
ORF Nucleotide Sequence:	>RG235150 representing NM_001201427 Red=Cloning site Blue=ORF Green=Tags(s)

TTTTGTAATACGACTCACTATAGGGCGGCCGGAATTCGTCGACTGGATCCGGTACCGAGGAGATCTGCC  
GCC**CGATCGCC**

ATGGCCCCCGCAAGAGGAGCCACCATGGCCTGGGCTTCTGTGCTGCTTCGGGGCAGTGACATCCCCG  
AAATCAACCTCCGGGACAACCACCCTCTGCAGTTCATGGAGTTCTCCAGCCCCATCCCGAACGCAGAGGA  
GCTCAACATCCGCTTTCAGAGCTGGTGGATGAATTGGATCTCACTGACAAAAACCGAGAGGCTATGTTT  
GCACTGCCCTGAGAAGAAATGGCAGATCTACTGCAGCAAGAAGAAGGAGCAGGAGGCCCAACAAGC  
TGGCAACCAGCTGGCCTGACTATTACATCGACCGCATCAATTCATGGCTGCGATGCAGAGTCTGTACGC  
GTTTGATGAGGAGGAGACGGAGATGAGGAACCAAGTCGTGGAAGACCTGAAGACAGCCCTCCGGACACAG  
CCTATGAGGTTTGTGACCCGCTTATTGAGCTGGAGGGCTTGACCTGTCTGCTAAATTTCTCCGGAGCA  
TGGACCACGCCACCTGTGAGAGCCGCATCCACACCTCACTCATTGGCTGCATCAAAGCATTGATGAACAA  
CTCCCAGGGGCGGGCACATGTGCTGGCAGCCTGAGGCCATTAGTACCATAGCCAGAGCCTACGCACA  
GAGAACAGCAAGACCAAGGTGGCTGTGCTGGAGATCCTGGGTGCTGTGTGCCTCGTGCCTGGTGGCCACA  
AGAAGGTGCTGCAGGCCATGCTGCACTACCAGGTGTATGCAGCAGAGCGAACCCTCCAGACCCTGCT  
GAACGAGCTAGACCGAAGTCTGGGCCGTACCGGGATGAAGTGAATCTGAAAACAGCCATCATGTCTTTC  
ATCAATGCTGCTCAATGCTGGAGCTGGAGAGGATAATCTGGAGTTCGGCTACATCTACGGTATGAAT  
TCCTGATGCTGGGTATACAGCCTGTGATTGACAAGCTCCGCAACATGAAAATGCCATCCTGGACAAACA  
TTTAGACTTCTTCGAGATGGTGCAGGATGAGGATGACCTGGAGCTAGCCAGGAGGTTTGACATGGTCCAC  
ATCGACACCAAGAGTGCTTCCAGATGTTTGAGTTGATCCACAAGAAGCTGAAGTACACGGAGGCTACC  
CCTGCCTGCTCTGTGCTGCACCCTGCTGCAGATGCCCTACAAACGGAACGGTGGCTACTTCCAGCA  
GTGGCAGCTCCTGGACCGCATCTCCAGCAGATTGTCTCCAGGATGAGCGGGTGTGGACCCTGACCTG  
GCTCCCTGGAGAACTTCAATGTCAAGAACATCGTCAACATGCTCATCAACGAGAATGAAGTGAACAGT  
GGCGAGACCAGGCAGAGAAGTCCGAAAGAACACATGGAGCTTGTGAGCCGTCTGGAGAGGAAGGAGCG  
GGATGCGAGACAAAGACATTGGAGAAGGAAGAGATGATGCGGACGCTGAACAAAATGAAGGACAAGCTG



[View online »](#)

GCCCCGGAGTCCCAGGAGCTGCGCCAGGCTCGGGGACAAGTGGCAGAGCTGGTAGCCAGCTCAGTGAAC  
TCTCAACAGGCCCTGTATCTTCCCACCACCCCTGGGGGCCACTCACCTTGTCTTCTCAATGACAAC  
CAATGACCTGCCTCCACCCCTCCTCCTGCCCCTTGGCTGTTGTCCCCTCCCCACCACCACCCCTT  
CCTCCCGGGGACCCCGACTCCCCAGGTGCCACCTTGCCCTCGGCATGGGCCGCCCCCTCCCTCAGG  
ACCCCTACCCAGCAGTGACGTCCCACTCAGAAAAAGCGTGTCCCCAGCCTTCTACCCACTGAAGTC  
CTTCAACTGGGTGAAGCTGAATGAGGAGCGTGTCCCTGGCACCGTATGGAATGAGATTGATGACATGCAG  
GTATTTTCGATCCTGGACCTAGAGGATTTTGAAGAAGATGTTTTTTCAGCCTACCAGAGCCAGAAAGAGC  
TGGGCTCCACTGAAGACATCTACCTGGCTTCCCGCAAGGTCAAAGAGCTGTCGGTATTGATGGCCGGAG  
GGCCAAAAGTGCATCATCCTTCTTTCCAAGTTGAAGCTTTCTAACGAGGAGATCCGGCAGGCCATCTTG  
AAGATGGATGAGCAGGAGGACCTTGCTAAGGACATGCTGGAGCAGCTCCTCAAGTTCATCCAGAGAAGA  
GTGACATTGACCTCCTGGAGGAGCACAAGCATGAAATTGAGCGGATGGCCCGTGTGACCCTTCTCTA  
TGAAATGAGCAGGATTGACCACTACCAGCAGCGACTGCAAGCCCTCTTCTTCAAGAAGAAATCCAGGAG  
CGGCTGGCTGAGGCAAAGCCAAAGTGAAGCCATCCTGTTGGCCTCCCGGAGCTGGTCCGAGCAAGC  
GTCTTAGACAGATGCTAGAGTCTCCTAGCCATAGGCAACTTCATGAACAAAGGCAGCGTGGGGGCGC  
CTACGGGTTCCGGTGGCCAGCCTCAACAAGATCGCTGACACCAAGTCCAGCATCGACAGAAACATCTCT  
CTGCTCCATTACCTGATCATGATCCTGGAGAAGCATTTTCTGATATTCTAAACATGCCTTCAGAGCTGC  
AACATCTTCCAGAAGCTGCCAAAGTCAACCTAGCAGAAGTGGAGAAGGAGGTGGGCAACCTCAGGAGGGG  
CCTGAGAGCGGTGGAGGTGGAGCTGGAGTATCAGAGGCGCCAGGTACGGGAGCCAGTGACAAGTTTGT  
CCTGTCATGAGCGACTTCATCACGGTGTCCAGCTTCCAGCTTCTCCGAGCTGGAGGACCAGCTAAATGAGG  
CCAGGGACAAGTTCGCCAAGGCCCTTGTGCACTTCGGGGAGCATGACAGCAAGATGCAGCCAGACGAATT  
CTTTGGCATCTTTGATACCTTCTGAGGCTTCTCAGAGGCCCGGCAGGATCTAGAGCCATGAGGAGG  
AGGAAGGAGGAGGAGGAGCGCGGGCGCGCATGGAAGCCATGCTGAAGGAGCAGAGGGAACGTGAGCGGT  
GGCAGCGCAGCGGAAGTCTGGCTGACAGCAGCTCGCTGGAGGAGGAGGAGATTGATGACCTGGT  
GTCGGCCCTGCGCTCTGGGGAGGTCTTCGACAAGGACTTATGCAAGCTCAAGCGCAGCCGAAGCGATCA  
GGGAGCCAGGCCCTGGAAGTTACCCGGGAGCGGCAATAAACCGGCTAAATTAT

AGCGGACCGACCGTACGCGGCCGCTCGAG - GFP Tag - GTTTAA

**Protein Sequence:**

>RG235150 representing NM\_001201427

Red=Cloning site Green=Tags(s)

MAPRKRSHHGLGFLCCFGGSDIPEINLRDNLHPLQFMFSSPIPNAEELNIRFAELVDELDTLTKNREAMF  
ALPPEKKWQIYCSKKKEQEDPNKLATSWPDYYIDRINSMAAMQSLYAFDEEETEMRNQVVEDLKTALRTQ  
PMRFVTRFIELEGLTCLLNFLRSMHATCESRIHTSLIGCIKALMNSQGRAHVLAQPEAISTIAQSLRT  
ENSKTKVAVLEILGAVCLVPGGHKKVLQAMLHYQVYAAERTRFQTLNLDLDRSLGRYRDEVNLKTAIMSF  
INAVLNAGAGEDNLEFRLHLRYEFLMLGIQPVIDKLRQHENAILDKHLDFEMVRNEDDLELARRFDMVH  
IDTKSASQMFELIHKKLYTEAYPCLLSVLHHCLQMPYKRNGGYFQQWQLLDRIILQQIVLQDERGVDPDL  
APLENFNVKNIWNMLINENEVKQWRDQAEKFRKEHMELVSRLERKERECETKTLEKEEMMRTLNMKDKL  
ARESQELRQARGQVAELVAQLSELSTGPVSSPPPPGGPLTLSSMTTNDLPPPPPLPFACPPPPPPPL  
PPGGPPTPPGAPPCLGMGLPLPQDPYPSDVPPLRKKRVPQPSHPLKSFNWVWKLNEERVPGTVWNEIDDMQ  
VFRILDLEDFEKMFSAAYQRHQKELGSTEDIYLA SRKVKELSVIDGRRAQNCIILLSKLKL SNEEIRQAIL  
KMDEQEDLAKDMLLEQLLKF IPEKSDIDLLEEKHHEIERMARADRFLEYMSRIDHYQQLQALFFKKKFQE  
RLAEAKPKVEAILLASRELVRSKRLRQMLEVILAI GNFMNKGQRGGAYGFRVASLNKIADTKSSIDRNIS  
LLHYLIMILEKHFPDILNMPSELQHLPEAAKVNLAELEKEVGNLRRGLRAVEVELEYQRRQVREPSDKFV  
PVMSDFITVSSFSFSELEDQLNEARDKFAKALMHFGEHDSKMQPDEF FGI FDTFLQAFSEARQDLEAMRR  
RKEEEEERRARMEAMLKEQRERERWQRQRKVL AAGSSLEEGGEFDDLVSALRSGEVFDKDLCKLKR SRKRS  
GSQALEVTRERAINRLNY

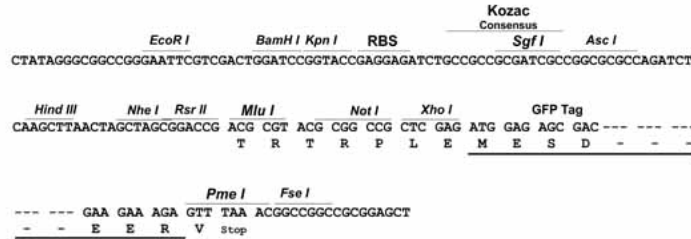
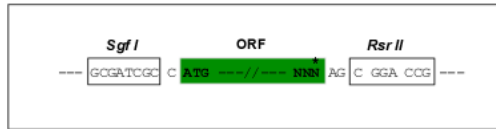
SGPTRRRLE - GFP Tag - V

**Restriction Sites:**

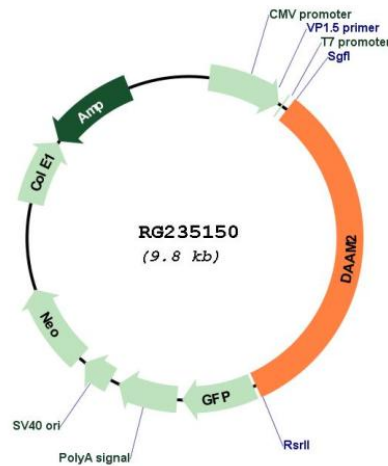
Sgfl-RsrII

Cloning Scheme:

Cloning sites used for ORF Shuttling:



Plasmid Map:



ACCN: NM\_001201427

ORF Size: 3204 bp

OTI Disclaimer: The molecular sequence of this clone aligns with the gene accession number as a point of reference only. However, individual transcript sequences of the same gene can differ through naturally occurring variations (e.g. polymorphisms), each with its own valid existence. This clone is substantially in agreement with the reference, but a complete review of all prevailing variants is recommended prior to use. [More info](#)

OTI Annotation: This clone was engineered to express the complete ORF with an expression tag. Expression varies depending on the nature of the gene.

<b>Components:</b>	The ORF clone is ion-exchange column purified and shipped in a 2D barcoded Matrix tube containing 10ug of transfection-ready, dried plasmid DNA (reconstitute with 100 ul of water).
<b>Reconstitution Method:</b>	<ol style="list-style-type: none"><li>1. Centrifuge at 5,000xg for 5min.</li><li>2. Carefully open the tube and add 100ul of sterile water to dissolve the DNA.</li><li>3. Close the tube and incubate for 10 minutes at room temperature.</li><li>4. Briefly vortex the tube and then do a quick spin (less than 5000xg) to concentrate the liquid at the bottom.</li><li>5. Store the suspended plasmid at -20°C. The DNA is stable for at least one year from date of shipping when stored at -20°C.</li></ol>
<b>RefSeq:</b>	<u>NM_001201427.2</u>
<b>RefSeq Size:</b>	6191 bp
<b>RefSeq ORF:</b>	3207 bp
<b>Locus ID:</b>	23500
<b>UniProt ID:</b>	<u>Q86T65</u>
<b>Cytogenetics:</b>	6p21.2
<b>Protein Pathways:</b>	Wnt signaling pathway
<b>Gene Summary:</b>	Key regulator of the Wnt signaling pathway, which is required for various processes during development, such as dorsal patterning, determination of left/right symmetry or myelination in the central nervous system. Acts downstream of Wnt ligands and upstream of beta-catenin (CTNNB1). Required for canonical Wnt signaling pathway during patterning in the dorsal spinal cord by promoting the aggregation of Disheveled (Dvl) complexes, thereby clustering and formation of Wnt receptor signalosomes and potentiating Wnt activity. During dorsal patterning of the spinal cord, inhibits oligodendrocytes differentiation via interaction with PIP5K1A. Also regulates non-canonical Wnt signaling pathway. Acts downstream of PITX2 in the developing gut and is required for left/right asymmetry within dorsal mesentery: affects mesenchymal condensation by lengthening cadherin-based junctions through WNT5A and non-canonical Wnt signaling, inducing polarized condensation in the left dorsal mesentery necessary to initiate gut rotation. Together with DAAM1, required for myocardial maturation and sarcomere assembly.[UniProtKB/Swiss-Prot Function]