

Product datasheet for **RG235141**

FBXW10 (NM_001267585) Human Tagged ORF Clone

Product data:

Product Type:	Expression Plasmids
Product Name:	FBXW10 (NM_001267585) Human Tagged ORF Clone
Tag:	TurboGFP
Symbol:	FBXW10
Synonyms:	Fbw10; HREP; SM2SH2; SM25H2
Mammalian Cell Selection:	Neomycin
Vector:	pCMV6-AC-GFP (PS100010)
E. coli Selection:	Ampicillin (100 ug/mL)
ORF Nucleotide Sequence:	>RG235141 representing NM_001267585 Red=Cloning site Blue=ORF Green=Tags(s)

TTTTGTAATACGACTCACTATAGGGCGGCCGGAATTCGTCGACTGGATCCGGTACCGAGGAGATCTGCC
GCC**CGATCGCC**

ATGAAAACTGGAATCAAGGCTCAAGAATGCCCCCTATTTTCGTTGTGAGAAGGGAACCGATTCCATCC
CTCTATGCCGGAAGTGTGAGACGTGTGTCTTAGCCTGGAAGATCTTCTCTACAAAGAGTGGTCTGCAG
GATCAATGACATATCACAGAGGAGGTTTCTAGTTGGCATTCTGAAGCAGTTAAATAGCTTATATTTGTTA
CACTATTTCCAAAATATCCTTCAGACCACACAGGGAAAGGATTTTCATCTATAACAGGTCCCGGATCAACC
TCAGCAAGAAAGAGGGGAAAGTTGTGAAGTCTCCTTGAACCAAATGTTGGATAAAAACAGTAGAACAGAA
GATGAAAGAGATCTTGTACTGGTTTGCGAACAGCACCCAGTGGACCAAGGCGAATTATACTCTTACTG
CTGCAGATGTGCAACCCCAAATTACTGCTCACTGCTGCCAATGTGATCAGAGTCCCTGTTTCTGAGAGAGG
AGAACAATATCTCAGGGCTCAATCAAGACATCACAGATGTGTGTTTTCCCTGAGAAAGACCACAGCTC
CAAGTCTGCGACCTCACAAAGTCTATTGGACAGCCAAAACCTCAGCACACATCCCTTCTTTGTCCAAAGCC
CCAGAAAATGAACACTTGCTTGGGGCAGCATCTAACCTGAGGAACCATGGAGGAATTCCTCCGGTGTA
TATCCGAAATGAATAGGCTGTTTTCTGGAAAAGGAGACATAACCAAGCCAGGGTACGATCCCTGCAATCT
ATTGGTTGACCTGGATGACATCAGAGACCTGTCTTCTGGGTTGAGCAAAATACCGAGACTTCATCCGTTAC
CTGCCATCCACCTCTCCAAGTACATTCTAAGAATGCTGGATAGACACACCCTGAACAAGTCCGCTCTG
TGAGCCAGCACTGGGCCCATGGCTCAACAGGTCAAGATGGACTTGTCAGCGCACGGCTTCATTAGAA
CCAGATTACCTTCTGCAAGGGTCTACACAAGAGGAATTGATCCTAATTATGCCAATAAGGTTTCTATC
CCAGTTCCATAAATGGTAGATGACGGGAAGAGCATGCGTGTGAAACATCCGAAGTGAAGCTGAGAACGA
AGAATGAGTACAACCTGTGGACTGCATACCAGAACGAGGAAACGCAGCAGGTCTGATAGAGGAGAGAAA
TGTTTTCTGTGGACCTACAATGTTTCGATTCTCTGACACGTGGGATCAAACCGAGTCCACTAT
TCCGGGGAGATCTGATAGCTGTGTCATCTAATCGAAAGATCCATCTTCTGGACATCATACAAGTAAAG
CGATACCCGTTGAATCCGAGGCCATGCTGGGAGTGTCCGGGCCCTTCTCTGTGTGAGGAGGAAAACCT
TCTCCTAAGCGGAGCTATGACCTAAGTATCAGATACTGGGATCTGAAAAGTGGGTTTGCACACGAATC



[View online >](#)

TTCGGTGGTACCAGGGGACTATCACTTGCATGGACTTGTGTAAGAACAGGCTCGTATCTGGAGGAAGAG
 ATTGCCAGGTAAGATATGGGATGTAGACACAGGGAAGTGCCTGAAGACGTTTAGACACAAAAGCCCAT
 CTTGGCCACCAGGATCAATGATACCTACATTGTGAGCAGCTGTGAGCGAGGGCTGGTAAAGTGTGGCAC
 ATTGCCATGGCCAGTTGGTAAAGACTCTCAGTGGCCATGAGGGAGCCGTGAAATGCCTGTTCTTTGACC
 AGTGGCATCTCCTCTCAGGAAGTACTGATGGCCTGGTATGGCCTGGAGCATGGTGGGAAGTACGAGCG
 CTGCCTGATGGCCTTCAAGCATCCCAAGGAGGTGCTCGACGTGTCCTTCTTCTCCTCCGGGTATCAGC
 CCTGTGCAGATGGCAAGATCCGAATTTACAATTTCTCAACGGGAAGTGTGAAGGTGTTAAAAGCCA
 ATGGCAGAGGTGATCCTGTGCTGCTTCTTTATTTCAGGGCAACAGGATGGTGGTCAACACAGAGACAA
 TGTTCTCATGTTCCAGTTTGTAGCACATAAAGTGGCAGTATGCCGTGAAAAAACGAAACAAAAGAAGAA
 AAGGAGAAAGAGGAGGAAAAAGAAGAAAATAGTCTCATGGAAATCTCTCTAAGTGAATATTCAGGTTC
 ACAGCCCAAGAGAGTCTGTATCCAGTAAACAACTGTGATCCAAGAGCTCTACCAGGCAAACTCCCAA
 GTCGCCGAGTACTCTGAAGCCGGCAAGTTCTCTTTCAGCAGTGTAAATAGAGGAAGTCAAAAGTCAAGGA
 AAGTCAAATCACCCGAAGAGATGCAGATGATGTGGAGAAAGCACAAAAACAAGGACAATTGGAAACTC
 CTGAAAACTGCCAGTCAACCAAGAAAAAGTCTTGGAAAAATCCCTATGTCACCTGACCAATTCCTCT
 GACTGTTAGCGCCTGCAGCAGCCCATAAATCCGGGGAATTTGCCTATCCCTGTAGGCCCAACAGAA
 ATTACTGATGTCTGGGGACCTTCAATTTCAATCCCAAGGAAGGTCTTGAATTTCAAAGGAAAAATCAATCC
 AACGTGCAGTTGATCGGTTGAGATTGAGCAATCCTCTATAGATGTGAAACGAACCAAGTATTCCTTGA
 AATCCAGAAACTGCAGCCCAACTTGAAGATCTCTTTCACAGTCTTAGAGTCCAGTCCACCATACCCAG
 CCCATGATTATCCGCTCCAGGTTCTCTGGCAGCTTAAAGGGTGGAGACCAAGTGACCAGTTCAATTGAAA
 GGGCTGTGTGCAGTACGGGTCCCTGACCAGTATGCAGGTCATTAACCAAAACCGCATGCTAGCTCCACA
 AGTGGGCACAGCCACCCTGTCTCTTAAGAAAGAACGGCCTCGCATCTATACAGCCCTTATCCTTTTGA
 GTGAACACTGAGTTCGTGCTGTTGACCGTGAAGGAGGAGAAGGAGCACCAGGAAGCAAGATGAAGGAAT
 ATCAGGCCAGGGAGTCCACTGGAGTGGTGTATCCAGGAAAAGTCAAGCAAGCTGCATGGATCAGGAAGAT
 CAAAGGCCTGCCTATTGATAATTTACAGGAAGCAAGGAAAAACAGCGGCCCTGAAGTTGGACAAAATGTA
 TTTATC

ACGCGTACGCGGCCGCTCGAG - GFP Tag - GTTTAA

Protein Sequence:

>RG235141 representing NM_001267585

Red=Cloning site Green=Tags(s)

MENLESRLKNAPYFRCEKGTDSIPLCRKCETCVLAWKIFSTKEWFCRINDISQRRFLVGIKQLNSLYLL
 HYFQNILQTTQKDFIYNRSRINLSKKEGKVVKSSLNQMLDKTVEQMKMEILYWFANSTQWTKANYTLLL
 LQMCNPKLLLTAANVIRVLFLEENNISGLNQDITDVCF SPEKDHSSKSATSQVYWTAKTQHTSLPLSKA
 PENEHLLGAASNPEEPWRNSLRICISEMNR LFSGKGDITKPGYDPCNLLVDLDDIRDLSSGF SKYRDFIRY
 LPIHLSKYILRMLDRHTLNKCSV SQHWAAMAQQVKMDLSAHGFIQNQITFLQGSYTRGIDPNYANKVSI
 PVPKMVDDGKSMRVKHPKWKLR TKNEYNLWTAYQNEETQQVLI EERNVFCGTYNVRILSDTWDQNRVIHY
 SGGDLIAVSSNRKIHLLDIIQVKAIPVEFRGHAGSVRALFLCEEENFLLSGSYDLSIRYWDLKSGVCTRI
 FGGHQGTITCMDLCKNRLVSGGRDCQVKVWDVDTGKCLKTFRHKDPILATRINDTYIVSSCERGLVKVWH
 IAMAQLVKTL SGHEGAVKCLFFDQWHL LSGSTDGLVMAWSMVGKYERCLMAFKHPKEVLDVSLFLFRVIS
 ACADGKIRIYNFLNGNCMKVLKANGRGDPVLSFFIQGNRMVVNTESNVLMFQFEHIKWKQYAVEKTKQKKN
 KEKEEKEENSLMEILSKCNIQVHSPRESVSSKQTVIQELLPGKPPKSRVLLKPAKFS SAVLIEELQSQG
 KSKSPRRDADDVEKAQKQGQLETPGKLP SHPKKSKWKIPMSPDQFLLTVSALQHAHNSGEFAYPCRPQTE
 ITDVWGPSISYPRKVLNFKGKSIQRAVDRLRLSNPPIDVKRTSIPLEIQKLQPNLKISLHSPRVQSTIPQ
 PMIIRSRFSGSLKGGDQVTSSIERAVCSTGPLTSMQVIKPNRMLAPQVGTATLSLKKERPRIYALDPFR
 VNTEFVLLTVKEEKEHQEAKMKEYQARESTGVVDPGKVSKA AWIRKIKGLPIDNFTKQGTAAPELGQNV
 FI

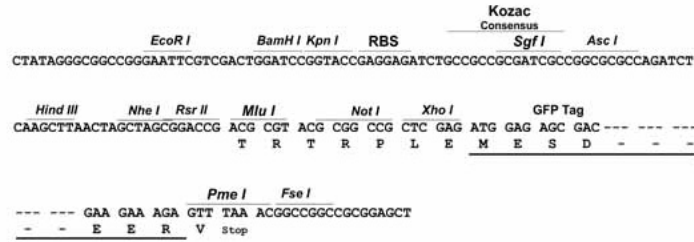
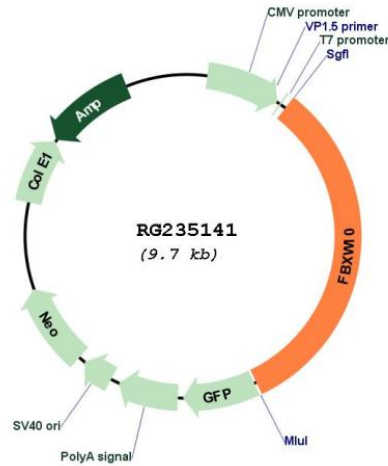
TRTRPLE - GFP Tag - V

Restriction Sites:

Sgfl-MluI

Cloning Scheme:

Cloning sites used for ORF Shutting:


Plasmid Map:


ACCN: NM_001267585

ORF Size: 3156 bp

OTI Disclaimer:	<p>Due to the inherent nature of this plasmid, standard methods to replicate additional amounts of DNA in E. coli are highly likely to result in mutations and/or rearrangements. Therefore, OriGene does not guarantee the capability to replicate this plasmid DNA. Additional amounts of DNA can be purchased from OriGene with batch-specific, full-sequence verification at a reduced cost. Please contact our customer care team at custsupport@origene.com or by calling 301.340.3188 option 3 for pricing and delivery.</p> <p>The molecular sequence of this clone aligns with the gene accession number as a point of reference only. However, individual transcript sequences of the same gene can differ through naturally occurring variations (e.g. polymorphisms), each with its own valid existence. This clone is substantially in agreement with the reference, but a complete review of all prevailing variants is recommended prior to use. More info</p>
OTI Annotation:	<p>This clone was engineered to express the complete ORF with an expression tag. Expression varies depending on the nature of the gene.</p>
Components:	<p>The ORF clone is ion-exchange column purified and shipped in a 2D barcoded Matrix tube containing 10ug of transfection-ready, dried plasmid DNA (reconstitute with 100 ul of water).</p>
Reconstitution Method:	<ol style="list-style-type: none">1. Centrifuge at 5,000xg for 5min.2. Carefully open the tube and add 100ul of sterile water to dissolve the DNA.3. Close the tube and incubate for 10 minutes at room temperature.4. Briefly vortex the tube and then do a quick spin (less than 5000xg) to concentrate the liquid at the bottom.5. Store the suspended plasmid at -20°C. The DNA is stable for at least one year from date of shipping when stored at -20°C.
RefSeq:	NM_001267585.2
RefSeq Size:	3452 bp
RefSeq ORF:	3159 bp
Locus ID:	10517
UniProt ID:	Q5XX13
Cytogenetics:	17p11.2
Gene Summary:	<p>Members of the F-box protein family, such as FBXW10, are characterized by an approximately 40-amino acid F-box motif. SCF complexes, formed by SKP1 (MIM 601434), cullin (see CUL1; MIM 603134), and F-box proteins, act as protein-ubiquitin ligases. F-box proteins interact with SKP1 through the F box, and they interact with ubiquitination targets through other protein interaction domains (Jin et al., 2004 [PubMed 15520277]).[supplied by OMIM, Mar 2008]</p>