

Product datasheet for **RG235134**

PITRM1 (NM_001242307) Human Tagged ORF Clone

Product data:

Product Type:	Expression Plasmids
Product Name:	PITRM1 (NM_001242307) Human Tagged ORF Clone
Tag:	TurboGFP
Symbol:	PITRM1
Synonyms:	MP1; PreP
Mammalian Cell Selection:	Neomycin
Vector:	pCMV6-AC-GFP (PS100010)
E. coli Selection:	Ampicillin (100 ug/mL)
ORF Nucleotide Sequence:	>RG235134 representing NM_001242307 Red=Cloning site Blue=ORF Green=Tags(s)

TTTTGTAATACGACTCACTATAGGGCGGCCGGAATTCGTCGACTGGATCCGGTACCGAGGAGATCTGCC
GCC**CGATCGCC**

ATGTGGCGCTGCGGGCGGCAGGGCCTGTGTGTGCTGAGGCGGCTGAGCGGGACATGCACACCACA
GAGCGTGGCGATGGAACAGTAACCGGGCTGTGAGAGGGCTCTGCAGTATAAACTAGGAGACAAGATCCA
TGGATTCACCGTAAACCAGGTGACATCTGTTCCCGAGCTGTTCTGACTGCAGTGAAGCTCACCCATGAT
GACACAGGAGCCAGGTATTTACACCTGGCCAGAGAAGACACGAATAATCTGTTCCAGCGTGCAGTTCGGTA
CTACTCCCATGGACAGTACTGGTTCCTCACATTCTTGAGCATACCGTCCTTTGTGGGTCTCAGAAATA
TCCGTGCAGAGACCCTTTCTCAAATGTTGAACCGGTCCCTCTCCACGTTTCATGAACGCCCTTCACAGCT
AGTGATTACTCTGTATCCATTTCCACACAAAATCCCAAGGACTTTTCAGAATCTCCTCTCGGTGTATT
TGGATGCCACCTTTTCCCATGTTTACGCGAGCTGGATTTCTGGCAGGAAGGATGGCGGCTGGAACATGA
GAATCCGAGCGACCCCGAGCGCCTTGGTCTTTAAAGGAGTCGTCTTTAATGAGATGAAGGGAGCGTTT
ACAGACAATGAGAGGATATTCTCCAGCACCTTCAGAACAGACTTCTTCTGACCACAGTACTCAGTGG
TCTCCGGGGTGACCCACTGTGCATCCCGGAGCTTACATGGGAGCAGCTTAAGCAGTTTCATGCCACTCA
CTATCACCAAGCAATGCTAGGTTCTTCACGTACGGTAATTTCCATTAGAACAGCATCTGAAACAAATT
CAGGAGGAAGCACTGAGCAAATTCAGAAAATGAACCAAGCAGTGGTCCAGCTCAGACACCCTGGG
ACAAGCCTAGGGAATTCAGATAACATGTGGCCGGATTCTTTGCTACAGATCCCTCTAAACAAACAAC
CATCAGCGTTAGCTTCTTACCGGACATCACCGACACATTTGAAGCCTTCACATTAAGTCTTCTGTCT
TCACTCTTGACTTCTGGGCCAATTCTCCCTTTTACAAAGCCTTGATTGAATCTGGCCTTGGCACAGACT
TTTCTCTGATGTTGGATATAATGGCTACACGAGGGAGGCCTACTTTAGTGTGGCCTCCAAGGGATTGC
GGAGAAAGACATTGAGACCGTCAGAAGCCTCATAGACAGAACGATTGATGAAGTAGTTGAGAAAGGATTT
GAAGATGATCGAATTGAGGCTTTACTTCATAAAATTTGAAATACAGATGAAACATCAGTCTACCAGCTTTG
GGCTGATGCTGACATCATACATAGCTTCTGCTGGAACCATGATGGGACCTGTGGAGCTTTGAAGTT
GGGAAATCAGTTAGCTAAATTCAGACAGTGCCTGCAGGAAAATCCAAAATTTTGAAGAAAAAGTAAAA



[View online »](#)

CAGTATTTAAGAATAACCAGCATAAGCTGACTTTATCGATGAGGCCAGATGACAAGTATCACGAGAAGC
 AGGCACAGGTGGAAGCCACGAAGCTCAAGCAGAAGGTCGAGGCTCTGTCCCCGGAGACAGGCAGCAGAT
 CTACGAGAAAGGTCTAGAATTACGGAGTCAACAAAGCAAACCTCAAGATGCCTCTTGTCTGCCAGCGTTG
 AAAGTTTCCGATATTGAACCCACCATACCTGTCACAGAGTTGGACGTGGTCTGACAGCTGGAGATATCC
 CTGTTCACTGCGCCAGCCACCAATGGCATGGTGTATTTCCGGGCCTTCTCCAGCCTGAACACACT
 CCCCAGGAGCTGAGGCCCTATGTGCCCTCTTCTGCAGCGTCTCACCAGCTGGGCTGCGGCCCTTCTT
 GACTACCGGGAGCAGGCTCAGCAGATAGAATTGAAGACCGGAGGGATGAGTGCTTCTCCCCACGTGCTCC
 CCGACGACTCACACATGGACACCTACGAGCAGGTAGGTGTCTTTCTCCTCTCTGCCTGGATCGAAA
 CCTGCCAGACATGATGCAGCTATGGAGTAAATATTTAAACAACCCGTGCTTTGAAGAAGAGGAGCACTTC
 AAGGTGCTGGTGAAGATGACCGCCAGGAGCTCGCCAATGGAATTCCTGACTCTGGGCACCTGTACGCAT
 CCATCAGGGCAGGCCGACCTCAGCCCGCAGGGGACCTGCAGGAGACCTTCAGCGGGATGGATCAGGT
 GCGGCTGATGAAGAGGATTGCAGAAATGACAGATATCAAACCCATCCTGAGGAAGCTCCCGCTATCAAG
 AAACACTTGTTAAATGGTGATAATAGAGGTGTCAGTGAATGCGACTCCTCAGCAGATGCCTCAGACAG
 AAAAAGCGGTGGAAGACTTCTTAGAAGCATCGGTGCGAGTAAAAAGGAACGGAGGCCTGTGCGCCACA
 CACGGTCGAGAAACCTGTGCCAGCAGCTCTGGTGGAGATGCCACGTTCCCATGGCTCCAGGTCAAT
 AGGAAGCTGGTCAATGGAACCCACCTTCAAGCCCTGGCAGATGAAGACTCACTTCCCTGATGCCCTCCCGG
 TGAATTACGTGGGTGAATGCATCCGAACCTGCCCCACACGGACCCAGATCATGCCAGTCTTAAATCCT
 TGCACGTTTATGACTGCCAAATTTTGCATACAGAAATTCGAGAAAAAGGCGGTGCTTATGGTGGAGGC
 GCAAAACTCAGCCACAATGGGATTTTACCCTTTACTCTTACAGGGACCCAAATACAATAGAGACGCTCC
 AGTCTTTTGGGAAGGCTGTGACTGGGCTAAGTCTGAAAATTCACACAGCAAGACATCGACGAAGCCAA
 ACTTTCTGTCTTCTCAACCGTAGATGCTCCTGTGCTCCTCAGACAAAGGAATGGACCCTTCTGTAC
 GGCCTCTCGGATGAGATGAAGCAGGCCACAGAGAGCAGCTCTTGTGTGACCCAGCACAAGCTCCTGG
 CCGTGAGCGATAGATACCTCGGCACTGGGAAGAGCACACACGGCTGGCCATCTCGGACCCGAGAACC
 GAAAATTGCCAAGGCCATCCTGGATCATCAA

ACGCGTACGCGGCCGCTCGAG – GFP Tag – GTTTAA

Protein Sequence:

>RG235134 representing NM_001242307
 Red=Cloning site Green=Tags(s)

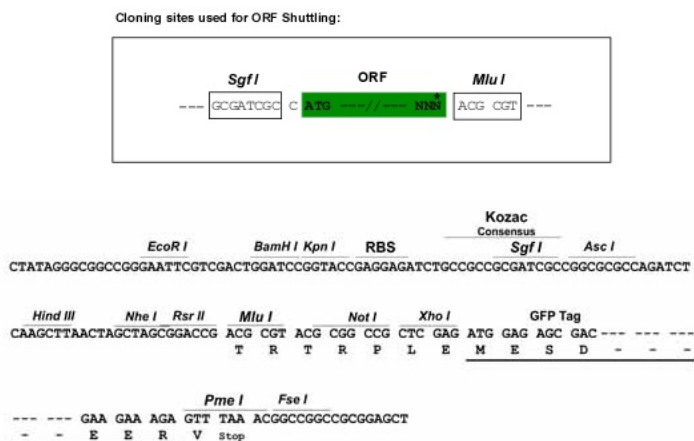
MWRCGGRQGLCVLRRLSGHAHHRWNRWNSNRACERALQYKLGDKIHGFTVNQVTSVPELFLTAVKLTHTD
 DTGARYLHLAREDTNNLFSVQFRTTPMDSTGVPHILEHTVLCGSQKYPDRDPFFKMLNRSLSFMNAFTA
 SDYTYLPFSTQNPQDFQNLQSVYLDATFFPCLRELDWFQEGWRLEHENPSDPQTPLVFKGVVFNEMKGF
 TDNERIFSQHLQNRLLPDHTYSVVSAGDPLCIPELTWEQLKQFHATHYHPSNARFFTYGNFPLEQHLKQI
 HEEALSKFQKIEPSTVVPAPQTPWDKPREFQITCGPDSFATDPSKQTTISVSFLLPDITDTEAFTLSLLS
 SLLTSGPNSPFYKALIESGLGTDSPDVGYNGYTREAYFSVGLQGIAEKDIETVRSIDRTIDEVVEKGF
 EDDRIEALLHKIEIQMKHQSTSFGLMLTSYIASCWNHDGDPVELLKLGNQLAKFRQCLQENPKFLQEKVK
 QYFKNNQHKLTLSMRPDDKYHEKQAQVEATKQKQVEALSPGDRQQIYEKLELRSQQSKPQDASCLPAL
 KVSIEPTIPVTELDVVLTAGDIPVQYCAQPTNGMVYFRAFSSLNTPPEELRPYVPLFCSVLTKLGCGLL
 DYREQAQQIQLKGGMSASPHVLPDDSHMDTYEQVGVLFSSLCCLRNLPMMLQWSEIFNPNCFEEEEHF
 KVLVKMTAQELANGIPDSGHLIASIRAGRTPAGDLQETFSGMDQVRLMKRIAEMTDIKPILRKLPRIK
 KHLLNGDNMRCSVNATPQQMPQTEKAVEDFLRSIGRSKERRPVRPHTVEKVPVSSSGGDAHVPHGSQVI
 RKLVMPEPTFKPWQMKTHFLMPFPVNYVGEICIRTVPYTPDPHASLILARLMTAKFLHTEIREKGGAYGGG
 AKLSHNGIFTLYSYRDPNTIETLQSFQKAVDWAKSGKFTQQDIDEAKLSVFSVTDAPVAPSDKGMDFLY
 GLSDEMKAHQHREQLFAVSHDKLLAVSDRYLGTGKSTHGLAILGPENPKIAKDPSWIIQ

TRTRPLE – GFP Tag – V

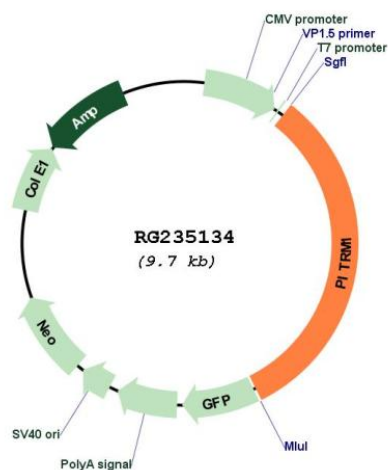
Restriction Sites:

SgfI-MluI

Cloning Scheme:



Plasmid Map:



ACCN: NM_001242307

ORF Size: 3114 bp

OTI Disclaimer: The molecular sequence of this clone aligns with the gene accession number as a point of reference only. However, individual transcript sequences of the same gene can differ through naturally occurring variations (e.g. polymorphisms), each with its own valid existence. This clone is substantially in agreement with the reference, but a complete review of all prevailing variants is recommended prior to use. [More info](#)

OTI Annotation:	This clone was engineered to express the complete ORF with an expression tag. Expression varies depending on the nature of the gene.
Components:	The ORF clone is ion-exchange column purified and shipped in a 2D barcoded Matrix tube containing 10ug of transfection-ready, dried plasmid DNA (reconstitute with 100 ul of water).
Reconstitution Method:	<ol style="list-style-type: none">1. Centrifuge at 5,000xg for 5min.2. Carefully open the tube and add 100ul of sterile water to dissolve the DNA.3. Close the tube and incubate for 10 minutes at room temperature.4. Briefly vortex the tube and then do a quick spin (less than 5000xg) to concentrate the liquid at the bottom.5. Store the suspended plasmid at -20°C. The DNA is stable for at least one year from date of shipping when stored at -20°C.
RefSeq:	NM_001242307.1 , NP_001229236.1
RefSeq Size:	3508 bp
RefSeq ORF:	3117 bp
Locus ID:	10531
UniProt ID:	Q5JRX3
Cytogenetics:	10p15.2
Protein Families:	Druggable Genome, Protease
Gene Summary:	The protein encoded by this gene is an ATP-dependent metalloprotease that degrades post-cleavage mitochondrial transit peptides. The encoded protein binds zinc and can also degrade amyloid beta A4 protein, suggesting a possible role in Alzheimer's disease. [provided by RefSeq, Dec 2016]