

Product datasheet for **RG235126**

PSD (NM_001270965) Human Tagged ORF Clone

Product data:

Product Type:	Expression Plasmids
Product Name:	PSD (NM_001270965) Human Tagged ORF Clone
Tag:	TurboGFP
Symbol:	PSD
Synonyms:	EFA6; EFA6A; PSD1; TYL
Mammalian Cell Selection:	Neomycin
Vector:	pCMV6-AC-GFP (PS100010)
E. coli Selection:	Ampicillin (100 ug/mL)
ORF Nucleotide Sequence:	>RG235126 representing NM_001270965 Red=Cloning site Blue=ORF Green=Tags(s)

TTTTGTAATACGACTCACTATAGGGCGCCGGGAATTCGTCGACTGGATCCGGTACCGAGGAGATCTGCC
GCC**CGATCGCC**

ATGGCCAGGGTGCCATGCGTCTGCTCGGAAGGCGACTGTGCCATCTCCCACCACGATGCCACGCC
GCTGGCTCCCCGAAGGCCGGTGCCCCAGAGCCCCAGCCAGCATGTATGGCAGCACAGGCTCCTTGCT
ACGGCGAGTGGCAGGTCCAGGTCTCGAGGCCGGAACTGGGACGTGTGACAGCACCTGTACACCTCTG
CGTGGCCCCCTCACCCGTGTGCTCCCTCACCTGGGCACCCTTTACCCACTGGGCAGCCCCAC
CCGGGGCCAGAGCTCTGTGGTCATCTCCGCTTTGTGGAGAAGGCCAGTGTGAGGCCACTGAATGGCT
ACCTGCTCCAGGGGGCTTGAGTCGGAGCTGGGATCTGGGTGGGGTTTCTCCTCCCAGGCCACCCAGCC
CTTGGGCTGGCTCCAACCGGAAGTTACGGCTGGAAGCATCCACATCAGACCCACTCCCCGCCAGAGGAG
GCTCGGCCCTACCTGGCAGCCGGAACCTTGATACATGGGCCCCAGCCCCACCCAGGTTGGAGCAGATGG
CCTTACTCCTCTCTCCCAATGGGCTGGGGGGCCCCCTGAGCGCTGGCCACACTCTTCGGAGGACCT
GCTGACTGGATTCTGAACAGGGGGATACCTGGTCTCCCCCGGAAGTCTCCTCATGCCAGA
GAATCGTAGAGCCAAATGGGAATCTTCTATGGCTCCTGGACCCCCAGCTCAGGTGCTAAGCCCC
AGAGCAGGCCCCCCATCTCACCTGGGTGGGCTCAAGCAGGGCTCTGGGTGGCTGTGGGGCGAGCA
GCCAAGTACTCCGAGACAGACTGGACACGGTGCCCTGAGGTGCTACCGGAGACTGACATCGATGAGG
TGCTGGCTGAGCGGGAGGAGGCCGACTCGGCCATCGAAAAGTCAGCCAGCTCTGAGGGCCACCAGGCAC
TGCTACCCACTGCCACAGGCCCGGCCACTCCCTGGCCCTATCCCAGCCTCGGCAGTGGAATGAG
GATGAGGACGACGATGAGGCAGGTGGGAAGAAGATGTGGACGACGAGGTGTTGAGGCCTGAAAGGG
CCCGGCCAGGGAGCCGGATGCCTCTCAAGTCACCTGTGCCCTTTCTACCTGGGACGAGCCCTCGGCTGA
TGGGCTGACTCTTTCAGTTGTGTGTTCAAGCCATCCTGGAGTCACACCGGGCCAAAGGCACCTCTAT
ACCAGCCTCGCTCGTGGAGGCTTGGCTCACCTGGCCCAACCCAGAGCCCTTCTTACCTTTGAGC
TGCTCCCCAACCCCTGCACCCCGGCCGACCCACCAGCTCCCGCCCACTTGGCCCTTTGAACCGGA
TTCTGGTACCAGCTCTGCTGCTGATGGTCTTGGACACAGAGAGGGGAGGAGGAGGCAGAGGCCAGA



GCCAAGCTGGCCCCAGGGAGGGAGCCCCCTAGTCCCTGCCACTCAGAGGACAGCCTTGGGCTGGGGGCAG
 CACCCCTTGGCAGCGAACCCCTGAGCCAGCTGGTGTCCGACTCAGACTCAGAGCTGGACAGCACAGA
 GCGGCTGGCCCTGGGAAGCACAGACACCTTGTCCAATGGGCAGAAAGCGGACCTGGAGGCTGCGCAGCGC
 CTGGCCAAGAGGCTGTACCGACTAGATGGCTTCCAGGAAGGCCGATGTGGCCCGGCACCTGGGCAAGAACA
 ATGACTTCAGCAAACCTGGTGGCTGGGGAGTACCTCAAGTCTTTGTCTTACGGGCATGACTCTGGACCA
 AGCTCTCAGGGTGTCTTGAAGGAGCTGGCCTTAATGGGTGAGACCCAGGAACGAGAGCGCGTGTGGCC
 CACTTCTCCAGCGATACTTCCAGTGAATCCTGAAGCCCTGTCTCAGAGGACGGCGCCACACAGCTGA
 CCTGTGCGCTCATGCTGCTCAACACGGATCTCCAGGCCATAACATCGGGAAGCGCATGACCTGCGGGGA
 CTTTCATCGGGAACCTGGAGGGCCTCAATGATGGCGGCGACTTCCCTAGGGAGCTGCTCAAGGCCCTGTAC
 AGCTCCATCAAGAATGAGAAGCTGCAGTGGGCCATAGACGAGGAGGAGCTGAGACGCTCTGTCTGAGT
 TGGCCGACCCCAACCCCAAGGTCAACAGCGGATCAGCGGGGCGAGTGGCAGTGGCTCCAGCCCTTCTCT
 GGACCTGACTCCCAGCCTGGGGCTGCCGTCTACAAGCACGGGGCCTGGTGCAGAAAGGTGCACGCAGAC
 CCTGACTGCAGGAAGACACCTCGGGCAAGCGGGGCTGGAAGAGCTTCCACGGGATCCTCAAGGGCATGA
 TCCTCTACCTGCAGAAGGAGGAGTACAAGCCTGGGAAGGCCCTTTCAGAGACGGAGCTCAAGAATGCCAT
 CAGCATCCACCATGCCCTGGCCACTCGTCCAGTACTACAGCAAGAGGCCCCACGTCTTCTACCTGCGC
 ACAGCTGACTGGCGGGTCTTCTCTTCCAGGCCCGAGCCTGGAGCAGATGCAGTCTGGATCACTCGCA
 TCAATGTAGTAGCCGCTATGTTCTTGCGCCCCCTTCCAGCTGCTGTTAGCTCCCAAAAGAAGTTCAG
 CCGCCCTCTCTGCCAGCGCTGCCACCCGCTCTCCAGGAGGAGCAGGTGCGGACCCACGAGGCCAAG
 CTGAAGGCCATGGCAAGTGAAGTGCAGTGCAGGAGCACCAGGGCCCGCCAGCTGGGCAAGAAGGGCCGGGCAAGG
 AGGCTGAAGAGCAGCGGCAAGGAGGCCCTACCTGGAGTTTGAGAAATCCCGCTACAGCACCTATGCAGC
 GCTGCTTCGGGTCAAGCTGAAGGCAGGCAGTGAAGAGCTGGATGCAGTGGAGGCAGCACTGGCCAGGCC
 GGGAGCACAGAGGATGGACTCCCTCCTTCTCACTCCAGTCCCTCCCTGCAGCCCAACCCCTCCAGCCAGC
 CCCGGGCTCAGCGTCACAGCTCAGAGCCTCGGCCAGGGCAGGCAGTGGCGGCGGAAGCCC

ACGCGTACGCGGCCGCTCGAG - GFP Tag - GTTTAA

Protein Sequence:

>RG235126 representing NM_001270965
 Red=Cloning site Green=Tags(s)

MAQGAMRFCEGDCAI SPPRCPRRWL PEGPVPQSPASMYGSTGSLRRVAGPGRGRELGRVTA PCTPL
 RGPSPRVAPSPWAPSSPTGQPPGAQSSVVI FRFVEKASVRPLNGLPAPGGLSRSWDLGGVSPRPPTPA
 LGPGSNRKLRL EASTSDPLPARGGALPGSRNLVHGPPAPPQVGADGLYSSLPNGLGPPERLATLFGGP
 ADTGFLNQDWTWSSPREVSSHAQRIARAKWEFFYGLDPPSSGAKPPEQAPPSPPGVGSRQSGVAVGRA
 AKYSETDLDTVPLRCYRETDIDEVLAEREEADSAIESQPSSEGGPPTAYPPAPRPGPLPGPHPSLGSNE
 DEDDDEAGGEEDVDEVEASEGARPGSRMPLKSPVPFLPGTSPSADGPDSFSCVFEAILESHRAKGTSY
 TSLASLEALASPPTQSPFFTFELPPQPPAPRPDPPAPAPLAPLEPDSGTSSAADGPWTQRGEEEEAEAR
 AKLAPGREPPSPCHSEDSLGLGAAPLGSEPLSQLVSDSDSELDSTERLALGSTDTLSNGQKADLEAAQR
 LAKRLYRLDGRKADVARHLGKNDFSKLVAGEYLKFFVFTGMTLDQALRVFLKELALMGETQERERVLA
 HFSQRYFQCNEALSSSEDGAHTLTCALMLLNTDLHGHNIGKRMTCGDFIGNLEGLNDGGDFPRELLKALY
 SSIKNEKLQWAIDEEELRRSLSELADPNPKVIKRI SGGSGSGSSPFLDLTPEPGA AAVYKHGALVRKVHAD
 PDCRKT PRGRGWKSFHGILKGMILYLQKEEYKPKALSETELKNAISIHHALATRASYSKRPHVFLR
 TADWRVFLFQAPSLEQMOSWITRINVVAAMFSAAPPFAAVSSQKFSRPLLPAAATRLSQEEQVRTHEAK
 LKAMASELREHRAAQLGKKGRGKEAEEQRQKEAYLEFEKSRYSYAALLRVKLGAGEELDAVEAALAQA
 GSTEDGLPPSHSSPSLQPKPSSQPRARHSSEPRPGAGSGRRKP

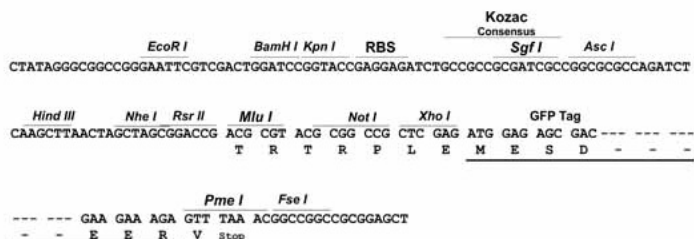
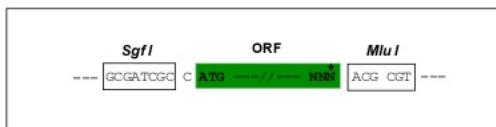
TRTRPLE - GFP Tag - V

Restriction Sites:

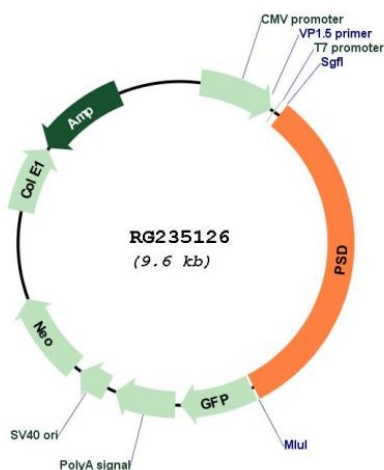
Sgfl-Mlul

Cloning Scheme:

Cloning sites used for ORF Shutting:



Plasmid Map:



ACCN: NM_001270965

ORF Size: 3072 bp

OTI Disclaimer: The molecular sequence of this clone aligns with the gene accession number as a point of reference only. However, individual transcript sequences of the same gene can differ through naturally occurring variations (e.g. polymorphisms), each with its own valid existence. This clone is substantially in agreement with the reference, but a complete review of all prevailing variants is recommended prior to use. [More info](#)

OTI Annotation:	This clone was engineered to express the complete ORF with an expression tag. Expression varies depending on the nature of the gene.
Components:	The ORF clone is ion-exchange column purified and shipped in a 2D barcoded Matrix tube containing 10ug of transfection-ready, dried plasmid DNA (reconstitute with 100 ul of water).
Reconstitution Method:	<ol style="list-style-type: none">1. Centrifuge at 5,000xg for 5min.2. Carefully open the tube and add 100ul of sterile water to dissolve the DNA.3. Close the tube and incubate for 10 minutes at room temperature.4. Briefly vortex the tube and then do a quick spin (less than 5000xg) to concentrate the liquid at the bottom.5. Store the suspended plasmid at -20°C. The DNA is stable for at least one year from date of shipping when stored at -20°C.
RefSeq:	<u>NM_001270965.1</u> , <u>NP_001257894.1</u>
RefSeq Size:	3861 bp
RefSeq ORF:	3075 bp
Locus ID:	5662
UniProt ID:	<u>A5PKW4</u>
Cytogenetics:	10q24.32
Protein Pathways:	Endocytosis
Gene Summary:	This gene encodes a Plekstrin homology and SEC7 domains-containing protein that functions as a guanine nucleotide exchange factor. The encoded protein regulates signal transduction by activating ADP-ribosylation factor 6. Alternative splicing results in multiple transcript variants. [provided by RefSeq, Aug 2012]