

## Product datasheet for **RG235108**

### **RBM10 (NM\_001204468) Human Tagged ORF Clone**

#### **Product data:**

Product Type:	Expression Plasmids
Product Name:	RBM10 (NM_001204468) Human Tagged ORF Clone
Tag:	TurboGFP
Symbol:	RBM10
Synonyms:	DXS8237E; GPATC9; GPATCH9; S1-1; TARPS; ZRANB5
Mammalian Cell Selection:	Neomycin
Vector:	pCMV6-AC-GFP (PS100010)
E. coli Selection:	Ampicillin (100 ug/mL)



[View online »](#)

**ORF Nucleotide Sequence:**

>RG235108 representing NM\_001204468  
 Red=Cloning site Blue=ORF Green=Tags(s)

TTTTGTAATACGACTCACTATAGGGCGGCCGGAATTCGTCGACTGGATCCGGTACCGAGGAGATCTGCC  
 GCC**CGGATCGCC**

ATGTCTGGGAGCCCTTCCTTGACAGCCCGGCCGAGAAGGTGAGCGTCGACGCTGGTCGTGGGGCCGGAG  
 AGTCCCTCGAGGAAGCATCACCCAGGCTGGCAGATCATGGTAGCAGCAGCGGGGGTGGCTGGGAAGTGAA  
 ACGGAGCCAGCGGCTGAGGAGGGGCCCCAGCAGCCCCGAAGGCCCTATCAGGACATGGAGTATGAAAGA  
 CGTGGTGGTCTGGTGACAGGACTGGCCGCTATGGAGCCACTGACCGCTCGCAGGATGATGGTGGGGAGA  
 ACCGCAGCCGAGACCAGACTACCGGGACATGGACTACCGTTCATATCCTCGCGAGTATGGCAGCCAGGA  
 GGGCAAGCATGACTATGACGACTCATCTGAGGAGCAGAGTGGGAGGATTCTACGAGGCCCTCCCGGGC  
 TCCGAGACTCAGCGTAGGCGGCCGGCCGACAGGCACAGCCCCACGGCCCGCCAGGCTTCCCGCGAG  
 ACGGGCAGTATCGGGACCAGGACTATCGGACCGAGCAAGGGGAGGAGGAGGAGGAGGAGGATGAGGA  
 GGAGGAGGAGAAGGCCAGTAACATCGTCACTGCTGAGGATGCTGCCACAGGCAGCCACTGAGGATGACATC  
 CGTGGCCAGCTGCAGTCGCACGGCGTGCAAGCACGGGAGGTTCCGCTGATGCGGAACAAATCTTCAGGTC  
 AGAGCCGGGGCTTCGCCTTCGTGCGATTTAGTCACTTGCAGGACGCTACACGATGGATGGAAGCCAATCA  
 GCACTCCCTCAACATCCTGGGCCAGAAGGTGTCGATGCACTACAGTGACCCCAAGCCCAAGATCAATGAG  
 GACTGGCTGTGCAATAAGTGTGGCGTCCAGAACTTCAAACGCCGAGAGAAGTGTCAAATGTGGCGTGC  
 CCAAGTCAGAGGCAGAGCAGAAGCTGCCCTCGGCACGAGGCTGGATCAGCAGACACTGCCACTGGGTGG  
 CCGGGAGCTGAGCCAGGGCTGCTTCCCTGCCGACGCCCTACCAGGCCAGGGAGTCTGGCCTCCCAA  
 GCCCTGTACAGGGCTCGGAGCCAAGCTCAGAAACGCCAATGACACCATCATTTTGCGCAACCTGAACC  
 CACACAGCACCATGGATTCCATCCTGGGGCCCTGGCACCTACGCGGTGCTGTCCCTCCAACCTGCGG  
 CGTCATAAAGGACAAGCAGACCCAACTGAACCGCGGCTTTGCCTTCATCCAGCTCTCCACCATCGTGGAG  
 GCAGCCCAGCTGCTGCAGATCCTGCAGGCCCTGCACCCACCACTCACTATCGACGCAAGACCATCAATG  
 TTGAGTTTGCCAAGGGTTCTAAGAGGGACATGGCCTCCAATGAAGGCAGTCGCATCAGTGTCTGCTCTGT  
 GGCCAGCACTGCCATTGCTGCGGCCAGTGGGCCATCTCACAGGCCTCCCAAGGTGGGGAGGGTACTCTGG  
 GCCACCTCCGAGGAGCCCGGTCGACTACAGCTACTACCAACAGGATGAGGGCTATGGCAACAGCCAGG  
 GCACAGAGTCTTCCCTCTATGCCATGGCTACCTCAAGGGCACCAAGGGCCCTGGCATCACTGGAACCAA  
 AGGGGATCCCACTGGAGCAGTCCCGAGGCTCCCTAGAGCTGGGGCCGACTCTGTGTCGATGCAGGCT  
 TTCTCTCGCGCCAGCCTGGTGTGCTCCTGGCATCTACCAACAATCAGCCGAGGCGAGCAGTAGCCAGG  
 GCACTGTGCCAACAGCCAGTGTATACCATCATGTACCCGCTGTGCTCAAATCTGAGCTCCAGAGCCC  
 TACCCATCCTAGTTCTGCTCTCCACCGGCTACCAGCCCCACTGCCAGGAATCCTACAGCCAGTACCCT  
 GTTCCCGACGTCTCTACCTACCAGTACGATGAGACCTCCGGCTACTACTATGACCCCAAGCCGGCTCT  
 ACTATGACCCCAACTCCCAGTATTACTACAATGCTCAGAGCCAGCAGTACCTGTACTGGGATGGGGAGAG  
 GCGGACCTATGTTCCCGCCCTGGAGCAGTCGGCCGACGGACATAAGGAGACAGGGGCACCCTCGAAGGAG  
 GGCAAAGAGAAGAAGGAGAAGCACAAGACCAAGACAGCTCAACAGATTGCCAAGGACATGGAACGCTGGG  
 CCCGACGTCTCAACAAACAAAAAGAAACTTCAAAAATAGCTTCCAGCCTATCAGCTCCCTGCGAGATGA  
 CGAGAGGCGGGAGTCAGCCACTGCAGATGCTGGCTATGCCATCCTCGAGAAGAAGGGAGCACTAGCCGAG  
 AGACAGCACACCAGCATGGATCTCCGAAATTGGCCAGTGACGACCGCCCAAGCCCTCCGCGAGGACTGG  
 TGGCAGCCTACAGCGGGGAGAGTGACAGTGAGGAGGAGCAGGAGCGTGGGGGCCCTGAGCGGGAGGAGAA  
 GCTCACCGACTGGCAGAAGCTGGCCTGTCTGCTCTGCCGACGCCAGTTCCCGAGCAAAGAGGCGCTCATC  
 CGGCACCAGCAGCTCTCAGGGCTCCACAAGCAAAACCTTGAGATTACCGGCGAGCCCACTTGTGAGAAA  
 ACGAGCTAGAAGCACTAGAGAAGAATGACATGGAGCAAATGAAGTACCGGGACCGTGCAGCTGAACGCGAG  
 AGAAAAGTATGGCATCCCGAGCCGCCAGAGCCCAAGAGGAGGAAGTACGGCGGCATATCCACAGCCTCT  
 GTAGACTTCGAGCAGCCTACTCGGGACGGGCTGGGCAGTGACAACATTGGCAGTCGGATGCTGCAGGCCA  
 TGGGCTGGAAGAGGGCAGCGGCTGGGCCGAAGAAGCAGGGCATTGTAAACGCTATCGAGGCCCAAC  
 ACGGGTGCGGGGCTCCGGCTGGGTGCACGGGGCAGCTCCTACGGGTACCTCAACCGAGTCTACAAG  
 GAGACTGCACAAGACAATGGTGACCCGCTTCAACGAGGCCAG

**ACGCGTACGCGGCCGCTCGAG** - GFP Tag - GTTTAA

**Protein Sequence:** >RG235108 representing NM\_001204468  
 Red=Cloning site Green=Tags(s)

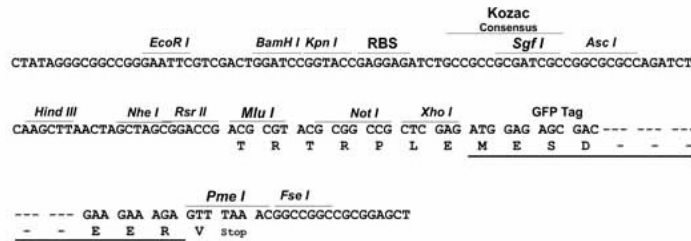
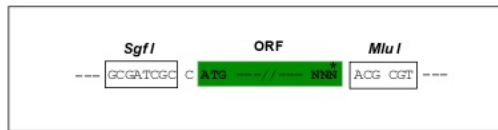
MSGSPSLTARAEKVSVDAGRGGGESLQEASPRLADHGSSSGGWVVKRSQRLRRGPSSPRRPYQDMEYER  
 RGGRGDRTGRYGATDRSQDDGGENRSRDHDIRDMYRSYPREYGSQEGKHDDDSSEEQSAEDSYEASPG  
 SETQRRRRRRHRHSPTPPPGFPRDGDYRDQDYRTEQEEEEEEEEEEEEKASNIVMLRMLPQAATEDDI  
 RGQLQSHGVQAREVRLMRNKSSGQSRGFVVEFVSHLQDATRWMEANQHSLNILGQKVMHYSDPKPKINE  
 DWLGNKCGVQNFKRREKCFKCGVPKSEAEQKPLGTRLDQQLPLGGRELSQLGLLPLQPYPQAQGVLASQ  
 ALSQGSEPSSENANDTII LRNLNPHSTMDILGALAPYAVLSSSNVRVVKDKQTLNRRGFAFIQLSTIVE  
 AAQLLQILQALHPPLTIDGKTINVEFAKSKRDMASNEGSRI SAASVASTAIAAAQWAIQSASQGGEGTW  
 ATSEPPVDYSYQDQDEGYGNSQGTESLYAHGYLKGTKGPGITGKGDPTGAGPEASLEPGADSVSMQA  
 FSRAQPGAAPGIYQSAEASSSQGTAANSQSYTIMSPAVLKSELQSPHPSALPPATSPTAQESYSQYP  
 VPDVSTYQYDETSGYYYDPQTGLYYDPNSQYYNAQSQQYLYWDGERTYVPALEQSADGHKETGAPSKE  
 GKEKKEKHKTKTAQQIAKDMERWARSLNKQENFNKSFQPISSLRDDRRESATADAGYAILEKKGALAE  
 RQHTSMDLPKLASDDRPSPRGLVAAYSGESDSEEEQERGGPEREKLTDWQKLACLRCRRQFSPKEALI  
 RHQQLSGLHKQLEIHRRAHLENELEALEKNMEQMKYRDRAAERREKYGIPEPPEPKRRKYGGISTAS  
 YDFEQPTRDGLGSDNIGSRMLQAMGWKEGSLGRKKQGI VTP IEAQTRVRSGLGARGSSYGVSTSTESYK  
 ETLHKTMVTRFNEAQ

TRTRPLE - GFP Tag - V

**Restriction Sites:** SgfI-MluI

**Cloning Scheme:**

Cloning sites used for ORF Shutting:

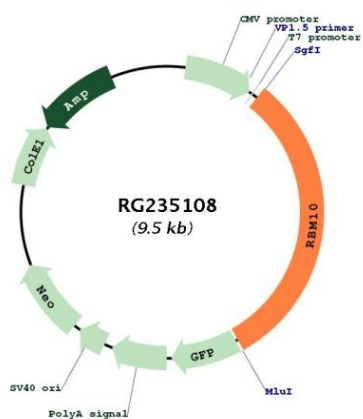


ACCN: NM\_001204468

ORF Size: 2985 bp

<b>OTI Disclaimer:</b>	The molecular sequence of this clone aligns with the gene accession number as a point of reference only. However, individual transcript sequences of the same gene can differ through naturally occurring variations (e.g. polymorphisms), each with its own valid existence. This clone is substantially in agreement with the reference, but a complete review of all prevailing variants is recommended prior to use. <a href="#">More info</a>
<b>OTI Annotation:</b>	This clone was engineered to express the complete ORF with an expression tag. Expression varies depending on the nature of the gene.
<b>Components:</b>	The ORF clone is ion-exchange column purified and shipped in a 2D barcoded Matrix tube containing 10ug of transfection-ready, dried plasmid DNA (reconstitute with 100 ul of water).
<b>Reconstitution Method:</b>	<ol style="list-style-type: none"><li>1. Centrifuge at 5,000xg for 5min.</li><li>2. Carefully open the tube and add 100ul of sterile water to dissolve the DNA.</li><li>3. Close the tube and incubate for 10 minutes at room temperature.</li><li>4. Briefly vortex the tube and then do a quick spin (less than 5000xg) to concentrate the liquid at the bottom.</li><li>5. Store the suspended plasmid at -20°C. The DNA is stable for at least one year from date of shipping when stored at -20°C.</li></ol>
<b>RefSeq:</b>	<a href="#">NM_001204468.1</a> , <a href="#">NP_001191397.1</a>
<b>RefSeq Size:</b>	3443 bp
<b>RefSeq ORF:</b>	2988 bp
<b>Locus ID:</b>	8241
<b>UniProt ID:</b>	<a href="#">P98175</a>
<b>Cytogenetics:</b>	Xp11.3
<b>Protein Families:</b>	Druggable Genome
<b>Gene Summary:</b>	This gene encodes a nuclear protein that belongs to a family proteins that contain an RNA-binding motif. The encoded protein associates with hnRNP proteins and may be involved in regulating alternative splicing. Defects in this gene are the cause of the X-linked recessive disorder, TARP syndrome. Alternate splicing results in multiple transcript variants.[provided by RefSeq, Mar 2011]

Product images:



Circular map for RG235108