

Product datasheet for **RG235072**

THBS3 (NM_001252607) Human Tagged ORF Clone

Product data:

Product Type:	Expression Plasmids
Product Name:	THBS3 (NM_001252607) Human Tagged ORF Clone
Tag:	TurboGFP
Symbol:	THBS3
Synonyms:	TSP3
Mammalian Cell Selection:	Neomycin
Vector:	pCMV6-AC-GFP (PS100010)
E. coli Selection:	Ampicillin (100 ug/mL)



[View online »](#)

ORF Nucleotide Sequence:

>RG235072 representing NM_001252607
 Red=Cloning site Blue=ORF Green=Tags(s)

TTTTGTAATACGACTCACTATAGGGCGGCCGGGAATTCGTCGACTGGATCCGGTACCGAGGAGATCTGCC
 GCC**CGGATCGCC**

ATGGAGACGCAGGAACCTCGGGGGCCCTGGCTCTTCTCCTCTTTGCTTTTTACATCTGCCAGTCAGG
 ATCTGCAGGTAATTGACCTGCTGACTGTGGCGAGTCTCGGCAGATGGTAGCTGTGGCAGAGAAGATCCG
 GACAGCCTTGCTCACTGCTGGGGACATCTACCTTTATCCACCTTCCGCCTGCCCCCAAGCAGGGTGGT
 GTCCTCTTTGGCCTCTATTCTCGCCAAGACAACACTCGATGGCTGGAGGCCTCTGTTGTAGGCAAGATCA
 ACAAACTACTGGTGCATACCAGCGGGAGGATGGCAAAGTCCACGCCGTGAACCTACAGCAAGCGGGCCT
 GGCTGATGGGCGCACACACAGTTCTCCTGCGACTCCGAGGTCCTCCAGACCCAGCCCTGCCCTACAT
 CTCTACGTGGACTGCAAACCTGGGTGACCAACATGCAGGCCTTCCAGCACTGGCCCCATTCTCCAGCGG
 AGGTGCATGGGCTGGAGATTAGGACTGGACAGAAGGCGTATTTGAGGATGCAGGGCTTTGTGGAATCTAT
 GAAAATTATTCTGGGTGGGTCCATGGCCCGGGTAGGAGCCCTGAGTGAGTGTCCATTCCAAGGGGACGAG
 TCCATCCACAGTGCAGGGGAGCAGACCAAGGCGCTGGTACCCAACTCACCTCTTCAACAGATCCCTGG
 TGGAGCTGCGGGATGATATACGAGACCAGTGAAGGAAATGTCCCTGATCCGAAACACCATTTATGGAGTG
 TCAGGTGTGCGGCTTCCATGAGCAGCGTCCCCTGACAGCCCAATCCCTGCTTCCGAGGTGTGGACTGC
 ATGGAAGTGTACGAGTACCCAGGCTACCCTGTGGGCCCTGCCCCCTGGCCTGCAGGGCAACGGCACCC
 ACTGCAGTGACATCAATGAGTGTCTCACGCTGACCCCTGTTTCCCGGGCTCCAGCTGCATCAACACCAT
 GCCCGGCTTCCACTGTGAGGCCTGTCTCGAGGGTACAAGGGCACACAGGTGTCTGGTGTGGCATTGAC
 TATGCCCGGGCCAGCAAACAGGTCTGCAATGACATCGATGAATGCAACGATGGCAAACATGGTGGCTGTG
 ACCCAAACCTCCATCTGCACCAACACTGTGGGCTCTTTCAAGTGTGGTCCCTGCCGCTGGGTTTCCCTGGG
 CAACCAGAGCCAGGGCTGCCTCCAGCCGGACCTGCCACAGCCAGCCACAGCCCTGCCACATCCAT
 GCTCACTGTCTTTGAACGCAATGGTGCAGTGTCTGCCAGTGTAACTGGGGCTGGGCTGGGAATGGGA
 ACGTGTGTGGGACTGACACAGACATCGATGGCTACCCAGACCAAGCACTGCCCTGCATGGACAACAACA
 ACACTGCAAACAGGACAACCTGCCTTTTACACCAACTCTGGGCAGGAAGATGCTGATAATGATGGTGTG
 GGGGACCAGTGTGATGATGATGCTGATGGGGATGGGATCAAGAATGTTGAGGACAACCTGCCGCTGTTCC
 CCAACAAGACCAGCAGAACCTCAGATACAGATTCATTTGGTGTGCTGTGACAATTGCCCAACGTTCC
 CAACAATGACCAGAAGGACACAGATGGCAATGGGAAGGAGATGCCTGTGACAACGACGTGGATGGGGAT
 GGCATCCCAATGGATTGGACAATTGCCCTAAAGTCCCCAACCCACTACAGACAGACAGGGATGAGGACG
 GGGTGGGAGATGCTTGCACAGCTGCCCTGAAATGAGCAATCCTACCCAGACAGATGCAGACAGCGACCT
 GGTGGGGGATGTCTGTGATACTAATGAAGACAGCGATGGGGATGGGCATCAGGACACCAAGGACAACCTGC
 CCACAGCTGCCAAATAGCTCCCAGCTGGACTCTGATAACGATGGACTTGGAGATGAGTGTGATGGGGATG
 ATGACAATGATGGCATCCAGATTATGTGCCTCCTGGTCCCGATAACTGCCGCTGGTACCCAATCCCAA
 TCAGAAGGACTCAGATGGCAATGGCGTTGGTGTGTGTGTGAGGATGACTTTGACAATGATGCTGTGGTC
 GACCCCTGGATGTGTCTCTGAAAGTGCAGAGGTAACGCTTACGGATTTTCCGGCCTATCAGACCGTCG
 TCCTGGATCCTGAGGGTGTGCTCAGATTGACCAAACTGGGTTGTGCTCAACCAGGGCATGGAATCGT
 TCAGACCATGAACAGTGACCCTGGCTTGGCAGTTGGATACACGGCCTTCAATGGTGTGGACTTTGAAGGC
 ACCTTCCATGTGAACACAGTACTGATGATGACTACGCAGGCTTTCTCTTCAAGTATCAAGACAGTGGCC
 GCTTCTACGTAGTCATGTGGAAGCAGACCAGCAGACCTACTGGCAGGCTACACCTTCCGGCGGTTGC
 CCAGCCCGGGCTGCAGCTCAAGGCACTGACATCAGTGTCTGGCCAGGTGAGCACCTCCGAAATGCCCTG
 TGGCATACTGGCCACACCCTGATCAGGTACGACTGCTGTGGACAGACCCACGAAATGTGGGCTGGCGGG
 ACAAGACCTCCTATCGCTGGCAGCTTCTGCACCGGCTCAAGTTGGCTACATTCCGGTGAAGCTCTATGA
 GGGACCCAGCTTGTGGCGGATTCTGGGGTGTGATGACACATCCATGCGAGGGGGCGCTTGGTGTGTA
 TTCTGCTTCTCCAAGAAAACATAATTTGGTCCAATCTCCAGTATCGATGCAATGACACAGTGCCTGAGG
 ACTTTGAGCCATTCGGAGGCAGCTGCTCCAGGGAAGGGTG

ACGCGTACGCGGCCGCTCGAG - GFP Tag - GTTTAA

Protein Sequence: >RG235072 representing NM_001252607
 Red=Cloning site Green=Tags(s)

```

METQELRGALALLLLCFFTSASQDLQVIDLLTVGESRQMVAVAEKIRTALLTAGDIYLLSTFRLPPKQGG
VLFGLYSRQDNTRWLEASVVGKINKVLVRYQREDGKVHAVNLQQAGLADGRHTHTVLLRLRGPSPALH
LYVDCKLGDQHAGLPALAPIPPAEVDGLEIRTGQKAYLRMQGFVESMKIILGGSMARVAGALSECFFQGDE
SIHSAGEQTKALVTQLTLFNQILVELRDDIRDQVKEMSLIRNTIMECQVCGFHEQRSHCSPNCFRGVDC
MEVYEYPGYRCGPCPPGLQGNTHCSDINECAHADPCFPGSSCINTMPGFHCEACPRGYKGTQVSGVGID
YARASKQVCNDIDECNDGNNGGCDPNSICTNTVGSFKCGPCRLGFLGNQSQGCLPARTCHSPAHSPII
AHCLFERNGAVSCQCNVWAGNGNVCCTDIDIDGYPDQALPCMDNNKHCKQDNCLLTPNSGQEDADNDGV
GDQCDDADGDGKKNVEDNCRLFPNKDDQNSDTSFGDACDNCNPNVNDQKDTDGNEGDADCNDVDGD
GIPNGLDNCVKPNPLQTDREDEGVGDACDSCPEMSNPTQTDADSDLVGDVCDTNEGSDGDGHQDTKDC
PQLPNSSQLDSDNDGLGDECDGDDNDGIPDYVPPGPDNCRVPNPNQKDSGNGVGDVCEDDFDNDVAV
DPLDVCPESAEVLTDFFRAYQTVVLDPEGDAQIDPNWVVLNQGMEIVQTMNSDPLAVGYTAFNGVDFEG
TFHVNTVTDDDYAGFLFSYQDSGRFYVMWKQTEQTYWQATPFRAVAQPLQLKAVTSVSGPGEHLRNAL
WHTGHTPDQVRLWTDPRNVGWRDKTSYRWQLLHRPQVGYIRVKLYEGPQLVADSGVIIDTSMRGGRLGV
FCFSQENI IWSNLQYRCNDTVPEDFEPFRRQLLQGRV
  
```

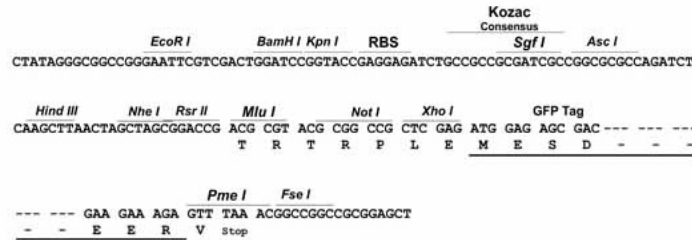
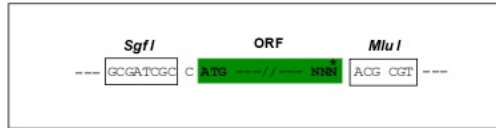
TRTRPLE - GFP Tag - V

Restriction Sites:

SgfI-MluI

Cloning Scheme:

Cloning sites used for ORF Shuttling:

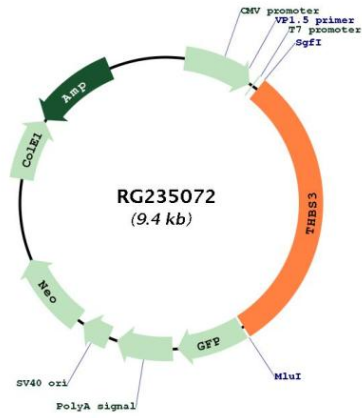


ACCN: NM_001252607

ORF Size: 2841 bp

OTI Disclaimer:	The molecular sequence of this clone aligns with the gene accession number as a point of reference only. However, individual transcript sequences of the same gene can differ through naturally occurring variations (e.g. polymorphisms), each with its own valid existence. This clone is substantially in agreement with the reference, but a complete review of all prevailing variants is recommended prior to use. More info
OTI Annotation:	This clone was engineered to express the complete ORF with an expression tag. Expression varies depending on the nature of the gene.
Components:	The ORF clone is ion-exchange column purified and shipped in a 2D barcoded Matrix tube containing 10ug of transfection-ready, dried plasmid DNA (reconstitute with 100 ul of water).
Reconstitution Method:	<ol style="list-style-type: none">1. Centrifuge at 5,000xg for 5min.2. Carefully open the tube and add 100ul of sterile water to dissolve the DNA.3. Close the tube and incubate for 10 minutes at room temperature.4. Briefly vortex the tube and then do a quick spin (less than 5000xg) to concentrate the liquid at the bottom.5. Store the suspended plasmid at -20°C. The DNA is stable for at least one year from date of shipping when stored at -20°C.
RefSeq:	NM_001252607.1 , NP_001239536.1
RefSeq Size:	3224 bp
RefSeq ORF:	2844 bp
Locus ID:	7059
UniProt ID:	P49746
Cytogenetics:	1q22
Protein Families:	Druggable Genome
Protein Pathways:	ECM-receptor interaction, Focal adhesion, TGF-beta signaling pathway
Gene Summary:	The protein encoded by this gene belongs to the thrombospondin family. Thrombospondin family members are adhesive glycoproteins that mediate cell-to-cell and cell-to-matrix interactions. This protein forms a pentameric molecule linked by a single disulfide bond. This gene shares a common promoter with metaxin 1. Alternate splicing results in coding and non-coding transcript variants. [provided by RefSeq, Nov 2011]

Product images:



Circular map for RG235072