

Product datasheet for **RG235039**

Phospholipase D2 (PLD2) (NM_001243108) Human Tagged ORF Clone

Product data:

Product Type:	Expression Plasmids
Product Name:	Phospholipase D2 (PLD2) (NM_001243108) Human Tagged ORF Clone
Tag:	TurboGFP
Symbol:	Phospholipase D2
Synonyms:	PLD1C
Mammalian Cell Selection:	Neomycin
Vector:	pCMV6-AC-GFP (PS100010)
E. coli Selection:	Ampicillin (100 ug/mL)



[View online »](#)

ORF Nucleotide Sequence:

>RG235039 representing NM_001243108
 Red=Cloning site Blue=ORF Green=Tags(s)

TTTTGTAATACGACTCACTATAGGGCGGCCGGGAATTCGTCGACTGGATCCGGTACCGAGGAGATCTGCC
 GCC**CGGATCGCC**

ATGACGGCGACCCCTGAGAGCCTTCCCCACTGGGGACGAACTGGACTCCAGCCAGCTCCAGATGGAGT
 CCGATGAGGTGGACACCCTGAAGGAGGGAGAGGCCAGCCAGCCGACCGGATGCACCCGTTTCTGGCCATCTA
 TGAGCTTCAGTCTCTGAAAGTGACCCCTTGGTGTTCGCACCTGGGGTCCCTGTACAGCCAGGTGGTG
 GGCACCGAAAGATATACCAGCGGATCCAAGGTGGGAACCTGCACTCTGTATTCTGTCCGCTTGACTCACG
 GCGACTTTTCTGGACAACCAAGAAGAAATACCGTCATTTTCAGGAGCTGCATCGGGACCTCCTGAGACA
 CAAAGTCTTGATGAGTCTGCTCCCTCTGGCTCGATTTGCCGTTGCCTATTCTCCAGCCCGAGATGCAGGC
 AACAGAGAGATGCCCTCTACCCCGGGCAGGTCCTGAGGGCTCCACCAGACATGCAGCCAGCAAACAGA
 AATACCTGGAGAATTACCTCAACCGTCTCTTGACCATGTCTTTCTATCGCAACTACCATGCCATGACAGA
 GTTCTCGAAGTCAGTCAGTGTCTTTATCCCGACTTGGGCCGAAAGGACTGGAGGGGATGATCCGG
 AAGCGCTCAGGTGGCCACCGTGTCTGGCCTCACCTGCTGTGGCCGAGACCAAGTTTGTATCGCTGGT
 CCAAGAGGTGGCTGGTGGTGAAGGACTCCTTCTGCTGTACATGTGCCTCGAGACAGGTGCCATCTCATT
 TGTTACGCTCTTTGACCTGGCTTTGAGGTGCAAGTGGGAAAAGGAGCACGGAGGCACGGCACGGCGTG
 CGGATCGATACCTCCACAGGTCCTTGATTCTCAAGTGCAGCAGCTACCGGCAGGCACGGTGGTGGGCC
 AAGAGATCACTGAGCTGGCACAGGGCCAGGCAGAGACTTCTACAGCTGCACCGGCATGACAGCTACGC
 CCCACCCCGCCTGGGACCTTGGCCCGTGGTTTGTGAATGGGGCAGGTTACTTTGCTGCTGTGGCAGAT
 GCCATCTTCGAGCTCAAGAGGAGATTTTCATCACAGACTGGTGGTTGAGTCTGAGGTTTACCTGAAGC
 GTCGGGCCCATTCAGATGACTGGAGACTGGACATTATGCTCAAGAGGAAGCGGGAGGGGTGCCGTGT
 GTCATTCTGCTGTTTAAAGAAGTGGAATTGGCCTTGGGCATCAACAGTGGCTATAGCAAGAGGGCGCTG
 ATGCTGCTGCACCCCAACATAAAGGTGATGCGTCACCCAGACCAAGTGACGTTGTGGGCCATCATGAGA
 AGCTCCTGGTGGTGGACCAAGTGGTAGCATTCTGGGGGACTGGACCTTGCCTATGGCCGCTGGGATGA
 CCTGCACTACCGACTGACTGACCTTGGAGACTCCTCTGAATCAGCTGCCTCCAGCCTCCACCCCGCGC
 CCAGACTCACCAGCCACCCAGACCTCTCTACAACCAATTCTTCTGGCTGGCAAGGACTACAGCAATC
 TTATCACAAGGACTGGGTGCAGCTGGACCGCCTTTCGAAGATTTTATTGACAGGGAGACGACCCCTCG
 GATGCCATGGCGGACGTTGGGGTGGTCCATGGCCTACCGGCCGGGACCTTGGCCGGCACTTCATC
 CAGCGCTGGAACCTCACCAAGACCACCAAGGCCAAGTACAAGACTCCACATACCCCTACCTGCTTCCCA
 AGTCTACCAGCACGGCCAATCAGCTCCCTTACACTTCCAGGAGGGCAGTGCACCACCGTACAGGTCTT
 GCGATCAGTGGACCGCTGGTCCAGCAGGGACTCTGGAGAATCCATCCTCAATGCCTACCTGCACACCATC
 AGGGAGAGCCAGCACTTCTCTACATTGAGAATCAGTTCTTATTAGCTGCTCAGATGGCGGACGGTTC
 TGAACAAGGTGGGCGATGAGATTGTGGACAGAATCCTGAAGGCCACAACAGGGGTGGTGTACCAGGT
 CTACGTGCTTTTGCCTTACTCCCTGGCTTCGAGGGTGCATCTCCACGGGCGGTGGCAACTCCATCCAG
 GCCATTCTGCACTTTACTTACAGGACCCGTGTGCTGGGGAGTATTCAATCCTGCATCGCCTTAAAGCAG
 CCATGGGGACAGCATGGCGGGACTATATTTCCATCTGCGGGCTTCGTACACACGGAGAGCTGGCGGGCA
 CCCCCTCTCGGAGCTCATCTACATCCACAGCAAGGTGCTCATCGCAGATGACCGGACAGTCACTATTGGT
 TCTGCAACATCAATGACCGGAGCTTGTGGGAAGCGGGACAGTGCAGTGGCCGTGCTGATCGAGGACA
 CAGAGACGGAACCATCCCTCATGAATGGGGCAGAGTATCAGGCGGGCAGTGTATTCTTGGAGCAAATAC
 CCGGCCAGACTTGGATCTCCGAGACCCATCTGTGATGACTTCTTCCAGTTGTGGCAAGACATGGCTGAG
 AGCAACGCCAATATCTATGAGCAGATCTCCGCTGCCTGCCATCCAATGCCACGCGTTCCCTGCGGACTC
 TCCGGGAGTACGTGGCCGTGGAGCCCTTGGCCACGGTCACTCCCCCTTGGCTCGGTCTGAGCTACCCCA
 GGTCCAGGGCCACCTGGTCCACTTCCCCCTCAAGTTCTAGAGGATGAGTCTTGTGCCCCGCTGGGT
 AGCAAGGAGGGCATGATCCCCCTAGAAGTGTGGACA

AGCGGACCGACGCGTACGCGGCCGCTCGAG - GFP Tag - GTTTAA

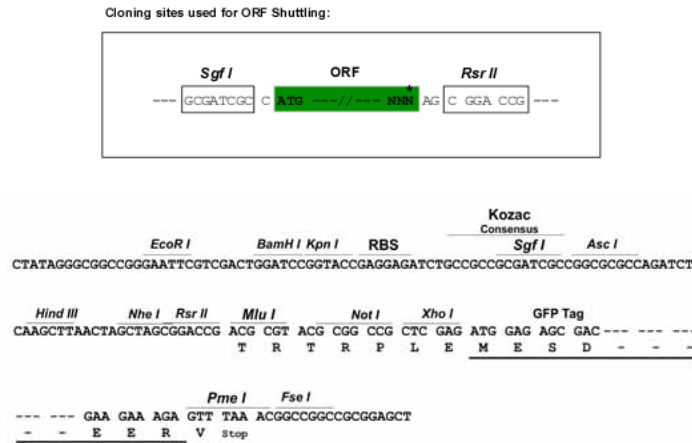
Protein Sequence: >RG235039 representing NM_001243108
 Red=Cloning site Green=Tags(s)

MTATPESLFPTGDELDSSQLQMESEVDTLKEGEDPADRMHPFLAIYELQSLKVHPLVFAPGVPVTAQVV
 GTERYTSKSGKVTCTLYSVRLTHGDFSWTTKKKYRHFQELHRDLLRHKVLMSELLPARFAVAYSPARDAG
 NREMPSLPRAGPEGSTRHAASKQKYLENYLNRLLTMSFYRNYHAMTEFLEVSQLSFIPDLGRKGLEGMIR
 KRSGGHRVPGLTCCGRDQVCYRWSKRWL VVKDSFLL YMCLETGAI SFVQLFDPGFEVQVVKRSTEARHG
 RIDTSHRSLILKCSSYRQARWVAQEITELAQGGGRDFLQLHRHDSYAPPRPGTLARWFVNGAGYFAAVAD
 AILRAQEEIFITDWLSPVEYLLKRPASDDWRDLIMLKRKAEEGVRVSIILLFKEVELALGINSYKRAL
 MLLHPNIKVMRHPDQVTLWAHHEKLLVVDQVVAFLGGLDLAYGRWDDLHYRLTDLGDSSESAASQPPTPR
 PDSPATPDL SHNQFFWLKGDYSNLITKDWVQLDRPFEDFIDRETTPRMPWRDVGVVVHGLPARDLARHFI
 QRWNFTKTTKAKYKTPYPLL PKSTSTANQLPFTLPGGQCTTVQVLRSDRWSAGTLENSILNAYLHTI
 RESQHFLYIENQFFISCS DGRVTLNKVGEIVDRILKAHKQGWCVRYVLLPLLPGFEGDISTGGGNSIQ
 AILHFTYRTL CRGEYSILHRLKAAMGTAWRDYISICGLRTHGELGGHPVSELIYIHSKVL IADDRTVIIG
 SANINDRSLLGKRDESELAVLIEDTETEPSLMNGAEYQAGSVILGANTRPDLDRDPI CDDFFQLWQDMAE
 SNANIYEQIFRCLPSNATRSLRTLREYVAVEPLATVSPPLARSEL TQVQGHVHFPLK FLEDESLLPPLG
 SKEGMIPLEVWT

SGPTRRRLE - GFP Tag - V

Restriction Sites: SgfI-RsrII

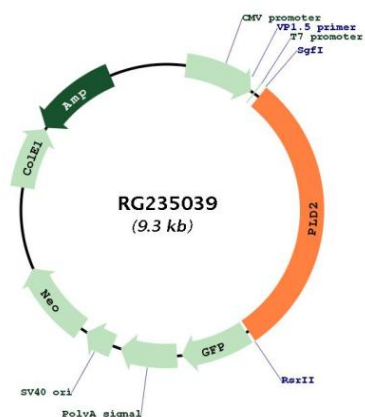
Cloning Scheme:



ACCN: NM_001243108

ORF Size:	2766 bp
OTI Disclaimer:	The molecular sequence of this clone aligns with the gene accession number as a point of reference only. However, individual transcript sequences of the same gene can differ through naturally occurring variations (e.g. polymorphisms), each with its own valid existence. This clone is substantially in agreement with the reference, but a complete review of all prevailing variants is recommended prior to use. More info
OTI Annotation:	This clone was engineered to express the complete ORF with an expression tag. Expression varies depending on the nature of the gene.
Components:	The ORF clone is ion-exchange column purified and shipped in a 2D barcoded Matrix tube containing 10ug of transfection-ready, dried plasmid DNA (reconstitute with 100 ul of water).
Reconstitution Method:	<ol style="list-style-type: none">1. Centrifuge at 5,000xg for 5min.2. Carefully open the tube and add 100ul of sterile water to dissolve the DNA.3. Close the tube and incubate for 10 minutes at room temperature.4. Briefly vortex the tube and then do a quick spin (less than 5000xg) to concentrate the liquid at the bottom.5. Store the suspended plasmid at -20°C. The DNA is stable for at least one year from date of shipping when stored at -20°C.
RefSeq:	NM_001243108.2
RefSeq Size:	3481 bp
RefSeq ORF:	2769 bp
Locus ID:	5338
UniProt ID:	O14939
Cytogenetics:	17p13.2
Protein Families:	Druggable Genome
Protein Pathways:	Endocytosis, Ether lipid metabolism, Fc gamma R-mediated phagocytosis, Glycerophospholipid metabolism, GnRH signaling pathway, Metabolic pathways
Gene Summary:	The protein encoded by this gene catalyzes the hydrolysis of phosphatidylcholine to phosphatidic acid and choline. The activity of the encoded enzyme is enhanced by phosphatidylinositol 4,5-bisphosphate and ADP-ribosylation factor-1. This protein localizes to the peripheral membrane and may be involved in cytoskeletal organization, cell cycle control, transcriptional regulation, and/or regulated secretion. Two transcript variants encoding different isoforms have been found for this gene.[provided by RefSeq, Jul 2011]

Product images:



Circular map for RG235039