

Product datasheet for **RG235014**

ITCH (NM_001257137) Human Tagged ORF Clone

Product data:

| | |
|---------------------------|--|
| Product Type: | Expression Plasmids |
| Product Name: | ITCH (NM_001257137) Human Tagged ORF Clone |
| Tag: | TurboGFP |
| Symbol: | ITCH |
| Synonyms: | ADMFD; AIF4; AIP4; NAPP1 |
| Mammalian Cell Selection: | Neomycin |
| Vector: | pCMV6-AC-GFP (PS100010) |
| E. coli Selection: | Ampicillin (100 ug/mL) |



[View online »](#)

ORF Nucleotide Sequence:

>RG235014 representing NM_001257137
 Red=Cloning site Blue=ORF Green=Tags(s)

TTTTGTAATACGACTCACTATAGGGCGGCCGGAATTCGTGACTGGATCCGGTACCGAGGAGATCTGCC
 GCC**CGGATCGCC**

ATGCTGACAGTGGATCACAACTTGGTTCAATGGGTAGCCTCACCATGAAATCACAGCTTCAGATCACTG
 TCATCTCAGCAAACTTAAGGAAAATAAGAAGAATTGGTTTGGACCAAGTCCTTACGTAGAGGTCACAGT
 AGATGGACAGTCAAAGAAGACAGAAAAATGCAACAACACAAACAGTCCCAAGTGGGAAGCAACCCCTTACA
 GTTATCGTTACCCTGTGAGTAAATTACATTTTCGTGTGTGGAGTACCAGACACTGAAATCTGATGTTT
 TGTGGGAACTGCTGCATTAGATATTTATGAAACATTAAGTCAAACAATATGAAACTTGAAGAAGTAGT
 TGTGACTTTCAGCTTGGAGGTGACAAAGACCAACAGAGACAATAGGAGACTTGTCAATTTGTCTTGAT
 GGGCTACAGTTAGAGTCTGAAGTTGTTACCAATGGTGAACACTACATGTTCCAGAAAATGGGGTTTCGCTCT
 GTTTGCCAGGCTGGAGTGCAATAGTGCATCTCGGCTCACTGCAACCTCTGCCTCCCGGTTTAAAGTGA
 TTCTCCTATCTCAGCCTCCCGAGTAGCTGGGTTTACAGGTGCTTCTCAGAATGATGATGGCTCCAGATCC
 AAGGATGAAACAAGAGTGAGCACAAATGGATCAGATGACCCTGAAGATGCAGGAGCTGGTAAAAATAGGA
 GAGTCAGTGGGAATAATTCTCCATCACTCTCAAAATGGTGGTTTTAAACCTTCTAGACCTCCAAGACCTTC
 ACGACCACCACCCACCCACGCTAGACCAGCATCTGTCAATGGTTCACCATCTGCCACTTCTGAAAGT
 GATGGGTCTAGTACAGGCTCTCTGCCCGGACAAAATAACAATAACAATACATCTGAAGGAGCAACATCTG
 GATTAATAATTCCTCTTACTATATCTGGAGGCTCAGGCCCTAGGCCATTAATCTGTAACCTCAAGCTCC
 CTTGCCACCTGGTTGGGAGCAGAGAGTGGACCAGCACGGGCGAGTTTACTATGTAGATCATGTTGAGAAA
 AGAACAAATGGGATAGACCAGAACCTACCTCCTGGCTGGGAACGGCGGGTTGACAACATCCGTCGGAACTA
 TTTATTATGTTGACCATTTCAACAAGAACAACAGTGGCAGAGGCCAACACTGGAATCCGTCGGAACTA
 TGAACAATGGCAGCTACAGCGTAGTCAGTTCAAGGAGCAATGCAGCAGTTTAAACCAGAGATTCATTTAT
 GGGAAATCAAGATTTATTTGCTACATCACAAAGTAAAGAATTTGATCCTCTTGGTCCATTGCCACCTGGAT
 GGGAGAAGAGAACAGACAGCAATGGCAGAGTATATTTCTCAACCACAACACAGCAATTACACAATGGGA
 AGACCCAGAAAGTCAAGTCAATTAATGAAAAGCCCTTACCTGAAGGTTGGGAAATGAGATTCACAGTG
 GATGGAATTCATATTTGTGGACCACAATAGAAGAACTACCACCTATATAGATCCCGCACAGGAAAAAT
 CTGCCCTAGACAATGGACCTCAGATAGCCTATGTTCCGGACTTCAAAGCAAAGGTTCAAGTATTTCCGGTT
 CTGGTGCAGCAACTGGCCATGCCACAGCACATAAAGATTACAGTGACAAGAAAAACATTGTTTGAGGAT
 TCCTTTCAACAGATAATGAGCTTCAAGTCCCAAGATCTGCGAAGACGTTTGTGGGTGATTTTCCAGGAG
 AAGAAGGTTTAGATTATGGAGGTGTAGCAAGAGAATGGTCTTTCTTTTGTACATGAAGTGTGAACCC
 AATGTATTGCCTGTTTGAATATGCAGGGGAAGGATAACTACTGCTTGCAGATAAACCCCGCTTCTTACATC
 AATCCAGATCACCTGAAATATTTTCGTTTTATTGGCAGATTTATTGCCATGGCTCTGTTCCATGGGAAAT
 TCATAGACACGGGTTTTCTTTACCATTCTATAAGCGTATCTTGAACAAACCAGTTGGACTCAAGGATTT
 AGAATCTATTGATCCAGAATTTTACAATCTCTCATCTGGGTTAAGGAAAAACAATATTGAGGAATGTGAT
 TTGGAAATGACTTCTCCGTTGACAAAGAAATTAAGGTGAAATTAAGAGTCATGATCTGAAACCTAATG
 GTGGCAATATTCTTGTAAACAGAAGAAAAATAAGAGGAATACATCAGAATGGTAGCTGAGTGGAGGTTGTC
 TCGAGGTGTTGAAGAACAGACACAAGCTTTCTTTGAAGGCTTTAATGAAATCTTCCACAGCAATTTTG
 CAATACTTTGATGCAAAGGAATTAAGAGTCTTTTATGTGGAATGCAAGAGATTGATTTGAATGACTGGC
 AAAGACATGCCATCTACCGTCATTATGCAAGGACCAGCAAAACAATCATGTGTTTTGGCAGTTTGTAA
 AGAAATTGATAATGAGAAGAGAATGAGACTTCTGCAGTTTGTACTGGAACCTGCCGATTGCCAGTAGGA
 GGATTTGCTGATCTCATGGGAGCAATGGACCACAGAAATTTGCATTGAAAAAGTTGGGAAAGAAAAAT
 GGCTACCCAGAAGTCATACCTGTTTTAATCGCCTGGACCTGCCACCATAAAGAGCTATGAGCAACTGAA
 GGAAAAGCTGTTGTTGCCATAGAAGAAACAGAAGGATTTGGACAAGAG

ACGCGTACGCGGCCGCTCGAG – GFP Tag – **GTTTAA**

Protein Sequence: >RG235014 representing NM_001257137
 Red=Cloning site Green=Tags(s)

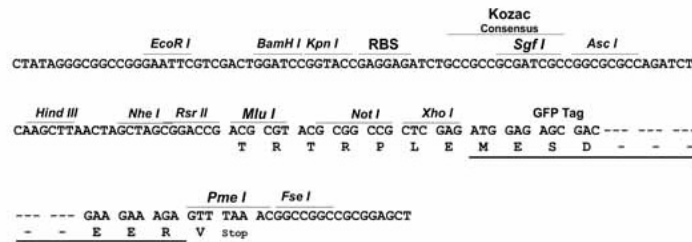
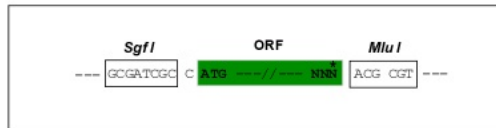
MSDSGSQLGSMGSLTMKSQLQITVISAKLKENKKNWFGPSYVEVTVDGQSKKTEKCNNTNSPKWKQPLT
 VIVTPVSKLHFRVWSHQTLKSDVLLGTAALDIYETLKSNNMKLEEVVVTLLQLGGDKPETETIGDLSICLD
 GLQLESEVVTNGETTCSSENGVSLCLPRLECNLSAHCNLCPLGSDSPIASRVAGFTGASQNDGSRSS
 KDETRVSTNGSDDPEDAGAGENRRVSGNNSPSLSNGGFKPSRPPRPSRPPPTPRRPASVNGSPSATSSES
 DGSSSTGSLPPTNTNTNTSEGATSLIIPLTISGGSGRPLNPVTQAPLPPGWEQRVDQHGRVYVVDHVEK
 RTTWDRPEPLPPGWERRVDNMGRYYYYVDFHTRTTTWRPTLESVRNYEQWQLQRSQLQGAMQQFNQRFIY
 GNQDLFATSQSKEFDPLGPLPPGWEKRTDSNGRVYFVNHNTRITQWEDPPRSQQQLNEKPLPEGWEMRFTV
 DGIPYFVDHNRRTTYIDPRTGKSALDNGPQIAYVRDFKAKVQYFRFWCQLAMPQHIKITVTRKTLFED
 SFQQIMSFSPQDLRRLWVIFPGEGLDYGGVAREWFFLLSHEVLNPMYCLFEYAGKDNYCLQINPASYI
 NPDHLKYFRFIGRFIAMALFHGKFDITGFSLPFYKRILNPKVGLKDLESIDPEFYNSLIWKENNIEECD
 LEMFYSDKEILGEIKSHDLKPNGGNILVTEENKEEYIRMVAEWRLSRGVEEQTQAFFEGFNEILPQQYL
 QYFDAKELEVL LCGMQEIDLNDWQRHAIYRHYARTSKQIMWFQFVKEIDNEKRMRLQLQVTGTCRLPVG
 GFADLMGSDNGPQKFCIEKVGKENWLP RSHTCFNRDLPPYKSYEQLKEKLLFAIEETEGFGQE

TRTRPLE - GFP Tag - V

Restriction Sites: SgfI-MluI

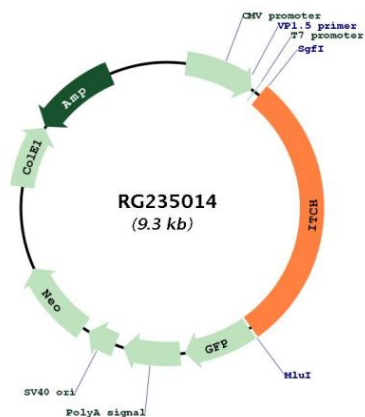
Cloning Scheme:

Cloning sites used for ORF Shuttling:



| | |
|-------------------------------|--|
| ACCN: | NM_001257137 |
| ORF Size: | 2709 bp |
| OTI Disclaimer: | The molecular sequence of this clone aligns with the gene accession number as a point of reference only. However, individual transcript sequences of the same gene can differ through naturally occurring variations (e.g. polymorphisms), each with its own valid existence. This clone is substantially in agreement with the reference, but a complete review of all prevailing variants is recommended prior to use. More info |
| OTI Annotation: | This clone was engineered to express the complete ORF with an expression tag. Expression varies depending on the nature of the gene. |
| Components: | The ORF clone is ion-exchange column purified and shipped in a 2D barcoded Matrix tube containing 10ug of transfection-ready, dried plasmid DNA (reconstitute with 100 ul of water). |
| Reconstitution Method: | <ol style="list-style-type: none">1. Centrifuge at 5,000xg for 5min.2. Carefully open the tube and add 100ul of sterile water to dissolve the DNA.3. Close the tube and incubate for 10 minutes at room temperature.4. Briefly vortex the tube and then do a quick spin (less than 5000xg) to concentrate the liquid at the bottom.5. Store the suspended plasmid at -20°C. The DNA is stable for at least one year from date of shipping when stored at -20°C. |
| RefSeq: | NM_001257137.3 |
| RefSeq Size: | 6535 bp |
| RefSeq ORF: | 2712 bp |
| Locus ID: | 83737 |
| UniProt ID: | Q96J02 |
| Cytogenetics: | 20q11.22 |
| Protein Families: | Druggable Genome, Transcription Factors |
| Protein Pathways: | Endocytosis, Ubiquitin mediated proteolysis |
| Gene Summary: | This gene encodes a member of the Nedd4 family of HECT domain E3 ubiquitin ligases. HECT domain E3 ubiquitin ligases transfer ubiquitin from E2 ubiquitin-conjugating enzymes to protein substrates, thus targeting specific proteins for lysosomal degradation. The encoded protein plays a role in multiple cellular processes including erythroid and lymphoid cell differentiation and the regulation of immune responses. Mutations in this gene are a cause of syndromic multisystem autoimmune disease. Alternatively spliced transcript variants encoding multiple isoforms have been observed for this gene. [provided by RefSeq, Mar 2012] |

Product images:



Circular map for RG235014