

Product datasheet for **RG235002**

OSBPL6 (NM_001201482) Human Tagged ORF Clone

Product data:

Product Type:	Expression Plasmids
Product Name:	OSBPL6 (NM_001201482) Human Tagged ORF Clone
Tag:	TurboGFP
Symbol:	OSBPL6
Synonyms:	ORP6
Mammalian Cell Selection:	Neomycin
Vector:	pCMV6-AC-GFP (PS100010)
E. coli Selection:	Ampicillin (100 ug/mL)



[View online »](#)

ORF Nucleotide Sequence:

>RG235002 representing NM_001201482
 Red=Cloning site Blue=ORF Green=Tags(s)

TTTTGTAATACGACTCACTATAGGGCGGCCGGGAATTCGTCGACTGGATCCGGTACCGAGGAGATCTGCC
 GCC**CGGATCGCC**

ATGAGTTCAGATGAGAAGGGCATTTCCTGCTCATAAAACATCCACTCCAACCCATAGAAGTGCCTCCT
 CTTCAACATCCTCCCAAAGGGACAGTAGGCAGAGTATTACATACTGGAGAGGACTGCTTCTCTAGCAC
 CGAGCCCTCTGTAAGTCCGCAATTGCTAGAACCGGAGCCAGTCCCCCTCTCCAAGGAAGCTGACAGCTGG
 GAAATTATAGAAGGGCTGAAAATAGGCCAAACCAATGTCCAGAAACCAGACAAACATGAGGGCTTTATGC
 TGAAGAAAAGAAAATGGCCTTTAAAAGGCTGGCACAAGCGTTTTTTTTGCTGGATAATGGAATGTTAAA
 GTATTCAAAGGCACCACTCGATATTCAGAAAGGAAAGTCCATGGGAGCATAGATGTGGGACTCTCAGTC
 ATGTCAATTAAGAAAGCTCGAAGAATAGACCTTGACACCGAAGAGCACATCTATCATTTGAAGGTGA
 AATCCCAGGACTGGTTTGTATGCATGGGTCTCAAACCTGCGACATCATCGTTGTATCGTCAGAATGAAAT
 TGTGAGATCACCAAGAGATGCTAGTTTTACATATTTCTTCAAGTCCACAGCTGAATCCTCACCAGCT
 GCTAATGTTTCTGTAATGGATGGAAGATGCAACCAAACAGCTTTCCGTGGCAGTCCCCTTTACCATGCA
 GCAATAGCCTCCCTGCAACGTGCACAACCTGGCCAGAGTAAAGTGGCAGCCTGGTTACAGGACTCGGAAGA
 GATGGACAGGTGTGCAGAAGATCTGCACATTGCCAGTCAAACCTTGTGGAACCTAGCAAACCTCTGCAA
 AATTTGAAAATACTTCAGAGAATCAGTCGGCACCTAACCTTACTGACATGCAGGCTAACGTGTAGATA
 TTTCAAAGAAAGACAAGCGGGTCAAGACGATGGAGAACAAAAGTGTGAGCAAGATACAAAATACA
 ACTGCAGGTTCCCTTCAGTGCTACCATGTACCAGTTCGCTTGCATTCTCCAACCCCAACCTTTGTGCA
 GATATTGAATTTAGACTCCCTTAGCCACCTACTGACCCTCTGAAAGTCAACAGATTATACAAAGC
 TGCAAGAAGAATTTGTCTAATCGCACAGAAAGTGCATTCTTTTTGAAGTCTGCATTTAATAGCATAGC
 TATAGAGAAGGAGAAGCTGAAGCAGATGGTTTCCGAGCAGGATCACAGTAAAGGCCACAGCACGAGATG
 GCACGGCTCCGACAGTCACTGTCTCAGGCTGGTGAACAATCCATGTCAGTCTCCCTTATCACAGCAAG
 TAGCCAATGAGAGCCGCCTCTCCATGTCAGAGTCTGTTTCTGAGTCTTTGATGCCCAAGAGGTGCTCCT
 CTCTGCAAGTTCGTCAGAGAATGAGGCTTCAGATGATGAGTCTTACATCAGTGTGTGAGTGATAATATA
 TCTGAAGACAACACCAGTGTGACAGACAATTTCTCGGCAATCCTGAATGGGGAGCTTACAGGAGGGG
 CCTTCCGAAATGGGCGTCGAGCATGCCTGCCAGCTCCTTGTCTGACACCAGTAACATTAACCTGTGGAA
 TATCTTGAGGAACAACATTGGTAAAGACCTGTCTAAAGTCTCTATGCCTGTGGAGCTAAACGAGCCGCTC
 AACACCCTGCAGCACCTCTGTGAGGAAATGGAATACAGCGAGCTCCTGGACAAGGCTTCGGAACCTGATG
 ATCCATATGAGCGCATGGTTCTCGTTGCCGCATTTGCAGTTTCAGGATACTGCTCCACCTATTTAGAGC
 AGGAAGTAAGCCATTCAACCCAGTCTTGGGGAGACTTATGAATGCATTAGAGAAGACAAGGGATTCCGC
 TTTTTCTCAGAACAGGTTAGCCATCATCCACCTTTCTGCCTGTCACTGTGAATCAAAGAATTTGTGT
 TTTGGCAAGATATCAGATGGAAAAACAAGTTCTGGGGGAAGTCGATGGAATCCTGCCTGTTGGAACACT
 GAATGTCATGCTCCAAAGTATGGAGATTACTATGTGTGGAATAAAGTCAACCTTGATACACAACATC
 CTCAGTGGGAGAAGATGGATAGAACATTATGGAGAAGTAAACATCAGAAATACAAAAGCAGTGTGTTGCA
 TTTGCAAACTCACATTTGTCAAGGTGAATATTGGAATTCAACATGAATGAAGTCCAGGGGGTGGTGT
 AGATCAGGAGGGGAAGGCGGTGTACCGGCTGTTTGGAAAGTGGCATGAAGGACTCTACTGTGGTGGCC
 CCTCTGCAAAGTGCATTTGGAGACCAGTTCATGCCAACAAACTATGAGCTGTACTATGGCTTACAA
 GGTTTGCTATTGAGCTCAATGAGTTAGATCCAGTACTAAAAGATCTCCTTCCACCAACAGACGCCGGTT
 CCGGCCAGATCAAAGATTTTGGAAAGAGGAAATTTAGAAGCTGCAGCATCAGAGAAGCAAAGAGTAGAG
 GAACTCCAGAGATCTCGGAGACGATATATGGAAGAAAACAATCTTGAACATATACAAAATTTTTTAAAA
 AAGTTATTGATGCCAATCAAAGAGAAGCCTGGGTTTCTAACGACACCTACTGGGAGCTTCGAAAGGACCC
 TGGGTTTAGCAAAGTAGACAGCCCTGTTCTTTGG

ACGCGTACGCGGCCGCTCGAG - GFP Tag - **GTTTAA**

Protein Sequence: >RG235002 representing NM_001201482
 Red=Cloning site Green=Tags(s)

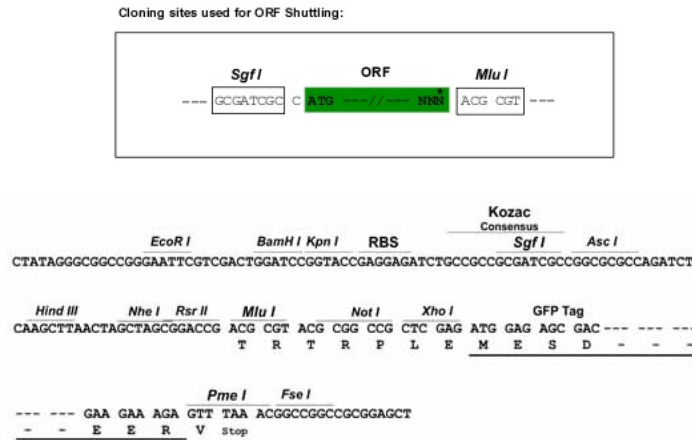
MSSDEKGISPAHKTSTPTHRASSTSSQRDSRQSIHILERTASSSTEPSVSRQLLEPEPVPLSKEADSW
 EII EGLKIGQTNVQPKHEGFMLKRRKRWPLKGWHKRFVLDNGMLKYSKAPLDIQKGVHGSIDVGLSV
 MSIKKKARRIDLDT EEHIYHLKVKSQDWFDAVSKLRHHRLYRQNEIVRSPRDASFHIFPSTSTAESSPA
 ANVSVMDGKMQPNSFPWQSP LPCSNSLPATCTTGQSKVAAWLQDSEEMDRCAEDLAHCQSNLVELSKLLQ
 NLEILQRTQSAPNFTDMQANCVDI SKDKRVTRRWRKTSVSKDTKIQLQVPSATMSPVRLHSSNPNLCA
 DIEFQTPPSHLTDPLESSTDYTKLQEEFCLIAQKVHSL LKSAFNIAIEKEK LKQMVSEQDHSKGHSTQM
 ARLRQSL SQAGEQIHVSLPLSQQVANESRLSMSESVEFFDAQEVLLSASSSENEASDDESYSIDVSDNI
 SEDNTSVADNISRQILNGELTGGAFRNGRRACLPAPCPDTSNINLWNILRNNIGKDL SKVSMPVELNEPL
 NTLQHLCEEMEYSEL LDKASETDDPYERMVLAFAFVSGYCSTYFRAGSKPFNPVLGETYECIREDKGFR
 FFSEQVSHHPPISACHCESKNFVFWQDIRWKNKFWGKSMEILPVGTLNVMPLPKYGDYVWNKVTTTCIHNI
 LSGRRWIEHYGEVTIRNTKSSVIC KLFVKVNYWNSNMNEVQGVVIDQEGKAVYRLF GKWHEGL YCGVA
 PSAKCIWRPGSMPTNYELYYGTRFAIELNELDPVLKDLLPPTDARFRPDQRFL EEGNLEAAASEKQRVE
 ELQRRRRRYMEENLEH I PKFFKVIDANQREAWVSN DTYWELRKDPGF SKVDSPVLW

TRTRPLE - GFP Tag - V

Restriction Sites:

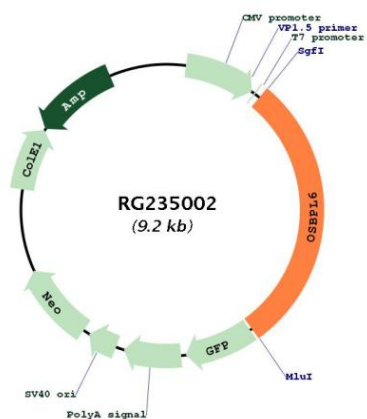
SgfI-MluI

Cloning Scheme:



ACCN:	NM_001201482
ORF Size:	2694 bp
OTI Disclaimer:	The molecular sequence of this clone aligns with the gene accession number as a point of reference only. However, individual transcript sequences of the same gene can differ through naturally occurring variations (e.g. polymorphisms), each with its own valid existence. This clone is substantially in agreement with the reference, but a complete review of all prevailing variants is recommended prior to use. More info
OTI Annotation:	This clone was engineered to express the complete ORF with an expression tag. Expression varies depending on the nature of the gene.
Components:	The ORF clone is ion-exchange column purified and shipped in a 2D barcoded Matrix tube containing 10ug of transfection-ready, dried plasmid DNA (reconstitute with 100 ul of water).
Reconstitution Method:	<ol style="list-style-type: none">1. Centrifuge at 5,000xg for 5min.2. Carefully open the tube and add 100ul of sterile water to dissolve the DNA.3. Close the tube and incubate for 10 minutes at room temperature.4. Briefly vortex the tube and then do a quick spin (less than 5000xg) to concentrate the liquid at the bottom.5. Store the suspended plasmid at -20°C. The DNA is stable for at least one year from date of shipping when stored at -20°C.
RefSeq:	NM_001201482.1 , NP_001188411.1
RefSeq Size:	7132 bp
RefSeq ORF:	2697 bp
Locus ID:	114880
UniProt ID:	Q9BZF3
Cytogenetics:	2q31.2
Gene Summary:	This gene encodes a member of the oxysterol-binding protein (OSBP) family, a group of intracellular lipid receptors. Most members contain an N-terminal pleckstrin homology domain and a highly conserved C-terminal OSBP-like sterol-binding domain. Transcript variants encoding different isoforms have been identified. [provided by RefSeq, Jul 2008]

Product images:



Circular map for RG235002