

## Product datasheet for **RG234995**

### **NALP6 (NLRP6) (NM\_001276700) Human Tagged ORF Clone**

#### **Product data:**

Product Type:	Expression Plasmids
Product Name:	NALP6 (NLRP6) (NM_001276700) Human Tagged ORF Clone
Tag:	TurboGFP
Symbol:	NALP6
Synonyms:	AVR; CLR11.4; NALP6; NAVR; NAVR/AVR; PAN3; PYPAF5
Mammalian Cell Selection:	Neomycin
Vector:	pCMV6-AC-GFP (PS100010)
E. coli Selection:	Ampicillin (100 ug/mL)



[View online »](#)

**ORF Nucleotide Sequence:**

>RG234995 representing NM\_001276700  
 Red=Cloning site Blue=ORF Green=Tags(s)

TTTTGTAATACGACTCACTATAGGGCGGCCGGAATTCGTCGACTGGATCCGGTACCGAGGAGATCTGCC  
 GCC**CGCATCGCC**

ATGGACCAGCCAGAGCCCCCTGCTCCAGCACGGGGCCGCGCCTCGCGGTGGCCCGGAGCTGCTCCTGG  
 CTGCGCTGGAGGAAGTGAAGCAAGAGCAGCTGAAGCGCTTCCGCCACAAGCTGCGCGACGTGGGCCCGGA  
 CGGACGCAGCATCCCGTGGGGGGCGCTGGAGCGCGGACGCGCTGGACCTCGCGGAGCAGCTGGCCAG  
 TTCTACGGCCCGGAGCCTGCCCTGGAGGTGGCCCGCAAGACCCTCAAGAGGGCGGACGCGCGCAGCTGG  
 CGGCGCAGCTCCAGGAGCGGCGCTGCAGCGGCTCGGGCTCGGCTCCGGGACGCTGCTCTCCGTGCCGA  
 GTACAAGAAGAAGTACCGGGAGCACGTGCTGCAGCTGCACGCTCGGGTGAAGGAGAGGAACGCCCGCTCC  
 GTGAAGATCACCAAGCGCTTACCAAGCTGCTCATCGCGCCGAGAGCGCCCGCCGAGGAGGCGATGG  
 GGCCCGCGGAAGAGCCTGAGCCGGGGCGCGCGCGGCTCGGACACGCACACTTCAACCGCCTCTCCG  
 CCGCGACGAGGAGGGCCGCGCGCTGACCGTGGTGTGTCAGGGCCCGCGGGCATCGGAAGACCATG  
 GCGGCCAAAAAGATCCTGTACGACTGGCGGGCGGCAAGCTGTACCAGGGCCAGGTGGACTTCGCCCTTCT  
 TCATGCCCTGCGGCGAGCTGCTGGAGAGCCGGGCACGCGCAGCCTGGCTGACCTGATCCTGGACCAGTG  
 CCCCAGCCGCGCGCGCCGGTGCAGATGCTGGCCAGCCGACGCGGCTGCTCTTATCCTGGACGGC  
 GCGGACGAGCTGCCGGCGCTGGGGGGCCCCGAGGCCGCGCCCTGCACAGACCCCTTCGAGGCGGCGAGCG  
 GCGCGCGGGTGTAGGCGGGCTGCTGAGCAAGGCGCTGCTGCCACGGCCCTCCTGCTGGTGACCACGCG  
 CGCCCGCCCCCGGAGGCTGCAGGGCCGCTGTGTTCCCGCAGTGCAGGAGGTGCGCGGCTTCTCC  
 GACAAGGACAAGAAGAAGTATTTCTACAAGTATTTCCGGATGAGAGGAGGGCCGAGCGCCCTACCGCT  
 TCGTGAAGGAGAACGAGACGCTGTTCCGCTGTGCTTCTGTCCTTCTGTTGCTGGATCGTGCACCGT  
 GCTGCGCCAGCAGCTGGAGCTCGGTCCGGACCTGTCGCGCACGTCCAAGACCACCACGTACGTACCTG  
 CTTTTATCACACGCTTCTGAGCTCGGCTCCGGTAGCCGACGGGCCCGGTTGCAGGGCAGCTGCGCA  
 ATCTGTGCCGCTGGCCCGGAGGGCTCCTCGGACGACGGGCGCAGTTTGCCGAGAAGGAACTGGAGCA  
 ACTGGAGCTTCTGGCTCCAAAGTGCAGACGCTGTTTCTCAGCAAAAAGGAGCTGCCGGCGTGTGGAG  
 ACAGAGGTCACCTACCAGTTCATCGACCAGAGCTTCCAGGAGTTCCTCGCGGCACTGTCTACCTGCTGG  
 AGGACGGCGGGGTGCCAGGACCGGCTGGCGGCTTGGGACACTCCTGCGTGGGACGCCAGCCGCGCA  
 CAGCCACTTGGTGTCCACACGCGCTTCTCTTCCGACTGCTGAGCGGAGCGGATGCGCGACATCGAG  
 CGCCACTTCCGCTGCATGGTTTTCAGAGCGTGTGAAGCAGGAGGCCCTGCGGTGGGTGCAGGGACAGGGAC  
 AGGGCTGCCCCGAGTGGCACCAGAGGTGACCGAGGGGGCCAAAGGGCTCGAGGACACCGAAGAGCCAGA  
 GGAGGAGGAGGAGGGAGAGGAGCCAACTACCCACTGGAGTTGCTGTACTGCCTGTACGAGACGCAGGAG  
 GACGCGTTTGTGCGCAAGCCCTGTGCCGTTCCCGGAGCTGGCGCTGCAGCGAGTGCCTTCTGCCGCA  
 TGGACGTGGTGTCTGAGTACTGCGTGGAGTGTGCCCTGCTGGACAGGCACTGCGGCTGATCAGCTG  
 CAGATTGGTTGCTGCGCAGGAGAAGAAGAAGAGCCTGGGGAAGCGGCTCCAGGCCAGCCTGGGTGGC  
 GGCAGTTCTCAAGGCACCACAAAACACTGCCAGCCTCCCTTCTCATCCACTCTTTCAGGCAATGACTG  
 ACCCACTGTGCCATCTGAGCAGCCTCACGCTGTCCACTGCAAACTCCCTGACCGGCTGTCGCGAGACT  
 TTCTGAGGCCCTGAGGGCAGCCCCGCACTGACGGAGCTGGGCTCCTCCACAACAGGCTCAGTGAGGGC  
 GACTGCGTATGCTGAGTGAAGGCTAGCCTGGCCGAGTGCAGGGTGCAGACGGTCAAGGTACAGCTGC  
 CTGACCCCGAGGAGGCTCCAGTACCTGGTGGGTATGCTTCCGGCAGAGCCCTGCCCTGACCACCTGGA  
 TCTCAGCGGCTGCCAACTGCCGCCCCATGGTGACCTACCTGTGTGAGTCTGACGACCCAGGGATGC  
 GGCTGACAGCCCTCAGTCTGGCTCTGTGGAGCTGAGCGAGCAGTCACTACAGGAGCTTACGGCTGTGA  
 AGAGAGCAAAGCCGATCTGGTCATCACACCCAGCGCTGGACGGCCACCACAACCTCCCAAGGAACT  
 CATCTCGACCTC

AGCGGACCGACGCGTACGCGGCCGCTCGAG - GFP Tag - GTTTAA

**Protein Sequence:** >RG234995 representing NM\_001276700  
 Red=Cloning site Green=Tags(s)

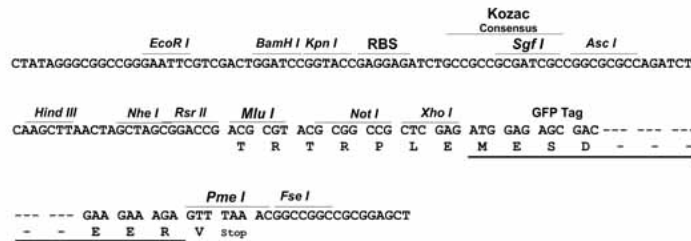
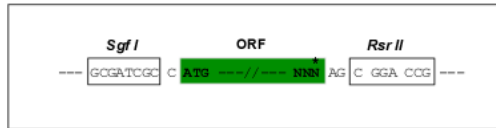
MDQPEAPCSSTGPRLAVARELLLALEELSQEQLKRFHKL RDVGPDGRSIPWGRLE RADAVDLAEQLAQ  
 FYGPEPALEVARKTLKRADARDVAAQLQERRLQRLGLGSGTLLSVSEYKKKYREHVLQLHARVKERNARS  
 VKITKRFKLLIAPESAAPEEAMGPAEEPEPGRARRSDTHTFNRLFRRDEEGRRPLTVVLQGPAGIGKTM  
 AAKKILYDWAAGKLYQGQVDFAFFMPCGELLERPGTRSLADLILDQCPDRGAPVPQMLAQPRLLFILDG  
 ADEL PALGGPEAAPCTDPFEAASGARVLGGLLSKALLPTALLLVTTTRAAAPGRLQGRLCSPQCAEVRGFS  
 DKDKKKYFYKYFRDERRAERAYRFVKENETL FALCFVPFVCWIVCTVLRQQLELGRDL SRTSKTTTSVYL  
 LFITSVLSSAPVADGPRLQGDRLNLCRLAREGLGRRAQFAEKELEQLELRGSKVQTLFLSKKELPGVLE  
 TEVTYQFIDQSFQEF LAALSYLLEDGGVPRTAAGGVGTL LRGDAQPHSHLVLTTRFLFGLLSAERMRIE  
 RHF GCMVSERVKQ EALRWVQGGQGC PGVAPEVTEGAKGLEDTEEPEEEEEGEEP NYPLELLYCLYETQE  
 DAFVRQALCRFP ELALQVRVFCRMDVAVLSYCVRCCPAGQALRLISCRLVAAQEKKKSLGKRLQASLGG  
 GSSQGTTKQLPASLLHPLFQAMTDPLCHLSSLTL SHCKLPDAVCRDLSEALRAAPALTEGLLHNRLSEA  
 GLRMLSEGLAWPQCRVQTVRVQLPDPQRGLQYL VGMLRQSPAL TTDLSGCQLPAPMVTYLCAVLQHQC  
 GLQTL SLASVELSEQLQELQAVKRAKPDLVITHPALDGHPQPPKELISTF

SGPTRRRLE - GFP Tag - V

**Restriction Sites:** SgfI-RsrII

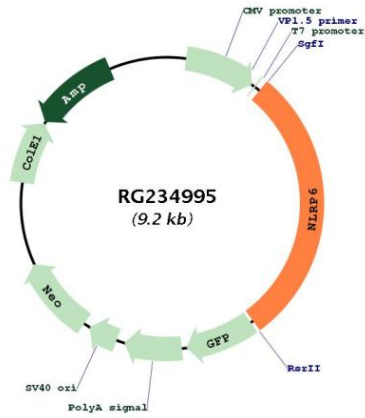
**Cloning Scheme:**

Cloning sites used for ORF Shuttling:



<b>ACCN:</b>	NM_001276700
<b>ORF Size:</b>	2673 bp
<b>OTI Disclaimer:</b>	The molecular sequence of this clone aligns with the gene accession number as a point of reference only. However, individual transcript sequences of the same gene can differ through naturally occurring variations (e.g. polymorphisms), each with its own valid existence. This clone is substantially in agreement with the reference, but a complete review of all prevailing variants is recommended prior to use. <a href="#">More info</a>
<b>OTI Annotation:</b>	This clone was engineered to express the complete ORF with an expression tag. Expression varies depending on the nature of the gene.
<b>Components:</b>	The ORF clone is ion-exchange column purified and shipped in a 2D barcoded Matrix tube containing 10ug of transfection-ready, dried plasmid DNA (reconstitute with 100 ul of water).
<b>Reconstitution Method:</b>	<ol style="list-style-type: none"><li>1. Centrifuge at 5,000xg for 5min.</li><li>2. Carefully open the tube and add 100ul of sterile water to dissolve the DNA.</li><li>3. Close the tube and incubate for 10 minutes at room temperature.</li><li>4. Briefly vortex the tube and then do a quick spin (less than 5000xg) to concentrate the liquid at the bottom.</li><li>5. Store the suspended plasmid at -20°C. The DNA is stable for at least one year from date of shipping when stored at -20°C.</li></ol>
<b>RefSeq:</b>	<a href="#">NM_001276700.2</a>
<b>RefSeq Size:</b>	2760 bp
<b>RefSeq ORF:</b>	2676 bp
<b>Locus ID:</b>	171389
<b>UniProt ID:</b>	<a href="#">P59044</a>
<b>Cytogenetics:</b>	11p15.5
<b>Gene Summary:</b>	The protein encoded by this gene binds arginine-vasopressin and may be involved in the arginine-vasopressin-mediated regulation of renal salt-water balance. The encoded protein also mediates inflammatory responses in the colon to allow recovery from intestinal epithelial damage and protects against tumorigenesis and the development of colitis. Finally, this protein can increase activation of NF-kappa-B, activation of CASP1 through interaction with ASC, and cAMP accumulation. Two transcript variants encoding different isoforms have been found for this gene. [provided by RefSeq, Feb 2013]

Product images:



Circular map for RG234995