

## Product datasheet for **RG234994**

### **PTPRN (NM\_001199764) Human Tagged ORF Clone**

#### **Product data:**

Product Type:	Expression Plasmids
Product Name:	PTPRN (NM_001199764) Human Tagged ORF Clone
Tag:	TurboGFP
Symbol:	PTPRN
Synonyms:	IA-2; IA-2/PTP; IA2; ICA512; R-PTP-N
Mammalian Cell Selection:	Neomycin
Vector:	pCMV6-AC-GFP (PS100010)
E. coli Selection:	Ampicillin (100 ug/mL)



[View online »](#)

ORF Nucleotide  
Sequence:

>RG234994 representing NM\_001199764  
 Red=Cloning site Blue=ORF Green=Tags(s)

TTTTGTAATACGACTCACTATAGGGCGGCCGGGAATTCGTCGACTGGATCCGGTACCGAGGAGATCTGCC  
 GCC**CGCATCGCC**

ATGTCCCAAGGATTGTCCTGGCAGCATGACCTCACCCAGTATGTGATCTCTCAGGAGATGGAGCGCATCC  
 CCAGGCTTCGCCCCCAGAGCCCGTCCAAGGGACAGGTCTGGCTTGGCACCCAAGAGACCTGGTCTGCTG  
 TGGAGAGCTGCTTTTACAGGACATCCCCACTGGCTCCGCCCTGCTGCCAGCATCGCTTCCACAACCA  
 CCAGTGGGCAAAGGTGGAGCTGGGGCCAGCTCCTCTGTCCCCTCTGCAGGCTGAGCTGCTCCCGCCTC  
 TCTTGGAGCACCTGCTGCTGCCCCACAGCCTCCCCACCCTTCACTGAGTTACGAACCTGCCTTGTGCA  
 GCCCTACCTGTTCCACCAGTTTGGCTCCCGTATGGCTCCAGGGTCTCAGAGGGCTCCCCAGGGATGGTC  
 AGTGTGCGCCCCCTGCCAAGGTGAAGCCCTGCCCTTTCAGCAGAAGTGCCTCAAGGGCATATTTG  
 GGGACCACCTGGCCACTCTACGGGGACCTTCCAGGGCCTTACCTGCCAGCTTTTTCAAGACTCTGG  
 GCTGCTCTATCTGCCCCAGGAGTTGCCAGCACCCAGCAGGGCCAGGGTCCAAGGCTGCCAGAGCAAGGG  
 AGCAGCAGCCGGGCAGAGGACTCCCCAGAGGGCTATGAGAAGGAAGGACTAGGGGATCGTGAGAGAAGC  
 CTGCTTCCCCAGCTGTGCAGCCAGATGCGGCTCTGCAGAGGCTGGCCGCTGTGCTGGCGGGCTATGGGGT  
 AGAGCTGCGTCAGCTGACCCCTGAGCAGCTCTCCACACTCCTGACCTGCTGCAGCTACTGCCAAGGGT  
 GCAGGAAGAAATCCGGGAGGGGTGTAATGTTGGAGCTGATATCAAGAAAACAATGGAGGGGCCGGTGG  
 AGGGCAGAGACACAGCAGAGCTTCCAGCCCGCACATCCCCATGCTGGACACCCCACTGCCAGCCCTAC  
 CTCCAGTGAAGTCCAGCAGGTGCCAAGCCCTGTCTCTGAGCCTCCAAAGCTGCCAGACCCCTGTG  
 ACACCTGTCTGCTAGAGAAGAAAAGCCCACTGGGCCAGAGCCAGCCACGGTGGCAGGACAGCCCTCAG  
 CCGGCCAGCAGCAGAGGAATATGGCTACATCGTCACTGATCAGAAGCCCTGAGCCTGGCTGAGGAGT  
 GAAGCTGCTGGAGATCCTGGCTGAGCATGTGCACATGTCCTCAGGCAGCTTCATCAACATCAGTGTGGTG  
 GGACCAGCCCTCACCTTCCGCATCCGGCACAATGAGCAGAACCTGTCTTTGGCTGATGTGCCAACAAG  
 CAGGGCTGGTGAAGTCTGAACTGGAAGCACAGACAGGGCTCCAAATCTTGCAGACAGGAGTGGGACAGAG  
 GGAGGAGGAGCTGCAGTCTTCCCAAAGTGGCACAGCACCTCACCCATGCGCTCAGTCTGCTCACT  
 CTGGTGGCCCTGGCAGGTGTGGCTGGGCTGCTGGTGGCTCTGGCTGTGGCTCTGTGTGTGCGGCAGCATG  
 CGCGGCAGCAAGACAAGGAGCGCCTGGCAGCCCTGGGGCCTGAGGGGGCCATGGTGACACTACCTTTGA  
 GTACCAGGACCTGTGCCCCAGCACATGGCCACGAAGTCTTGTCAACCGGGCAGAGGGTCCACCGGAG  
 CCTTACGGGTGAGCAGTGTCTCTCCAGTTCAGCGACGACGCCAGGCCAGCCCACTGCCACAGCA  
 GCACCCGCTCCTGGTGCAGGAGCCGGCCAAAGCCAACATGGACATCTCCACGGGACACATGATTCTGGC  
 ATACATGGAGGATCACCTGCGGAACCGGGACCGCCTTGCCAAGGAGTGGCAGGCCCTCTGTGCTACCAA  
 GCAGAGCCAAACCTGTGCCACCGCGCAGGGGGAGGGCAACATCAAAAAGAACCAGGATCCTGACTTCC  
 TGCCCTATGACCATGCCCGCATAAACTGAAGGTGGAGAGCAGCCCTTCTCGGAGCGATTACATCAACGC  
 CAGCCCCATTATTGAGCATGACCCTCGGATGCCAGCCTACATAGCCACGAGGGCCCGCTGTCCCATACC  
 ATCGCAGACTTCTGGCAGATGGTGTGGGAGAGCGGCTGCACCGTCATCGTCATGCTGACCCCGCTGGTGG  
 AGGATGGTGTCAAGCAGTGTGACCGCTACTGGCCAGATGAGGGTGCCTCCCTTACCACGTATATGAGGT  
 GAACCTGGTGTGGGAGCACATCTGGTGGGAGGACTTTCTGGTGGGAGCTTCTACCTGAAGAACGTGCAG  
 ACCCAGGAGACGCGCACGCTCACGCAGTTCCTACTTCTCAGCTGGCCGGCAGAGGGCACACCGGCCCTCA  
 CGCGGCCCTGCTGGACTTCCGCAGGAAGTGAACAAGTGTACCGGGGGCCGCTCCTGCCCATCATCGT  
 GCACTGCAGTGTGGTGGGGAGGACCGCACCTACATCCTCATCGACATGGTCTGAACCGCATGGCA  
 AAAGGAGTGAAGGAGATTGACATCGCTGCCACCCTGGAGCATGTCCGTGACCAGCGCCCTGGCCTTGTCC  
 GCTCTAAGGACCAGTTTGAATTTGCCCTGACAGCCGTGGCGGAGGAAGTGAATGCCATCTCAAGGCCCT  
 GCCCAG

**ACGGTACGCGGCCGCTCGAG** - GFP Tag - GTTTAA

**Protein Sequence:** >RG234994 representing NM\_001199764  
 Red=Cloning site Green=Tags(s)

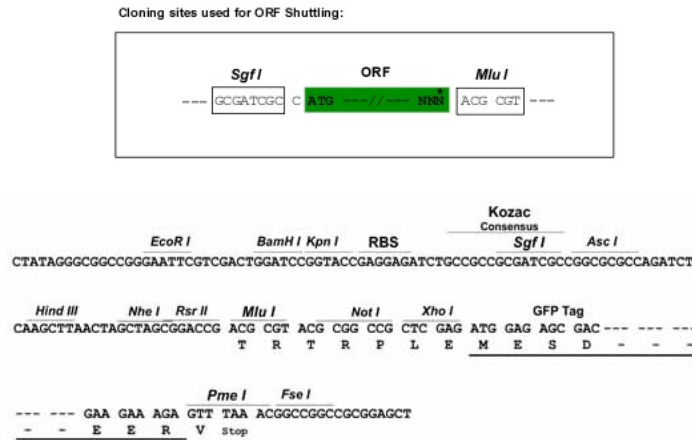
```
MSQGLSWHDDL TQYVISQEMERIPRLRPPEPRPRDRSGLAPKRPGPAGELL LQDIPTGSAPAAQHRLPQP
PVGKGGAGASSL SPLQAELL PPLLEHLLL PPQP PPHPSL SYEPALL QPYLFHQFGSRDGSRVSEGS PMV
SVG PLKAEAPALF SRTASKGIFGDHPGHSYGDLP GPSPAQLFQDSGLL YLAQELPAPSRARVPRLEQG
SSSRAEDSPEGYEKEGLGDRGEKPASPAVQPDAA LQRLAAVLAGYGVLRQLTPEQLSTLL TLLQLLPKG
AGRNPGGVVNVGADIKKTMEGPVEGRDTAELPARTSPMPGHPTASPTSSSEVQQVPSVPSSEPPKAARPPV
TPV LLEKKSPLGQSQPTVAGQPSARPAEEYGYIVTDQKPLSLAAGVKLLEILA EHVHMSGSF INISV
GPALTFRIRHNEQNL SLADVTQQAGLVKSELEAQTGLQILQ TGVGQREAAA VLPQTAHSTSPMRSVLLT
LVALAGVAGLLVALAVALCVRQHARQQDKERLAALGPEG AHGDTTFEYQDL CRQHMATKSLFNRAEGPPE
PSRVSSVSSQFSDAAQASPSHSSTPSWCEEP AQANMDISTGHMILAYMEDHLNRDRLAKEWQALCAYQ
AEPNTCATAQEGE NIKNRHPDFLPYDHARIKLVES SPSRSDYINASPIIEHDP RMPAYIATQG PL SHT
IADFWMVWESGCTVIVMLTPLVEDGVKQCDRYWPDE GASLYHVVEVNLVSEHIWCEDFLVRSFY LKNVQ
TQETRTL TQHFHLSWPAEGTPASTRPLLD FRRKVNKCYGRS CPIVHCS DGAGRTGT YILIDMVLNRMA
KGVKEIDIAATLEHVRDQRPGLVRSKDQFEFAL TAVAEEVNAILKALPQ
```

TRTRPLE - GFP Tag - V

**Restriction Sites:**

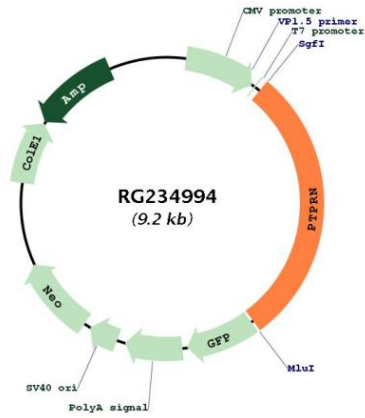
Sgfl-MluI

**Cloning Scheme:**



<b>ACCN:</b>	NM_001199764
<b>ORF Size:</b>	2667 bp
<b>OTI Disclaimer:</b>	The molecular sequence of this clone aligns with the gene accession number as a point of reference only. However, individual transcript sequences of the same gene can differ through naturally occurring variations (e.g. polymorphisms), each with its own valid existence. This clone is substantially in agreement with the reference, but a complete review of all prevailing variants is recommended prior to use. <a href="#">More info</a>
<b>OTI Annotation:</b>	This clone was engineered to express the complete ORF with an expression tag. Expression varies depending on the nature of the gene.
<b>Components:</b>	The ORF clone is ion-exchange column purified and shipped in a 2D barcoded Matrix tube containing 10ug of transfection-ready, dried plasmid DNA (reconstitute with 100 ul of water).
<b>Reconstitution Method:</b>	<ol style="list-style-type: none"><li>1. Centrifuge at 5,000xg for 5min.</li><li>2. Carefully open the tube and add 100ul of sterile water to dissolve the DNA.</li><li>3. Close the tube and incubate for 10 minutes at room temperature.</li><li>4. Briefly vortex the tube and then do a quick spin (less than 5000xg) to concentrate the liquid at the bottom.</li><li>5. Store the suspended plasmid at -20°C. The DNA is stable for at least one year from date of shipping when stored at -20°C.</li></ol>
<b>RefSeq:</b>	<a href="#">NM_001199764.2</a>
<b>RefSeq Size:</b>	3570 bp
<b>RefSeq ORF:</b>	2670 bp
<b>Locus ID:</b>	5798
<b>UniProt ID:</b>	<a href="#">Q16849</a>
<b>Cytogenetics:</b>	2q35
<b>Protein Families:</b>	Druggable Genome, Transmembrane
<b>Protein Pathways:</b>	Type I diabetes mellitus
<b>Gene Summary:</b>	The protein encoded by this gene is a member of the protein tyrosine phosphatase (PTP) family. PTPs are known to be signaling molecules that regulate a variety of cellular processes including cell growth, differentiation, mitotic cycle, and oncogenic transformation. This PTP possesses an extracellular region, a single transmembrane region, and a single catalytic domain, and thus represents a receptor-type PTP. This PTP was found to be an autoantigen that is reactive with insulin-dependent diabetes mellitus (IDDM) patient sera, and thus may be a potential target of autoimmunity in diabetes mellitus. Alternate splicing results in multiple transcript variants.[provided by RefSeq, Dec 2010]

Product images:



Circular map for RG234994