

## Product datasheet for **RG234990**

### **DDX11 (NM\_001257145) Human Tagged ORF Clone**

#### **Product data:**

Product Type:	Expression Plasmids
Product Name:	DDX11 (NM_001257145) Human Tagged ORF Clone
Tag:	TurboGFP
Symbol:	DDX11
Synonyms:	CHL1; CHLR1; KRG2; WABS
Mammalian Cell Selection:	Neomycin
Vector:	pCMV6-AC-GFP (PS100010)
E. coli Selection:	Ampicillin (100 ug/mL)



[View online »](#)

**ORF Nucleotide Sequence:**

>RG234990 representing NM\_001257145  
 Red=Cloning site Blue=ORF Green=Tags(s)

TTTTGTAATACGACTCACTATAGGGCGGCCGGGAATTCGTCGACTGGATCCGGTACCGAGGAGATCTGCC  
 GCC**CGGATCGCC**

ATGGCAGAGCTGTACCGGTTTTGGAGGCTGGCAAGATTGGGATATTTGAGAGTCCAACCTGGCACTGGGA  
 AGTCCTTAAGTCTTATTTGTGGGCCCTCTCTGGCTCCGTGACTTTGAACAGAAGAAGCGTGAAGAAGA  
 GGCACGACTCCTTGAAACTGGAAGTGGCCCTTACATGATGAGAAAGATGAATCCCTGTGTCTGTCTTCT  
 TCCTGCGAAGGGGCTGCAGGCACCCGAGGCTGCTGGAGAACCAGGCTGGGTTACTCAGTTTGTGCAGA  
 AGAAAGAAGAGAGGGACCTGGTGGACCGACTAAAGGGGAGCAGGCCAGGAGGAAGCAGCGAGAAGAACG  
 CCTGCAGCAGCTGCAGCACAGGGTGCAGCTCAAGTATGCAGCCAAGCGCTGAGGCAGGAAGAAGAAGAA  
 AGAGAGAATCTCCTCCGCTCAGCAGGGAGATGCTAGAGACAGGCCCGGAGGCTGAGCGGCTGGAGCAGC  
 TGGAGTCTGGGGAGGAGGCTGGTCTCGCCGAATACGAGAGTGTGAGGAGAAAAAGGTGGCGAGCAG  
 AGTGGATGAGGATGAGGATGACCTGGAGGAAGAACACATAACTAAGATTTATTACTGTAGTCGGACACAC  
 TCCAGCTGGCCAGTTTGTGCATGAGGTGAAGAAGAGCCCTTTGGCAAGGATGTTCCGGCTGGTCTCCC  
 TTGGCTCCCGCAGAACCCTTTGTGTAATGAAGACGTGAAAAGCCTAGGTTCTGTGCAGCTTATCAACGA  
 CCGCTGTGTGGACATGCAGAGAAGCAGGCACGAGAAGAAGAAAGGAGCTGAGGAGGAGAAGCCAAAGAGG  
 AGGAGGCAGGAGAAGCAGGCAGCCTGCCCTTCTACAACCACGAGCAGATGGGCCCTTCTCCGGGATGAGG  
 CCCTGGCAGAGGTGAAGGACATGGAGCAGCTGCTGGCCCTTGGGAAGGAGGCCCGGGCTGTCCCTATTA  
 CGGGAGCCGCTTGCCATCCCTGCAGCCAGCTGGTGGTGTGCCCTATCAGATGCTGCTGCATGCGGCC  
 ACTCGGCAGGCCGCGGGCATCCGGCTGCAGGACCAGGTGGTGTATCATCGACGAGGCGCACAACTGATCG  
 ACACCATCACGGGCATGCACACCGTGGAGGTGAGCGCTCCAGCTCTGCCAGGCCATCCAGGATCCAGTCT  
 GCAGTACGTGGAGCGATACGGGAAGCGTTTGAAGGCCAAGAACCCTGATGTACCTGAAGCAGATCCTGTAT  
 TTGCTGGAGAAATTCGTGGCTGTGCTAGGGGGAAACATTAAGCAAAATCCAATACACAGAGTCTGTAC  
 AGACAGGGACGGAGCTGAAGACCATCAACGACTTCTCTTCCAGAGCCAGATCGACAACATCAACCTGTT  
 CAAGGTGCAGCGATACTGTGAGAAGAGCATGATCAGCAGAAAGCTCTTTGGATTCACTGAACGGTACGGA  
 GCAGTGTCTCATCCCGGAGCAGCCAAACTGGCTGGGTTTTCAGCAATCCTGCAGAGCCTGCAGCCCA  
 GGACGACTGAAGCTTTGCAGCCCTGCAGACGAGAGTCAAGCCAGCACCCCTGCGACCAGCTTCTCCACT  
 GATGCACATCCAAGGCTTCTGGCAGCTCTCACTACGGCCAACCAGGACGGCAGGGTTCATCCTGAGCCGC  
 CAAGGCAGCCTCAGTCAGAGCACCTGAAGTTTTTGTCTCTGAATCCAGCTGTGCACTTTGCCCAAGTGG  
 TGAAGGAATGCCGGCAGTGGTCAATGCGGGGGTACCATGCAGCCGGTGTCTGACTTCCGGCAGCAGCT  
 GCTGGCCTGTGCCGGGTGGAAGCTGAGCGCGTGGTGGAGTTTTCTGTGGTACGTGATCCCTCCAGAC  
 AACATCCTGCCCTCGTCATCTGCAGCGGGATCTCCAACCAGCCGCTGGAATTCAGTTCAGAAAAGAG  
 AGCTGCCTCAGATGATGGACGAGGTGGTGCATTCTCTGTAACCTGTGCGGTGTGGTCTGGAGGGGT  
 GGTCTGTTTTCTCCCTCCTACGAGTACCTGCGCCAGGTCCATGCCCACTGGGAGAAGGGTGGCCTGCTG  
 GGCCGTCTGGCTGCCAGGAAGAAGATATCCAGGAACCTAAGAGCGCACACCAGGTGGAGCAGGTGCTGC  
 TGGCATAATCCAGGTGCATCCAGGCTGTGGCCAGGAGAGAGGCCAGGTGACAGGGGCCCTGCTCCTCTC  
 TGTGGTTGGAGGAAAGATGAGTGAAGGGATCAACTTCTCTGACAACTAGGCCGGTGTGGTGTGATGGTG  
 GGCATGCCCTTCCCAACATCAGGTCTGCAGAGCTGCAGGAGAAGATGGCCTACTTGATCAAACCTCC  
 CCAGAGCCCCCGCCAGGCACCCCAAGGAAGGCTCTGGTGGAGAACCCTGTGCATGAAGGCCGTCAACCA  
 GTCCATAGGCAGGGCCATCAGGCACCAGAAGGATTTTGGCAGCGTAGTGTCTGGACCAGCGATATGCC  
 CGGCCCTGTCTGGCCAAGCTGCCGGCTGGATCCGAGCCGTGTGGAGGTCAAAGCTACCTTTGGCC  
 CCGCCATTGTGTGTGCAGAAGTTTACCAGGAGAAAGTCCGGCTCTTCC

**ACGGTACGCGGCCGCTCGAG** - GFP Tag - **GTTTAA**

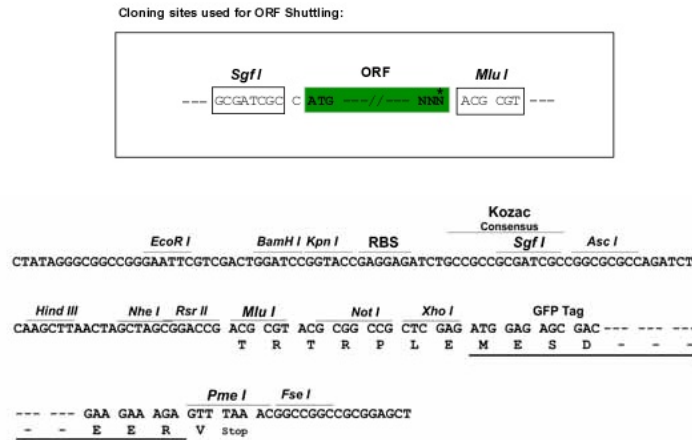
Protein Sequence: >RG234990 representing NM\_001257145  
 Red=Cloning site Green=Tags(s)

MAEL YRVLEAGKIGIFESPTGTGKSL ICGALSWLRDFEQKKREEEARLLETGTGPLHDEKDES LCLSS  
 SCEGAAGTPRPAGEPAWVTQFVQKKEERDLVDRLKAEQARRKQREERLQQLQHRVQLKYAAKRLRQE  
 RENLLRLSREMLETGPEAERLEQLES GEEELVLA EYESDEEEKVASRVEDEDDLEEEHITKIYYCSRTH  
 SQLAQFVHEVKKSPFGKDVRLVSLGSRQNL CVNEDVKSLG SVQLINDRCVDMQRSRHEKKGAE  
 RRQEKQAACPFYNHEQMGLLRDEALAEVKDMEQLLALGKEARACPYYSRLAIPAAQLVVL  
 PYQMLLHAA TRQAAGIRLQDQVVIIDEAHNLIDTITGMHSVEVSGSQLCQAHSQLLQYV  
 VERYGKRLKAKNLMYLKQILY LLEKFVAVLGGNIKQNPNTQSLSQTGTELKTINDFLFQ  
 SQIDNINL FKVQRYCEKSMISRLKFGFTERYG AVFSSREQPKLAGFQQFLQSLQPR  
 TTEALAAPADESQASTLRPASPLMHIQGFLAALTTANQDGRVILSR QGSLSQSTLKFLL  
 LNPVHFAQVVKCRAVVIAGGTMQPVSDFRQQLLACAGVEAERVVEFSCGHVIPP  
 D NILPLVICSGISNQPLEFTFQKREL PQMMDEVGRILCNLCGVVPGGVVCFFPSY  
 EYLRQVHAHWEKGLL GRLAARKKIFQEPKSAHQVEQVLLAYSRCIQACGQERGQVT  
 GALLLSVVGKMSSEGINFSDNLGRCVVMV GMPFPNIRSAELQEKMAYLDQTLPRAP  
 GQAPPGKALVENLCMKAVNQSIGRAIRHQKDFASVLLDQRYA RPPVLAKLP  
 AWIRARVEVKATFGPAIAAVQKFHREKSASS

TRTRPLE - GFP Tag - V

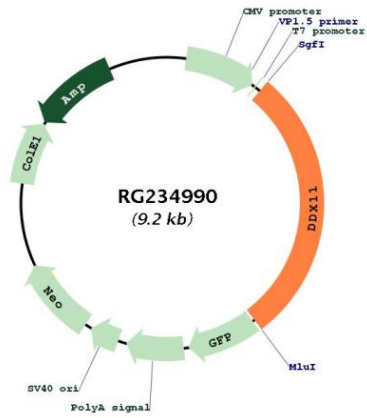
Restriction Sites: SgfI-MluI

Cloning Scheme:



<b>ACCN:</b>	NM_001257145
<b>ORF Size:</b>	2640 bp
<b>OTI Disclaimer:</b>	The molecular sequence of this clone aligns with the gene accession number as a point of reference only. However, individual transcript sequences of the same gene can differ through naturally occurring variations (e.g. polymorphisms), each with its own valid existence. This clone is substantially in agreement with the reference, but a complete review of all prevailing variants is recommended prior to use. <a href="#">More info</a>
<b>OTI Annotation:</b>	This clone was engineered to express the complete ORF with an expression tag. Expression varies depending on the nature of the gene.
<b>Components:</b>	The ORF clone is ion-exchange column purified and shipped in a 2D barcoded Matrix tube containing 10ug of transfection-ready, dried plasmid DNA (reconstitute with 100 ul of water).
<b>Reconstitution Method:</b>	<ol style="list-style-type: none"><li>1. Centrifuge at 5,000xg for 5min.</li><li>2. Carefully open the tube and add 100ul of sterile water to dissolve the DNA.</li><li>3. Close the tube and incubate for 10 minutes at room temperature.</li><li>4. Briefly vortex the tube and then do a quick spin (less than 5000xg) to concentrate the liquid at the bottom.</li><li>5. Store the suspended plasmid at -20°C. The DNA is stable for at least one year from date of shipping when stored at -20°C.</li></ol>
<b>RefSeq:</b>	<a href="#">NM_001257145.2</a>
<b>RefSeq Size:</b>	3737 bp
<b>RefSeq ORF:</b>	2643 bp
<b>Locus ID:</b>	1663
<b>UniProt ID:</b>	<a href="#">Q96FC9</a>
<b>Cytogenetics:</b>	12p11.21
<b>Protein Families:</b>	Stem cell - Pluripotency
<b>Gene Summary:</b>	DEAD box proteins, characterized by the conserved motif Asp-Glu-Ala-Asp (DEAD), are putative RNA helicases. They are implicated in a number of cellular processes involving alteration of RNA secondary structure such as translation initiation, nuclear and mitochondrial splicing, and ribosome and spliceosome assembly. Based on their distribution patterns, some members of this family are believed to be involved in embryogenesis, spermatogenesis, and cellular growth and division. This gene encodes a DEAD box protein, which is an enzyme that possesses both ATPase and DNA helicase activities. This gene is a homolog of the yeast CHL1 gene, and may function to maintain chromosome transmission fidelity and genome stability. Alternative splicing results in multiple transcript variants encoding distinct isoforms. [provided by RefSeq, Jul 2008]

Product images:



Circular map for RG234990