

Product datasheet for **RG234988**

R Cadherin (CDH4) (NM_001252338) Human Tagged ORF Clone

Product data:

Product Type:	Expression Plasmids
Product Name:	R Cadherin (CDH4) (NM_001252338) Human Tagged ORF Clone
Tag:	TurboGFP
Symbol:	R Cadherin
Synonyms:	CAD4; R-CAD; RCAD
Mammalian Cell Selection:	Neomycin
Vector:	pCMV6-AC-GFP (PS100010)
E. coli Selection:	Ampicillin (100 ug/mL)



[View online »](#)

ORF Nucleotide Sequence:

>RG234988 representing NM_001252338
 Red=Cloning site Blue=ORF Green=Tags(s)

TTTTGTAATACGACTCACTATAGGGCGGCCGGAATTCGTCGACTGGATCCGGTACCGAGGAGATCTGCC
 GCC**CGGATCGCC**

ATGAACGGCAGCTGTGACTTCATTCTCAGCGCCTCCTTTCTACCTGCTTTAAAGAAGTCAAGTTACAGCA
 GCTGTGTGGGGACCAAGGGGACACAATATGAGACCAACAGCATGGACTTCAAAGTTGGGGCAGATGGGAC
 AGTCTTCGCCACCCGGGAGCTGCAGTCCCTCCGAGCAGGTGGCGTTACCGGTGACTGCATGGGACAGC
 CAGACAGCAGAGAAATGGGACGCCGTGGTGCAGTGGTGGCCAGACCTCGTCCCGCACTCTGGAC
 ACAAGCCGCAGAAAGGAAAGAAGGTCTGGGCTCTGGACCCTCTCCGCCTCCGAAGGACACCCTGCTGCC
 GTGGCCCCAGCACCAGAACGCCAACGGGCTGAGGCGCGCAAACGGGACTGGGTATCCCGCCCATCAAC
 GTGCCCGAGAACTCGCGGGGCCCTTCCCGCAGCAGCTCGTGAGGATCCGGTCCGACAAAGACAATGACA
 TCCCCATCCGGTACAGCATCACGGGAGTGGGCGCCGACCAGCCCCCATGGAGGTCTTCAGCATTGACTC
 CATGTCCGGCCGGATGTACGTACAAGGCCATGGACCGGGAGGAGCACGCCTTTACCACCTCCGAGCC
 CACGCTGTGGACATGAATGGCAACAAGGTGGAGAACCCTATCGACTGTACATCTACGTATCGACATGA
 ATGACAACCGCCCTGAGTTCATCAACCAGGTCTACAACGGCTCCGTGGACGAGGGCTCCAAGCCAGGCAC
 CTACGTGATGACCGTACGGCCAACGATGCTGACGACAGCACCACGGCCAACGGGATGGTGCAGTACCGG
 ATCGTGACCCAGACCCACAGAGCCCGTCCAGAAATATGTTACCATCAACAGCGAGACTGGAGATATCG
 TCACAGTGGCGGCTGGCTGGACCGAGAGAAAGTTCAGCAGTACACAGTCATCGTTCAGGCCACAGATAT
 GGAAGGAAATCTCAACTATGGCCTCTCAAACACAGCCACAGCCATCATCACGGTACAGATGTGAATGAC
 AACCCGCCAGAAATTTACCGCCAGCACGTTTTCAGGGGAGGTCCCCGAAAACCGCGTGGAGACCGTGGTGC
 CAAACCTCACGGTATGGACCGAGATCAGCCCCACTCTCAAACCTGGAATGCCGTTTACCACATCATCG
 TGGGGATCCATCCGGGCACTTCAGCGTCCGACAGACCCCGTAACCAACGAGGGCATGGTACCCTGGTG
 AAGGCAGTACGACTACGAGCTCAACAGAGCTTTCATGCTGACAGTATGGTGTCCAACCAGCGCCCTGG
 CCAGCGGAATCCAGATGTCCTTCCAGTCCACGGCAGGGGTGACCATCTCCATCATGGACATCAACGAGGC
 TCCCTACTTCCCCTCAAACCACAAGCTGATCCGCCTGGAGGAGGGCGTCCCCCGGCACCGTGTGACC
 ACGTTTTTCAGCTGTGGACCCTGACCGGTTTCATGCAGCAGGCTGTGAGATACTCAAAGCTGTGACCCAG
 CGAGCTGGCTGCACATCAATGCCACCAACGGCCAGATCACACGGCGCAGTGTGGACCGTGTGACCTCT
 CTACACAAAAACAACGCTACGAGGCCACCTTCTGGCAGCTGACAATGGGATACCCCGGCCAGCGGC
 ACCGGGACCTCCAGATCTATCTCATTGACATCAACGACAACGCCCTGAGCTGTGCCAAGGAGGCGC
 AGATCTGCGAGAAGCCAACTGAACGCCATCAACATCACGGCGGCCGACGCTGACGTGACCCCAACAT
 CGGCCCTACGTCTTCGAGCTGCCCTTTGTCCCGCGGCCGTGCGGAAGAACTGGACCATCACCCGCTG
 AACGGTACTATGCCAACTCAGCTTGGCATCTGTACCTGGAGGCCGGGATGTATGACGTCCCATCA
 TCGTCACAGACTTGAAACCCTCCCCTGTCCAACACGTCCATCATCAAAGTCAAGGTGTGCCATGTGA
 TGACAACGGGGACTGCACCACATTGGCGCAGTGGCAGCGGTGGTCTGGGACCCGGTGCATCGTGGCC
 ATCCTCATCTGCATCCTCATCTGCTGACCATGGTCTGCTGTTTGTGATGTGGATGAAGCGCGGAGAGA
 AGGAGCGCCACACGAAGCAGCTGCTCATTGACCCCGAGGACGACTCCGCGACAACATCCTCAAGTATGA
 CGAGGAAGGCGGTGGCGAGGAGGACCAGGACTACGACCTCAGCCAGCTGCAGCAGCCGGAAGCCATGGGG
 CACGTGCCAAGCAAAGCCCTGGCGTGCCTCGCTGGATGAGCGGCCGGTGGGCGCTGAGCCCCAGTACC
 CGATCAGGCCATGGTGGCGCACCCAGGCGACATCGGTGACTTCATCAATGAGGGACTCCGCGCTGCTGA
 CAACGACCCACGGCACCCCTATGACTCCCTGCTGGTCTTCGACTACGAGGGGAGCGGCTCCACCGCA
 GGCTCCGTGAGCTCCCTGAACTCATCCAGTTCGGGGACCAAGACTACGATTACCTCAACGACTGGGGG
 CCAGATTAAGAAGCTGGCGGACATGTATGGAGGTGGTGAAGAGGAT

ACCGGTACGCGGCCGCTCGAG – GFP Tag – **GTTTAA**

Protein Sequence: >RG234988 representing NM_001252338
 Red=Cloning site Green=Tags(s)

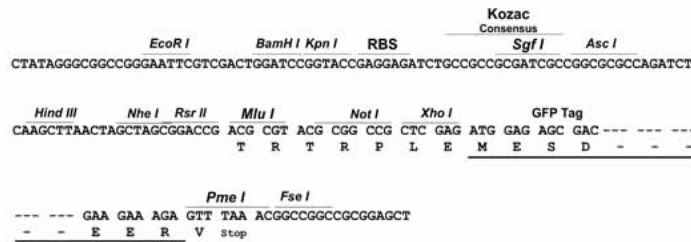
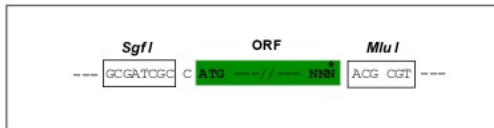
MNGSCDFILSASF L P C F K E V K F S S C V G T K G T Q Y E T N S M D F K V G A D G T V F A T R E L Q V P S E Q V A F T V T A W D S
 Q T A E K W D A V V R L L V A Q T S S P H S G H K P Q K G K K V V A L D P S P P P K D T L L P W P Q H Q N A N G L R R R R K R D W V I P P I N
 V P E N S R G P F P Q Q L V R I R S D K D N D I P I R Y S I T G V G A D Q P P M E V F S I D S M S G R M Y V T R P M D R E E H A S Y H L R A
 H A V D M N G N K V E N P I D L Y I Y V I D M N D N R P E F I N Q V Y N G S V D E G S K P G T Y V M T V T A N D A D D S T T A N G M V R Y R
 I V T Q T P Q S P S Q N M F T I N S E T G D I V T V A A G L D R E K V Q Q Y T V I V Q A T D M E G N L N Y G L S N T A T A I I T V T D V N D
 N P P E F T A S T F A G E V P E N R V E T V V A N L T V M D R D Q P H S P N W N A V Y R I I S G D P S G H F S V R T D P V T N E G M V T V V
 K A V D Y E L N R A F M L T V M V S N Q A P L A S G I Q M S F Q S T A G V T I S I M D I N E A P Y F P S N H K L I R L E E G V P P G T V L T
 T F S A V D P D R F M Q Q A V R Y S K L S D P A S W L H I N A T N G Q I T T A A V L D R E S L Y T K N N V Y E A T F L A A D N G I P P A S G
 T G T L Q I Y L I D I N D A P E L L P K E A Q I C E K P N L N A I N I T A A D A D V D P N I G P Y V F E L P F V P A A V R K N W T I T R L
 N G D Y A Q L S L R I L Y L E A G M Y D V P I I V T D S G N P L S N T S I I K V K V C P C D D N G D C T T I G A V A A A G L T G T A I V A
 I L I C I L I L L T M V L L F V M W M K R R E K E R H T K Q L L I D P E D D V R D N I L K Y D E E G G G E E D Q D Y D L S Q L Q Q P E A M G
 H V P S K A P G V R R V D E R P V G A E P Q Y P I R M V P H P G D I G D F I N E G L R A A D N D P T A P P Y D S L L V F D Y E G S G S T A
 G S V S S L N S S S S G D Q D Y D Y L N D W G P R F K L A D M Y G G G E E D

TRTRPLE - GFP Tag - V

Restriction Sites: SgfI-MluI

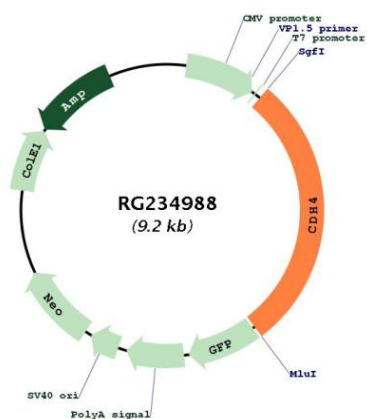
Cloning Scheme:

Cloning sites used for ORF Shuttling:



ACCN:	NM_001252338
ORF Size:	2637 bp
OTI Disclaimer:	The molecular sequence of this clone aligns with the gene accession number as a point of reference only. However, individual transcript sequences of the same gene can differ through naturally occurring variations (e.g. polymorphisms), each with its own valid existence. This clone is substantially in agreement with the reference, but a complete review of all prevailing variants is recommended prior to use. More info
OTI Annotation:	This clone was engineered to express the complete ORF with an expression tag. Expression varies depending on the nature of the gene.
Components:	The ORF clone is ion-exchange column purified and shipped in a 2D barcoded Matrix tube containing 10ug of transfection-ready, dried plasmid DNA (reconstitute with 100 ul of water).
Reconstitution Method:	<ol style="list-style-type: none">1. Centrifuge at 5,000xg for 5min.2. Carefully open the tube and add 100ul of sterile water to dissolve the DNA.3. Close the tube and incubate for 10 minutes at room temperature.4. Briefly vortex the tube and then do a quick spin (less than 5000xg) to concentrate the liquid at the bottom.5. Store the suspended plasmid at -20°C. The DNA is stable for at least one year from date of shipping when stored at -20°C.
RefSeq:	NM_001252338.2
RefSeq Size:	6343 bp
RefSeq ORF:	2640 bp
Locus ID:	1002
Cytogenetics:	20q13.33
Protein Families:	Transmembrane
Protein Pathways:	Cell adhesion molecules (CAMs)
Gene Summary:	This gene is a classical cadherin from the cadherin superfamily. The encoded protein is a calcium-dependent cell-cell adhesion glycoprotein comprised of five extracellular cadherin repeats, a transmembrane region and a highly conserved cytoplasmic tail. Based on studies in chicken and mouse, this cadherin is thought to play an important role during brain segmentation and neuronal outgrowth. In addition, a role in kidney and muscle development is indicated. Of particular interest are studies showing stable cis-heterodimers of cadherins 2 and 4 in cotransfected cell lines. Previously thought to interact in an exclusively homophilic manner, this is the first evidence of cadherin heterodimerization. Three transcript variants encoding different isoforms have been found for this gene. [provided by RefSeq, Nov 2011]

Product images:



Circular map for RG234988