

## Product datasheet for **RG234985**

### Thyroid Peroxidase (TPO) (NM\_001206745) Human Tagged ORF Clone

#### Product data:

Product Type:	Expression Plasmids
Product Name:	Thyroid Peroxidase (TPO) (NM_001206745) Human Tagged ORF Clone
Tag:	TurboGFP
Symbol:	Thyroid Peroxidase
Synonyms:	MSA; TDH2A; TPX
Mammalian Cell Selection:	Neomycin
Vector:	pCMV6-AC-GFP (PS100010)
E. coli Selection:	Ampicillin (100 ug/mL)



[View online »](#)

**ORF Nucleotide Sequence:**

>RG234985 representing NM\_001206745  
 Red=Cloning site Blue=ORF Green=Tags(s)

TTTTGTAATACGACTCACTATAGGGCGGCCGGGAATTCGTCGACTGGATCCGGTACCGAGGAGATCTGCC  
 GCC**GCGATCGCC**

ATGAGAGCGCTCGCTGTGCTGTCTGTACGCTGGTTATGGCCTGCACAGAAGCCTTCTCCCTTCACT  
 CGAGAGGGAAAGAACTCCTTTGGGGAAAGCCTGAGGAGTCTCGTGTCTCTAGCGTCTGGAGGAAAGCAA  
 GCGCCTGGTGGACACCGCCATGTACGCCACGATGCAGAGAAACCTCAAGAAAAGAGGAATCCTTTCTCCA  
 GCTCAGCTTGTCTTTTTCAAACCTCTGAGCCAACAAGCGGAGTGATTGCCCGAGCAGCAGAGATAA  
 TGGAAACATCAATAACAAGCGATGAAAAGAAAAGTCAACCTGAAAACCTCAACAATCACAGCATCCAACGGA  
 TGCTTTATCAGAAGATCTGCTGAGCATCATTGCAAACATGTCTGGATGTCTCCCTTACATGCTGCCCCCA  
 AAATGCCCAAACACTTGCCTGGCGAACAATACAGGCCCATCACAGGAGCTTGAACAACAGAGACCACC  
 CCAGATGGGGCGCCTCCAACACGGCCCTGGCACGATGGCTCCCTCCAGTCTATGAGGACGGCTTCAGTCA  
 GCCCGAGGCTGGAACCCCGCTTCTTGTACAACGGGTTCCCACTGCCCCGGTCCGGGAGGTGACAAGA  
 CATGTCTATTCAAGTTTCAAATGAGGTTGTACAGATGATGACCGTATTCTGACCTCCTGATGGCATGGG  
 GACAATACATCGACCACGACATCGCGTTACACCACAGAGCACCAGCAAAGCTGCCTTCGGGGGAGGGGC  
 TGACTGCCAGATGACTTGTGAGAACAAAACCCATGTTTTCCCATACAACCTCCCGGAGGAGGCCCGGCCG  
 GCCGCGGGCACCCTGTCTGCCCTTCTACCGCTCTTCGGCCGCTGCGGCACCGGGGACCAAGGCGCGC  
 TCTTTGGGAACCTGTCCACGGCAACCCGCGCAGCAGATGAACGGGTTGACCTCGTTCTGGACCGCTC  
 CACCGTGTATGGCAGTCCCCGGCCCTAGAGAGGCAGCTGCGGAACCTGGACCAGTCCCGAAGGGCTGCTC  
 CGCGTCCACGCGCGCCTCCGGGACTCCGGCCGCGCCTACCTGCCCTTCGTGCCCCACGCGCGCTCGCG  
 CCTGTGCGCCCGAGCCCGCATCCCGGAGAGACCCCGGGCCCTGCTTCTGCGCCGAGACGCGCCGCGC  
 CAGCGAGTCCCCTCCCTGACGGCACTGCACACGCTGTGGCTGCGCGAGCACAACCGCTGGCCGCGCGC  
 CTAAGGCCCTCAATGCGCACTGGAGCGCGGACGCGGTGTACCAGGAGGCGCGAAGGTCGTGGGCGCTC  
 TGCACCAGATCATCACCTGAGGGATTACATCCCCAGGATCCTGGGACCCGAGGCCTTCCAGCAGTACGT  
 GGGTCCCTATGAAGGCTATGACTCCACCGCCAACCCCACTGTGTCCAACGTGTTCTCCACAGCCGCTTC  
 CGCTTCGGCCATGCCACGATCCACCCGCTGGTGGAGGAGTGGACGCCAGCTTCCAGGAGCACCAGGACC  
 TGCCCGGGCTGTGGCTGCACCAGGCTTTCTTACGCCATGGACATTACTCCGTGGAGGTTACAATGAGTG  
 GAGGGAGTTCTGCGGCCGCTGCCTCGCTGGAGACCCCGCTGACCTGAGCACAGCCATCGCCAGCAGGAGC  
 GTGGCCGACAAGATCCTGGACTTGTACAAGCATCTGACAACATCGATGTCTGGCTGGGAGGCTTAGCTG  
 AAAACTTCCCTCCCAGGGCTCGGACAGGGCCCTGTTTGCTGTCTCATTGGGAAGCAGATGAAGGCTCT  
 GCGGGACGGTACTGGTTTTGGTGGGAGAACAGCCACGTCTTACGGATGCACAGAGGCGTGAGCTGGAG  
 AAGCACTCCCTGTCTCGGGTCACTGTGACAACACTGGCCTCACCAGGGTGCCCATGGATGCCTTCCAAG  
 TCGGCAAATCCCAGAAGACTTTGAGTCTTGTGACAGCATCACTGGCATGAACCTGGAGGCTGGAGGGA  
 AACCTTTCCTCAAGACGACAAGTGTGGCTTCCAGAGAGCGTGGAGAATGGGGACTTTGTGCACTGTGAG  
 GAGTCTGGGAGGCGCGTGTGGTATTCTGCGGCACGGGTATGAGCTCCAAGCCGGGAGCAGCTCA  
 CTTGCACCCAGGAAGGATGGGATTTCCAGCCTCCCCTCGCAAAGATGTGAACGAGTGTGCAGACGGTGC  
 CCACCCCCCTGCCACGCTCTGCGAGGTGCAGAAACACCAAAGGCGGCTTCCAGTGTCTGCGCGGAC  
 CCTACGAGTTAGGAGACGATGGGAGAACCTGCGTAGACTCCGGGAGGCTCCCTCGGGTACTTGGATCT  
 CCATGTCGCTGGCTGCTGTGCTGATCGGAGGCTTCGCAGGTCTCACCTCGACGGTATTTGCAGGTGGAC  
 ACGCACTGGCACTAAATCCACACTGCCATCTCGGAGACAGGCGGAGGAACTCCCAGCTGAGATGCGGA  
 AAGCACCAGGCGTAGGGACCTCACCGCAGCGGCCGAGCTCAGGACTCGGAGCAGGAGAGTGTGGGA  
 TGGAAGGCCGGGATACTCACAGGCTGCCGAGAGCCCTC

AC**GCGGCCGCT**CGAG - GFP Tag - GTTTAA

**Protein Sequence:** >RG234985 representing NM\_001206745  
 Red=Cloning site Green=Tags(s)

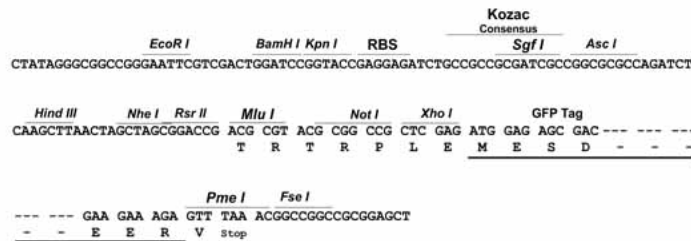
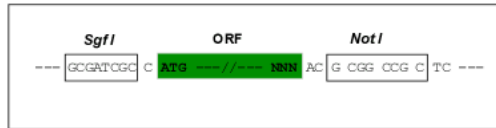
MRALAVLSVTLVMACTEAFPPFISRGKELLWGKPEESRVSSVLEESKRLVDTAMYATMQRNLKRGILSP  
 AQLLSFSKLPPTSGVIARAAEIMETSIQAMKRVNLKTQQSQHPTDALSEDLLSIANMSGCLPYMLPP  
 KCPNTCLANKYRPITGACNNRDHPRWGASNTALARWLPVYEDGF SQPRGWNPGFLYNGFPLPPVREVTR  
 HVIQVSNEVVTD DDDRYSDLLMAWGQYIDHDIAFTPQSTSKAAFFGGGADCQMTCEQNPCFP IQLPEEARP  
 AAGTACLPHYRSSAACGTGDQGFNLSTANPRQMQMNGLT SFLDASTVYGSSPALERQLRNWTS AEGLL  
 RVHARLRDGRAYLPFVPPRPAACAPEPGIPGETRGPCLAGDGRASEVPSLTALHTLWLREHNRLAAA  
 LKALNAHWSADAVYQEARVVGALHQIITLRDYIPRILGPEAFQYVGPYEGYDSTANPTVSNVSTAAF  
 RFGHATIHPLVRRLDASFQHPDL PGLWLHQAFFSPWTLRGGYNEWREFCGLPRLETPADLSTAIASRS  
 VADKILDLYKHPDNIDVWLGGLAENFLPRARTGPLFACLIGKQMKALRDGDWFWWENSHVFTAQRRELE  
 KHSLSRVICDNTGLTRVPMDAFQVGKFPEDFESCD SITGMNLEAWRETFPQDDKCGFPESVENGDFVHCE  
 ESGRRVLVYSCRHYELQGREQLTCTQEGWDFQPPLCKDVNECADGAHPPCHASARCRNTKGGFQCLCAD  
 PYELGDDGRTCVDSGRLPRVTWISMSLAALLIGGFAGLSTVICRWTRTGTKSTLPISETGGGTPELRG  
 KHQAVGTSPQRAAAQDSEQESAGMEGRDTHRLPRAL

TRPLE - GFP Tag - V

**Restriction Sites:** SgfI-NotI

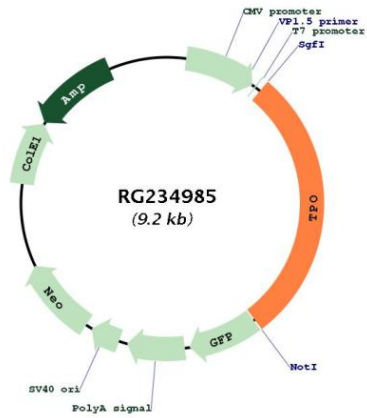
**Cloning Scheme:**

Cloning sites used for ORF Shutting:



<b>ACCN:</b>	NM_001206745
<b>ORF Size:</b>	2628 bp
<b>OTI Disclaimer:</b>	The molecular sequence of this clone aligns with the gene accession number as a point of reference only. However, individual transcript sequences of the same gene can differ through naturally occurring variations (e.g. polymorphisms), each with its own valid existence. This clone is substantially in agreement with the reference, but a complete review of all prevailing variants is recommended prior to use. <a href="#">More info</a>
<b>OTI Annotation:</b>	This clone was engineered to express the complete ORF with an expression tag. Expression varies depending on the nature of the gene.
<b>Components:</b>	The ORF clone is ion-exchange column purified and shipped in a 2D barcoded Matrix tube containing 10ug of transfection-ready, dried plasmid DNA (reconstitute with 100 ul of water).
<b>Reconstitution Method:</b>	<ol style="list-style-type: none"><li>1. Centrifuge at 5,000xg for 5min.</li><li>2. Carefully open the tube and add 100ul of sterile water to dissolve the DNA.</li><li>3. Close the tube and incubate for 10 minutes at room temperature.</li><li>4. Briefly vortex the tube and then do a quick spin (less than 5000xg) to concentrate the liquid at the bottom.</li><li>5. Store the suspended plasmid at -20°C. The DNA is stable for at least one year from date of shipping when stored at -20°C.</li></ol>
<b>RefSeq:</b>	<a href="#">NM_001206745.1</a> , <a href="#">NP_001193674.1</a>
<b>RefSeq Size:</b>	2980 bp
<b>RefSeq ORF:</b>	2631 bp
<b>Locus ID:</b>	7173
<b>UniProt ID:</b>	<a href="#">P07202</a>
<b>Cytogenetics:</b>	2p25.3
<b>Protein Families:</b>	Druggable Genome, ES Cell Differentiation/IPS, Transmembrane
<b>Protein Pathways:</b>	Autoimmune thyroid disease, Cytokine-cytokine receptor interaction, Hematopoietic cell lineage, Jak-STAT signaling pathway, Metabolic pathways, Tyrosine metabolism
<b>Gene Summary:</b>	This gene encodes a membrane-bound glycoprotein. The encoded protein acts as an enzyme and plays a central role in thyroid gland function. The protein functions in the iodination of tyrosine residues in thyroglobulin and phenoxy-ester formation between pairs of iodinated tyrosines to generate the thyroid hormones, thyroxine and triiodothyronine. Mutations in this gene are associated with several disorders of thyroid hormonogenesis, including congenital hypothyroidism, congenital goiter, and thyroid hormone organification defect IIA. Multiple transcript variants encoding distinct isoforms have been identified for this gene, but the full-length nature of some variants has not been determined. [provided by RefSeq, May 2011]

Product images:



Circular map for RG234985