

Product datasheet for **RG234970**

TAOK1 (NM_025142) Human Tagged ORF Clone

Product data:

Product Type:	Expression Plasmids
Product Name:	TAOK1 (NM_025142) Human Tagged ORF Clone
Tag:	TurboGFP
Symbol:	TAOK1
Synonyms:	hKFC-B; hTAOK1; KFC-B; MAP3K16; MARKK; PSK-2; PSK2; TAO1
Mammalian Cell Selection:	Neomycin
Vector:	pCMV6-AC-GFP (PS100010)
E. coli Selection:	Ampicillin (100 ug/mL)



[View online »](#)

ORF Nucleotide
Sequence:

>RG234970 representing NM_025142
Red=Cloning site Blue=ORF Green=Tags(s)

TTTTGTAATACGACTCACTATAGGGCGGCCGGGAATTCGTCGACTGGATCCGGTACCGAGGAGATCTGCC
GCCCGCATCGCC

ATGCCATCAACTAACAGAGCAGGCAGCCTGAAGGACCCTGAAATTGCAGAGCTCTTCTTCAAAGAAGATC
CAGAGAAGCTCTTACAGATCTCAGAGAAATTGGCCATGGAAGCTTTGGAGCAGTGATTTTGCAGGAGA
TGTGCGTACCAATGAAGTGGTGGCCATCAAGAAAATGTCTTATAGTGGAAGCAGTCTACTGAGAAATGG
CAGGATATTATTAAGGAAGTCAAGTTTCTACAAAATAAAAACATCCCAACAGTATAGAATACAAAGGCT
GTTATTTACGTGAACACACAGCATGGCTTGAATGGAATATTGTTTAGGATCTGCTTCGGATTTACTAGA
AGTTCACAAAAAGCCATTACAAGAAGTGGAAATAGCAGCAATTACACATGGTGTCTTCCAGGATTAGCC
TACTTACATTCTCATACTATGATTCATAGAGATATCAAAGCAGGAAATATCCTTCTGACAGAACCAGGCC
AGGTGAAACTTGCTGACTTTGGCTCTGCTTCCATGGCATCACCTGCCAATTCCTTTGTGGGAACGCCGTA
TTGGATGGCCCCAGAAGTAATTTAGCCATGGATGAAGGACAATATGATGGCAAAGTAGATGTGTGGTCT
CTTGGAATAACATGTATTGAACTAGCGGAAAGGAGCCTCCTTTATTTAATATGAATGCAATGAGTGCC
TATATCAGATAGCCAAAATGAATCCCCTACACTACAGTCTAATGAATGGTCTGATTATTTTCGCAACT
TGTAGATTCTTGCTCCAGAAAATCCCTCAAGATCGACCTACATCAGAGGAACTTTAAAGCACATATTT
GTTCTTCGGGAGCGCCCTGAAACCGTGTTAATAGATCTCATTAGAGGACAAAGGATGCAGTAAGAGAGC
TGGACAATCTGCAGTATCGAAAGATGAAGAAATCCTTTTCCAGGAGGCACATAATGGACCAGCAGTAGA
AGCACAGGAAGAAGAAGAGGAACAAGATCATGGTGTGGCCGGACAGGAACAGTTAATAGTGTGGAAAGT
AATCAATCCATTTCCAGCATGTCCATCAGTGCCAGCAGCCAAAGCAGTAGTGTAAACAGTCTTCCAGATG
TCTCAGATGACAAGAGTGAGCTAGACATGATGGAGGGAGACCACACAGTGTCTAACAGTTCTGTTAT
CCATTTAAAACCCAGAGGAAGAAAATTACAGAGAAGAGGGAGATCCTAGAACAAGAGCATCAGATCCACAA
TCTCCACCCCAAGTATCTCGTCAAAAATCACACTATCGTAATCGAGAACCTTTGCTACTATACGGACAG
CATCACTGGTTACGAGGCAAATGCAAGAACATGAGCAGGACTCTGAGCTTAGAGAACAAATGTCTGGCTA
TAAGCGAATGAGGCGACAACATCAAAGCAACTGATGACTCTGGAAAACAAGCTAAAGGCTGAGATGGAT
GAACATCGCCTCAGATTAGACAAAGATCTTGAACCTCAGCGTAACAATTTTGTGCGAGAAATGGAGAAAC
TTATCAAGAAACACCAGGCTGCCATGGAGAAAGAGGCTAAAGTGTGTCCAATGAAGAGAAAAAATTTCA
GCAACATATTCAGGCCAACAGAAAGAAAGAACTGAATAGTTTTCTCGAGTCCAGAAAAGAGAGTATAAA
CTTCGAAAAGAGCAGCTTAAAGAGTCTAAAGAACTCCAAATAAAAAGCAGTTTCAGGATACCTGCAAAA
TCCAAACCAGACAGTACAAGCATTAAAGAAATCACCTGCTGGAGACTACACCAAAGAGTGAGCACAAAGC
TGTTCTGAAACGGCTCAAGGAGGAACAGACCCGGAAATTAGTATCTTGGCTGAGCAGTATGATCACAGC
ATTAATGAAATGCTCTCCACACAAGCCCTGCGTTTGGATGAAGCACAGGAAGCAGAGTGCCAGGTTTTGA
AGATGCAGCTGCAGCAGGAAGTGGAGCTGTTGAATGCGTATCAGAGCAAAATCAAGATGCAAGCTGAGGC
ACAACATGATCGAGAGCTTCGCGAGCTTGAACAGAGGGTCTCCCTCCGGAGGGCACTCTTAGAACAAAAG
ATTGAAGAAGAGATGTTGGCTTTGCAGAATGAGCGCACAGAACGAATACGAAGCCTGTTGGAACGTCAAG
CCAGAGAGATTGAAGCTTTTACTCTGAAAGCATGAGACTAGGTTTTAGTAATATGGTCTTTCTAATCT
CTCCCCGAGGCAATTCAGCCACAGCTACCCGGGAGCTTCTGTTGGTACACAAACCCTACTGGGGGTCCA
GGACCTACTGGGTCATCCCATGGGTGGCCACCACAAGCTTGGGGCCATCCAATGCAAGGTGGACCCC
AGCCATGGGGTCAACCTTCAAGGCAATGCAAGGGGTACCTCGAGGTAGCAGTATGGGAGTCCGCAATAG
CCCCAGGCTCTGAGCGGACAGCTTCTGGGGACGGACGGAGCAGGTCATGAGCAGAAGCACGAGTGTC
ACTTCACAAATATCCAATGGGTACACATGTCTTATACA

ACGCGTACGCGGCCGCTCGAG - GFP Tag - GTTTAA

Protein Sequence: >RG234970 representing NM_025142
Red=Cloning site Green=Tags(s)

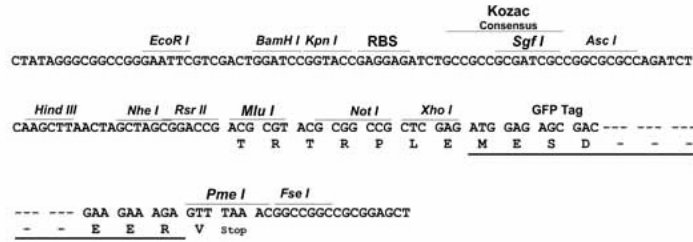
MPSTNRAGSLKDPEIAELFFKEDPEKLFDTLREIGHGSFGAVYFARDVRTNEVVAIKKMSYSGKQSTEKW
QDIIKEVKFLQRIKHPNSIEYKGCYLREHTAWL VMEYCLGSADLLEVHKKPLQEVEIAAITHGALQGLA
YLHSHTMIHRDIKAGNILLTEPGQVKLADFGSASMASPANSFVGTPYWMAPEVILAMDEGQYDGKVDVWS
LGITCIELAERKPPPLFNMNAMSALYHIAQNESPTLQSNEWSDYFRNFVDSCLQKIPQDRPTSEELKHF
VLRRPETVLIDLIQRTKDAVRELDNLQYRKMKKLLFQEAHNGPAVEAQEEEEEQDHGVGRTGTVNSVGS
NQSIPMSISASSQSSSVNSLPDVSDDKSELDMMEGDHTVMSNSSVIHLKPEEENYREEGDPRTASDPQ
SPPQVSRHKSHYRNREHFATIRTASLVTRQMQEHEQDSELREQMSGYKRMRRQHQQQLMTLENKKAEMD
EHRLRLDKDLETQRNFAAEMEKL IKKHQAAMEKEAKVMSNEEKKFQQHIQAQQKELNSFLESQKREYK
LRKEQLKESKELQIKKQFQDTCKIQTRQYKALRNHLETPKSEHKAVLKRLKEEQTRKLAILAEQYDHS
INEMLSTQALRLDEAQEAECQVLKMQLQQELELLNAYQSKIKMQAEAQHDRELRELEQRVSLRRALLEQK
IEEEMLALQNERTERIRSLLEQAREIEAFDSESMRLGFSNMVLSNLSPEAFSHSYPGASGWSHNPTGGP
GPHWGHMGGPPQAWGHPMQGGPQWGHPSGPMQGVPRGSSMGVRNSPQALRRTASGGRTEQGMSRSTSV
TSQISNGSHMSYT

TRTRPLE - GFP Tag - V

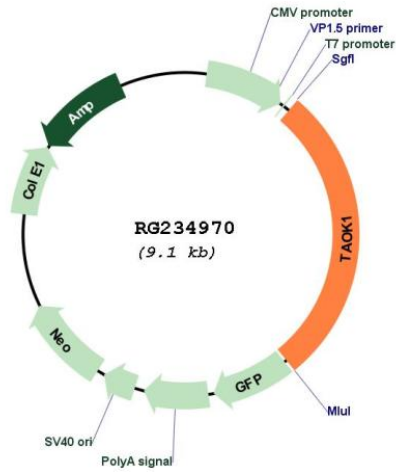
Restriction Sites: Sgfl-MluI

Cloning Scheme:

Cloning sites used for ORF Shutting:



Plasmid Map:



ACCN:	NM_025142
ORF Size:	2559 bp
OTI Disclaimer:	The molecular sequence of this clone aligns with the gene accession number as a point of reference only. However, individual transcript sequences of the same gene can differ through naturally occurring variations (e.g. polymorphisms), each with its own valid existence. This clone is substantially in agreement with the reference, but a complete review of all prevailing variants is recommended prior to use. More info
OTI Annotation:	This clone was engineered to express the complete ORF with an expression tag. Expression varies depending on the nature of the gene.
Components:	The ORF clone is ion-exchange column purified and shipped in a 2D barcoded Matrix tube containing 10ug of transfection-ready, dried plasmid DNA (reconstitute with 100 ul of water).
Reconstitution Method:	<ol style="list-style-type: none">1. Centrifuge at 5,000xg for 5min.2. Carefully open the tube and add 100ul of sterile water to dissolve the DNA.3. Close the tube and incubate for 10 minutes at room temperature.4. Briefly vortex the tube and then do a quick spin (less than 5000xg) to concentrate the liquid at the bottom.5. Store the suspended plasmid at -20°C. The DNA is stable for at least one year from date of shipping when stored at -20°C.
RefSeq:	NM_025142.1 , NP_079418.1
RefSeq Size:	11652 bp
RefSeq ORF:	2562 bp
Locus ID:	57551
UniProt ID:	Q7L7X3
Cytogenetics:	17q11.2
Protein Families:	Druggable Genome, Protein Kinase
Protein Pathways:	MAPK signaling pathway

Gene Summary:

Serine/threonine-protein kinase involved in various processes such as p38/MAPK14 stress-activated MAPK cascade, DNA damage response and regulation of cytoskeleton stability. Phosphorylates MAP2K3, MAP2K6 and MARK2. Acts as an activator of the p38/MAPK14 stress-activated MAPK cascade by mediating phosphorylation and subsequent activation of the upstream MAP2K3 and MAP2K6 kinases. Involved in G-protein coupled receptor signaling to p38/MAPK14. In response to DNA damage, involved in the G2/M transition DNA damage checkpoint by activating the p38/MAPK14 stress-activated MAPK cascade, probably by mediating phosphorylation of MAP2K3 and MAP2K6. Acts as a regulator of cytoskeleton stability by phosphorylating 'Thr-208' of MARK2, leading to activate MARK2 kinase activity and subsequent phosphorylation and detachment of MAPT/TAU from microtubules. Also acts as a regulator of apoptosis: regulates apoptotic morphological changes, including cell contraction, membrane blebbing and apoptotic bodies formation via activation of the MAPK8/JNK cascade.[UniProtKB/Swiss-Prot Function]