

## Product datasheet for **RG234967**

### EPB4IL2 (EPB41L2) (NM\_001199389) Human Tagged ORF Clone

#### Product data:

Product Type:	Expression Plasmids
Product Name:	EPB4IL2 (EPB41L2) (NM_001199389) Human Tagged ORF Clone
Tag:	TurboGFP
Symbol:	EPB4IL2
Synonyms:	4.1-G; 4.1G
Mammalian Cell Selection:	Neomycin
Vector:	pCMV6-AC-GFP (PS100010)
E. coli Selection:	Ampicillin (100 ug/mL)



[View online »](#)

**ORF Nucleotide Sequence:**

>RG234967 representing NM\_001199389  
 Red=Cloning site Blue=ORF Green=Tags(s)

TTTTGTAATACGACTCACTATAGGGCGGCCGGAATTCGTCGACTGGATCCGGTACCGAGGAGATCTGCC  
 GCC**CGGATCGCC**

ATGACTACTGAAGTAGGCTCTGTGTCTGAAGTGAAGAAGGACTCTAGCCAGTTAGGAACAGATGCAACCA  
 AGGAAAAACCTAAAGAAGTAGCAGAAAAATCAGCAGAATCAGTCTTCCGATCCAGAGGAGGAAAAAGTTCC  
 CCAGCCACCTCCTGCAGCTGAAAGCCAAAGTAGTCTACGCCGCCAGAAGAGAGAGAAAGGAAACATCGGAG  
 AGCAGGGGTATTTCTCGTTTCATACCGCCATGGCTTAAGAAGCAAAAGTCATATACCTTAGTAGTGGCCA  
 AAGATGGAGGAGATAAAAAAGAGCTACCCAAGCTGTTGTTGAAGAACAGGTCTTAGATAAAGAGGAACC  
 CCTTCCAGAAGAACAGAGACAGGCTAAGGGTGTGCTGAAGAAATGGCTCAGAAGAAACAAGAGATTA  
 GTTGAAGTCAAGGAAGAAAAACCTCAGTGAGCAAGGAAGAAAAACCTCAGTGAGCAAAGTGGAGATGC  
 AGCCTACTGAATTAGTAAGTAAAGAGAGAGAAGAGAAGGTAAGAAACACAGGAAGACAAATTAGAAGG  
 AGGAGCAGCAAAAAGGGAGACCAAGGAAGTGCAGACCAATGAGCTGAAAGCAGAGAAGGCATCTCAAAA  
 GTCACCAAGAAGACCAAACTGTCCAGTGTAAAGTGACCTCTTAGATGGCACCGAATACAGCTGTGACC  
 TGGAGAAACATGCCAAGGACAAGTGTATTGACAAAGTGTGTGAACACCTCAATCTCTTGGAGAAAGA  
 CTACTTTGGACTTTTGTTCAGGAAAGCCCTGAGCAGAAAAACTGGTTAGATCCTGCTAAAGAAATAAG  
 AGACAACCTGAGAAACCTTCCATGGCTATTCACCTTTAATGTGAAGTTTTATCCTCCTGATCCTTCTCAAT  
 TGACTGAAGATATCACCAGATACTTCTGTGCCTTCAGCTCCGGCAGGACATTGCCTCTGGCCCGCTGCC  
 CTGCTCTTTGTGACTCATGCTCTCCTGGGATCCTACACCCTGCAGGCTGAACCTGGTACTATGACCCA  
 GAAGAACATGGCAGCATCGACCTCAGTGAATCCAGTTTGCCCTACTCAGACTAAGGAGCTGGAAGAGA  
 AGGTGCAGAGCTGCACAAAACCCACAGGGCTTATCGCCAGCACAAGCTGATCCAGTCTTAGAAAA  
 TGCAAAGAGGCTTCCATGTATGGTGTGACCTACATCATGCCAAGGACTCAGAAGGTGTGGACATCAAG  
 CTGGGCGTGTGTGCTAATGGACTTCTATTACAAAGACAGACTGCGAATCAATCGTTTTGCTTGGCCGA  
 AAATCTAAAAATTTCTATAAACCGAGTAACTTCTACATTAAGTCAAGCCGAGAGCTGGAACAGTT  
 TGAGAGTACCATTGGATTCAAACGCCAAACCACCGGCGAGGAAAGACTATGGAAAGTGTGCGTGGAG  
 CATCATACTTTCTACAGGCTTGTTCCTCAGAGCAGCCACCAAAAGCCAAGTTCTGACCTTGGGGTCCA  
 AATTTTCGCTATAGTGGCCGACCCAAGCACAGACCCGCGCAGGCCAGCACCCTCATAGATAGGCCAGCACC  
 AACTTTGAGCGCACTTCTAGTAAACGGGTCTCCAGGAGTCTAGATGGAGCTCCGATTGGTGTATGGAC  
 CAAAGTCTTATGAAGATTTTCTGGCGTGTGGGGAGATTTGAGCCTATGGACCTGGACTTGTGACGA  
 TTGCCGTGGTACAAGATGGGGACGGCAGGAGGGAAGTGAAGGCCAACTAAAGCCCACATTTGACGCT  
 CATTGAAGGAAAGAGTTCACATGAGACTCTGAATATAGTGGAGGAGAAGAAGCGGGCAGAGGTTGGGAAA  
 GACGAAAGAGTAATCACAGAAGAAATGAATGGTAAAGAGATATCACCTGGGAGTGGTCTGGGGAGATTC  
 GTAAGGTGGAGCCTGTGACACAAAAAGACTCCACCTCCCTGTCTTCTGAGAGCAGCAGCAGCAGTGA  
 GAGTGAGGAGGAAGACGTGGGAGAGTACCGTCCCACCACCGAGTGACCGAGGGCACCATCAGGGAGGAA  
 CAGGAGTATGAAGAAGAGGTGGAGGAAGAACCCTCCGCGCCAGCCAAGCCACCAGTGGTAAAAACAGAGA  
 TGGTAAACAATTTCTGATGCCTCACAAGGACAGAAATCTCCACCAAGGAAGTCCCATTGTCCAAACTGA  
 ACCAAAACCATCACATATGAGTCTCCACAGATTGATGGCGGGGCTGGTGGTATTTCGGGCACGTTACTG  
 ACCGCACAAACCATCACATCTGAGTCCGTGTCAACAACGACAACACACATCACAAGACTGTAAGAG  
 GTGGAATTTCTGAAACAAGAATTGAGAAACGATTGTGATCACAGGAGATGGAGATATTGATCATGACCA  
 GGCCTGGCTCAGGCGATCAGGGAAGCCAGAGAGCAGCACCCTGACATGTCGGTCAACAAGAGTGGTGGTA  
 CACAAAGAACAGAGTTGGCTGAGGAAGGGGAAGAT

**ACGCGTACGCGGCCGCTCGAG** - GFP Tag - GTTTAA

**Protein Sequence:** >RG234967 representing NM\_001199389  
 Red=Cloning site Green=Tags(s)

```

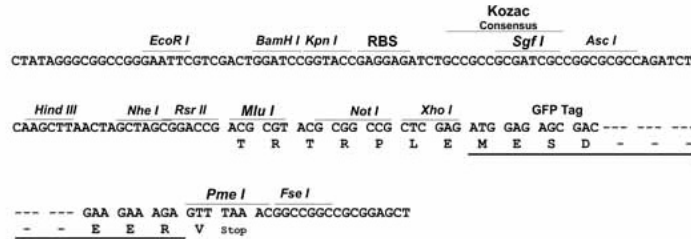
MTTEVGSVSEVKKDSSQLGTDATKEKPKEVAENQQNQSSDPEEEKGSQPPPAESQSSLRQKREKETSE
SRGISRFIPPWLKKQSYTLVAKDGGDKKEPTQAVVEEQVLDKEEPLPEEQRAKGAEEEMAQKKQEIK
VEVKEEKPSVSKEEKPSVSKVEMQPTLVSKEREEKVKETQEDKLEGGAAKRETKEVQTNELKAEKASQK
VTKKTKTVQCKVTLDDGTEYSCDLEKHAKGQVLFDKVCEHLNLEKDYFGLLFQESPEQKNWLDPAKEIK
RQLRNLPWLFTFNVKFYPPDPSQLTEDITRYFLCLQLRQDIASGRLPSCFVTHALLGSYTLQAEELGDYDP
EEHGSIDLSEFQFAPTQTKELEEKVAELHKTHRGLSPAQADSQFLENAKRLSMYGVDLHHAADSEGVDIK
LGVCANGLLIYKDRLRINRFAWPKILKISYKRSNFYIKVRPAELEQFESTIGFKLPNHRAAKRLWKVCVE
HHTFYRLVSPEQPPKAKFLTLGSKFRYSGRTQAQTRQASTLIDRPAPHFERTSSKRVSRLDGAPIGVMD
QSLMKDFPGAAGEISAYGPGLVIAVVQDGDGRREVRSPTKAPHLQLIEGKSSHETLNIVEEKKRAEVGK
DERVITEEMNGKEISPGSGPGEIRKVEPVTQKSTLSSESSSSSESEEEEDVGEYRPHHRVTEGTIREE
QEYEEEEVEEPRPAAKPPVVKTEMVTISDASQRTISTKEVPIVQTETKITIYESPOIDGGAGGDSGTL
TAQTITSESVSTTTTTHITKTVKGGISETRIEKRIVITGDGDIDHDQALAQAIAREAQHPDMSVTRVVV
HKETELAEED
  
```

TRTRPLE - GFP Tag - V

**Restriction Sites:** Sgfl-Mlul

**Cloning Scheme:**

Cloning sites used for ORF Shutting:


**ACCN:** NM\_001199389

**ORF Size:** 2556 bp

**OTI Disclaimer:** The molecular sequence of this clone aligns with the gene accession number as a point of reference only. However, individual transcript sequences of the same gene can differ through naturally occurring variations (e.g. polymorphisms), each with its own valid existence. This clone is substantially in agreement with the reference, but a complete review of all prevailing variants is recommended prior to use. [More info](#)
**OTI Annotation:** This clone was engineered to express the complete ORF with an expression tag. Expression varies depending on the nature of the gene.

**Components:** The ORF clone is ion-exchange column purified and shipped in a 2D barcoded Matrix tube containing 10ug of transfection-ready, dried plasmid DNA (reconstitute with 100 ul of water).

**Reconstitution Method:**

1. Centrifuge at 5,000xg for 5min.
2. Carefully open the tube and add 100ul of sterile water to dissolve the DNA.
3. Close the tube and incubate for 10 minutes at room temperature.
4. Briefly vortex the tube and then do a quick spin (less than 5000xg) to concentrate the liquid at the bottom.
5. Store the suspended plasmid at -20°C. The DNA is stable for at least one year from date of shipping when stored at -20°C.

**RefSeq:** [NM\\_001199389.1](#), [NP\\_001186318.1](#)

**RefSeq Size:** 4051 bp

**RefSeq ORF:** 2558 bp

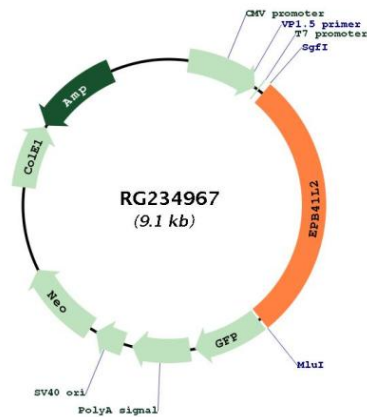
**Locus ID:** 2037

**Cytogenetics:** 6q23.1-q23.2

**Protein Pathways:** Tight junction

**Gene Summary:** Required for dynein-dynactin complex and NUMA1 recruitment at the mitotic cell cortex during anaphase (PubMed:23870127).[UniProtKB/Swiss-Prot Function]

**Product images:**



Circular map for RG234967