

Product datasheet for **RG234966**

EPB4IL2 (EPB41L2) (NM_001199388) Human Tagged ORF Clone

Product data:

Product Type:	Expression Plasmids
Product Name:	EPB4IL2 (EPB41L2) (NM_001199388) Human Tagged ORF Clone
Tag:	TurboGFP
Symbol:	EPB4IL2
Synonyms:	4.1-G; 4.1G
Mammalian Cell Selection:	Neomycin
Vector:	pCMV6-AC-GFP (PS100010)
E. coli Selection:	Ampicillin (100 ug/mL)



[View online »](#)

ORF Nucleotide Sequence:

>RG234966 representing NM_001199388
 Red=Cloning site Blue=ORF Green=Tags(s)

TTTTGTAATACGACTCACTATAGGGCGGCCGGAATTCGTCGACTGGATCCGGTACCGAGGAGATCTGCC
 GCC**CGGATCGCC**

ATGACTACTGAAGTAGGCTCTGTGTCTGAAGTGAAGAAGGACTCTAGCCAGTTAGGAACAGATGCAACCA
 AGGAAAAACCTAAAGAAGTAGCAGAAAAATCAGCAGAATCAGTCTTCCGATCCAGAGGAGGAAAAAGTTCC
 CCAGCCACCTCCTGCAGCTGAAAGCCAAAGTAGTCTACGCCGCCAGAAGAGAGAGAAAGGAAACATCGGAG
 AGCAGGGGTATTTCTCGTTTCATACCGCCATGGCTTAAGAAGCAAAAGTCATATACCTTAGTAGTGGCCA
 AAGATGGAGGAGATAAAAAAGAGCCTACCCAAGCTGTTGTTGAAGAACAGGTCTTAGATAAAGAGGAACC
 CCTTCCAGAAGAACAGAGACAGGCTAAGGGTATGCTGAAGAAATGGCTCAGAAGAAACAAGAGATTA
 GTTGAAGTCAAGGAAGAAAAACCTCAGTGAGCAAGGAAGAAAAACCTCAGTGAGCAAAGTGGAGATGC
 AGCCTACTGAATTAGTAAGTAAAGAGAGAGAAGAGAAGGTAAGAAACACAGGAAGACAAATTAGAAGG
 AGGAGCAGCAAAAAGGGAGACCAAGGAAGTGCAGACCAATGAGCTGAAAGCAGAGAAGGCATCTCAAAAA
 GTCACCAAGAAGACCAAAACTGTCCAGTGTAAAGTGACCTCTTAGATGGCACCGAATACAGCTGTGACC
 TGGAGAAACATGCCAAGGGACAAGTGTATTGACAAAGTGTGTGAACACCTCAATCTCTTGGAGAAAGA
 CTACTTTGGACTTTTGTTCAGGAAAGCCTGAGCAGAAAAACTGGTTAGATCCTGCTAAAGAAATAAAG
 AGACAACCTGAGAAACCTTCCATGGCTATTCACCTTTAATGTGAAGTTTTATCCTCCTGATCCTTCTCAAT
 TGACTGAAGATATCACCAGATACTTCTGTGCCTTCAGCTCCGGCAGGACATTGCCTCTGGCCCGCTGCC
 CTGCTCTTTGTGACTCATGCTCTCCTGGGATCCTACACCCTGCAGGCTGAACCTGGTACTATGACCCA
 GAAGAACATGGCAGCATCGACCTCAGTGAATCCAGTTTGCCCTACTCAGACTAAGGAGCTGGAAGAGA
 AGGTGACAGACTGCACAAAACCCACAGGGCTTATCGCCAGCACAAGCTGATCCCAAGTCTTAGAAAA
 TGCAAAGAGGCTTCCATGTATGGTGTGACCTACATCATGCCAAGGACTCAGAAGGTGTGGACATCAAG
 CTGGGCGTGTGTGCTAATGGACTTCTATTACAAAGACAGACTGCGAATCAATCGTTTTGCTTGGCCGA
 AAATCTAAAAATTTCTATAAACCGAGTAACTTCTACATTAAGTCAAGCCGAGAGCTGGAACAGTT
 TGAGAGTACCATTGGATTCAAACGCCAAACCACCGGCGAGGAAAGACTATGGAAAGTGTGCGTGGAG
 CATCATACTTTCTACAGGCTTGTTCCTCAGAGCAGCCACCAAAAGCCAAGTTCTGACCTTGGGGTCCA
 AATTTTCGATAGTGGCCGACCCAAGCACAGACCCGCGCAGGCCAGCACCCTCATAGATAGGCCAGCACC
 ACCTTTGAGCGCACTTCTAGTAAACGGGTCTCCAGGAGTCTAGATGGAGCTCCGATTGGTGTATGGAC
 CAAAGTCTTATGAAGATTTTCTGGCGTGTGGGGAGATTTACGCTATGGACCTGGACTTGTGACGA
 TTGCCGTGTTACAAGATGGGGACGGCAGGAGGGAAGTGAAGGCCAACTAAAGCCCACATTTGACGCT
 CATTGAAGGAAAGAGTTCACATGAGACTCTGAATATAGTGGAGGAGAAGAGCGGGCAGAGGTTGGGAAA
 GACGAAAGAGTAATCACAGAAGAAATGAATGGTAAAGAGATATCACCTGGGAGTGGTCTGGGGAGATTC
 GTAAGGTGGAGCCTGTGACACAAAAAGACTCCACCTCCCTGTCTTCTGAGAGCAGCAGCAGCAGTGA
 GAGTGAGGAGGAAGACGTGGGAGAGTACCGTCCCACCACCGAGTGACCGAGGGCACCATCAGGGAGGAA
 CAGGAGTATGAAGAAGAGGTGGAGGAAGAACCCCGCCGCGCAGCCAAGCCACCAGTGGTAAAAACAGAGA
 TGGTAACAATTTCTGATGCCTCACAAGGACAGAAATCTCCACCAAGGAAGTCCCATTGTCCAAACTGA
 ACCAAAACCATCACATATGAGTCTCCACAGATTGATGGCGGGGCTGGTGGTATTTCGGGCACGTTACTG
 ACCGCACAAACCATCACATCTGAGTCCGTGTCAACAACGACAACACACATCACCAAGACTGTA
 GTGGAATTTCTGAAACAAGAATTGAGAAACGCATTGTGATCACAGGAGATGGAGATATTGATCATGACCA
 GGCCTGGCTCAGGCGATCAGGGAAGCCAGAGAGCAGCACCCTGACATGTCGGTCAAGAGTGGTGGTA
 CACAAAGAACAGAGTTGGCTGAGGAAGGGGAAGAT

ACCGTACGCGGCCGCTCGAG - GFP Tag - GTTTAA

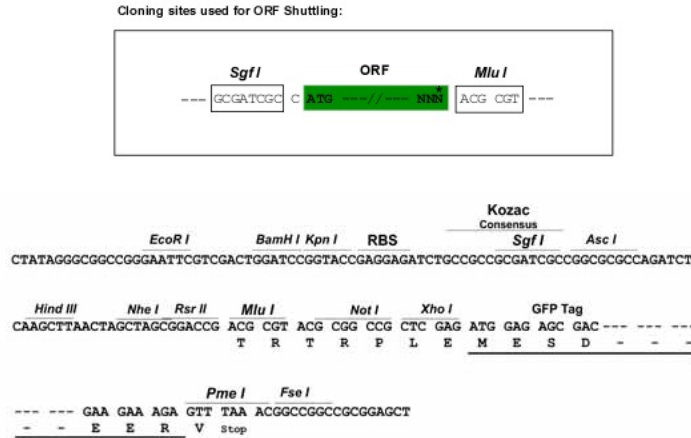
Protein Sequence: >RG234966 representing NM_001199388
Red=Cloning site Green=Tags(s)

MTTEVGSVSEVKKDSSQLGTDATKEKPKEVAENQQNQSSDPEEEKGSQPPPAESQSSLRQKREKETSE
SRGISRFIPPWLKKQSYTLVAKDGGDKKEPTQAVVEEQVLDKEEPLPEEQRAKGAEEAMAQKKQEIK
VEVKEEKPSVSKEEKPSVSKVEMQPTLVSKEREKVKETQEDKLEGGAAKRETKEVQTNELKAEKASQK
VTKKTKTVQCKVTLLDGTEYSCDLEKHAKGQVLFDKVCEHLNLEKDYFGLLFQESPEQKNWLDPAKEIK
RQLRNLPWLFTFNVKFYPPDPSQLTEDITRYFLCLQLRQDIASGRLPSCFVTHALLGSYTLQAEELGDYDP
EEHGSIDLSEFQFAPTQTKLEEKVAELHKTHRGLSPAQADSQFLENAKRLSMYGVDLHHAADSEGVDIK
LGVCANGLLIYKDRLRINRFAWPKILKISYKRSNFYIKVRPAELEQFESTIGFKLPNHRAAKRLWKVCVE
HHTFYRLVSPEQPPKAKFLTLGSKFRYSGRTQAQTRQASTLIDRPAPHFERTSSKRVSRSLDGAPIGVMD
QSLMKDFPGAAGEISAYGPLVSIHAVVQDGDGRREVRSPTKAPHLQLIEGKSSHETLNIVEEKKRAEVGK
DERVITEEMNGKEISPGSGPGEIRKVEPVTQKSTLSSESSSSSESEEEEDVGEYRPHHRVTEGTIREE
QEYEEEEVEEPRPAKPPVVKTEMVTISDASQRTISTKEVPIVQTETKITIYESPOIDGGAGGDSGTL
TAQTITSESVSTTTTTHITKTVKGGISETRIEKRIVITGDGDIDHDQALAQAIAREAQHPDMSVTRVVV
HKETELAEED

TRTRPLE - GFP Tag - V

Restriction Sites: Sgfl-Mlul

Cloning Scheme:



ACCN: NM_001199388

ORF Size: 2556 bp

OTI Disclaimer: The molecular sequence of this clone aligns with the gene accession number as a point of reference only. However, individual transcript sequences of the same gene can differ through naturally occurring variations (e.g. polymorphisms), each with its own valid existence. This clone is substantially in agreement with the reference, but a complete review of all prevailing variants is recommended prior to use. [More info](#)

OTI Annotation: This clone was engineered to express the complete ORF with an expression tag. Expression varies depending on the nature of the gene.

Components: The ORF clone is ion-exchange column purified and shipped in a 2D barcoded Matrix tube containing 10ug of transfection-ready, dried plasmid DNA (reconstitute with 100 ul of water).

Reconstitution Method:

1. Centrifuge at 5,000xg for 5min.
2. Carefully open the tube and add 100ul of sterile water to dissolve the DNA.
3. Close the tube and incubate for 10 minutes at room temperature.
4. Briefly vortex the tube and then do a quick spin (less than 5000xg) to concentrate the liquid at the bottom.
5. Store the suspended plasmid at -20°C. The DNA is stable for at least one year from date of shipping when stored at -20°C.

RefSeq: [NM_001199388.2](#), [NP_001186317.1](#)

RefSeq Size: 4023 bp

RefSeq ORF: 2559 bp

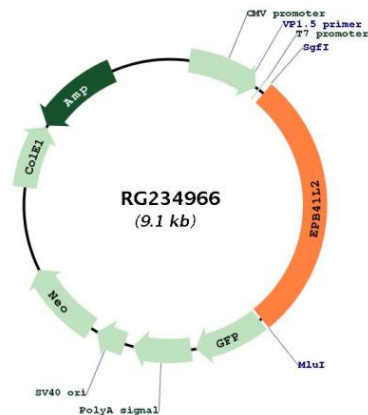
Locus ID: 2037

Cytogenetics: 6q23.1-q23.2

Protein Pathways: Tight junction

Gene Summary: Required for dynein-dynactin complex and NUMA1 recruitment at the mitotic cell cortex during anaphase (PubMed:23870127).[UniProtKB/Swiss-Prot Function]

Product images:



Circular map for RG234966