

## Product datasheet for **RG234963**

### HIF-1 alpha (HIF1A) (NM\_001243084) Human Tagged ORF Clone

#### Product data:

Product Type:	Expression Plasmids
Product Name:	HIF-1 alpha (HIF1A) (NM_001243084) Human Tagged ORF Clone
Tag:	TurboGFP
Symbol:	HIF-1 alpha
Synonyms:	bHLHe78; HIF-1-alpha; HIF-1A; HIF-1alpha; HIF1; HIF1-ALPHA; MOP1; PASD8
Mammalian Cell Selection:	Neomycin
Vector:	pCMV6-AC-GFP (PS100010)
E. coli Selection:	Ampicillin (100 ug/mL)



[View online »](#)

**ORF Nucleotide Sequence:**

>RG234963 representing NM\_001243084  
 Red=Cloning site Blue=ORF Green=Tags(s)

TTTTGTAATACGACTCACTATAGGGCGGCCGGAATTCGTGACTGGATCCGGTACCGAGGAGATCTGCC  
 GCC**CGGATCGCC**

ATGAGCTCCCAATGTCGGAGTTTGGAAAACAAATTTGTCTTTTTAAAAGAAGGTCTAGGAACTCAAAC  
 CTGAAGAATTGGAAGAAATCAGAATAGAAAATGGTAGGATAAGTTCTGAACGTCGAAAAGAAAAGTCTCG  
 AGATGCAGCCAGATCTCGGCGAAGTAAAGAATCTGAAGTTTTTATGAGCTTGCTCATCAGTTGCCACTT  
 CCACATAATGTGAGTTCGCATCTTGATAAGGCCTCTGTGATGAGGCTTACCATCAGCTATTTGCGTGTGA  
 GAAAACCTCTGGATGCTGGTATTGGATATTGAAGATGACATGAAAGCACAGATGAATTGCTTTTTATTT  
 GAAAGCCTTGGATGGTTTTGTTATGTTTCTCACAGATGATGGTGACATGATTTACATTTCTGATAATGTG  
 AACAAATACATGGGATTAACCTAGTTTGAACCTACTGGACACAGTGTGTTGATTTACTCATCCATGTG  
 ACCATGAGGAAAATGAGAGAAATGCTTACACACAGAAATGGCCTTGTGAAAAGGGTAAAGAACAAAACAC  
 ACAGCGAAGCTTTTTCTCAGAATGAAGTGTACCTAAGTACCGAGGAAGAAGTATGAACATAAAGTCT  
 GCAACATGGAAGTATTGCACTGCACAGGCCACATTCAGCTATATGATACCAACAGTAACCAACCTCAGT  
 GTGGGTATAAGAAACCACCTATGACCTGCTTGGTGTGATTTGTGAACCCATTCTCACCCATCAAATAT  
 TGAAATTCCTTTAGATAGCAAGACTTTCCTCAGTCGCACACAGCCTGGATATGAAATTTCTTATTGTGAT  
 GAAAGAATTACCGAATTGATGGGATATGAGCCAGAAGAACTTTTAGGCCGCTCAATTTATGAATATTATC  
 ATGCTTTGGACTCTGATCATCTGACCAAACTCATCATGATATGTTTACTAAAGGACAAGTACCACAGG  
 ACAGTACAGGATGCTTGCCAAAAGAGGTGGATATGTCTGGTTGAAACTCAAGCAACTGCATATATAAC  
 ACCAAGAATCTCAACCACAGTGCATTGTATGTGTAATTACGTTGTGAGTGGTATTATTCAGCAGGACT  
 TGATTTCTCCCTTCAACAAACAGAATGTGCTCTTAAACCGGTTGAATCTTCAGATATGAAAATGACTCA  
 GCTATTACCAAAGTTGAATCAGAAGATACAAGTACGCTCTTTGACAACTTAAGAAGGAACCTGATGCT  
 TTAACCTTGTGCCCCAGCCGCTGGAGACACAATCATATCTTTAGATTTTGGCAGCAACGACACAGAAA  
 CTGATGACCAGCAACTTGAGGAAGTACCATTATATAATGATGTAATGCTCCCTCACCCAACGAAAAATT  
 ACAGAATATAAATTTGGCAATGTCTCCATTACCCACCGCTGAAACGCCAAAGCCACTTCGAAGTAGTGCT  
 GACCCTGCACTCAATCAAGAAGTGCATTAATAATAGAACCAATCCAGAGTCACTGGAACCTTCTTTTA  
 CCATGCCCCAGATTCAGGATCAGACACCTAGTCTTCCGATGGAAGCACTAGACAAAGTTCACCTGAGCC  
 TAATAGTCCAGTGAATATTGTTTTATGTGGATAGTGATATGGTCAATGAATTCAGTTGGAATTGGTA  
 GAAAACTTTTTGCTGAAGACACAGAAGCAAAGAACCCATTTTCTACTCAGGACACAGATTTAGACTTGG  
 AGATGTTAGTCCCTATATCCCAATGGATGATGACTTCCAGTTACGTTCCCTTCGATCAGTTGTACCATT  
 AGAAAGCAGTTCCGCAAGCCCTGAAAGCGCAAGTCCCTCAAAGCACAGTTACAGTATTCCAGCAGACTCAA  
 ATACAAGAACCTACTGCTAATGCCACCACTACCACTGCCACCACTGATGAATTAACCAAGTGCACAAAAG  
 ACCGATGGAAGACATTAATAATTTGATTGCATCTCCATCTCCTACCCACATACATAAAGAACTACTAG  
 TGCCACATCATCACCATATAGAGATACTCAAAGTCGGACAGCCTCACCAACAGAGCAGGAAAAGGAGTC  
 ATAGAACAGACAGAAAAATCTCATCCAAGAAGCCCTAACGTGTTATCTGTGCTTTGAGTCAAAGAACTA  
 CAGTTCCTGAGGAAGAACTAAATCCAAGATACTAGCTTTGCAGAATGCTCAGAGAAAGCAGAAAAATGGA  
 ACATGATGGTTCACTTTTTCAAGCAGTAGGAATTGGAACATTATTACAGCAGCCAGACGATCATGCAGCT  
 ACTACATCACTTTCTTGAAACGTGTAAGGATGCAAACTAGTGAACAGAATGGAATGGAGCAAAGA  
 CAATTATTTAATACCCTCTGATTTAGCATGTAGACTGCTGGGGCAATCAATGGATGAAAGTGGATTACC  
 ACAGCTGACCAGTTATGATTGTGAAGTTAATGCTCCTATACAAGGCAGCAGAAACCTACTGCAGGGTGA  
 GAATTACTCAGAGCTTTGGATCAAGTTAAC

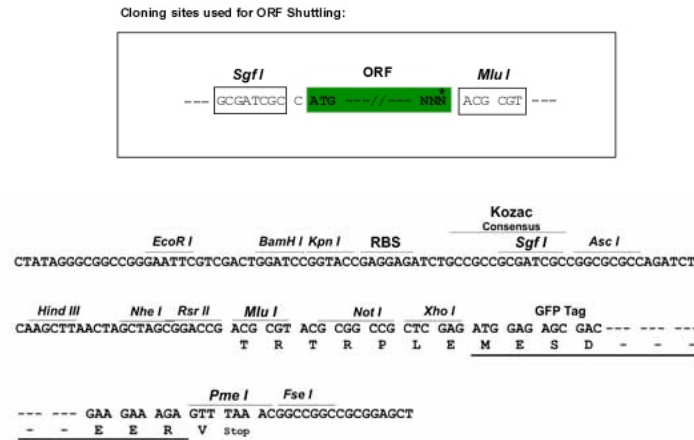
**ACGCGT**ACGCGGCCGCTCGAG – GFP Tag – GTTTAA

**Protein Sequence:** >RG234963 representing NM\_001243084  
 Red=Cloning site Green=Tags(s)

```
MSSQCRSLENKFVFLKEGLGNSKPEELEEIRIENGRISERRKEKSRDAARSRRSKESEVFYELAHQLPL
PHNVSSHLDKASVMRLTISYLRVRKLLDAGDLIEDDMKAQMNC FYLKALDGFVMVLTDDGDMIIYISDNV
NKYMGLTQFELTGHSVDFTHPCDHEEMREMLTHRNLVKKGKEQNTQRSFFLRMKCTLTSRGRTMNIKS
ATWKVLHCTGHIHVYDTNSNPQCQGYKKPPMTCLVLICEPIPHPSNIEIPLDSKTFLSRHSLDMKFSYCD
ERITELMGYEPEELLGRSIYEYHALDSDHLTKTHDMFTKGQVTTGQYRMLAKRGGYVWVETQATVIYN
TKNSQPQCIVCVNYVSGIIQHDLIFSLQQTECVLKPVESSDMKMTQLFTKVESED TSSLFDKLLKKEPDA
LTLLAPAAGDTIISLDFGSNDTETDDQQLEEVPLYNDVMLPSPNEKLQINLAMSP LPTAETPKPLRSSA
DPALNQEVALKLEPNPESLELSFTMPQIQDQTPSPSDGSTRQSSPEPNPSEYCFYVDSDMVNEFKLELV
EKLFAEDTEAKNPFSTQD TDLLEMLAPYIPMDDDFQLRSFDQLSPLESSASPESASPQSTVTVFQQTQ
IQEPTANATTTTATTD ELKTVTKDRMEDIKILIASPSPTHHKETT SATSSPYRDTQSRTASPNRAGKGV
IEQTEKSHPRSPNVLSVALSQRTTVPEEELNPKILALQNAQRKRKMEHDGSLFQAVGIGITLLQQPDDHAA
TTSLSWKRVKGCKSSEQNGMEQKTIILIPSDLACRLLGQSMDESGLPQLTSYDCEVNAPIQGSRNLLQGE
ELLRALDQVN
```

TRTRPLE - GFP Tag - V

**Restriction Sites:** Sgfl-MluI

**Cloning Scheme:**


**ACCN:** NM\_001243084

**ORF Size:** 2550 bp

**OTI Disclaimer:** The molecular sequence of this clone aligns with the gene accession number as a point of reference only. However, individual transcript sequences of the same gene can differ through naturally occurring variations (e.g. polymorphisms), each with its own valid existence. This clone is substantially in agreement with the reference, but a complete review of all prevailing variants is recommended prior to use. [More info](#)

**OTI Annotation:** This clone was engineered to express the complete ORF with an expression tag. Expression varies depending on the nature of the gene.

**Components:** The ORF clone is ion-exchange column purified and shipped in a 2D barcoded Matrix tube containing 10ug of transfection-ready, dried plasmid DNA (reconstitute with 100 ul of water).

**Reconstitution Method:**

1. Centrifuge at 5,000xg for 5min.
2. Carefully open the tube and add 100ul of sterile water to dissolve the DNA.
3. Close the tube and incubate for 10 minutes at room temperature.
4. Briefly vortex the tube and then do a quick spin (less than 5000xg) to concentrate the liquid at the bottom.
5. Store the suspended plasmid at -20°C. The DNA is stable for at least one year from date of shipping when stored at -20°C.

**RefSeq:** [NM\\_001243084.1](#), [NP\\_001230013.1](#)

**RefSeq Size:** 3979 bp

**RefSeq ORF:** 2553 bp

**Locus ID:** 3091

**UniProt ID:** [Q16665](#)

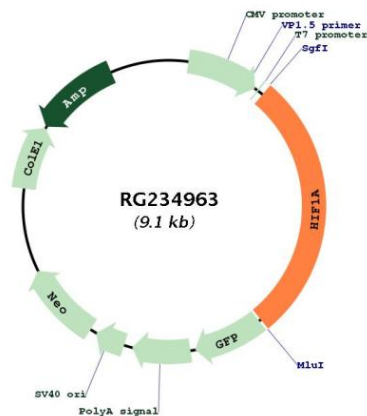
**Cytogenetics:** 14q23.2

**Protein Families:** Transcription Factors

**Protein Pathways:** mTOR signaling pathway, Pathways in cancer, Renal cell carcinoma

**Gene Summary:** This gene encodes the alpha subunit of transcription factor hypoxia-inducible factor-1 (HIF-1), which is a heterodimer composed of an alpha and a beta subunit. HIF-1 functions as a master regulator of cellular and systemic homeostatic response to hypoxia by activating transcription of many genes, including those involved in energy metabolism, angiogenesis, apoptosis, and other genes whose protein products increase oxygen delivery or facilitate metabolic adaptation to hypoxia. HIF-1 thus plays an essential role in embryonic vascularization, tumor angiogenesis and pathophysiology of ischemic disease. Alternatively spliced transcript variants encoding different isoforms have been identified for this gene. [provided by RefSeq, Jul 2011]

### Product images:



Circular map for RG234963