

## Product datasheet for **RG234937**

### **BCAR3 (NM\_001261409) Human Tagged ORF Clone**

#### **Product data:**

Product Type:	Expression Plasmids
Product Name:	BCAR3 (NM_001261409) Human Tagged ORF Clone
Tag:	TurboGFP
Symbol:	BCAR3
Synonyms:	AND-34; MIG7; NSP2; SH2D3B
Mammalian Cell Selection:	Neomycin
Vector:	pCMV6-AC-GFP (PS100010)
E. coli Selection:	Ampicillin (100 ug/mL)



[View online »](#)

**ORF Nucleotide Sequence:**

>RG234937 representing NM\_001261409  
 Red=Cloning site Blue=ORF Green=Tags(s)

TTTTGTAATACGACTCACTATAGGGCGGCCGGAATTCGTCGACTGGATCCGGTACCGAGGAGATCTGCC  
 GCC**GCGATCGCC**

ATGGCTGCAGAAAAATTTGCAAGCCTTCCAGAAACATGCCGGTGAATCACCAGTTCCTCCCTGTCAT  
 CCATGGACCTTCTGAGCAGCAGGTCCTCCTCGCTGAGCATCGCCAGATGCCTATCAAGATGTGTCTAT  
 ACATGGCACCTTCCACGGAAGAAAAAGGTCTCCTCCATAAGGTCTGTGATGACTTCAGTCACATG  
 GGCACCTCCCCACTCCAAATCCCACGGCAGAACTCGCTGTGACCCAGGATGGCATCCAGGAGAGCC  
 CATGGCAGGACCGGCACGGCGAAACCTTACCTTCAGGGATCCACATCTTCTGGACCCAACGTGGAATA  
 TGTGAAGTTCTCCAAGGAGAGGCACATCATGGACAGGACCCCGAAGAACTGAAGAAGGAGCTGGAGGAG  
 GAGCTGCTCTGAGCAGCGAGGACCTGCGCAGCCATGCCTGGTACCACGGCCGCATCCCCGACAGGTGT  
 CTGAAAACCTTGTGACGCGAGATGGTGACTTCTAGTTCGTGACTCTCTGTCCAGCCCTGGGAACCTTGT  
 CCTGACCTGTGAGTGAAGAACCTCGCTCAGCACTTCAAATCAACCGGACAGTTCTGCGACTCAGCGAG  
 GCCTACAGCCCGCTGCAGTACCAGTTCGAGATGGAGAGCTTCGACTCCATCCCCGGCCTGGTGGCGTGT  
 ACGTGGGCAACCGCCGGCCCATCTCCAGCAGAGTGGCGCCATCATCTTCCAGCCATCAACAGGACGGT  
 GCCTCTGCGGTGCCTGGAGGAGCATTATGGCACCTCCCCAGGCCAGGCCCGGGAGGGCAGCCTACCAAG  
 GGAAGGCCGGATGTGGCCAAGAGGCTGAGCCTCACCATGGGTGGCGTCCAGGCCGAGAGCAGAATTTGC  
 CCAGGGGAAACCTCCTCAGAAACAAAGAAAAGAGTGGTAGCCAGCCCGCTGCCTGGATCACATGCAGGA  
 CAGAAGAGCCTTGTCCCTCAAAGCCCACAGTCAGAGAGCTACCTGCCGATTGGCTGCAAGCTGCCACCT  
 CAGTCTCGGGTGTGGACACAAGCCCTGCCAACTCACCTGTGTTGAGGACGGGAAGCGAGCCTGCC  
 TGAGCCACAGTGGTTTCGGAGGTCTCCTCAGACGCCAGGGCTGGGGAGGCGCTGAGGGGATCAGACAG  
 TCAACTGTGCCCTAAGCCCGCCTAAGCCCTGCAAGGTGCCGTTCTCAAGGTTCCCTCGTCTCCCTCT  
 GCCTGGCTCAACTCAGAGGCCAACTACTGTGAAGTGAACCCAGCGTTTGGCACAGGCTGCGGCAGGGGAG  
 CAAAGCTACCCTCATGTGCCAGGGAAGCCACACAGAAGTGTACAGCCAAGCAGAATGAGGCGCCAGG  
 TCCCCGAACTCTGGCGTCAACTACTTGATCCTTGATGATGATGACAGGGAAAGACCTTGGGAACCTGCG  
 GCAGCTCAGATGGAGAAGGGCAGTGGGACAAGGGCGAGTTTGTGACGCCCTCCTGGAGACTGTCTCCT  
 CCTTCAGGCCAACGAGTTTGTGATCAAAGTTCTTCCCCCTGAGAATAAGCCCTGGAAACAGCAATGTT  
 GAAACGTGAAAAGAAGTGTCCACCAACAACGACCCCAAGGTATCGCCAGCACGTAAGTACTGAGCATGGAC  
 TGCAGGGTTGCTAGGATACTTGGAGTCTCTGAAGAGATGAGGAGGAACATGGGGGTGAGCTCAGGCTGG  
 AACTCATTACCTTGCCTACGGACACCAGCTGCGCCTGGACATAATTGAAAGACACAACAATGGCCAT  
 CGGCATTGCAGTGGACATTCTGGGATGCACGGGCACTTTGGAGGACCGAGCGGCCACTCTGAGTAAGATC  
 ATCCAGGTGGCGGTGGAAGTGAAGGATCCATGGGGGACCTTATTCCTTCTCAGCTCTCATGAAAGCCC  
 TGGAAATGCCACAGATCAAGGTTAGAAAAGACGTGGACTGCTCTGCGGCACCAGTACACCCAACTGC  
 CATTCTATGAGAAACAGCTGAAGCCCTTCAAGAACTCCTGCATGAAGGCAGAGATCCACATGTGTT  
 CCCCCAAACAATGTATCAGTCCCACTGCTGATGCCGCTTGTGACGTTAATGGAGCGCCAGGCTGTGACTT  
 TTGAAGGAACCGACATGTGGGAAAAAACGACCCAGAGCTGTGAAATCATGCTGAACCATTTGGCAACAGC  
 GCGATTATGGCCGAGGCTGCAGACAGCTACCGGATGAATGCTGAGAGGATCCTGGCAGGTTTTCAACCA  
 GATGAAGAAATGAATGAAATCTGCAAGACTGAATTTCAAATGCGATTGCTATGGGGCAGCAAAGGTGCAC  
 AAGTCAATCAGACAGAGAGATATGAGAAATTAACCCAGATTTAACTGCCCTCTCGGTAATTTGAAC  
 TCCTCCTGTAAGCAGGCAGAGCTT

**ACGGTACGCGGCCGCTCGAG** - GFP Tag - GTTTAA

Protein Sequence: >RG234937 representing NM\_001261409

Red=Cloning site Green=Tags(s)

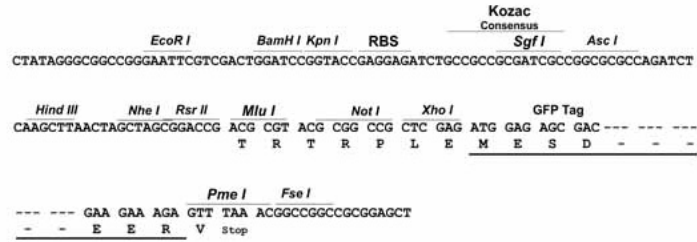
MAAGKFASLPRNMPVNHQFPLASSMDLLSSRSPLAEHRPDAYQDVSIHGTLPRKKKGPPPIRSCDDFSHM  
GTLPHSKSPRQNSPVTQDGIQESPWQDRHGETTFTRDPHLLDPTVEYVKFSKERHIMDRTPKLLKKELEE  
ELLLSSEDLRSHAWYHGRIPRQVSENLVQRDGFVLRDSLSSPGNFVLTQWKNLAQHFKINRTVLRLE  
AYSRVQYQFEMESFDSIPGLVRCYVGNRRPISQQSGAIIIFQPINRTVPLRCL EEHYGTSPGQAREGSLTK  
GRPDVAKRLSLTMGGVQAREQNLPRGNLLRNKEKSGSQPACLDHMQDRRALSLKAHQSESYLPIGCKLPP  
QSSGVDTSPCPNSPVFRTGSEPALSPAVVRRVSSDARAGEALRGSDSQLCPKPPPKPKVPFLKVPSSPS  
AWLNSEANYCELNPAFATGCGRGAKLPSCAQGSHTELLTAKQNEAPGPRNSGVNYLILDDDDRRERPWEPA  
AAQMEKGQWDKGEFVTPLETVSSFRPNEFESKFLPPENKPLETAMLKRAKELFTNNDPKVIAQHVL SMD  
CRVARILGVSEEMRRNMGVSSGLELITLPHGQLRLDI IERHNTMAIGIAVDILGCTGTLEDRAATLSKI  
IQVAVELKDSMGDLYSFSALMKALEMPQITRLEKTWTALRHQYTQTAILYEKQLKPFKLLHEGRESTCV  
PPNNVSVPLLMPLVTLMERQAVTFEGTDMWEKNDQSCEIMLNHLATARFMAEAADS YRMNAERILAGFQP  
DEEMNEICKTEFQMRLWGSKGAQVNQTERYEKFNQILTALSRKLEPPPVKQAE

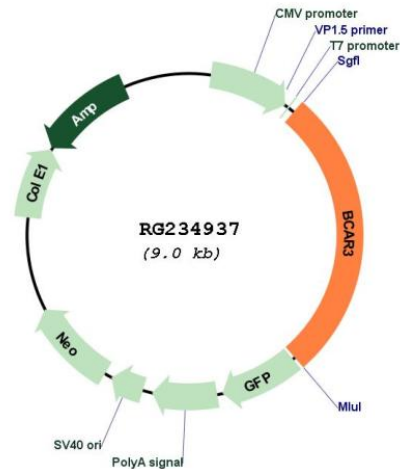
TRTRPLE - GFP Tag - V

Restriction Sites: Sgfl-Mlul

Cloning Scheme:

Cloning sites used for ORF Shutting:



**Plasmid Map:**


**ACCN:** NM\_001261409

**ORF Size:** 2475 bp

**OTI Disclaimer:** The molecular sequence of this clone aligns with the gene accession number as a point of reference only. However, individual transcript sequences of the same gene can differ through naturally occurring variations (e.g. polymorphisms), each with its own valid existence. This clone is substantially in agreement with the reference, but a complete review of all prevailing variants is recommended prior to use. [More info](#)

**OTI Annotation:** This clone was engineered to express the complete ORF with an expression tag. Expression varies depending on the nature of the gene.

**Components:** The ORF clone is ion-exchange column purified and shipped in a 2D barcoded Matrix tube containing 10ug of transfection-ready, dried plasmid DNA (reconstitute with 100 ul of water).

**Reconstitution Method:**

1. Centrifuge at 5,000xg for 5min.
2. Carefully open the tube and add 100ul of sterile water to dissolve the DNA.
3. Close the tube and incubate for 10 minutes at room temperature.
4. Briefly vortex the tube and then do a quick spin (less than 5000xg) to concentrate the liquid at the bottom.
5. Store the suspended plasmid at -20°C. The DNA is stable for at least one year from date of shipping when stored at -20°C.

**RefSeq:** [NM\\_001261409.1](#), [NP\\_001248338.1](#)

**RefSeq Size:** 3226 bp

**RefSeq ORF:** 2478 bp

**Locus ID:** 8412

**UniProt ID:** [O75815](#)

**Cytogenetics:** 1p22.1

**Protein Families:** Druggable Genome

**Gene Summary:** Breast tumors are initially dependent on estrogens for growth and progression and can be inhibited by anti-estrogens such as tamoxifen. However, breast cancers progress to become anti-estrogen resistant. Breast cancer anti-estrogen resistance gene 3 was identified in the search for genes involved in the development of estrogen resistance. The gene encodes a component of intracellular signal transduction that causes estrogen-independent proliferation in human breast cancer cells. The protein contains a putative src homology 2 (SH2) domain, a hall mark of cellular tyrosine kinase signaling molecules, and is partly homologous to the cell division cycle protein CDC48. Multiple transcript variants encoding different isoforms have been found for this gene. [provided by RefSeq, May 2012]