

Product datasheet for **RG234922**

ARPP21 (NM_001267619) Human Tagged ORF Clone

Product data:

Product Type:	Expression Plasmids
Product Name:	ARPP21 (NM_001267619) Human Tagged ORF Clone
Tag:	TurboGFP
Symbol:	ARPP21
Synonyms:	ARPP-21; R3HDM3; RCS; TARPP
Mammalian Cell Selection:	Neomycin
Vector:	pCMV6-AC-GFP (PS100010)
E. coli Selection:	Ampicillin (100 ug/mL)



[View online »](#)

ORF Nucleotide Sequence:

>RG234922 representing NM_001267619
 Red=Cloning site Blue=ORF Green=Tags(s)

TTTTGTAATACGACTCACTATAGGGCGGCCGGAATTCGTCGACTGGATCCGGTACCGAGGAGATCTGCC
 GCC**CGGATCGCC**

ATGTCGTAGCAAGGAGACCTGAATCAGGCAATAGCAGAGGAAGGAGGACTGAGCAGGAGACGGCCACTC
 CAGAGAACGGCATTGTTAAATCAGAAAGTCTGGATGAAGAGGAGAACTGGAAGTGCAGAGGCGGCTGGA
 GGCTCAGAATCAAGAAAGAAATAATCCAGTCAAGGAGCAGGAAAAGGTAAGTAACTGACTCGCAGCCTTGCT
 GTCTGTGAGGAATCTTCTGCCAGACCAGGAGGTGAAAGTCTTCAGGATCAGGAATCAATTCATTTACAGC
 TTTCCAGTTTTTCCAGCCTGCAAGAGGAGGATAAATCTAGGAAAGATGACTCTGAAAGAGAAAAAGAAAA
 GGATAAAAACAAAGATAAAAACCTCTGAAAAACCAAGATCAGAATGTTATCAAAAGATTGCACCCAAGAA
 TACACGGATTCTACAGGCATAGACTTACACGAGTTTCTGATTAACACATTAAGAATAATTCAGGGACA
 GGATGATACTTTTAAAAATGGAGCAGGAAATTATTGATTTATTGCTGACAACAATAATCATTATAAAAA
 GTTCCCTCAGATGTCATCGTATCAGAGGATGCTTGCCATCGAGTGGCAGCTTATTTTGGATTGGATCAC
 AATGTGGATCAAACAGGAAAATCTGTTATCATCAACAAGACCAGCAGCACCAGAATACCAGAGCAAAGGT
 TTTGTGAACATTTAAAAGATGAAAAAGGTGAAGAATCCCAGAAGCGGTTTATCTTGAAGCGAGATAACTC
 TAGTATTGATAAAGAAGACAATCAGTCAGTTTGTCTCCAGGAAAGCCTTTTTGTGGAAAACAGTAGGCTC
 TTGGAAGACAGTAACATATGCAATGAGACCTATAAGAAAAGACAGCTCTTTCGGGGCAACAGAGATGGCT
 CAGGGAGAACATCTGGGAGTGCAGACAGCAGCTCAGAAAATGAACTCAAGTGGTCTGACCACCAAAGGGC
 CTGGAGCAGCACAGACTCCGACAGTCCAACCGCAATCTAAAGCCCGCCATGACCAAGACGGCGAGTTTT
 GGGGGCATCACGGTCTGACCAGGGGTGACAGCACTTCCAGTACTAGGAGTACCGGAAGCTGTCCAAG
 CAGGTTCCGAGTCTTCCAGCAGTGCAGGCTCCTCAGGATCGCTGTCCCGCACCCATCCACCTCTCCAGAG
 CACACCCCTAGTCTCAGGTGTGGCAGCTGGCTCTCCAGGCTGTGTGCCTTATCCAGAGAATGGAATAGGG
 GGCCAGGTTGCTCCAGCAGCACCAGCTACATCCTCCTTCCACTTGAAGCTGCAACAGGCATCCCGCCTG
 GAAGCATCCTTCTTAATCCACACACAGGCCAGCCCTTTGTGAATCCCGATGGAACCTCTGCAATATAACA
 CCCACCCACCAAGTCAAGCAGCCCTGCGAAGCGCCATGGTGGGGCAGTCCCAACAGCAGCCACCACAGCAG
 CAGCCCTCCCGCAGCCCAACAGCAGGTCAGCCACCGCAGCCACAGATGGCAGGCCCTCTGGTCACTC
 AGTCTGTCCAGGGGCTGCAGGCTTCTCCAGTCAAGTCAATATCCAGCAGTCTCTTTCTCCCCAGCA
 CCTCCTACCTGTGTCTCCAACGCAGCACTTTCCCATGAGAGATGATGTGGCAACACAGTTTGGCCAGATG
 ACCCTGAGCCGGCAGTCTCGGGGAGACTCCTGAACCCCATCAGGTCCTGTCTACCCATCCTCCCTTA
 TGCCACAGCCGGCCAGCAGCCAGCTATGTAATCGCCTTACAGGCCAGCAGCTTCTACAGGAGGATT
 CTCAGGCTCTGGCCCTCCCATCTCCAGCAGGTCCTCCAGCCCTCCTCACCACAGGGATTTGTGCAA
 CAGCCTCCGCCTGCACAGATGCCTGTATATTATACCCATCTGGTCAGTACCCTACCTCAACCACGCAAC
 AGTACCGGCCATGGCCCGGTTTCAGTACAACGCTCAGAGGAGTCAACAGATGCCACAGGCAGCACAGCA
 AGCAGGTTACCAGCCAGTCTTGTCTGGTCAACAGGATTCAGAGGCTAATAGGAGTGCAGCAGCCACCT
 CAGAGTCAGAACGTGATAAATAACCAACAAGGAACTCCGGTGCAAAGCGTGATGGTTTCTACCCAACA
 TGTCTTCTATCAGGTGCCAATGACCCAGGTTCTCAAGGACTGCCCCAGCAGTCATACCAACAGCCAAT
 CATGTACCTAACAGGCAGGTCAAGGGTCACTCCAGCCACTGGAATGCCTGTTTACTGTAATGTCACA
 CCGCCACCCCTCAGAACAACCTTAGGCTGATTGGCCCACTGCCCTCCAGCACTGTCCAGTGTATGT
 CAGCTAGTCTCAGAACAACCTGTGCAAGTATGAGCAATGCTGGTTGGCAGGTCAAATTC

ACCGTACGCGGCCGCTCGAG – GFP Tag – GTTTAA

Protein Sequence:

>RG234922 representing NM_001267619
 Red=Cloning site Green=Tags(s)

```
MSEQGDLNQAIAEEGGTEQETATPENGIVKSESLDEEEKLELQRRLEAQNQERRKSKSGAGKGLTRSLA
VCEESSARPGGESLQDQESIHLQLSSFSSLQEEDKSRKDDSEREKEKDKNKDKTSEKPKIRMLSKDCSQE
YTDSTGIDLHEFLINTLKNNSRDRMILLKMEQEIIDFIADNNHYKKFPQMSSYQRMLVHRVAAYFGLDH
NVDQTGKSVIINKTSSTRIPEQRFCEHLKDEKGEESQKRFILKRDNSSIDKEDNQSVCSQESL FVENSRL
LEDSNICNETYKKRQLFRGNRDGSGRTSGSRQSSSENELKWSDHQRAWSTDS DSSNRNLKPAMTKTASF
GGITVL TRGDSTSSTRSTGKLSKAGSESSSAGSSGSLSRTHPPLQSTPLVSGVAAGSPGCVYPENGIG
GQVAPSSTSYILLPLEAATGIPPGSILLNPHTGQPFVNPDPGTPAIYNPPTSQQPLRSAMVGQSQQPPQQ
QPSPPQQQVQPPQPMAGPLVTSVQGLQASSQSVQYPAVSFPPQHLLPVSPQHFPMRDDVATQFGQM
TL SRQSSGETPEPPSGPVYPSLMPQPAQQPSYVIASSTGQQLPTGGFSGSGPPI SQVLQPPPSPQGFVQ
QPPPAQMPVYYYYPSGQYPTSTTQQYRMAPVQYNAQRSQQMPQAAQQAGYQPVLSGQQGFQGLIGVQPP
QSQNVINNQGTVPQVSMVSYPTMSSYQVPMTQGSQGLPQQSYQQPIMLPNQAGQGS L PATGMPVVCNVT
PPTPQNNLRLIGPHCPSSSTVPVMSASCRTNCASMSNAGWQVKF
```

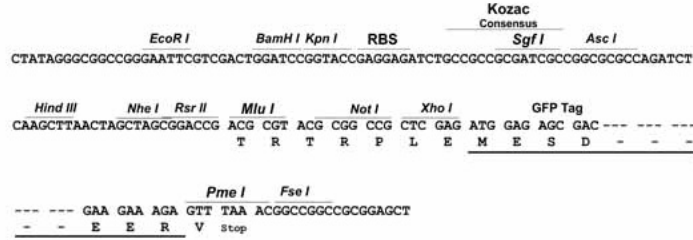
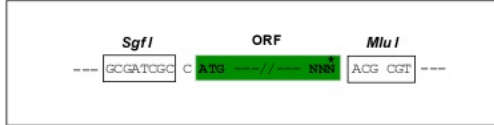
TRTRPLE - GFP Tag - V

Restriction Sites:

Sgfl-MluI

Cloning Scheme:

Cloning sites used for ORF Shutting:

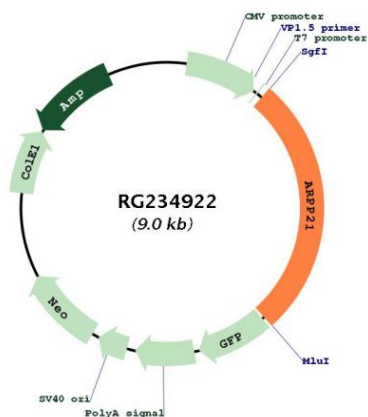


ACCN: NM_001267619

ORF Size: 2439 bp

OTI Disclaimer:	<p>Due to the inherent nature of this plasmid, standard methods to replicate additional amounts of DNA in E. coli are highly likely to result in mutations and/or rearrangements. Therefore, OriGene does not guarantee the capability to replicate this plasmid DNA. Additional amounts of DNA can be purchased from OriGene with batch-specific, full-sequence verification at a reduced cost. Please contact our customer care team at custsupport@origene.com or by calling 301.340.3188 option 3 for pricing and delivery.</p> <p>The molecular sequence of this clone aligns with the gene accession number as a point of reference only. However, individual transcript sequences of the same gene can differ through naturally occurring variations (e.g. polymorphisms), each with its own valid existence. This clone is substantially in agreement with the reference, but a complete review of all prevailing variants is recommended prior to use. More info</p>
OTI Annotation:	<p>This clone was engineered to express the complete ORF with an expression tag. Expression varies depending on the nature of the gene.</p>
Components:	<p>The ORF clone is ion-exchange column purified and shipped in a 2D barcoded Matrix tube containing 10ug of transfection-ready, dried plasmid DNA (reconstitute with 100 ul of water).</p>
Reconstitution Method:	<ol style="list-style-type: none">1. Centrifuge at 5,000xg for 5min.2. Carefully open the tube and add 100ul of sterile water to dissolve the DNA.3. Close the tube and incubate for 10 minutes at room temperature.4. Briefly vortex the tube and then do a quick spin (less than 5000xg) to concentrate the liquid at the bottom.5. Store the suspended plasmid at -20°C. The DNA is stable for at least one year from date of shipping when stored at -20°C.
RefSeq:	<p>NM_001267619.1, NP_001254548.1</p>
RefSeq Size:	<p>3209 bp</p>
RefSeq ORF:	<p>2442 bp</p>
Locus ID:	<p>10777</p>
UniProt ID:	<p>Q9UBL0</p>
Cytogenetics:	<p>3p22.3</p>
Gene Summary:	<p>This gene encodes a cAMP-regulated phosphoprotein. The encoded protein is enriched in the caudate nucleus and cerebellar cortex. A similar protein in mouse may be involved in regulating the effects of dopamine in the basal ganglia. Alternate splicing results in multiple transcript variants. [provided by RefSeq, Jun 2012]</p>

Product images:



Circular map for RG234922