

## Product datasheet for **RG234905**

### ZNF43 (NM\_001256650) Human Tagged ORF Clone

#### Product data:

|                           |   |
|---------------------------|---|
| Product Type:             | Expression Plasmids                         |
| Product Name:             | ZNF43 (NM_001256650) Human Tagged ORF Clone |
| Tag:                      | TurboGFP                                    |
| Symbol:                   | ZNF43                                       |
| Synonyms:                 | HTF6; KOX27; ZNF39L1                        |
| Mammalian Cell Selection: | Neomycin                                    |
| Vector:                   | pCMV6-AC-GFP (PS100010)                     |
| E. coli Selection:        | Ampicillin (100 ug/mL)                      |



[View online »](#)

**ORF Nucleotide Sequence:**

>RG234905 representing NM\_001256650  
 Red=Cloning site Blue=ORF Green=Tags(s)

TTTTGTAATACGACTCACTATAGGGCGGCCGGAATTCGTCGACTGGATCCGGTACCGAGGAGATCTGCC  
 GCC**CGCATCGCC**

ATGGATGTGGCCATAGAATTCTGTCTGGAGGAGTGGCAATGCCTGGACATTGCACAGCAGAAATTTATATA  
 GGAATGTGATGTTAGAGAACTACAGAACTGGTCTTCTGGGTATTGCTGTCTTAAGCCAGACCTGAT  
 CACCTGTCTGGAGCAAGAAAAAGAGCCTTGGGAGCCTATGAGGAGACATGAAATGGTAGCCAAACCCCA  
 GTTATGTGTTCTCATTTTACCCAAGACTTTTGGCCAGAGCAGCATATAAAAGATCCTTTCCAAAAAGCGA  
 CACTGAGAAGATATAAAACTGTGAACATAAAAAATGTACATTTAAAAAAGACCATAAAAGTGTGGATGA  
 GTGTAAGGTGCACAGAGGAGTTATAATGGATTTAACCAATGTTTGCCAGCTACCCAGAGCAAAATATTT  
 CTATTTGATAAAATGTGTGAAAGCCTTTCATAAATTTCAAATTCAAACAGACATAAGATAAGCCACTG  
 AAAAAAACTTTTCAAATGCAAAGAATGTGGCAAATCATTTTGCATGCTCCACATCTAGCTCAACATAA  
 AATAATTCATACCAGAGTGAATTTCTGCAAATGTGAAAAATGTGAAAAGCTTTTAACTGCCCTTCAATC  
 ATCACTAAACATAAGAGAATTAATACTGGAGAGAAACCTACACATGTGAAGAATGTGGCAAAGCTTTA  
 ATGGTCTCACGCCTTACTACACATAAAAAAATTAATACTAGATACAACTCTACAAATGTGAAGAATG  
 TGGCAAAGCTTTTAAAGTCTCAATCCTTACTACCCATAAGATAATTCGCACTGGAGAGAAATTTCTAC  
 AAATGTAAAGAATGTGCCAAAGCTTTTAAACCAATCCTCAAACCTTACTGAACATAAGAAAATTCATCCTG  
 GAGAGAAACCTTACAAATGTGAAGAATGTGGCAAAGCCTTTAACTGGCCCTCAACTTACTAAACATAA  
 GAGAATTCATACTGGAGAGAAACCTACACATGTGAAGAATGTGGCAAAGCCTTTAAACAGTTCTCAAAC  
 CTTACTACACATAAGAGAATCCATACTGCAGAGAAATTCATAAATGTACAGAATGTGGTGAAGCTTTTA  
 GCCGGTCTCAAACCTTACTAAACATAAGAAAATTCATACTGAAAAGAAAACCTACAAATGTGAAGAATG  
 TGGCAAAGCTTTTAAAGTGGTCTTCAAAGCTTACTGAACATAAGTTAACTCATACTGGAGAGAAACCTAC  
 AAATGTGAAGAATGTGGCAAAGCCTTTAACTGGCCCTCAACCTTACTAAACATAACAGAATTCATACTG  
 GAGAGAAACCTACAAATGTGAAGTATGTGGCAAAGCCTTTAAACAGTTCTCAAACCTTACTACACATAA  
 GAGAATTCATACTGCAGAAAAACGTACAAATGTGAAGAATGTGGCAAAGCTTTTAAAGCTTCTCAAAC  
 CTTACTAAACATAAGAAAATTCACATTGAAAAGAAAACCTACAAATGTGAAGAATGTGGCAAAGCTTTTA  
 AGTGGTCTCAAAGCTTACTGAACATAAGATAACTCATACTGGAGAGAAACCTACAAATGTGAAGAATG  
 TGGCAAAGCTTTTAAACATTTCTCAATCCTTACCAAACATAAGAGGATTCATACTGGAGAGAAACCTAC  
 AAGTGTGAAGAATGTGGCAAAGCTTTTACCAATCCTCAAACCTTACTACACATAAGAAAATTCATACTG  
 GAGAGAAATTCACAAATGTGAAGAATGTGGCAAAGCTTTTACCAATCTCAAACCTTACTACACATAA  
 AAAAAATTCATACTGGAGGAAAACCTACAAATGTGAAGAATGTGGCAAAGCTTTTAAACAGTTCTCAACT  
 CTTACTAAACATAAGATAATTCACACTGAGGAGAAACCTACAAATGTGAAGAATGTGGCAAAGCTTTTA  
 AGTGGTCTCAAACCTTACTAAACATAAGATAATTCATACTGGAGAGAAACCTACAAATGTGAAGAATG  
 TGGCAAAGCTTTTAACTGTCTCAACCTTTCTACACATAAGATTATTCATACTGGAGAGAAACCTAC  
 AAATGTGAAAAATGTGGCAAAGCTTTTAAACGATCCTCAAACCTTATTGAACATAAGAAAATTCATACTG  
 GAGAGCAACCTACAAATGTGAAGAATGTGGCAAAGCATTAACTATTCTCACACCTTAATACACATAA  
 GAGAATTCATACTAAAGAGCAACCTACAAATGTAAAGAATGTGGCAAAGCTTTTCAACCAATATTTCAAAC  
 CTTACTACACATAACAAAATTCATACTGGAGAGAACTACAAAACCTGAAGATGTGACAGTGATTTTGA  
 CAACACCTCAAACCTTTTCAAACATAAAA

**ACGCGTACGCGGCCGCTCGAG** – GFP Tag – GTTTAA

**Protein Sequence:** >RG234905 representing NM\_001256650  
Red=Cloning site Green=Tags(s)

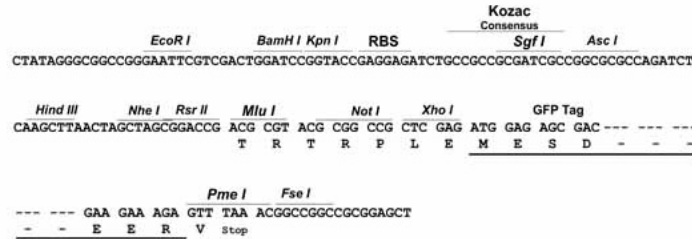
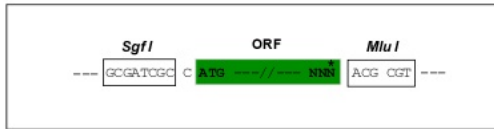
MDVAIEFCLEEWQCLDIAQQNL YRNVMLENYRNLVFLGIAVSKPDLITCLEQEKEPWPMRRHEMVAKPP  
VMCSHFTQDFWPEQHIKDPFQKATLRRYKNCEHKNVHLKGDHKSVDCEKVHRGGYNGFNQCLPATQSKIF  
LFDKCVKAFHKFSNSNRHKISHTEKLFKCKEKGKSFCLPHLAQHKKIHRVNFCKCEKCGKAFNCPSI  
ITKHKRINTGEKPYTCEECGKVFNWSSRLTTHKKNYTRYKLYKCEECGKAFNKSSILTTHKIIIRTGEKPY  
KKECAKAFNQSSNLTEHKKIHPGEKPYKCEECGKAFNWPSTLTKHKRIHTGEKPYTCEECGKAFNQFSN  
LTTHKRIHTAEKFKTECGEAFSRSSNLTKHKKIHTTEKPYKCEECGKAFKWSKLTTEHKLTHTEKPY  
KCEECGKAFNWPSTLTKHNRIHTGEKPYKCEVCGKAFNQFSNLTTHKRIHTAEKPYKCEECGKAFSRSSN  
LTKHKKIHIIEKKPYKCEECGKAFKWSKLTTEHKLTHTEKPYKCEECGKAFNHFSILTTHKRIHTGEKPY  
KCEECGKAFNQSSNLTTHKKIHTGEKPYKCEECGKAFKWSKLTTEHKLTHTEKPYKCEECGKAFNQFSN  
LTKHKKIHIHTTEKPYKCEECGKAFKWSKLTTEHKLTHTEKPYKCEECGKAFKLSSTLSTHKIHTGEKPY  
KCEKCGKAFNRSSNLIEHKKIHTGEQPYKCEECGKAFNYSSHLNTHKRIHTKEQPYKCEECGKAFNQYSN  
LTTHNKIHTGEKLYKPEDVTVILTTPQTFSTNIK

TRTRPLE - GFP Tag - V

**Restriction Sites:** Sgfl-MluI

Cloning Scheme:

Cloning sites used for ORF Shutting:



ACCN: NM\_001256650

ORF Size: 2409 bp

OTI Disclaimer: The molecular sequence of this clone aligns with the gene accession number as a point of reference only. However, individual transcript sequences of the same gene can differ through naturally occurring variations (e.g. polymorphisms), each with its own valid existence. This clone is substantially in agreement with the reference, but a complete review of all prevailing variants is recommended prior to use. [More info](#)

OTI Annotation: This clone was engineered to express the complete ORF with an expression tag. Expression varies depending on the nature of the gene.

Components: The ORF clone is ion-exchange column purified and shipped in a 2D barcoded Matrix tube containing 10ug of transfection-ready, dried plasmid DNA (reconstitute with 100 ul of water).

**Reconstitution Method:**

1. Centrifuge at 5,000xg for 5min.
2. Carefully open the tube and add 100ul of sterile water to dissolve the DNA.
3. Close the tube and incubate for 10 minutes at room temperature.
4. Briefly vortex the tube and then do a quick spin (less than 5000xg) to concentrate the liquid at the bottom.
5. Store the suspended plasmid at -20°C. The DNA is stable for at least one year from date of shipping when stored at -20°C.

**RefSeq:** [NM\\_001256650.2](#)

**RefSeq Size:** 5508 bp

**RefSeq ORF:** 2412 bp

**Locus ID:** 7594

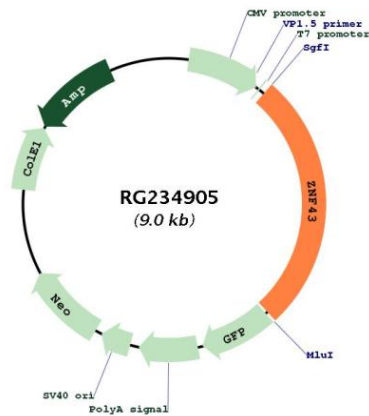
**UniProt ID:** [P17038](#)

**Cytogenetics:** 19p12

**Protein Families:** Transcription Factors

**Gene Summary:** This gene belongs to the C2H2-type zinc finger gene family. The zinc finger proteins are involved in gene regulation and development, and are quite conserved throughout evolution. Like this gene product, a third of the zinc finger proteins containing C2H2 fingers also contain the KRAB domain, which has been found to be involved in protein-protein interactions. [provided by RefSeq, Jul 2008]

**Product images:**



Circular map for RG234905