

Product datasheet for **RG234900**

PI4KB (NM_001198774) Human Tagged ORF Clone

Product data:

Product Type:	Expression Plasmids
Product Name:	PI4KB (NM_001198774) Human Tagged ORF Clone
Tag:	TurboGFP
Symbol:	PI4KB
Synonyms:	NPIK; PI4K-BETA; PI4K92; PI4KBETA; PI4KIII; PI4KIIIBETA; PIK4CB
Mammalian Cell Selection:	Neomycin
Vector:	pCMV6-AC-GFP (PS100010)
E. coli Selection:	Ampicillin (100 ug/mL)



[View online »](#)

ORF Nucleotide Sequence:

>RG234900 representing NM_001198774
 Red=Cloning site Blue=ORF Green=Tags(s)

TTTTGTAATACGACTCACTATAGGGCGGCCGGGAATTCGTCGACTGGATCCGGTACCGAGGAGATCTGCC
 GCC**CGGATCGCC**

ATGGGAGATACAGTAGTGGAGCCTGCCCCCTTGAAGCCAACCTTCTGAGCCCACTTCTGGCCACCAGGGA
 ATAATGGGGGGTCCCTGCTAAGTGTATCACGGAGGGGGTCGGGGAACATCAGTGATTGACCCCTGAGGT
 GGCCAGAAAGCCTGCCAGGAGGTGTTGGAGAAAGTCAAGCTTTTGCATGGAGGCGTGCCAGTCTCTAGC
 AGAGGCACCCCACTGGAGTTGGTCAATGGGGATGGTGTGGACAGTGAATCCGTTGCCTAGATGATCCAC
 CTGCCAGATCAGGGAGGAGGAAGATGAGATGGGGCCGCTGTGGCCTCAGGCACAGCCAAAGGAGCAAG
 AAGACGGCGGCAGAACAACTCAGCTAACAGTCTTGGTGTCTGAGGCTGTTTGAATCAAACTGTTTGA
 ATCTCCATGGCCATTTACATCTGTATACTCCAAGGAGCCTGGAGTACAAGCCTACATTGGCAACCGGC
 TCTTCTGCTTTCGCAACGAGGACGTGGACTTCTATCTGCCCCAGTTGCTTAACATGTACATCCACATGGA
 TGAGGACGTGGGTGATGCCATTAAGCCCTACATAGTCCACCGTTGCCGCCAGAGCATTAACTTTCCCTC
 CAGTGTGCCCTGTTGCTTGGGGCCTATTCTCAGACATGCACATTTCCACTCAACGACACTCCCCTGGGA
 CCAAGCTACGGAAGCTGATCCTCTCAGATGAGCTAAAGCCAGCTCACAGGAAGAGGGAGCTGCCCTCCTT
 GAGCCCGGCCCTGACACAGGGCTGTCTCCCTCCAAAAGGACTCACACAGCCTCTAAGTCAGATGCCACT
 GCCAGCATAAGTCTCAGCAGCAACCTGAAACGAACAGCCAGCAACCCCTAAAGTGGAGAATGAGGATGAGC
 CTGTTTCGACTGGCTCCTGAGAGAGAATTCATCAAGTCCCTGATGGCGATCGGCAAGCGGCTGGCCACGCT
 CCCACCAAGAGCAGAAAACACAGAGGCTGATCTCAGAGCTCTCCCTGCTCAACCATAAGCTCCCTGCC
 CGAGTGGCTGCCACTGTGGCTTTGACCACACGTTGGTCCGTGTACCCACACACAGGCTTTGTGTC
 TCAACTCAAGGACAAGGCTCCCTACCTGATTTATGTGGAAGTCTTGAATGTGAAAACCTTTGACACCAC
 CAGTGTCCCTGCCCGGATCCCCGAGAACCAGAAATTCGGAGTACGAGGTCGGTAGAAAACTTGCCCGAATGT
 GGTATTACCCATGAGCAGCGAGCTGGCAGCTTACGACTGTGCCAACTATGACAACGATGATGAGGCT
 GGTCCGGTGGATGACATAGGCGAGCTGCAAGTGGAGCTCCCCGAAGTGCATACCAACAGCTGTGACAACAT
 CTCCCAGTTCTCTGTGGACAGCATCACAGCCAGGAGAGCAAGGAGCCTGTGTTTATTGCAGCAGGGGAC
 ATCCGCCCGGCCTTTCCGAACAGCTGGCTCATACCCCGACAGCCTTCAAACGAGACCCAGAAGATCCTT
 CTGCAGTTGCTCTCAAAGAGCCCTGGCAGGAGAAAGTACGGCGGATCAGAGAGGGCTCCCCTACGGCCA
 TCTCCCAATTGGCGGCTCCTGTGAGTCAATTTGGGAACAGGAGCGAGTGCCCTTTGGATCAAGCCATACA
 AGATTTCTGTGATTTCCGCTGATAGTGGCATGATTGAACCAAGTGGTCAATGCTGTGTCCATCCATCAGGT
 GAAGAAACAGTCACAGCTCTCCTTGCTCGATTACTTCTACAGGAGCACGGCAGTTACACCACTGAGGCA
 TTCTCAGTGCACAGCGCAATTTGTGCAAAGTTGTGCTGGTACTGCTTGGTCTGCTACCTGCTGCAAG
 TCAAGGACAGACACAATGGGAATATCCTTTTGGACGCAGAAAGCCACATCATCCACATCGACTTTGGCTT
 CATCCTCTCCAGCTCACCCGAAATCTGGGCTTTGAGACGTCAGCCTTTAAGCTGACCACAGAGTTTGTG
 GATGTGATGGGCGGCTGGATGGCGACATGTTCAACTACTATAAGATGCTGATGCTGCAAGGCTGATTG
 CCGCTCGGAAACACATGGACAAGGTGGTGCAGATCGTGGAGATCATGCAGCAAGGTTCTCAGCTTCTTGT
 CTTCCATGGCTCCAGCACCATTGAAACCTCAAAGAGAGGTTCCACATGAGCATGACTGAGGAGCAGCTG
 CAGCTGCTGGTGGAGCAGATGGTGGATGGCAGTATGCGGTCTATCACCAACAACTCTATGACGGCTTCC
 AGTACCTACCAACGGCATCATG

ACGCGTACGCGGCCGCTCGAG – GFP Tag – GTTTAA

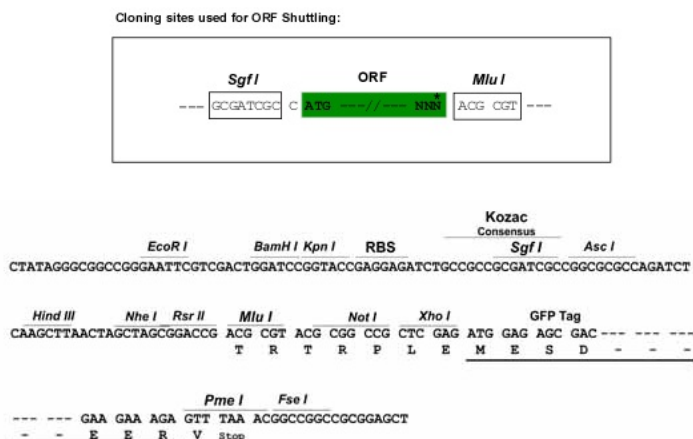
Protein Sequence: >RG234900 representing NM_001198774
 Red=Cloning site Green=Tags(s)

```

MGDTVVEPAPLKPTSEPTSGPPGNNGSLLSVITEGVGELSVIDPEVAQKACQEVLEKVKLLHGGVAVSS
RGTPLELVNGDGDSEIRCLDDPPAQIREEEDEMGAAVASGTAKGARRRRQNNSAKQSWLLRLFESKLF
ISMAISYLYNSKEPGVQAYIGNRLF CFRNEDVDFYLPQLLNMYIHMDDEDVGDAIKPYIVHRCRQSINFS
QCALLLGAYSSDMHISTQRHSRGTCLRKLILSDELKPAHRKRELPSLSPAPDTGLSPSKRTHQRKSDAT
ASISLSSNLKRTASNPKVENEDEPVRLAPEREFIKSLMAIGKRLATLPTKEQKTQRLLISELSLLNHKLP
RVWLPTAGFDHHVVRVPHQAVVLNSKDKAPYLIYVEVLECFDFTTSPARIPENRIRSTRSVENLPEC
GITHEQRAGSFSTVPNYDNDDEAWSVDDIGELQVELPEVHTNSCDNISQFSVDSITSQESKEPVFIAAGD
IRRRLEQLAHTPTAFKRDPEDPSAVALKEPWQEKVRRIREGSPYGHLPNWRLLSVIVKCGDDLQELLA
FQVLKQLQSIWEQERVPLWIKPYKILVISADSGMIEPVVNAVSIHQVKKQSQLSLLDYFLQEHGYSYTT
FLSAQRNFVQSCAGYCLVCYLLQVDRHNGNILLDAEGHIIHIDFGFILLSPPRNLGFETSAFKLTTEFV
DVMGGLDGMFNYYKMLMLQGLIAARKHMDKVVQIVEIMQQGSQLPCFHGSSTIRNLKERFHMSMTEEQL
QLLVEQMVDGSMRSITTKLYDGFQYLTNGIM
  
```

TRTRPLE - GFP Tag - V

Restriction Sites: Sgfl-MluI

Cloning Scheme:


ACCN: NM_001198774

ORF Size: 2403 bp

OTI Disclaimer: The molecular sequence of this clone aligns with the gene accession number as a point of reference only. However, individual transcript sequences of the same gene can differ through naturally occurring variations (e.g. polymorphisms), each with its own valid existence. This clone is substantially in agreement with the reference, but a complete review of all prevailing variants is recommended prior to use. [More info](#)

OTI Annotation: This clone was engineered to express the complete ORF with an expression tag. Expression varies depending on the nature of the gene.

Components: The ORF clone is ion-exchange column purified and shipped in a 2D barcoded Matrix tube containing 10ug of transfection-ready, dried plasmid DNA (reconstitute with 100 ul of water).

Reconstitution Method:

1. Centrifuge at 5,000xg for 5min.
2. Carefully open the tube and add 100ul of sterile water to dissolve the DNA.
3. Close the tube and incubate for 10 minutes at room temperature.
4. Briefly vortex the tube and then do a quick spin (less than 5000xg) to concentrate the liquid at the bottom.
5. Store the suspended plasmid at -20°C. The DNA is stable for at least one year from date of shipping when stored at -20°C.

RefSeq: [NM_001198774.2](#)

RefSeq Size: 3934 bp

RefSeq ORF: 2406 bp

Locus ID: 5298

UniProt ID: [Q9UBF8](#)

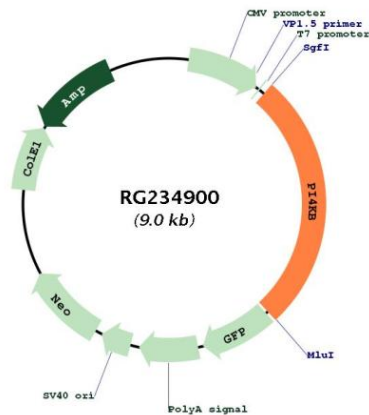
Cytogenetics: 1q21.3

Protein Families: Druggable Genome

Protein Pathways: Inositol phosphate metabolism, Metabolic pathways, Phosphatidylinositol signaling system

Gene Summary: Phosphorylates phosphatidylinositol (PI) in the first committed step in the production of the second messenger inositol-1,4,5,-trisphosphate (PIP). May regulate Golgi disintegration/reorganization during mitosis, possibly via its phosphorylation. Involved in Golgi-to-plasma membrane trafficking (By similarity).[UniProtKB/Swiss-Prot Function]

Product images:



Circular map for RG234900