

Product datasheet for **RG234873**

EPB41L1 (NM_001258331) Human Tagged ORF Clone

Product data:

Product Type:	Expression Plasmids
Product Name:	EPB41L1 (NM_001258331) Human Tagged ORF Clone
Tag:	TurboGFP
Symbol:	EPB41L1
Synonyms:	4.1N; MRD11
Mammalian Cell Selection:	Neomycin
Vector:	pCMV6-AC-GFP (PS100010)
E. coli Selection:	Ampicillin (100 ug/mL)



[View online »](#)

ORF Nucleotide Sequence:

>RG234873 representing NM_001258331
 Red=Cloning site Blue=ORF Green=Tags(s)

TTTTGTAATACGACTCACTATAGGGCGGCCGGGAATTCGTGACTGGATCCGGTACCGAGGAGATCTGCC
 GCC**GCGATCGCC**

ATGGAGGAGAAGGACTACAGTGAGGCCGATGGCCTTTCGAGAGGACCACGCCAGCAAGGCCAGAAAT
 CGCCCCAGAAGATTGCCAAGAAATACAAGAGTGCCATCTGCCGGTCACTCTGCTTGATGCCTCGGAGTA
 TGAGTGTGAGGTGGAGAAACATGGCCGGGGCCAGGTGCTGTTGACCTGGTCTGTGAACACCTCAACCTC
 CTAGAGAAGGACTACTTCGGCCTGACCTTCTGTGATGCTGACAGCCAGAAGAACTGGCTGGACCCCTCCA
 AGGAGATCAAGAAGCAGATCCGGAGTAGCCCTGGAATTTTGCCTTACAGTCAAGTTCTACCCGCTGA
 TCCTGCCAGCTGACAGAAGACATCACAAGATACTACCTGTGCCTGCAGCTGCGGGCAGACATCATCAG
 GGCCGGCTGCCATGCTCCTTTGTACGCATGCCCTACTGGGCTCCTACGCTGTGCAGGCTGAGCTGGGTG
 ACTATGATGCTGAGGAGCATGTGGGCAACTATGTCAGCGAGCTCCGCTTTCGCCCCAACCAGACCCGGGA
 GCTGGAGGAGAGGATCATGGAGCTGCATAAGACATATAGGGGGATGACCCCGGGAGAAGCAGAAATCCAC
 TTCTTAGAGAATGCCAAGAAGCTTTCATGTACGGAGTAGACCTGCACCATGCCAAGGACTCTGAGGGCA
 TCGACATCATGTTAGGCGTTTGTGCCAATGGCCTGCTCATCTACCGGGACCGGCTGAGAATCAACCCTT
 TGCTGGCCCAAGATCCTCAAGATCTCCTACAAGAGGAGTAACCTTCTATCAAGATCCGGCCTGGGGAG
 TATGAGCAATTTGAGAGCACAATTGGCTTTAAGCTCCCAAACCACCGGTGAGCAAGAGACTGTGGAAGG
 TCTGCATCGAGCATCATACATTTCCGGCTGGTGTCCCTGAGCCCCACCCAAGGGCTTCTGGTGAT
 GGGCTCCAAGTTCCGGTACAGTGGGAGGACCCAGGCACAGACTCGCCAGGCCAGCGCCCTCATTGACCGG
 CCTGCACCCTTCTTTGAGCGTCTTCCAGCAAACGGTACACCATGTCCCGCAGCCTTGATGGAGCAGAGT
 TCTCCCGCCAGCCTCGGTGAGGAGAACCATGATGCAGGGCCTGACGGTGACAAGCGGGATGAGGATGG
 CGAGTCTGGGGGGCAACGGTACAGAGGCTGAGGAGGGAGAGGTGAGGACTCCAACCAAGATCAAGGAGCTA
 AAGTTCTTAGACAAGCCAGAAGATGTCTTGTGAAGCACCAGGCCAGCATCAATGAGCTCAAAGGACCC
 TGAAGGAGCCCAACAGCAAACCTCATCCACCGGGATCGAGACTGGGAACGGGAGCGCAGGCTGCCCTCCTC
 CCCCCTCCCCCTCCCCAAGGGCACCCTGAGAAAGCCAATGAGAGAGCAGGGCTGAGGGAGGGCTCC
 GAGGAGAAAGTCAAACCACCAGTCCCCGGGCCCCAGAGAGTGACACAGGCGATGAGGACCAGGACCAGG
 AGAGGGACACGGTGTCTGAAGGACAACCACCTGGCCATTGAGCGCAAGTGTCCAGCATCACGGTCAG
 CTCTACGTCTAGCCTGGAGGCTGAGGTGGACTTACGGTCAATGGTGACTACCATGGCAGCGCCTTCGAA
 GACTTCTCCCGCAGCCTGCCTGAGCTCGACCGGACAAAAGCGACTCGGACACTGAGGGCCTGCTGTTCT
 CCCGGGATCTCAACAAGGGGGCCCCAGCCAGGATGATGAGTCTGGGGGATTGAGGACAGCCCGGATCG
 AGGGGCTGCTCCACCCGGATATGCCCAAGTTTGGCCCGTGAAAACAGAAACCATGACTGTGAGCAGT
 CTGGCCATTAGAAAGAAGATTGAGCCGGAGGCCGTAAGTGCAGACCAGAGTCTCCGCTATGGATAACACCC
 AGGAGAACAGTCTCAAGTCCGGGAAGGGGGCAGCTGCCATGATCCAGGCCACAGACGGTGGCCACGGGA
 AATCCGTTCTCTTTCTCCGATCATCGGGAAGATGTCTCACCAGCACCTACGGCGCCACTGCGGAAACC
 CTCTCAACCTCCACCACCACCATGTACCAAAACTGTGAAAGGAGGGTTTTCTGAGACAAGGATCGAGA
 AGCGAATCATCATTACTGGGATGAAGATGTCGATCAAGACCAGGCCCTGGCTTTGGCCATCAAGGAGGC
 CAAACTGCAGCATCCTGATATGCTGGTAACCAAGCTGTGATACAGAGAAACAGACCCATCCCCAGAG
 GAGAGGGACAAGAAGCCACAGGAATCC

ACGCGTACGCGGCCGCTCGAG – GFP Tag – GTTTAA

Protein Sequence: >RG234873 representing NM_001258331
 Red=Cloning site Green=Tags(s)

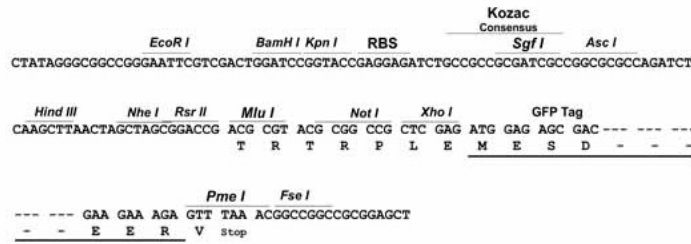
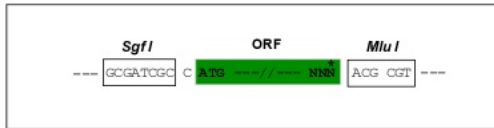
MEEKDYSEADGLSERTTPSKAQKSPQKIAKKYKSAICRVTLLDASEYECEVEKHGRGQVLFDLVCEHLNL
 LEKDYFGLTFCDADSQKNWLDPSKEIKKQIRSSPWNFAFTVKFYPPDPAQLTEDITRYYLCLQLRADIIIT
 GRLPCSFVTHALLGSYAVQAEAGDYDAEEHVGNVYSELRFAPNQTRELEERIMELHKTYRGMTPEAEIIEH
 FLENAKKLSMYGVDLHHAKDSEGIDIMLGVCANGLLIYRDRLRINRF AWPKILKISYKRSNFYIKIRPGE
 YEQFESTIGFKLPNHRSAKRLWKVCI EHHTF FRLVSP EPPPKGFLVMGSKFRYSGRTQAQTRQASALIDR
 PAPFFERSSSKRYTMSRSLDGA EFSRPASVSENHDAGPDGDKRDE DGE SGGQRSEAE EGEVRTPTKIKEL
 KFLDKPEDVLLKHQASINELKRTLKEPNSKLIHRDRDWERERRLPSSPASPSPKGTPEKANERAGLREGS
 EEKVKPPRPAPESDTGDEDQDQERD TVFLKDNHLAIERKCSSITVSSTSSLEAEVDFTVIGDYHGSAFE
 DFSRSLPELDRDKSDSDTEGLLFSRDLNKGAPSQDDESGGIEDSPDRGACSTPDMQPQFEPVKTETMTVSS
 LAIRKKIEPEAVLQTRVSAMDNTQENSLKSGKGAAMIPGPQTVATEIRSLSPIIGKDVLTSTYGATAET
 LSTSTTHVTKTVKGGFSETRIEKRIIITGDEDVDQDQALALAIKEAKLQHPDMLVTKAVVYRETDPSPE
 ERDKKPQES

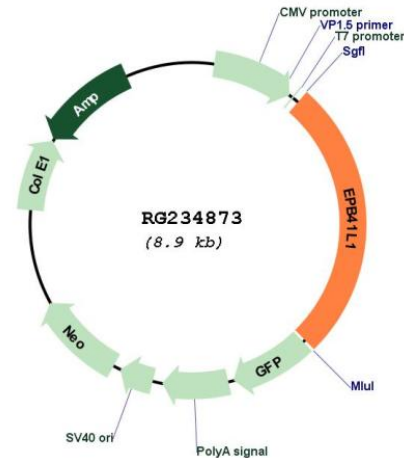
TRTRPLE - GFP Tag - V

Restriction Sites: SgfI-MluI

Cloning Scheme:

Cloning sites used for ORF Shuttling:



Plasmid Map:


ACCN: NM_001258331

ORF Size: 2337 bp

OTI Disclaimer: The molecular sequence of this clone aligns with the gene accession number as a point of reference only. However, individual transcript sequences of the same gene can differ through naturally occurring variations (e.g. polymorphisms), each with its own valid existence. This clone is substantially in agreement with the reference, but a complete review of all prevailing variants is recommended prior to use. [More info](#)

OTI Annotation: This clone was engineered to express the complete ORF with an expression tag. Expression varies depending on the nature of the gene.

Components: The ORF clone is ion-exchange column purified and shipped in a 2D barcoded Matrix tube containing 10ug of transfection-ready, dried plasmid DNA (reconstitute with 100 ul of water).

Reconstitution Method:

1. Centrifuge at 5,000xg for 5min.
2. Carefully open the tube and add 100ul of sterile water to dissolve the DNA.
3. Close the tube and incubate for 10 minutes at room temperature.
4. Briefly vortex the tube and then do a quick spin (less than 5000xg) to concentrate the liquid at the bottom.
5. Store the suspended plasmid at -20°C. The DNA is stable for at least one year from date of shipping when stored at -20°C.

RefSeq: [NM_001258331.2](#)

RefSeq Size: 5972 bp

RefSeq ORF: 2340 bp

Locus ID: 2036

UniProt ID: [Q9H4G0](#)

Cytogenetics: 20q11.23

Protein Families: Druggable Genome

Protein Pathways: Tight junction

Gene Summary: Erythrocyte membrane protein band 4.1 (EPB41) is a multifunctional protein that mediates interactions between the erythrocyte cytoskeleton and the overlying plasma membrane. The encoded protein binds and stabilizes D2 and D3 dopamine receptors at the neuronal plasma membrane. Multiple transcript variants encoding different isoforms have been found for this gene. [provided by RefSeq, Jan 2015]