

Product datasheet for **RG234847**

CDHH (CDH13) (NM_001220488) Human Tagged ORF Clone

Product data:

Product Type:	Expression Plasmids
Product Name:	CDHH (CDH13) (NM_001220488) Human Tagged ORF Clone
Tag:	TurboGFP
Symbol:	CDHH
Synonyms:	CDHH; P105
Mammalian Cell Selection:	Neomycin
Vector:	pCMV6-AC-GFP (PS100010)
E. coli Selection:	Ampicillin (100 ug/mL)



[View online »](#)

ORF Nucleotide Sequence:

>RG234847 representing NM_001220488
 Red=Cloning site Blue=ORF Green=Tags(s)

TTTTGTAATACGACTCACTATAGGGCGGCCGGAATTCGTGACTGGATCCGGTACCGAGGAGATCTGCC
 GCC**CGGATCGCC**

ATGAAAACGCGCGGGCGCTTCTAGTCGGACAAAATGCAGCCGAGAAGTCCGCTCGTTCTGTGCGTTCT
 CCTGTCCCAGGGCCAAACAACCCACCTGCACTGCATGGTTCCCCAGCAAGAACATCCCAGTGAGAATGG
 CCCACAGATGCCTGGCGTGACCCACCTGCAGTTCACCATGCAGGTGCTGCTGCTAACATCTGCAGAA
 GATTTGGACTGCACTCCTGGATTCAGCAGAAAAGTGTCCATATCAATCAGCCAGCTGAATTCATTGAGG
 ACCAGTCAATTCTAACTTGACCTTCAGTGACTGTAAGGGAAACGACAAGCTACGCTATGAGGTCTCGAG
 CCCATACTTCAAGGTGAACAGCGATGGCGGCTTAGTTGCTCTGAGAAACATAACTGCAGTGGGCAAACT
 CTGTTCTGCCATGCACGGACCCCATGCGGAAGATATGGCAGAAGTCTGATTGTCGGGGGAAAGACA
 TCCAGGGCTCCTGCAGGATATATTTAAATTTGCAAGAAGTCTCCTGTCCCAAGACAAAAGAGGTCCAT
 TGTGGTATCTCCATTTAATTCAGAGAATCAGAGACAGCCTTCCCAAGAGATGTTGGCAAGGTAGTC
 GATAGTGACAGGCCAGAAAGTCCAAGTCCGGCTCACTGGAAAGGGAGTGGATCAAGAGCTAAAGGAA
 TTTTCAGAATCAATGAGAACACAGGGAGCGTCTCCGTGACACGGACCTTGGACAGAGAAGTAATCGCTGT
 TTATCAACTATTTGTGGAGACCACTGATGTCAATGGCAAAACTCTCGAGGGGCGGGTGCCTCTGGAAGTC
 ATTGTGATTGATCAGAATGACAACCGACCGATCTTTCGGGAAGGCCCTACATCGGCCACGTCATGGAAG
 GGTCAACCCACAGGCACCACAGTATGCGGATGACAGCCTTTGATGCAGATGACCCAGCCACCGATAATGC
 CCTCCTGCGGTATAATATCCGTCAGCAGACGCCTGACAAGCCATCTCCCAACATGTTCTACATCGATCCT
 GAGAAAAGGAGACATTGCACTGTTGTGTCACCTGCGTCTGGACCGAGAGACTTGGAAAATCCCAAGT
 ATGAATGATCATCGAGGCTCAAGATATGGTGGACTGGATGTTGGATTAAACAGGCACGGCCACAGCCAC
 GATCATGATCGATGACAAAAATGATCACTACCAAAAATTCACCAAGAAAGAGTTTCAAGCCACAGTCGAG
 GAAGGAGCTGTGGGAGTTATTGTCAATTTGACAGTTGAAGATAAGGATGACCCACACAGTGCATGGA
 GGGCTGCCTACACCATCATCAACGGAAACCCCGGGCAGAGCTTTGAAATCCACACCAACCCTCAAACCAA
 CGAAGGGATGCTTTCTGTTGTCAAACATTGGACTATGAAATTTCTGCCTTCCACACCCTGCTGATCAAA
 GTGGAAAATGAAGACCCACTCGTACCCGACGCTCTCTACGGCCCCAGCTCCACAGCCACCGTCCACATCA
 CTGTCCTGGATGTCAACGAGGGCCAGTCTTCTACCCAGACCCCATGATGGTGACCAGGCAGGAGGACCT
 CTCTGTGGGCAGCGTCTGCTGACAGTGAATGCCACGGACCCCGACTCCCTGCAGCATCAAACCATCAGG
 TATTCTGTTTACAAGGACCCAGCAGGTTGGCTGAATTTAACCCCATCAATGGGACTGTTGACACCACAG
 CTGTGCTGGACCGTGAGTCCCCATTTGTGACAACAGCGTGTACACTGCTCTTCTTGGCAATTGACAG
 TGGCAACCCTCCCGCTACGGGCACTGGGACTTTGCTGATAACCCTGGAGGACGTGAATGACAATGCCCCG
 TTCATTTACCCACAGTAGTGAAGTCTGTGATGATGCCAAAAACCTCAGTGTAGTCATTTTGGGAGCAT
 CAGATAAGGATCTTACCCGAATACAGATCCTTTCAAATTTGAAATCCACAAACAAGCTGTTCTGATAA
 AGTCTGGAAGATCTCAAAGATCAACAATACACACGCCCTGGTAAGCCTTCTTCAAATCTGAACAAAGCA
 AACTACAACCTGCCCATCATGGTGACAGATTGAGGAAACCCCATGACGAATATCACAGATCTCAGGG
 TACAAGTGTCTCCTGCAGGAATTCAAAGTGGACTGCAACGCGGCAGGGGCCCTGCGCTCAGCCTGCC
 CTCAGTCTGCTCCTCAGCCTTTCAGCTTAGCTTGTCTG

ACGCGTACGCGGCCGCTCGAG - GFP Tag - GTTTAA

Protein Sequence: >RG234847 representing NM_001220488
Red=Cloning site Green=Tags(s)

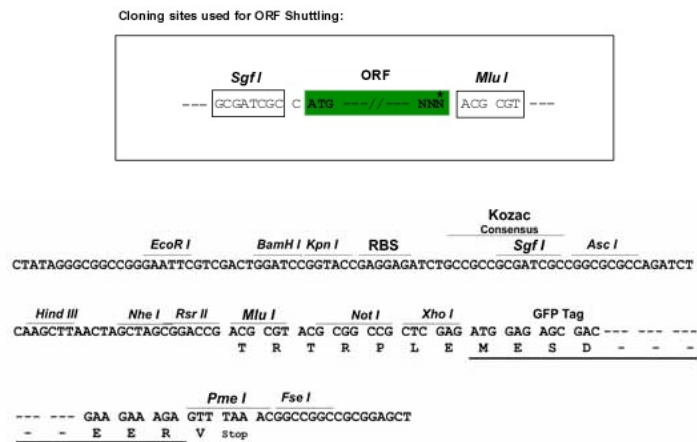
```

MKTTPPGASSRTKCSRELRSFCAFSCPRAKOPTCTAWFPQQEHPSENGPQMPGRDPPAAASTMQVLLLSAE
DLDCTPGFQQKVFHINQPAEFIEDQSILNLTFSCKGNDKLRVEVSSPYFKVNSDGLVALRNITAVGKT
LFVHARTPHAEDMAELVIVGGKDIQGLQDIFKFARTSPVPRQKRISIVVSPILIPENRQRFPRDVGKVV
DSDRPERSKFRLTGKGVDPQEPKGI FRINENTGSVSVTRTL DREVI AVYQLFVETTDVNGK TLEGPVLEV
IVIDQNDNRPIFREGPYIGHVMEGSPGTGTTVMRMTAFDADDPATDNALLRYNIRQQTPDKPSPNMFYIDP
EKGDIVTVVSPALLDRETLENPKYELIEAQDMAGLDVGLTGTATATIMIDDKNDHSPKF TKKEFQATVE
EGAVGVI VNLTVEDKDDPTTGAWRAAYTIINGNPGQSFEIHTNPQTNEGMLSVVKPLDYEISAFHTLLIK
VENEDPLVPDVSYGPSSTATVHITVLDVNEGPFYDPMMVTRQEDLSVGSVLLTVNATDPDSLQHQ TIR
YSVYKDPAGWLNINPINGTVDTTAVLDRESPFDNSVYTALFLAIDSGNPPATGTG TLLITLEDVNDNAP
FIYPTVAEVCDDAKNLSVVILGASDKDLHPNTDPFKFEIHKQAVPKVWKISKINNTHALV SLLQLNLNKA
NYNLPIMVTDSGKPPMTNITDLRVQVCSRN SKVDCNAAGALRFSLPV LLLSLFSLACL
    
```

TRTRPLE - GFP Tag - V

Restriction Sites: SgfI-MluI

Cloning Scheme:



ACCN: NM_001220488

ORF Size: 2280 bp

OTI Disclaimer: The molecular sequence of this clone aligns with the gene accession number as a point of reference only. However, individual transcript sequences of the same gene can differ through naturally occurring variations (e.g. polymorphisms), each with its own valid existence. This clone is substantially in agreement with the reference, but a complete review of all prevailing variants is recommended prior to use. [More info](#)

OTI Annotation: This clone was engineered to express the complete ORF with an expression tag. Expression varies depending on the nature of the gene.

Components: The ORF clone is ion-exchange column purified and shipped in a 2D barcoded Matrix tube containing 10ug of transfection-ready, dried plasmid DNA (reconstitute with 100 ul of water).

Reconstitution Method:

1. Centrifuge at 5,000xg for 5min.
2. Carefully open the tube and add 100ul of sterile water to dissolve the DNA.
3. Close the tube and incubate for 10 minutes at room temperature.
4. Briefly vortex the tube and then do a quick spin (less than 5000xg) to concentrate the liquid at the bottom.
5. Store the suspended plasmid at -20°C. The DNA is stable for at least one year from date of shipping when stored at -20°C.

RefSeq: [NM_001220488.2](#)

RefSeq Size: 4134 bp

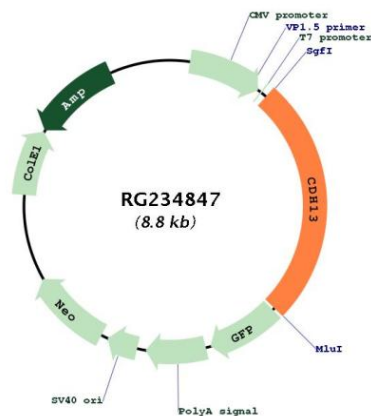
RefSeq ORF: 2283 bp

Locus ID: 1012

Cytogenetics: 16q23.3

Gene Summary: This gene encodes a member of the cadherin superfamily. The encoded protein is localized to the surface of the cell membrane and is anchored by a GPI moiety, rather than by a transmembrane domain. The protein lacks the cytoplasmic domain characteristic of other cadherins, and so is not thought to be a cell-cell adhesion glycoprotein. This protein acts as a negative regulator of axon growth during neural differentiation. It also protects vascular endothelial cells from apoptosis due to oxidative stress, and is associated with resistance to atherosclerosis. The gene is hypermethylated in many types of cancer. Alternative splicing results in multiple transcript variants encoding different isoforms. [provided by RefSeq, May 2011]

Product images:



Circular map for RG234847