

Product datasheet for **RG234846**

MAP3K13 (NM_001242317) Human Tagged ORF Clone

Product data:

Product Type:	Expression Plasmids
Product Name:	MAP3K13 (NM_001242317) Human Tagged ORF Clone
Tag:	TurboGFP
Symbol:	MAP3K13
Synonyms:	LZK; MEKK13; MLK
Mammalian Cell Selection:	Neomycin
Vector:	pCMV6-AC-GFP (PS100010)
E. coli Selection:	Ampicillin (100 ug/mL)



[View online »](#)

**ORF Nucleotide
Sequence:**

>RG234846 representing NM_001242317
 Red=Cloning site Blue=ORF Green=Tags(s)

TTTTGTAATACGACTCACTATAGGGCGGCCGGAATTCGTCGACTGGATCCGGTACCGAGGAGATCTGCC
 GCC**CGCATCGCC**

ATGTATTGTGGCATTCAAATCCTAGCACTCTGGGAGAGGGGTGTTTGTACTCAGGCCCATGTTATTGTA
 TTATCATGGAATACTGTGCCATGGACAACTCTACGAGGTCTTACGAGCTGGCAGGAAGATCACACCTCG
 ATTGCTAGTAGACTGGTCCACAGGAATTGCAAGTGAATGAATTTTGCACCTCCATAAAAATTATTCAT
 CGTGATCTCAAATCACCTAATGTTTTAGTGACCCACACAGATGCGGTAAAAATTTAGATTTTGGTACAT
 CTAAGGAACTCAGTGACAAAAGTACCAAGATGTCAATTTGCTGGCAGGTGCGATGGATGGCGCCAGAGGT
 GATACGGAATGAACCTGTCTCTGAAAAAGTTGATATATGGTCTTTTGGAGTGGTCTTTGGGAGCTGCTG
 ACAGGAGAGATCCCTTACAAAGATGTAGATTCTCAGCCATTATCTGGGGTGTGGAAAGCAACAGCTCC
 ACCTTCCAGTTCCCTTCCACTTGCCCTGATGGATCAAAAATCCTTATGAAACAGACGTGGCAGAGTAAACC
 TCGAAACCGACCTTCTTTTCGGCAGACACTCATGCATTTAGACATTGCCTCTGCAGATGTACTTGCACCC
 CCAACAAGAACTTACTTCAAGTCTCAGGCTGAATGGAGAGAAGAAGTGAAAAAACATTTTGAAGAATCA
 AAAGTGAAGGAACCTGTATACACCGTTAGATGAAGAAGTTCGAAGGCGCAGAGAAGAGCTCAGGCA
 TGCGCTGGATATTCGTGAACACTATGAGCGGAAGCTTGAAGCGTGAGCAAGCAGTGGAAAAGAAGT
 GCCATCATGTGCAGCTAGAAAATGCGGGGAGAAGGAGCTCATTAAAGCGTGAGCAAGCAGTGGAAAAGAAGT
 ATCCTGGGACCTACAAACGACACCCTGTTTCGTCTATCATCCATCCCAATGCCATGGAGAAAATCATGAA
 AAGGAAAGGAGTGCCACAAAATCTGGGATGCAGACCAACCGCCAGACTTGTGAGATCAGAAGGGATC
 CCCACCACAGAAGTGGCTCCCACTGCATCCCTTTGTCCGGAAGTCCAAAATGTCCACTTCTAGCAGCA
 AGAGCCGATATCGAAGCAAACCCAGCCACCGCCGAGGGAATAGCAGAGGCAGCCATAGTGACTTTGCCGC
 AATCTTGAAAAACCAGCCAGCCAGGAAAATTCACCCATCCCACTTACCTGCACCAAGCTCAATCCCAA
 TACCCTTCTCTCATACCATAATTCTCTGCAGCAGCAATACCAGCAGCCCCCTCCTGCCATGTCCCAGA
 GTCACCATCCCAGACTCAATATGCACGGACAGGACATAGCAACCTGCGCCAAACACTGAGGTATTTTCGG
 CCCAGCAGCAGCCCTGCGGAGCCCACTCAGCAACCATGCTCAGAGACAGCTGCCCGGCTCGAGCCCTGAC
 CTCATCTCCACAGCCATGGCTGCAGACTGCTGGAGAAGTTCTGAGCCTGACAAGGGCCAAGCTGGTCCCT
 GGGGCTGTTGCCAGGCTGACGCTTATGACCCCTGCCTTTCAGTGCAGGCCAGAACAGTATGGGTCCTTAGA
 CATACCCTCTGCTGAGCCAGTGGGAGGAGCCCTGACCTTCCAAGTACCAGCACATAATCCTCTCTTG
 GAAAACGCCCAGAGTTCTGAGAAAACGGAAGAAAATGAATTCAGCGGCTGTAGGTCTGAGTCATCCCTCG
 GCACCTCTCATCTCGGCACCCCTCCAGCGCTACCTCGAAAAACAAGGCCTCTGCAGAAGAGTGGAGATGA
 CTCTCAGAAAGAGGAAGAAGGGGAAGTAGATAGTGAAGTTGAATTTCCACGAAGACAGAGGCCCATCGC
 TGTATCAGCAGCTGCCAGTCATATTCAACCTTTAGCTCTGAGAATTTCTCTGTGTCTGATGGAGAAGAGG
 GAAATACCAGTGACCACTCAAACAGTCTGATGAGTTAGCTGATAAACTTGAAGACCGCTTGGCAGAGAA
 GCTAGACGACCTGCTGTCCAGACGCCAGAGATTTCCATTGACATATCCTCACACTCGGATGGGCTCTCT
 GACAAGGAGTGTGCCGTGCGCCGTGGAAGACTCAGATGTCTCTGGGCAAGCTGTGTGTGGAGGAACGTG
 GCTATGAGAACCCATGCAGTTTGAAGAATCGGACTGTGACTCTTCAGATGGGGAGTGTCTGATGCCAC
 AGTTAGGACCAATAAACACTACAGCTCTGCTACCTGG

ACGCGTACGCGGCCGCTCGAG - GFP Tag - GTTTAA

Protein Sequence: >RG234846 representing NM_001242317
Red=Cloning site Green=Tags(s)

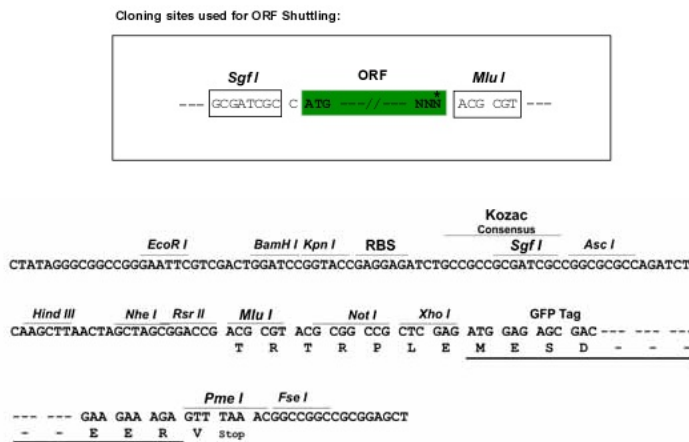
```

MYCGIQILALWERGVTQAPCYCIIMEYCAHGQLYEVL RAGRKITPRLLVDWSTGIASGMNYLHLHKIIH
RDLKSPNVLVTHTDAVKISDFGTSKELSDKSTKMSFAGTVAWMAPEVIRNEPVSEKVDIWSFGVVLWELL
TGEIPYKDV DSSAIIWGVGSNSLHLPVPSTCPDGFKILMKQTWQSKPRNRP SFRQTLMHLDIASADVLAT
PQETYFKSQA EWREEVKKHFEKIKSEGTCIHRLEDEELIRRRREELRHALDIREHYERKLERANNLYMELS
AIMLQLEMREKELIKREQAVEKKYPGT YKRHPVRPIIHPNAMEKLMKRKGVP HKSGMQTKRPDLLRSEGI
PTTEVAPTASPLSGSPKMSTSSSKSRYRSKPRHRRGNSRGS HSDFAAILKNQPAQENSPHPTYLHQASQ
YPSLHHHNSLQQYQPPPPAMSQSHHPRLNMHGQDIATCANNLRYFGPAAALRSPLSNHAQRQLPGSSPD
LISTAMAADCWRSSEPKGQAGPWGCCQADAYDPCLQCRPEQYGS LDIPSAEPVGRSPDLKSPAHPNLL
ENAQSSEKTEENEFSGCRSESLGTSHLGTPPALPRKTRPLQKSGDSS EEEEEGEVDSEVEFRRRQRPHR
CISSCQSYSTF SSENFSVSDGEEGNTSDHSNPDELADKLEDR LAEKLDLLSQTPEIPIDISSHSDGLS
DKECAVRRVKTQMSLGKLCVEERGYENPMQFEESDCDSSDGECS DATVRTNKHYSATW
    
```

TRTRPLE - GFP Tag - V

Restriction Sites: SgfI-MluI

Cloning Scheme:



ACCN: NM_001242317

ORF Size: 2277 bp

OTI Disclaimer: The molecular sequence of this clone aligns with the gene accession number as a point of reference only. However, individual transcript sequences of the same gene can differ through naturally occurring variations (e.g. polymorphisms), each with its own valid existence. This clone is substantially in agreement with the reference, but a complete review of all prevailing variants is recommended prior to use. [More info](#)

OTI Annotation: This clone was engineered to express the complete ORF with an expression tag. Expression varies depending on the nature of the gene.

Components: The ORF clone is ion-exchange column purified and shipped in a 2D barcoded Matrix tube containing 10ug of transfection-ready, dried plasmid DNA (reconstitute with 100 ul of water).

Reconstitution Method:

1. Centrifuge at 5,000xg for 5min.
2. Carefully open the tube and add 100ul of sterile water to dissolve the DNA.
3. Close the tube and incubate for 10 minutes at room temperature.
4. Briefly vortex the tube and then do a quick spin (less than 5000xg) to concentrate the liquid at the bottom.
5. Store the suspended plasmid at -20°C. The DNA is stable for at least one year from date of shipping when stored at -20°C.

RefSeq: [NM_001242317.2](#)

RefSeq Size: 9094 bp

RefSeq ORF: 2280 bp

Locus ID: 9175

UniProt ID: [O43283](#)

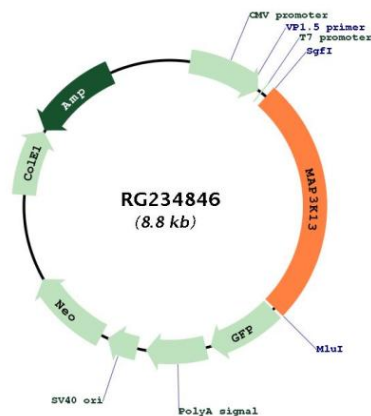
Cytogenetics: 3q27.2

Protein Families: Druggable Genome, Protein Kinase, Transcription Factors

Protein Pathways: MAPK signaling pathway

Gene Summary: The protein encoded by this gene is a member of serine/threonine protein kinase family. This kinase contains a dual leucine-zipper motif, and has been shown to form dimers/oligomers through its leucine-zipper motif. This kinase can phosphorylate and activate MAPK8/JNK, MAP2K7/MKK7, which suggests a role in the JNK signaling pathway. [provided by RefSeq, Jul 2008]

Product images:



Circular map for RG234846