

## Product datasheet for **RG234842**

### Bile salt activated lipase (CEL) (NM\_001807) Human Tagged ORF Clone

#### Product data:

Product Type:	Expression Plasmids
Product Name:	Bile salt activated lipase (CEL) (NM_001807) Human Tagged ORF Clone
Tag:	TurboGFP
Symbol:	Bile salt activated lipase
Synonyms:	BAL; BSDL; BSSL; CEase; CELL; FAP; FAPP; LIPA; MODY8
Mammalian Cell Selection:	Neomycin
Vector:	pCMV6-AC-GFP (PS100010)
E. coli Selection:	Ampicillin (100 ug/mL)



[View online »](#)

**ORF Nucleotide Sequence:**

>RG234842 representing NM\_001807  
 Red=Cloning site Blue=ORF Green=Tags(s)

TTTTGTAATACGACTCACTATAGGGCGGCCGGGAATTCGTCGACTGGATCCGGTACCGAGGAGATCTGCC  
 GCC**CGGATCGCC**

ATGCTCACCATGGGGCGCCTGCAACTGGTTGTGTTGGCCCTCACCTGCTGCTGGGCAGTGGCGAGTGCCG  
 CGAAGCTGGGCGCGTGTACACAGAAGGTGGGTTTCGTGGAAGGCGTCAATAAGAAGCTCGGCCTCCTGGG  
 TGA CTCTGTGGACATCTTCAAGGCATCCCTTCGCAGCTCCACCAAGGCCCTGGAAAACTCTCAGCCA  
 CATCTGGCTGGCAAGGGACCCTGAAGGCCAAGAATTCAAGAAGAGATGCCTGCAGGCCACCATCACCC  
 AGGACAGCACCTACGGGATGAAGACTGCCTGTACCTCAACATTTGGGTGCCCCAGGGCAGGAAGCAAGT  
 CTCCGGGACCTGCCGTTATGATCTGGATCTATGGAGGCGCCTTCTCATGGGTCCGGCCATGGGGCC  
 AACTTCTCAACAACCTGTATGACGGCGAGGAGATCGCCACACGCGGAAACGTCATCGTGGTCACTT  
 TCAACTACCGTGTGGCCCCCTTGGGTTCTCAGCACTGGGGACCCAATCTGCCAGTAACTATGGCCT  
 TCGGGATCAGCACATGGCCATTGCTTGGGTGAAGAGGAATATCGCGGCCCTTCGGGGGGACCCCAACAAC  
 ATCAGCTCTTCGGGGAGTCTGCTGGAGGTGCCAGCGTCTCTCTGCAGACCCTCTCCCCACAACAAGG  
 GCCTCATCCGGCGAGCCATCAGCCAGAGCGGCGTGGCCCTGAGTCCCTGGGTATCCAGAAAAACCCACT  
 CTTCTGGGCCAAAAAGGTGGCTGAGAAGGTGGGTTGCCCTGTGGGTGATGCCGCCAGGATGGCCAGTGT  
 CTGAAGGTTACTGATCCCCGAGCCCTGACGCTGGCCTATAAGGTGCCGCTGGCAGGCCTGGAGTACCCCA  
 TGCTGCACTATGTGGGCTTCGTCCTGTATTGATGGAGACTTCATCCCCGCTGACCCGATCAACCTGTA  
 CGCAACGCCCGCCGACATCGACTATATAGCAGGCCAACAAACATGGACGGCCACATCTTCGCCAGCATC  
 GACATGCCCTGCCATCAACAAGGGCAACAAGAAAGTACGGAGGAGGACTTCTACAAGCTGGTCACTGAGT  
 TCACAATCACAAGGGGCTCAGAGGCGCCAAGACGACCTTTGATGTCTACACCGAGTCTGGGGCCAGGA  
 CCCATCCAGGAGAATAAGAAGAAGACTGTGGTGGACTTTGAGACCGATGTCCTCTCTCTGGTGCCACC  
 GAGATTGCCCTAGCCAGCACAGAGCCAATGCCAAGAGTGCCAAGACCTACGCCTACCTGTTTTCCATC  
 CCTCTCGGATGCCGCTACCCCAAATGGGTGGGGCCGACCATGCAGATGACATTCACTACGTTTTTCGG  
 GAAGCCCTTCGCCACCCACAGGGCTACCGGCCCAAGACAGGACAGTCTCTAAGGCCATGATCGCCTAC  
 TGGACCAACTTTGCCAAAACAGGGGACCCCAACATGGGCGACTCGGCTGTGCCACACACTGGGAACCTT  
 AACTACGGAAAACAGCGGCTACCTGGAGATCACAAGAAGATGGGCAGCAGCTCCATGAAGCGGAGCCT  
 GAGAACCAACTTCTGCGCTACTGGACCCTCACCTATCTGGCGCTGCCACAGTGACCGACCAGGAGGCC  
 ACCCTGTGCCCCACAGGGGACTCCGAGGCCACTCCCGTGCCCCACGGGTGACTCCGAGACCGCCC  
 CCGTGCCGCCACGGGTGACTCCGGGGCCCCCGTGGCGCCACGGGTGACTCCGGGGCCCCCCCCGT  
 GCCGCCACGGGTGACTCCGGGGCCCCCCCCGTGCCGCCACGGGTGACTCCGGGGCCCCCCCCGTGCCGCCA  
 CCCACGGGTGACTCCGGGGCCCCCCCCGTGCCGCCACGGGTGACTCCGGGGCCCCCCCCGTGCCGCCA  
 CGGGTACTCCGGGGCCCCCCCCGTGCCGCCACGGGTGACTCCGGCGCCCCCCCCGTGCCGCCACGGG  
 TGACGCCGGGGCCCCCCCCGTGCCGCCACGGGTGACTCCGGCGCCCCCCCCGTGCCGCCACGGGTGAC  
 TCCGGGGCCCCCCCCGTGACCCACGGGTGACTCCGAGACCGCCCCGTGCCGCCACGGGTGACTCCG  
 GGGCCCCCTGTGCCCCACGGGTGACTCTGAGGCTGCCCTGTGCCCCACAGATGACTCCAAGGA  
 AGCTCAGATGCCTGCAGTCATTAGGTTT

**ACGCGT**ACGCGGCCGCTCGAG - GFP Tag - GTTTAA

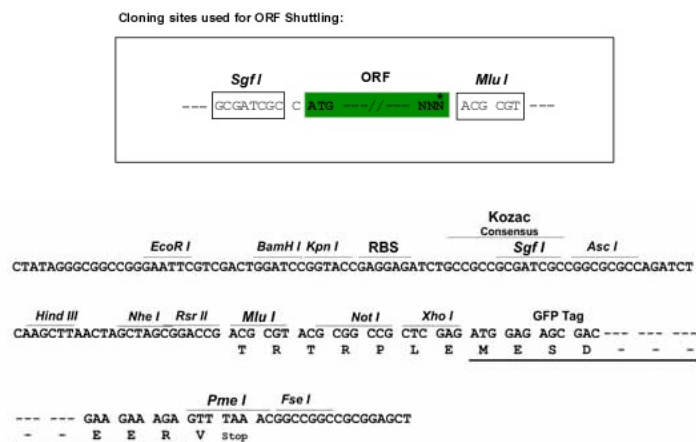
**Protein Sequence:** >RG234842 representing NM\_001807  
 Red=Cloning site Green=Tags(s)

```
MLTMGRLQLVVLGLTCCWAVASAAKLGAVYTEGGFVEGVNKKLGLLGDSVDIFKGIIPFAAPTKALENPQP
HPGWQGTAKAKNFKKRCLQATITQDSTYGDEDCLYLNIWVPQGRKQVSRDLPVMIWIYGGAFMGS GHGA
NFLNNYLVDGEEIATRGNVIVVTFNRYRVGPLGFLSTGDANLPGNYGLRDQHMAIAWVKRNIAAFGGDPNN
ITLFGESAGGASVSLQTLSPYNKGLIRRAISQSGVALSPWVIQKNPLFWAKKVAEKVGCPVGDAAARMAQC
LKVTDPRALTLAYKVPLAGLEYPMLHYVGFVPVIDGDFIPADPINLYANAADIDYIAGTNNMDGHIFASI
DMPAINKGNKKVTEEDFYKL VSEFTITKGLRGAKTTFDVYTESWAQDPSQENKKKTVVDFETDVLFLVPT
EIALAQHRANAKSAKTYAYLFSHPSRMPVYPKWWGADHADDIQYVFGKPFATPTGYRPQDRVTSKAMIAIY
WTFNAKTGDPNMGDSAVPTHWEPYTTENSGYLEITKKMGSSSMKRSLRTNFLRYWTLTYLALPTVTDQEA
TPVPPTGDSEATVPVPTGDSETAPVPPTGDSGAPPVPPTGDSGAPPVPPTGDSGAPPVPPTGDSGAPPVP
PTGDSGAPPVPPTGDSGAPPVPPTGDSGAPPVPPTGDSGAPPVPPTGDAGPPPVPPTGDSGAPPVPPTGD
SGAPPVPTGDSETAPVPPTGDSGAPPVPPTGDSEAAPVPPTDDSKEAQM PAVIRF
```

TRTRPLE - GFP Tag - V

**Restriction Sites:** SgfI-MluI

**Cloning Scheme:**



**ACCN:** NM\_001807

**ORF Size:** 2268 bp

**OTI Disclaimer:** The molecular sequence of this clone aligns with the gene accession number as a point of reference only. However, individual transcript sequences of the same gene can differ through naturally occurring variations (e.g. polymorphisms), each with its own valid existence. This clone is substantially in agreement with the reference, but a complete review of all prevailing variants is recommended prior to use. [More info](#)

**OTI Annotation:** This clone was engineered to express the complete ORF with an expression tag. Expression varies depending on the nature of the gene.

**Components:** The ORF clone is ion-exchange column purified and shipped in a 2D barcoded Matrix tube containing 10ug of transfection-ready, dried plasmid DNA (reconstitute with 100 ul of water).

**Reconstitution Method:**

1. Centrifuge at 5,000xg for 5min.
2. Carefully open the tube and add 100ul of sterile water to dissolve the DNA.
3. Close the tube and incubate for 10 minutes at room temperature.
4. Briefly vortex the tube and then do a quick spin (less than 5000xg) to concentrate the liquid at the bottom.
5. Store the suspended plasmid at -20°C. The DNA is stable for at least one year from date of shipping when stored at -20°C.

**RefSeq:** [NM\\_001807.4](#), [NP\\_001798.2](#)

**RefSeq Size:** 2386 bp

**RefSeq ORF:** 2262 bp

**Locus ID:** 1056

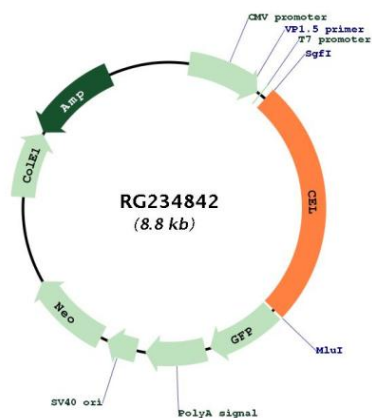
**Cytogenetics:** 9q34.13

**Protein Families:** Druggable Genome

**Protein Pathways:** Glycerolipid metabolism, Metabolic pathways, Steroid biosynthesis

**Gene Summary:** The protein encoded by this gene is a glycoprotein secreted from the pancreas into the digestive tract and from the lactating mammary gland into human milk. The physiological role of this protein is in cholesterol and lipid-soluble vitamin ester hydrolysis and absorption. This encoded protein promotes large chylomicron production in the intestine. Also its presence in plasma suggests its interactions with cholesterol and oxidized lipoproteins to modulate the progression of atherosclerosis. In pancreatic tumoral cells, this encoded protein is thought to be sequestered within the Golgi compartment and is probably not secreted. This gene contains a variable number of tandem repeat (VNTR) polymorphism in the coding region that may influence the function of the encoded protein. [provided by RefSeq, Jul 2008]

### Product images:



Circular map for RG234842