

## Product datasheet for **RG234827**

### Glucocorticoid Receptor (NR3C1) (NM\_001204258) Human Tagged ORF Clone

#### Product data:

Product Type:	Expression Plasmids
Product Name:	Glucocorticoid Receptor (NR3C1) (NM_001204258) Human Tagged ORF Clone
Tag:	TurboGFP
Symbol:	Glucocorticoid Receptor
Synonyms:	GCCR; GCR; GCRST; GR; GRL
Mammalian Cell Selection:	Neomycin
Vector:	pCMV6-AC-GFP (PS100010)
E. coli Selection:	Ampicillin (100 ug/mL)



[View online »](#)

**ORF Nucleotide Sequence:**

>RG234827 representing NM\_001204258  
 Red=Cloning site Blue=ORF Green=Tags(s)

TTTTGTAATACGACTCACTATAGGGCGGCCGGAATTCGTCGACTGGATCCGGTACCGAGGAGATCTGCC  
 GCC**CGCATCGCC**

ATGGACTTCTATAAAACCCTAAGAGGAGGAGCTACTGTGAAGTTTCTGCGTCTTACCCTCACTGGCTG  
 TCGCTTCTCAATCAGACTCCAAGCAGCGAAGACTTTTGGTTGATTTCCAAAAGGCTCAGTAAGCAATGC  
 GCAGCAGCCAGATCTGTCCAAAGCAGTTTCACTCTCAATGGGACTGTATATGGGAGAGACAGAAACAAAA  
 GTGATGGGAAATGACCTGGGATCCACAGCAGGGCCAAATCAGCCTTCTCGGGGAAACAGACTTAA  
 AGCTTTTGAAGAAAGCATTGCAAACCTCAATAGGTGACAGTGTCCAGAGAACCCCAAGAGTTCAGC  
 ATCCACTGCTGTCTGCTGCCCCACAGAGAAGGAGTTTCAAAAACCTCACTCTGATGTATCTTCAGAA  
 CAGCAACATTTGAAGGGCCAGACTGGCACCAACGGTGGCAATGTGAAATTGTATACCACAGACCAAAGCA  
 CCTTTGACATTTGCAGGATTTGGAGTTTCTTCTGGGTCGCCAGGTAAGAGACGAATGAGAGTCTTG  
 GAGATCAGACCTGTTGATAGATGAAAACGTTTGTCTTCTCCTCTGGCGGAGAAGACGATTCAATCCTT  
 TTGGAAGGAAACTCGAATGAGGACTGCAAGCCTCTCATTTTACCGGACACTAAACCCAAAATTAAGGATA  
 ATGGAGATCTGGTTTTGTCAAGCCCAGTAATGTAACACTGCCCAAGTAAAACAGAAAAAGAAGATT  
 CATCGAATCTGCACCCCTGGGGTAATTAAGCAAGAGAAACTGGGCACAGTTTACTGTGACGGCAAGCTTT  
 CCTGGAGCAAAATAAATTGGTAATAAAATGTCTGCCATTTCTGTTTATGGTGTGAGTACCTCTGGAGGAC  
 AGATGTACCCTATGACATGAATACAGCATCCCTTTCTCAACAGCAGGATCAGAAGCCTATTTTTAATGT  
 CATTCCACCAATCCCCTGGTTCCGAAAATTGGAATAGGTGCCAAGGATCTGGAGATGACAACCTTGACT  
 TCTCTGGGACTCTGAACCTCCCTGGTCCAGTCTTCTCAACAGCAACAACAGGACCACCTCCCAACTCTGCCTGGT  
 CAGATGTAAGCTCTCCTCCATCCAGCTCCTCAACAGCAACAACAGGACCACCTCCCAACTCTGCCTGGT  
 GTGCTCTGATGAAGCTTCAGGATGTCATTATGGAGTCTTAACCTGTGGAAGCTGTAAGTTTTCTTCAAA  
 AGAGCAGTGGAAGGACAGCACAATTACCTATGTGCTGGAAGGAATGATTGCATCATCGATAAAATTCGAA  
 GAAAAAAGTCCAGCATGCCGCTATCGAAAATGTCTTCAAGGCTGGAATGAACTGGAAGCTCGAAAAAC  
 AAAGAAAAAATAAAAGGAATTCAGCAGGCCACTACAGGAGTCTCACAAGAAACCTCTGAAAATCCTGGT  
 AACAAAACAATAGTTCTGCAACGTTACCACAACCTCACCCCTACCCTGGTGTCACTGTTGGAGGTTATTG  
 AACCTGAAGTGTATATGCAGGATATGATAGCTCTGTTCCAGACTCAACTGGAGGATCATGACTACGCT  
 CAACATGTTAGGAGGGCGCAAGTGATTGCAGCAGTGAATGGGCAAAGGCAATACCAGTTTCAGGAAC  
 TTACACCTGGATGACCAATGACCCTACTGCAGTACTCCTGGATGTTTCTTATGGCATTGCTCTGGGGT  
 GGAGATCATATAGACAATCAAGTCAAACCTGCTGTGTTTTGCTCCTGATCTGATTATAATGAGCAGAG  
 AATGACTCTACCCTGCATGTACGACCAATGTAACACATGCTGTATGTTTCTCTGAGTTACACAGGCTT  
 CAGGTATCTTATGAAGAGTATCTCTGTATGAAAACCTTACTGCTTCTCTTTCAGTTCTTAAAGCAGGTC  
 TGAAGAGCCAAGAGCTATTTGATGAAATTAAGATGACCTACATCAAAGAGCTAGGAAAAGCCATTGTCAA  
 GAGGGAAGGAAACTCCAGCCAGAAGTGGCAGCGGTTTTATCAACTGACAAAACCTTTGGATTCTATGCAT  
 GAAGTGGTTGAAAATCTCCTTAACTATTGCTTCCAAACATTTTGGATAAGACCATGAGTATTGAATTCC  
 CCGAGATGTTAGCTGAAATCATACCAATCAGATACCAAAATATTCAAATGGAAATATCAAAAACCTTCT  
 GTTTCATCAAAAG

**ACGCGT**ACGCGGCCGCTCGAG - GFP Tag - GTTTAA

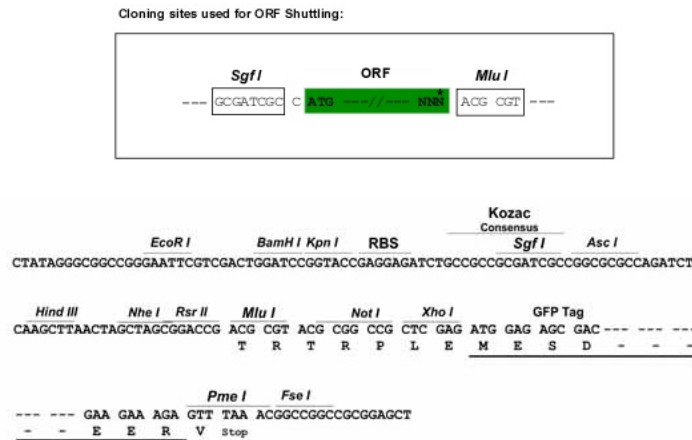
**Protein Sequence:** >RG234827 representing NM\_001204258  
 Red=Cloning site Green=Tags(s)

MDFYKTLRGGATVKVSASSPSLAVASQSDSKQRLLVDFPKGSVSNAQQPDL SKAVSL SMGLYMGETETK  
 VMGNDLGFPQQGQISLSSGETDLKLEESIANLNRSTVSPENPKSSASTAVSAAPTEKEFPKTHSDVSSE  
 QQHLKGGTGTNGGNVCLYTTDQSTFDILQDLEFSSGSPGKETNESPWRSDLLIDENCLL SPLAGEDDSFL  
 LEGNSNEDCKPLILPDTKPKIKDNGDLVSSPSNVTL P QVKTEKEDFIELCTPGVIKQEKLGTVYQCASF  
 PGANIIGNKMSAISVHGVTSGGQMYHYDMNTASLSQQDQKPIFNVIPPIPVGSENWNRCSGSDNLT  
 SLGTLNFPGRTVFSNGYSSPSMRPDVSSPPSSSTATTGPPPCLCLVCSDEASGCHYGVLTCGSCKVFFK  
 RAVEGQHNYLCAGRNDICIIDKIRRNKCPACRYRKLQAGMNL EARKTKKKIKGIQQATTGVSQETSENPG  
 NKTIVPATLPQLTPTLVSLLEVIEPEVL YAGYDSSVPDSTWRIMTTLNMLGGRQVIAAVKAKAIPGFRN  
 LHLDDQMTLLQYSWMFLMAFALGWRSYRQSSANLLCFAPDLIINEQRMTLPCMYDQCKHMLYVSSSELHRL  
 QVSYEEYLCKMTLLLLSSVPKDKLSQELFDEIRMTYIKELGKAI VKREGNSSQNWRFYQLTKLLDSMH  
 EVVENLLNYCFQTFLDKTMSEIFPEMLAEIITNQIPKYSNGNIKKLLFHQK

TRTRPLE - GFP Tag - V

**Restriction Sites:** SgfI-MluI

**Cloning Scheme:**



**ACCN:** NM\_001204258

**ORF Size:** 2253 bp

**OTI Disclaimer:** The molecular sequence of this clone aligns with the gene accession number as a point of reference only. However, individual transcript sequences of the same gene can differ through naturally occurring variations (e.g. polymorphisms), each with its own valid existence. This clone is substantially in agreement with the reference, but a complete review of all prevailing variants is recommended prior to use. [More info](#)

**OTI Annotation:** This clone was engineered to express the complete ORF with an expression tag. Expression varies depending on the nature of the gene.

**Components:** The ORF clone is ion-exchange column purified and shipped in a 2D barcoded Matrix tube containing 10ug of transfection-ready, dried plasmid DNA (reconstitute with 100 ul of water).

**Reconstitution Method:**

1. Centrifuge at 5,000xg for 5min.
2. Carefully open the tube and add 100ul of sterile water to dissolve the DNA.
3. Close the tube and incubate for 10 minutes at room temperature.
4. Briefly vortex the tube and then do a quick spin (less than 5000xg) to concentrate the liquid at the bottom.
5. Store the suspended plasmid at -20°C. The DNA is stable for at least one year from date of shipping when stored at -20°C.

**RefSeq:** [NM\\_001204258.2](#)

**RefSeq Size:** 6801 bp

**RefSeq ORF:** 2256 bp

**Locus ID:** 2908

**UniProt ID:** [P04150](#)

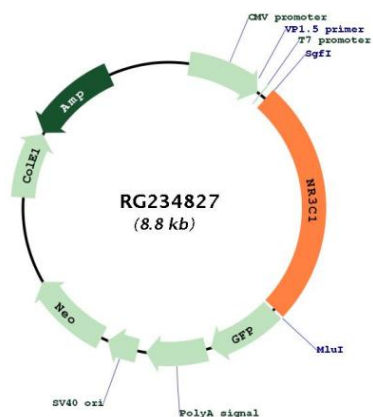
**Cytogenetics:** 5q31.3

**Protein Families:** Druggable Genome, Nuclear Hormone Receptor, Transcription Factors

**Protein Pathways:** Neuroactive ligand-receptor interaction

**Gene Summary:** This gene encodes glucocorticoid receptor, which can function both as a transcription factor that binds to glucocorticoid response elements in the promoters of glucocorticoid responsive genes to activate their transcription, and as a regulator of other transcription factors. This receptor is typically found in the cytoplasm, but upon ligand binding, is transported into the nucleus. It is involved in inflammatory responses, cellular proliferation, and differentiation in target tissues. Mutations in this gene are associated with generalized glucocorticoid resistance. Alternative splicing of this gene results in transcript variants encoding either the same or different isoforms. Additional isoforms resulting from the use of alternate in-frame translation initiation sites have also been described, and shown to be functional, displaying diverse cytoplasm-to-nucleus trafficking patterns and distinct transcriptional activities (PMID:15866175). [provided by RefSeq, Feb 2011]

Product images:



Circular map for RG234827