

Product datasheet for **RG234802**

AP4B1 (NM_001253852) Human Tagged ORF Clone

Product data:

Product Type:	Expression Plasmids
Product Name:	AP4B1 (NM_001253852) Human Tagged ORF Clone
Tag:	TurboGFP
Symbol:	AP4B1
Synonyms:	BETA-4; CPSQ5; SPG47
Mammalian Cell Selection:	Neomycin
Vector:	pCMV6-AC-GFP (PS100010)
E. coli Selection:	Ampicillin (100 ug/mL)



[View online »](#)

ORF Nucleotide
Sequence:

>RG234802 representing NM_001253852
Red=Cloning site Blue=ORF Green=Tags(s)

TTTTGTAATACGACTCACTATAGGGCGGCCGGGAATTCGTCGACTGGATCCGGTACCGAGGAGATCTGCC
GCC**CGCATCGCC**

ATGCCGTACCTTGGCTCCGAGGACGTGGTGAAGGAGCTGAAGAAGGCTCTGTGCAATCCTCACATTCAG
CTGATAGGCTGCGCTACCGGAATGTCATCCAGCGAGTGATTAGGTACATGACTCAAGGCTTGGACATGTC
TGGTGTTTTTATGAAAATGGTGAAGGCCAGTGCCACTGTAGATATTGTCCAGAAGAAGTTGGTTTTATCTG
TACATGTGCACATATGCTCCCCTGAAACCAGATCTGGCTCTCCTGGCCATCAATACGCTGTGCAAAGACT
GCTCAGACCCCAATCCAATGGTGCAGGGCTGGCGTTACGGAGCATGTGTAGCCTCAGGATGCCTGGTGT
GCAGGAGTATATAACAACAGCCTATTCTCAATGGTCTGCGGGATAAGGCTTCATATGTCAGGAGAGTGGCA
GTCCTTGGATGTCCAAGATGCATAATCTTCATGGAGACTCTGAAGTAGATGGTGCCTGGTAAATGAAT
TATACAGTTTGTGCGTGACCAGGATCCAATTGTAGTTGTGAAGTCTTGAGGTCTCTAGAGGAAATTTCT
GAAACAGGAAGGAGGCGTTGTCATCAATAAGCCCATTGCTCACCATCTCTTAAATCGAATGTCAAAGCTG
GACCAATGGGGCCAGGCTGAAGTATTGAACTTTCTGCTACGCTACCAACCCCGCAGTGAGGAAGAATAT
TTGACATTCTCAATCTGTTGGATAGTTTCTCAAGAGCAGTAGCCAGGTGTGGTGTGAGGACTACCAA
ACTTTTTCTGATCTTGGCAAAAATGTTTCCCCACGTACAAACTGATGTCCTTGTGCGGGTCAAGGGACCT
TTGCTAGCTGCCTGTTCTCAGAGAGCCGTGAGCTCTGTTTTGTTGCTCTTTGTCATGTACGCCAGATCT
TGCATAGTTTACCAGGCTCACTTTAGCAGCCACTACAAAAGTTTTTTTGTCTCTACTCGGAGCCCACTA
CATCAAACACAGAAAGTGGAGGTGCTGTGTGAAGTGGTGAACGATGAGAATGTGCAGCAGGTGCTAGAG
GAGCTTCGAGGGTACTGCACGGATGTGTCTGCGGACTTTGCACAGGCTGCCATCTTGGCATAGGTGGCA
TTGCCAGGACTTACACAGATCAATGTGTTCAAGTTTTAACAGAGTTGCTGGGTCTTCGACAAGACCAT
TACCACAGTGGTGGTGCAGACTTCCGAGACCTGGTTTTGGTTGTCTCAGTGTACTGAAGCTGTATGT
CAGGCCCTGCCCGGCTGTGAAGAGAACATTCAAGATAGTGAAGGGAAGCAAGCACTTATTTGGCTACTTG
GTGTCCATGGGGAAGAATTCTAATGCTCCTTATGTGTTAGAGGACTTTGTTGAGAATGTGAAGTCGGA
AACATTTCCAGCTGTTAAGATGGAGCTGCTCACTGCTTTGCTGCGCCTTTTCTCTCCCGACCTGCTGAG
TGCCAGGACATGCTAGGACGTTTGTGTTACTGCATAGAGGAAGAAAAGATATGGCTGTACGGGACC
GAGGTCTCTTCTATTATCGCCTCCTCTTAGTTGGCATTGATGAAGTTAAGCGGATTTCTGTGTAGCCCTAA
ATCTGACCCTACTCTTGGACTTTTGGAGGATCCGGCAGAAAGACCTGTGAATAGCTGGGCCTCAGACTTC
AACACACTGGTGCCAGTGTATGGCAAAGCCCACTGGGCAACTATCTCTAATGCCAGGGGGCAGAGCGTT
GTGACCCAGAGCTTCTAAAACCTCATCTTTGCCGCATCAGGACCCTTGATTCTGAAGAGAACAAGGA
GAGGGTACAAGAACTCCCTGATTCTGGAGCCCTCATGCTAGTCCCAATCGCCAGCTTACTGCTGATTAT
TTTGAGAAAACCTGGCTTAGCCTTAAAGTTGCTCATCAGCAAGTGTGCTTGGCGGGGAGAATTCATC
CTGACACCCTCCAGATGGCTCTTCAAGTAGTGAACATCCAGACCATCGCAATGAGTAGGGCTGGGTCTCG
GCCATGGAAAGCATACCTCAGTGCTCAGGATGATACTGGCTGTCTGTTCTTAACAGAAGTCTATTGGAG
CCTGGAAGTCAAGAAATGCAGATCTCTGTGAAACAAAATGAAGCAAGAACGGAGACGCTGAATAGTTTTA
TTTCTGTATTAGAAACTGTGATTGGAACAATTGAAGAAAATAAAATCA

ACGCGTACGCGGCCGCTCGAG - GFP Tag - GTTTAA

Protein Sequence: >RG234802 representing NM_001253852
Red=Cloning site Green=Tags(s)

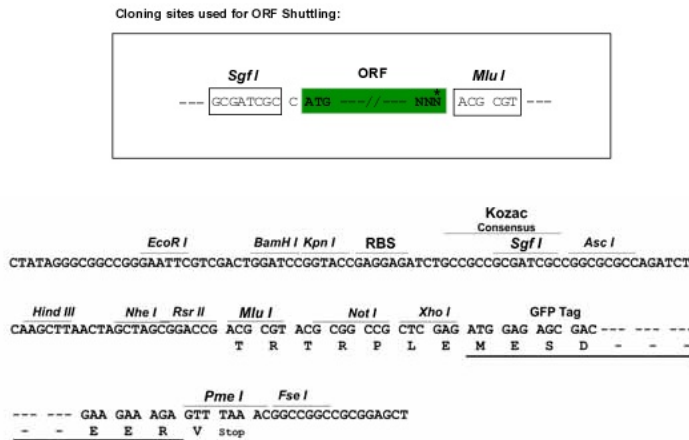
```

MPYLGSSEVVKELKKALCNPHIQADRLRYRNVIRVIRYMTQGLDMSGVFMEMVKASATVDIVQKKLVYL
YMCTYAPLKPDLLAINTLCKDCSDPNPMVRGLALRSMCSLRMPGVQEYIQQPILNGLRDKASYVRRVA
VLGCAKMHNLHGDSEVDGALVNELYSLLRDQDPIVVVNLRSLEEILKQEGGVVINKPIAHLLNRMSKL
DQWQQAQEVLNFLRLRYQPRSEEEELFDILNLLDSFLKSSSPGVVMGATKFLILAKMFPHVQTDVLRVKGK
LLAACSSERELCFVALCHVRQILHSLPGHFSSHKKFFCSYSEPHYIKLQKVEVLCENVQVLE
ELRGYCTDVSADFAQAAIFAIGGIARTYDQCQVQILTELLGLRQEHITTVVVQTFRDLVWLCPQCTEAVC
QALPGCEENIQDSEKQALIWLLGVHGERIPNAPYVLEDFVENVKSETFPAVKMELLTALLRFLSRPAE
CQDMLGRLLYYCIEEEKDMAVRDRGLFYRLLLVGIDEVKRILCSPKSDPTLGLLEDPAERPNSWASDF
NTLVPVYGKAHWATISKCGAERCPELPKTSSF AASGPLIPEENKERVQELPDSGALMLVNRQLTADY
FEKTLWSLKVAAHQVLPWRGEFHPDTLQMALQVNIQTIAMSRAGSRPWKAYLSAQDDTGLFLTELLLE
PGNSEMQISVKQNEARTETLNSFISVLETVIGTIEEIKS
    
```

TRTRPLE - GFP Tag - V

Restriction Sites: SgfI-MluI

Cloning Scheme:



ACCN: NM_001253852

ORF Size: 2217 bp

OTI Disclaimer: The molecular sequence of this clone aligns with the gene accession number as a point of reference only. However, individual transcript sequences of the same gene can differ through naturally occurring variations (e.g. polymorphisms), each with its own valid existence. This clone is substantially in agreement with the reference, but a complete review of all prevailing variants is recommended prior to use. [More info](#)

OTI Annotation: This clone was engineered to express the complete ORF with an expression tag. Expression varies depending on the nature of the gene.

Components: The ORF clone is ion-exchange column purified and shipped in a 2D barcoded Matrix tube containing 10ug of transfection-ready, dried plasmid DNA (reconstitute with 100 ul of water).

Reconstitution Method:

1. Centrifuge at 5,000xg for 5min.
2. Carefully open the tube and add 100ul of sterile water to dissolve the DNA.
3. Close the tube and incubate for 10 minutes at room temperature.
4. Briefly vortex the tube and then do a quick spin (less than 5000xg) to concentrate the liquid at the bottom.
5. Store the suspended plasmid at -20°C. The DNA is stable for at least one year from date of shipping when stored at -20°C.

RefSeq: [NM_001253852.3](#)

RefSeq Size: 2723 bp

RefSeq ORF: 2220 bp

Locus ID: 10717

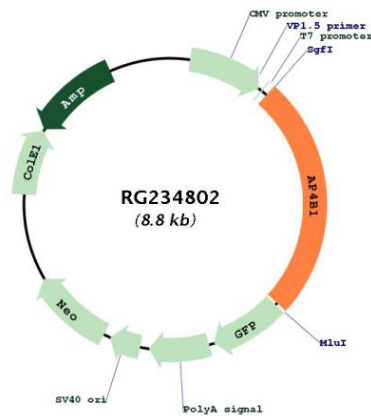
UniProt ID: [Q9Y6B7](#)

Cytogenetics: 1p13.2

Protein Pathways: Lysosome

Gene Summary: This gene encodes a subunit of a heterotetrameric adapter-like complex 4 that is involved in targeting proteins from the trans-Golgi network to the endosomal-lysosomal system. Mutations in this gene are associated with cerebral palsy spastic quadriplegic type 5 (CPSQ5) disorder. Alternatively spliced transcript variants encoding different isoforms have been found for this gene. [provided by RefSeq, Dec 2011]

Product images:



Circular map for RG234802