

Product datasheet for **RG234792**

FGFR2 (NM_023029) Human Tagged ORF Clone

Product data:

Product Type:	Expression Plasmids
Product Name:	FGFR2 (NM_023029) Human Tagged ORF Clone
Tag:	TurboGFP
Symbol:	FGFR2
Synonyms:	BBDS; BEK; BFR-1; CD332; CEK3; CFD1; ECT1; JWS; K-SAM; KGFR; TK14; TK25
Mammalian Cell Selection:	Neomycin
Vector:	pCMV6-AC-GFP (PS100010)
E. coli Selection:	Ampicillin (100 ug/mL)



[View online »](#)

ORF Nucleotide Sequence:

>RG234792 representing NM_023029
 Red=Cloning site Blue=ORF Green=Tags(s)

CTATAGGGCGGCCGGGAATTCGTCGACTGGATCCGGTACCGAGGAGATCTGCCGCCGCGATCGCCGGCGC
 GCC

ATGGTCAGCTGGGGTCGTTTCATCTGCCTGGTCGTGGTACCATGGCAACCTTGTCCCTGGCCCGCCCT
 CCTTCAGTTTAGTTGAGGATACACATTAGAGCCAGAAGATGCCATCTCATCCGGAGATGATGAGGATGA
 CACCGATGGTGGGAAGATTTTGTGAGTGAAGACAGTAACAACAAGAGAGCACCATACTGGACCAACACA
 GAAAAGATGAAAAGCGGCTCCATGCTGTGCCTGCGGCCAACACTGTCAAGTTTCGCTGCCAGCCGGGG
 GGAACCAATGCCAACCATGCGGTGGTGAAAAACGGGAAGGAGTTTAAGCAGGAGCATCGCATTGGAGG
 CTACAAGTACGAAACCAGCACTGGAGCCTCATTATGAAAGTGTGGTCCCATCTGACAAGGAAATTAT
 ACCTGTGTAGTGGAGAATGAATACGGTCCATCAATCACACGTACCACCTGGATGTTGTGGAGCGATCGC
 CTCACCGGCCATCCTCAAGCCGGACTGCCGGCAAATGCCTCCACAGTGGTCGGAGGAGACGTAGAGTT
 TGTCTGCAAGGTTTACAGTGTGCCAGCCCCACATCCAGTGGATCAAGCACGTGAAAAAGAACGGCAGT
 AAATACGGGCCGACGGGCTGCCCTACCTCAAGGTTCTCAAGGCCGCGGTGTTAACACCACGGACAAGG
 AGATTGAGGTTCTCTATATTCGGAATGTAACTTTTGAGGACGCTGGGGAATATACGTGCTTGGCGGGTAA
 TTCTATTGGGATATCCTTCACTCTGCATGTTGACAGTTCTGCCAGCGCCTGGAAGAGAAAAGGAGATT
 ACAGCTTCCCAGACTACCTGGAGATAGCCATTTACTGCATAGGGGTCTTCTTAATCGCCTGTATGGTGG
 TAACAGTCATCCTGTGCCGAATGAAGAACACGACCAAGAAGCCAGACTTCAGCAGCCAGCCGGCTGTGCA
 CAAGCTGACCAACGATCCCCCTGCGGAGACAGGTAACAGTTTCGGCTGAGTCCAGCTCCTCCATGAAC
 TCCAACACCCCGCTGGTGAAGATAACAACACGCCTCTCTTCAACGGCAGACACCCCATGCTGGCAGGGG
 TCTCCGAGTATGAACTTCCAGAGGACCCAAAATGGGAGTTTCAAGAGATAAGCTGACACTGGGCAAGG
 CCTGGGAGAAGGTTGCTTTGGGCAAGTGGTCATGGCGGAAGCAGTGGGAATTGACAAAGACAAGCCCAAG
 GAGGCGGTCACCGTGGCCGTGAAGATGTTGAAAGATGATGCCACAGAGAAAGACCTTTCTGATCTGGTGT
 CAGAGATGGAGATGATGAAGATGATTGGGAAACACAAGAATATCATAAATCTTCTTGGAGCCTGCACACA
 GGATGGGCTCTCTATGTCATAGTTGAGTATGCCTCTAAAGGCAACCTCCGAGAATACCTCCGAGCCCGG
 AGGCCACCGGGATGGAGTACTCCTATGACATTAACCGTGTCTCTGAGGAGCAGATGACCTTCAAGGACT
 TGGTGTATGCACCTACCAGCTGGCCAGAGGCATGGAGTACTGGCTTCCAAAAATGTATTCATCGAGA
 TTTAGCAGCCAGAAATGTTTTGGTAACAGAAAACAATGTGATGAAAATAGCAGACTTTGGACTCGCCAGA
 GATATCAACAATATAGACTATTACAAAAAGACCACCAATGGGCGGCTTCCAGTCAAGTGGATGGCTCCAG
 AAGCCCTGTTTGTAGAGTATACACTCATCAGAGTGTCTGGTCTTCCGGGTGTTAATGTGGGAGAT
 CTTCACTTTAGGGGGCTCGCCCTACCCAGGGATTCCCCTGGAGGAACTTTTTAAGCTGCTGAAGGAAGGA
 CACAGAATGGATAAGCCAGCCAACTGCACCAACGAACTGTACATGATGATGAGGGACTGTTGGCATGCAG
 TGCCCTCCAGAGACCAACGTTCAAGCAGTTGGTGAAGACTTGGATCGAATTCTCACTCTCACAAACAA
 TGAGGAATACTTGGACCTCAGCAACCTCTCGAACAGTATCACCTAGTTACCCTGACACAAGAAGTTCT
 TGTTCTTCAGGAGATGATTCTGTTTTTCTCCAGACCCCATGCCTTACGAACCATGCCTTCTCAGTATC
 CACACATAAACGGCAGTGTAAAAACA

ACGCGTACGCGGCCGCTCGAG - GFP Tag - GTTTAA

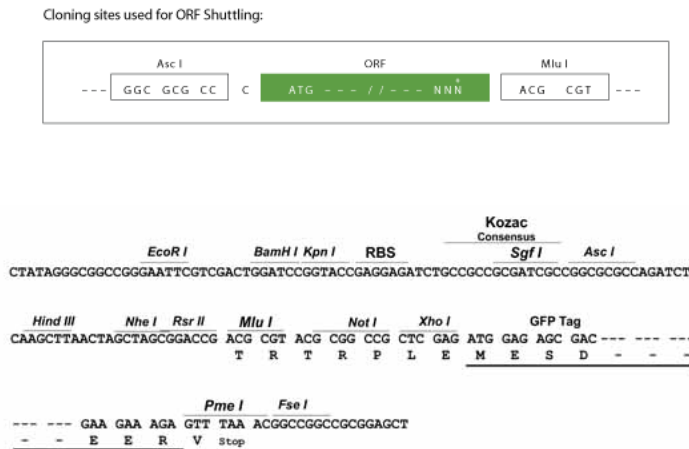
Protein Sequence: >RG234792 representing NM_023029
 Red=Cloning site Green=Tags(s)

```
MVSWGRFICLVVVTMATLSLARPSFSLVEDTTLEPEDAISSGDEDDTDGAEDFVSENSNNKRAPYWTNT
EKMEKRLHAVPAANTVKFRCPAGGNPMPMTMRWLKNGKEFKQEHRIGGYKVRNQHWSLIMESVVP SDKGNY
TCVVENEYGSINHTYHLDVVERSHPRPILQAGLPANASTVVGDDVEFVCKVYSDAQPHIQWIKHVEKNKS
KYGPDGLPYLKVLAAGVNTTDKEIEVLYIRNVTFEDAGEYTCLAGNSIGISFHSAWLTVLPAPGREKEI
TASPDYLEIAIYICIGVFLIACMVVTVILCRMKNTTKKPDFSSQPAVHKLTKRIPLRRQVTVAESSSSMN
SNTPLVRITTRLSTADTPMLAGVSEYELPEDPKWEFPRDKLTLGKPLGEGCFGQVVM AEAVGIDKDKPK
EAVTVAVKMLKDDATEKDLSDLVSEMEMMKMIGKHKNIIINLLGACTQDGPLYVIVEYASKGNLREYLRAR
RPPGMEYSYDINRVPEEQMTFKDLVSCFYQLARGMEYLASQKCIHRDLAARNVLTENNVMKIADFLAR
DINNIDYKKTNGRLPVKWM APEALFDRVYTHQSDVWSFGVLMWEIFTLGGSPYPGIPVEELFKLLKEG
HRMDKPANCTNELYMMMRDCWHAVPSQRPTFKQLVEDLDRILTLTTNEEYLDLSQPLEQYSPSPDTRSS
CSSGDDSVFSPDPMPYEPCLPQYPHINGSVKT
```

TRTRPLE - GFP Tag - V

Restriction Sites: AscI-MluI

Cloning Scheme:



ACCN: NM_023029

ORF Size: 2196 bp

OTI Disclaimer: The molecular sequence of this clone aligns with the gene accession number as a point of reference only. However, individual transcript sequences of the same gene can differ through naturally occurring variations (e.g. polymorphisms), each with its own valid existence. This clone is substantially in agreement with the reference, but a complete review of all prevailing variants is recommended prior to use. [More info](#)

OTI Annotation: This clone was engineered to express the complete ORF with an expression tag. Expression varies depending on the nature of the gene.

Components: The ORF clone is ion-exchange column purified and shipped in a 2D barcoded Matrix tube containing 10ug of transfection-ready, dried plasmid DNA (reconstitute with 100 ul of water).

Reconstitution Method:

1. Centrifuge at 5,000xg for 5min.
2. Carefully open the tube and add 100ul of sterile water to dissolve the DNA.
3. Close the tube and incubate for 10 minutes at room temperature.
4. Briefly vortex the tube and then do a quick spin (less than 5000xg) to concentrate the liquid at the bottom.
5. Store the suspended plasmid at -20°C. The DNA is stable for at least one year from date of shipping when stored at -20°C.

RefSeq: [NM_023029.2](#), [NP_075418.1](#)

RefSeq Size: 3890 bp

RefSeq ORF: 2199 bp

Locus ID: 2263

UniProt ID: [P21802](#)

Cytogenetics: 10q26.13

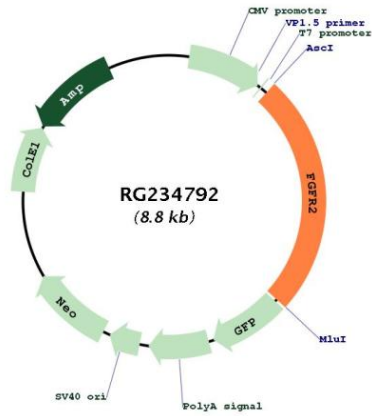
Domains: pkinase, TyrKc, S_TKc, ig, IGc2, IG

Protein Families: Druggable Genome, Protein Kinase, Secreted Protein, Transmembrane

Protein Pathways: Endocytosis, MAPK signaling pathway, Pathways in cancer, Prostate cancer, Regulation of actin cytoskeleton

Gene Summary: The protein encoded by this gene is a member of the fibroblast growth factor receptor family, where amino acid sequence is highly conserved between members and throughout evolution. FGFR family members differ from one another in their ligand affinities and tissue distribution. A full-length representative protein consists of an extracellular region, composed of three immunoglobulin-like domains, a single hydrophobic membrane-spanning segment and a cytoplasmic tyrosine kinase domain. The extracellular portion of the protein interacts with fibroblast growth factors, setting in motion a cascade of downstream signals, ultimately influencing mitogenesis and differentiation. This particular family member is a high-affinity receptor for acidic, basic and/or keratinocyte growth factor, depending on the isoform. Mutations in this gene are associated with Crouzon syndrome, Pfeiffer syndrome, Craniosynostosis, Apert syndrome, Jackson-Weiss syndrome, Beare-Stevenson cutis gyrata syndrome, Saethre-Chotzen syndrome, and syndromic craniosynostosis. Multiple alternatively spliced transcript variants encoding different isoforms have been noted for this gene. [provided by RefSeq, Jan 2009]

Product images:



Circular map for RG234792